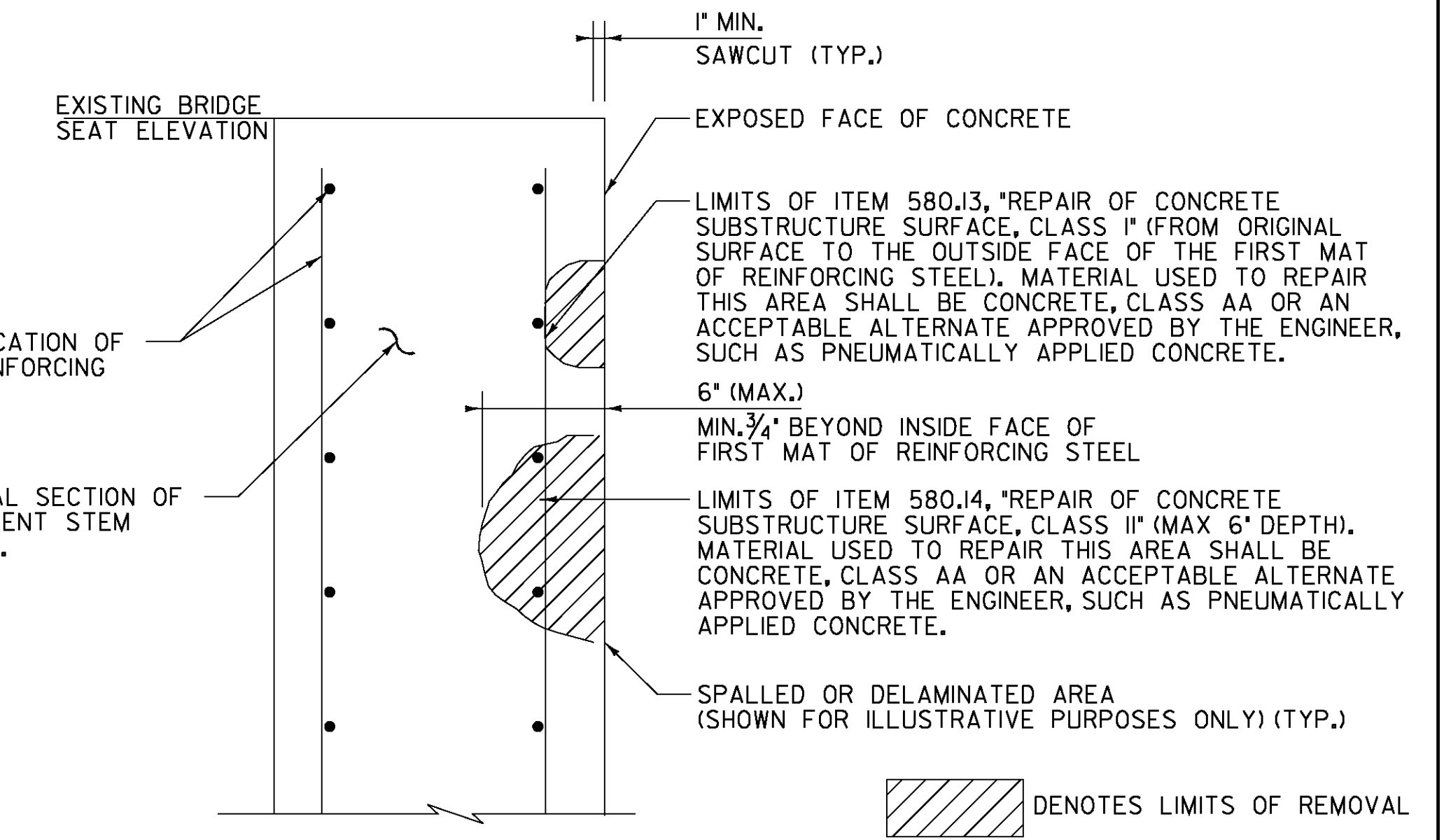
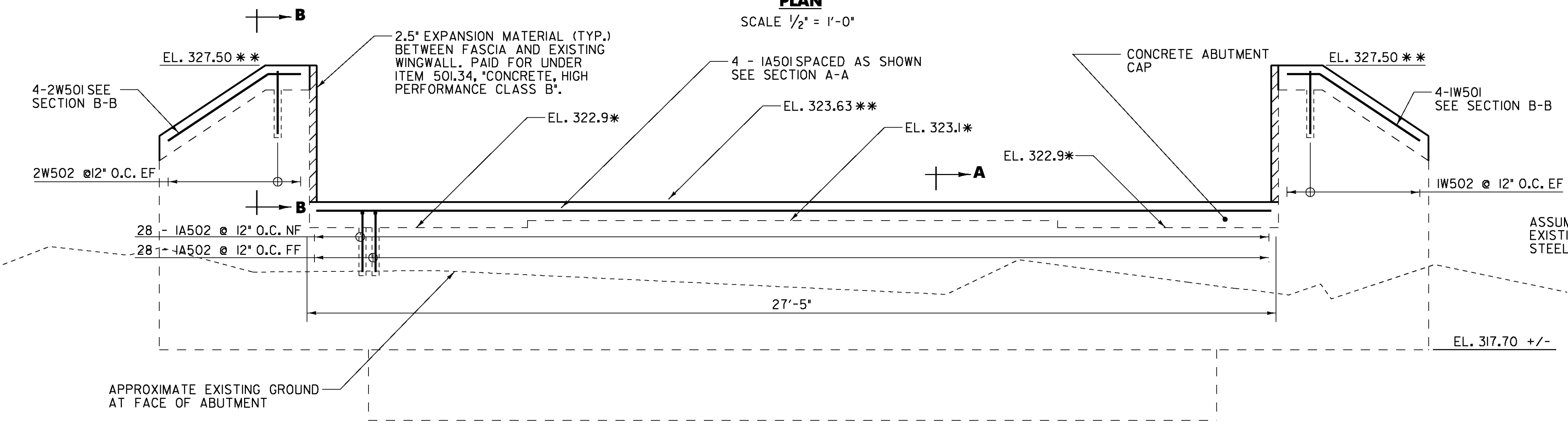


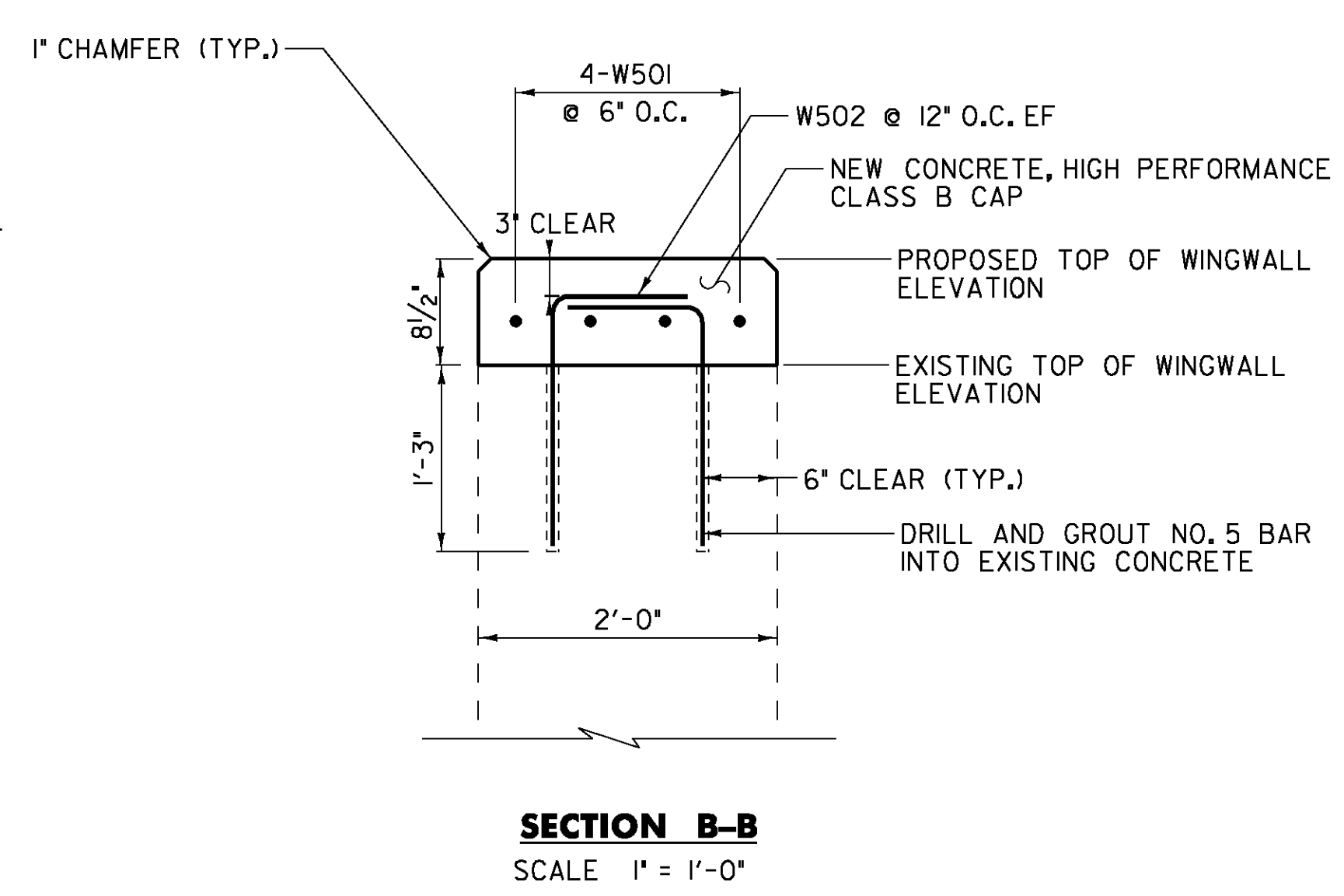
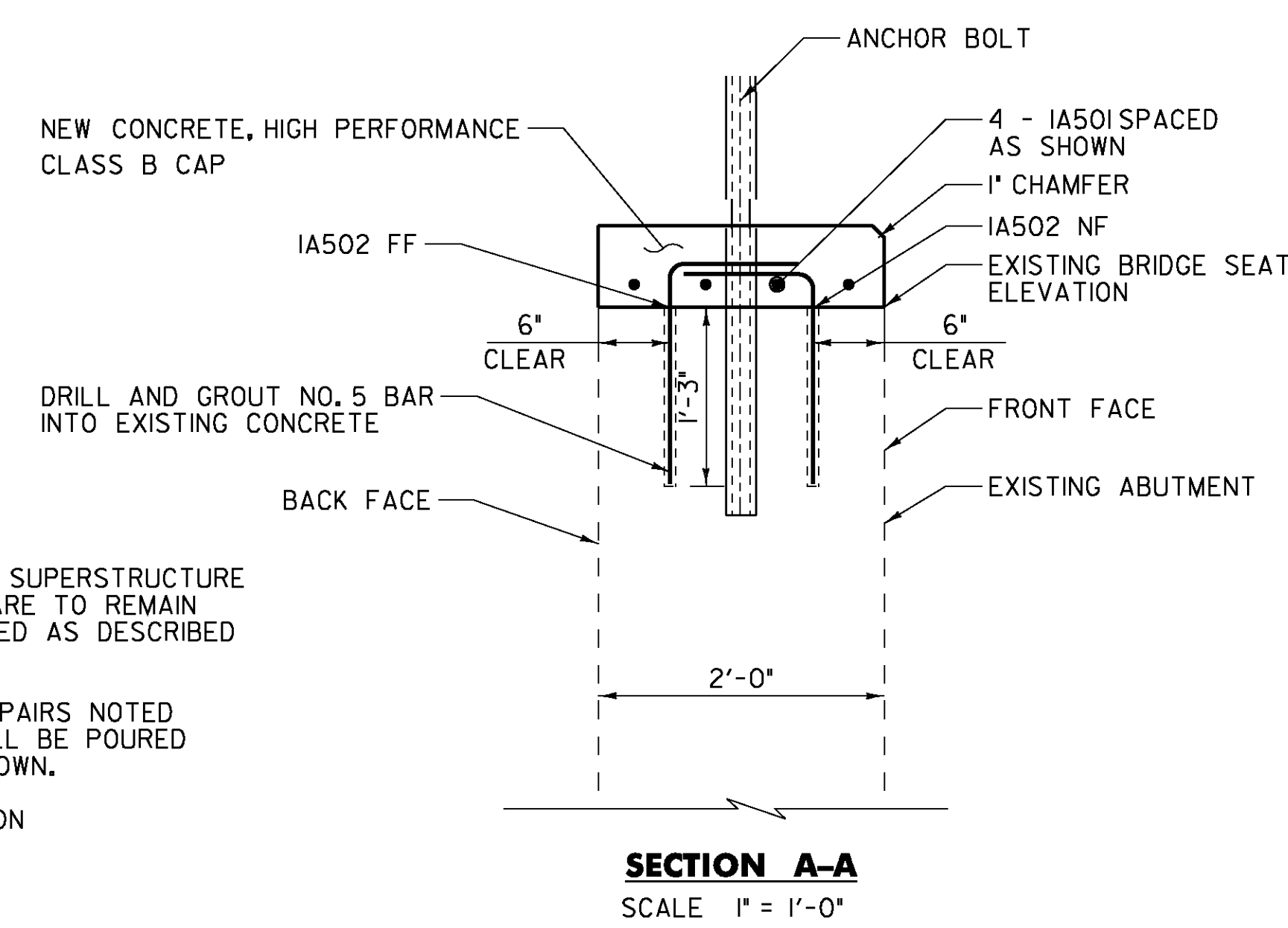
PARTIAL REMOVAL OF EXISTING ABUTMENT NO. 2
NOT TO SCALE



REPAIR OF CONCRETE SUBSTRUCTURE SURFACE CLASS I OR CLASS II
NOT TO SCALE

NOTE:
REMOVAL OF EXISTING CONCRETE TO A DEPTH GREATER THEN SPECIFIED FOR ITEM 580.J4 SHALL BE PAID UNDER THE ITEM 580.J5, "REPAIR OF CONCRETE SUBSTRUCTURE SURFACE, CLASS III".

- NOTES:**
- FOLLOWING THE REMOVAL OF THE SUPERSTRUCTURE ALL CONCRETE SURFACES THAT ARE TO REMAIN SHALL BE INSPECTED AND REPAIRED AS DESCRIBED IN NOTE 26 ON SHEET 21.
 - FOLLOWING THE CLEANING AND REPAIRS NOTED ABOVE, THE NEW BRIDGE SEAT WILL BE POURED TO THE PROPOSED ELEVATION SHOWN.
 - *APPROXIMATE EXISTING ELEVATION
**PROPOSED ELEVATIONS
 - OC = ON CENTER
NF = NEAR FACE
FF = FAR FACE
EF = EACH FACE
▲ = CUT TO FIT IN FIELD



PLOTTED 10/22/2009

DuBois & King
INC.
engineering planning management development

STATE OF VERMONT AGENCY OF TRANSPORTATION	
Town Of STOWE	Bridge No. 3
Highway No. T.H. 1	Log Sta.
	Surv. Sta.
MOSCOW ROAD OVER MILLER BROOK ABUTMENT NO. 1 DETAILS	
Designed By R.H. BARNES	Drawn By S.J. BIJOLLE
Checked By E.P. DETRICK	Bridge Design Supervisor J.W. TUCKER
Date 5/09	Date 5/09
PROJECT STOWE	PROJECT NO. BHO 1446 (30)
I.G.C. Info. ... \DGN\z99j244d1.dgn	
D & K DWG NO. 	Sheet 27 of 37