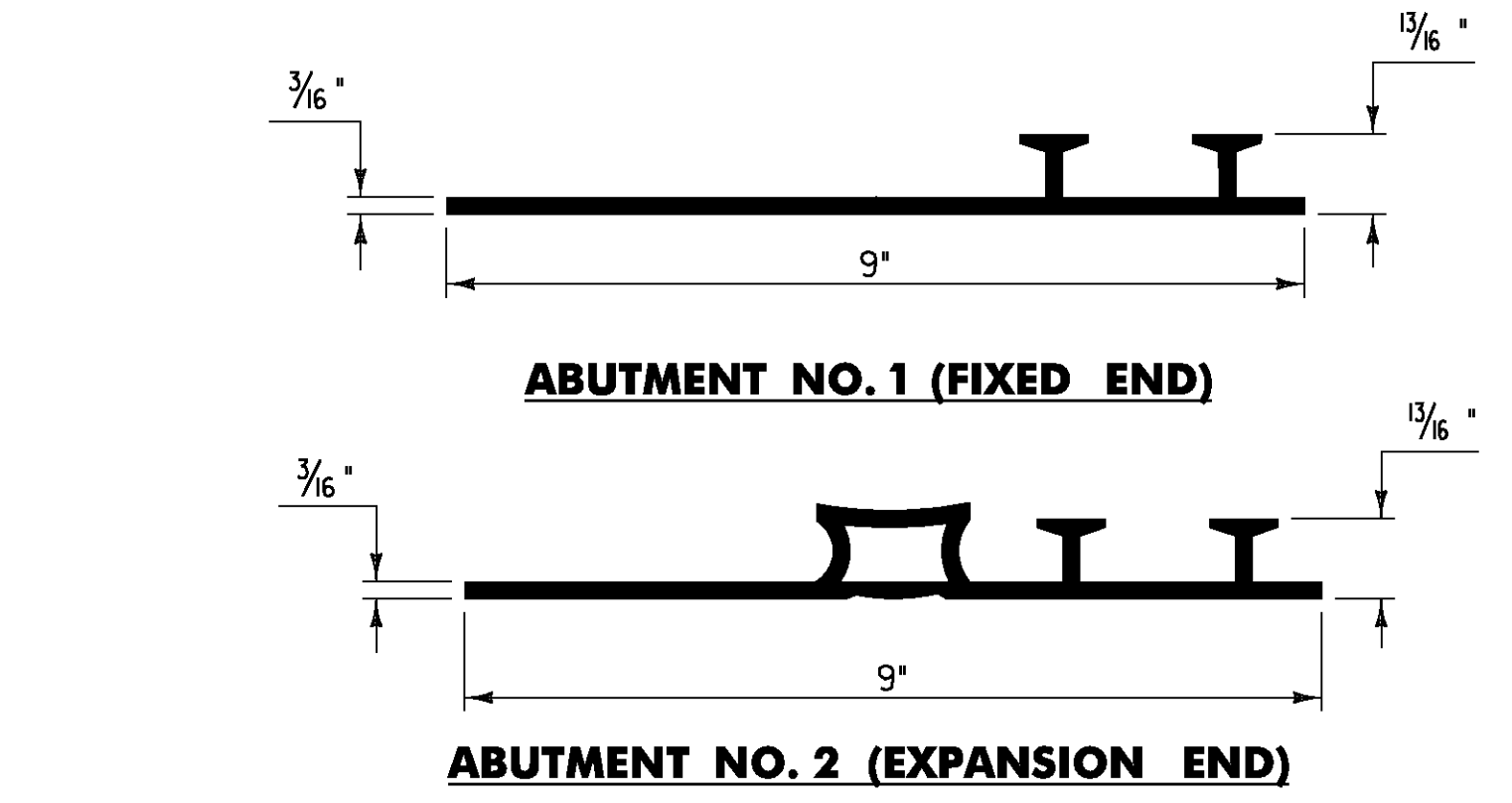
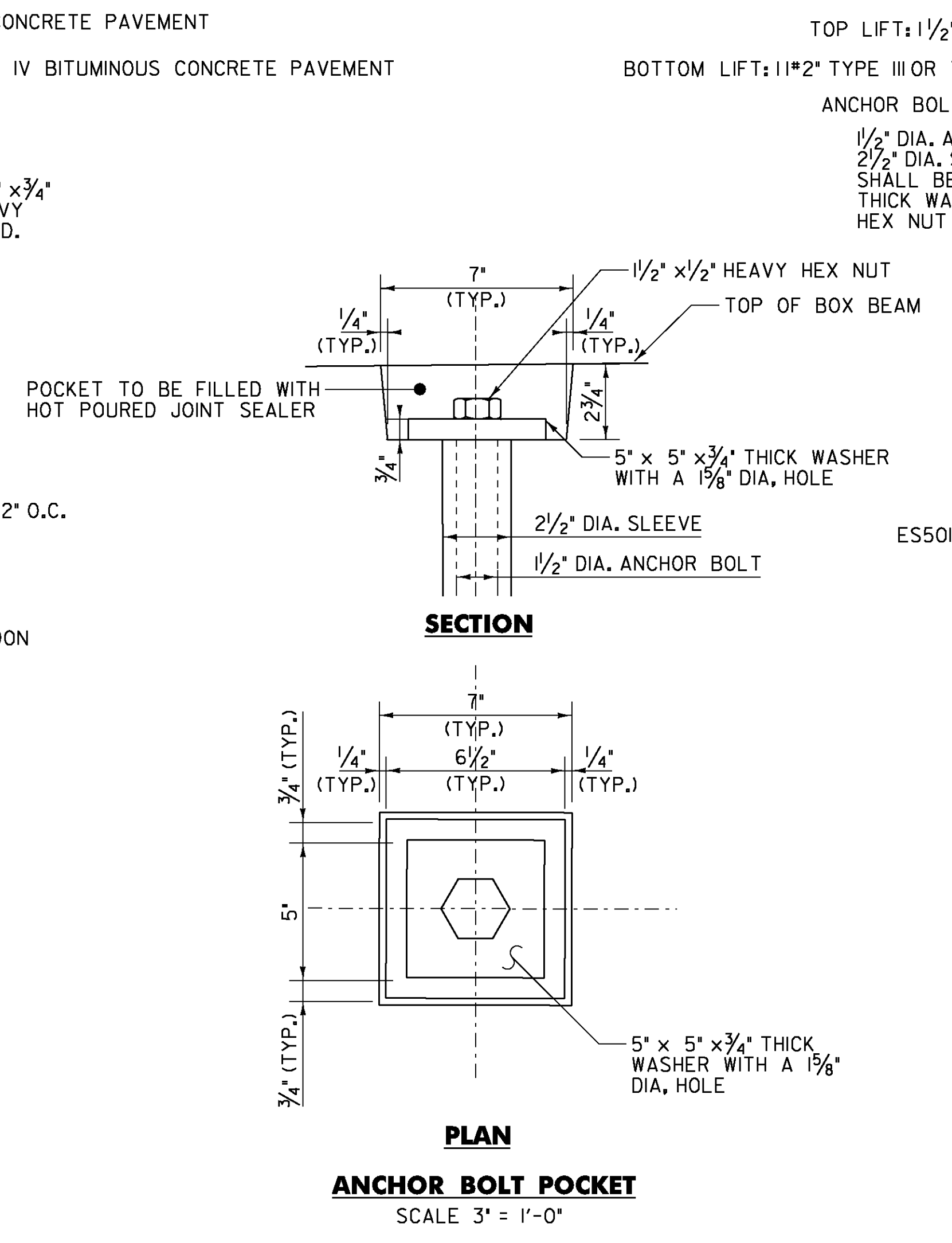


ABUTMENT NO. 1 END DETAIL (FIXED)
SCALE 1/2" = 1'-0"

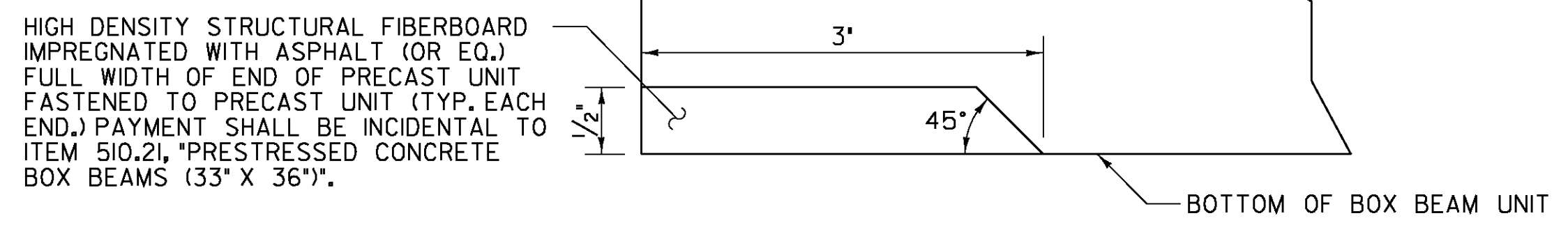


P.V.C. WATERSTOP FOR JOINT AT BEAM ENDS

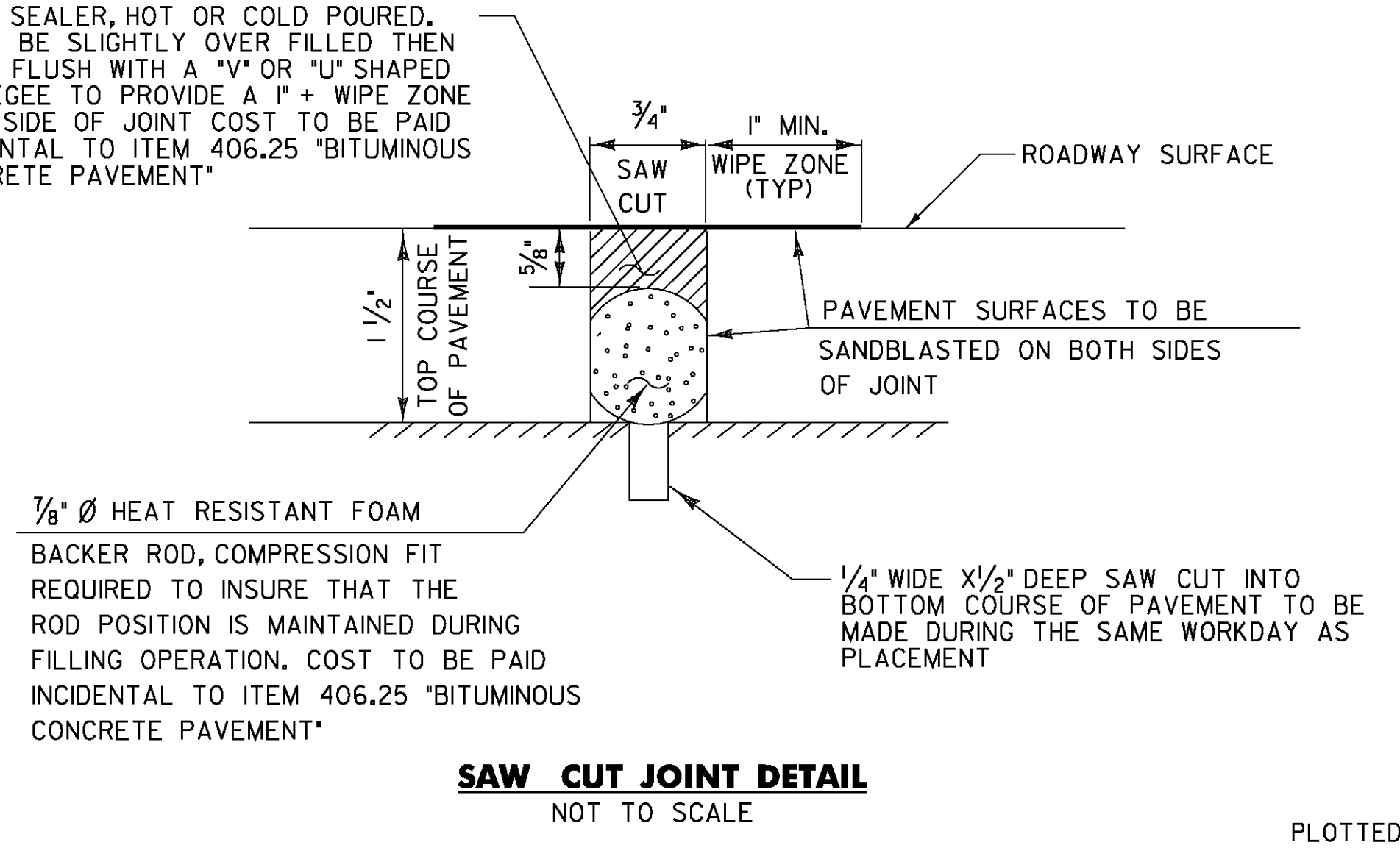
THE COSTS FOR P.V.C. WATERSTOP SHALL BE INCIDENTAL TO ITEM 501.34, "CONCRETE, HIGH PERFORMANCE CLASS B". OTHER CONFIGURATIONS MAY BE USED UPON APPROVAL OF THE STRUCTURES ENGINEER



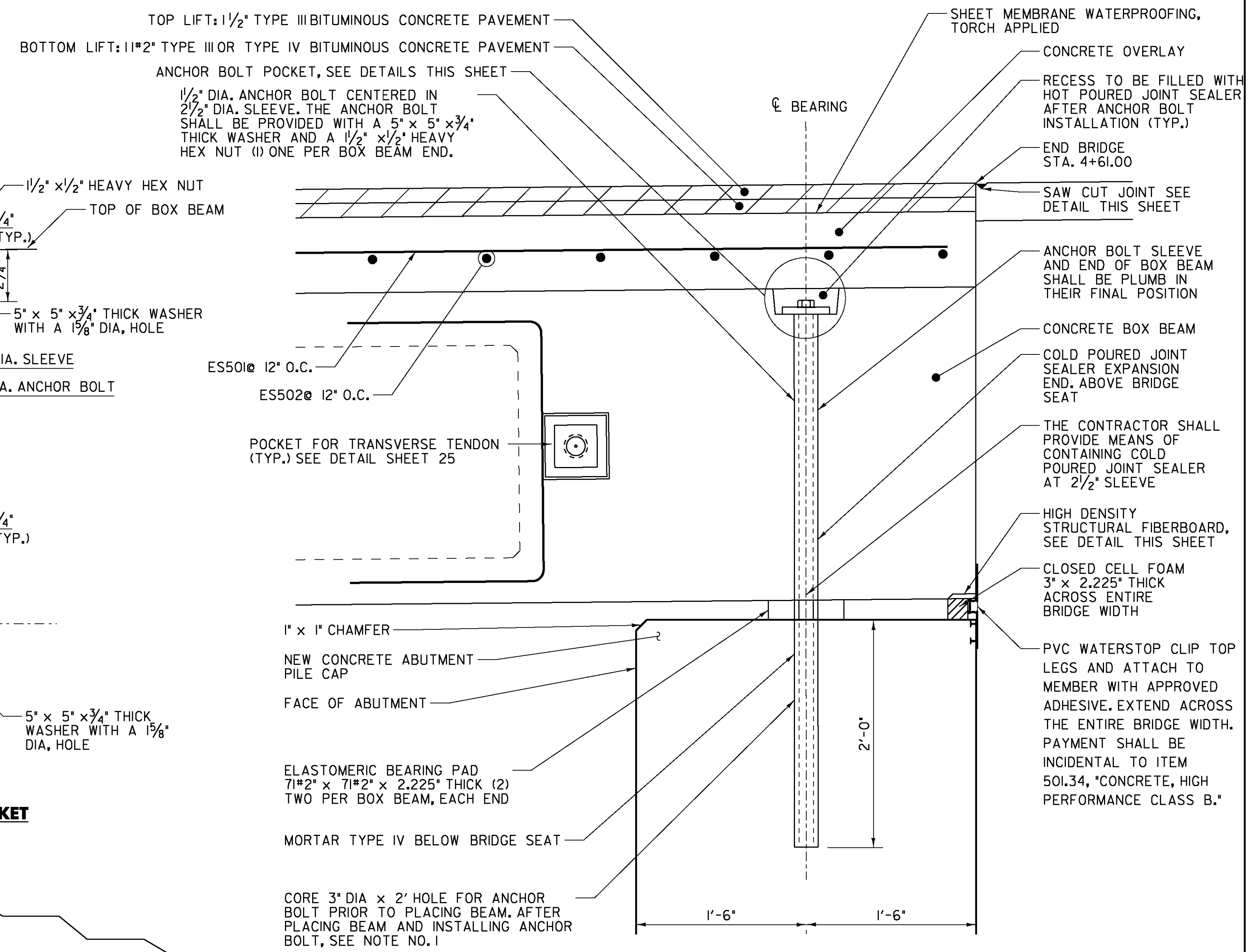
ANCHOR BOLT POCKET
SCALE 3" = 1'-0"



HIGH DENSITY STRUCTURAL FIBERBOARD DETAIL



SAW CUT JOINT DETAIL
NOT TO SCALE



ABUTMENT NO. 2 END DETAIL (EXPANSION)
SCALE 1/2" = 1'-0"

- NOTES:**
- UPON APPROVAL THE CONTRACTOR SHALL DRILL AND THOROUGHLY CLEAN ALL HOLES. THE ANCHOR RODS SHALL BE SET USING VTRANS MATERIALS AND RESEARCH APPROVED MORTAR TYPE IV. INSTALLATION OF THE ANCHOR RODS SHALL BE IN STRICT ACCORDANCE WITH MANUFACTURER'S RECOMMENDATIONS AND AS APPROVED BY THE ENGINEER.
 - ANCHOR BOLT, NUT AND WASHERS SHALL BE GALVANIZED AND CONFORM TO SUBSECTION 714.08.
 - ALL COSTS TO SUPPLY AND INSTALL THE ANCHOR BOLTS, INCLUDING ALL ASSOCIATED DRILLING AND HARDWARE AND MATERIALS SHALL BE INCLUDED IN THE COST OF ITEM 510.21, "PRESTRESSED CONCRETE BOX BEAMS (33" X 36)".

DuBois & King
INC.
engineering planning management development

STATE OF VERMONT AGENCY OF TRANSPORTATION	
Town Of STOWE	Bridge No. 3
Highway No. T.H.1	Log Sta. Surv. Sta.
MOSCOW ROAD OVER MILLER BROOK BRIDGE END DETAILS	
Designed By R.H. BARNES	Drawn By S.J. BIJOLLE
Checked By E.P. DETRICK Date 5/09	Bridge Design Supervisor J.W. TUCKER Date 5/09
PROJECT STOWE	PROJECT NO. BHO 1446 (30)
I.G.C. Info. ...DGN\z99J244d+10.dgn	
D & K DWG NO.	Sheet 23 of 37