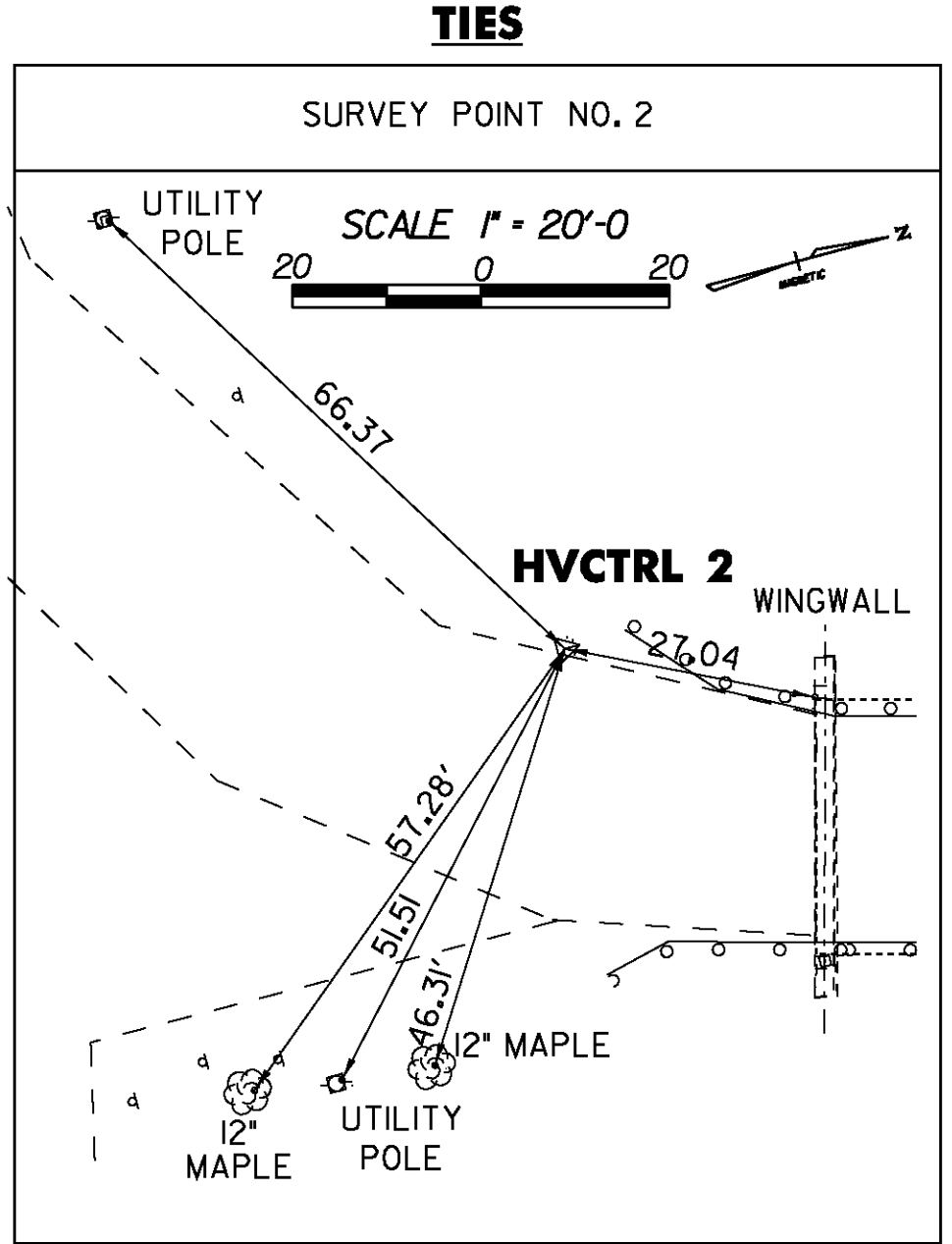


LAYOUT COORDINATES			
STA. 1+00.00	POB	N 7936.06	E 7802.76
STA. 1+51.19	PC	N 7922.62	E 7852.15
STA. 2+06.06 BK	PI	N 7908.21	E 7905.10
STA. 2+59.19	PCC	N 7917.51	E 7959.18
STA. 3+29.34 BK	PI	N 7929.40	E 8028.32
STA. 3+84.00	BEGIN BRIDGE	N 7997.01	E 8046.68
STA. 3+84.09	PT	N 7997.10	E 8046.70
STA. 4+61.00	END BRIDGE	N 8063.56	E 8064.74
STA. 4+63.35	PC	N 8073.60	E 8067.47
STA. 4+76.72 BK	PI	N 8086.50	E 8070.97
STA. 4+90.08	PT	N 8099.09	E 8075.45
STA. 5+00.01	PC	N 8108.45	E 8078.77
STA. 6+46.21 BK	PI	N 8246.21	E 8127.73
STA. 7+87.00	PT	N 8346.81	E 8233.82
STA. 8+85.70	POE	N 8414.73	E 8305.44
HVCTRL 1	CONTROL POINT	N 8083.99	E 8083.99
HVCTRL 2	CONTROL POINT	N 7976.16	E 8021.73

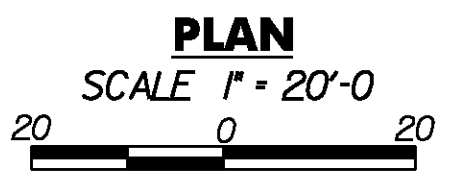


**BEGIN PROJECT  
BHO 1446 (30)  
(MATCH EXISTING)  
STA 3+25.00**

**BEGIN BRIDGE  
STA 3+84.00  
F. G. ELEV. 327.48**

**END BRIDGE  
STA 4+61.00  
F. G. ELEV. 328.22**

**END PROJECT  
BHO 1446 (30)  
(MATCH EXISTING)  
STA 5+25.00**



**EXISTING LEGEND**

EDGE OF RIVER	---
EDGE OF ROAD	----
ROW	-----
GUARD RAIL	.....
TREE LINE	~~~~~
UTILITY POLE	☆
SIGN	▲
TREES	⊗
CENTERLINE OF ROAD	- - - - -



**STATE OF VERMONT  
AGENCY OF TRANSPORTATION**

Town Of	STOWE	Bridge No.	3
Highway No.	T.H.1	Log Sta.	
		Surv. Sta.	

**T.H. NO. 1 OVER MILLER BROOK**

**TIE SHEET**

Designed By	B.C. AUSTIN	Drawn By	E. B. SMALL
Checked By	Date	Bridge Design Supervisor	
J. W. TUCKER	07/02	J. W. TUCKER	Date 07/02
PROJECT	STOWE	PROJECT NO.	BHO 1446 (30)
I.G.C. Info.	... \DGN\z99J244bdr.dgn		
D & K DWG NO.		Sheet	7 of 37

**DATUM**

VERTICAL	ASSUMED
HORIZONTAL	ASSUMED

PLOTTED 10/22/2009