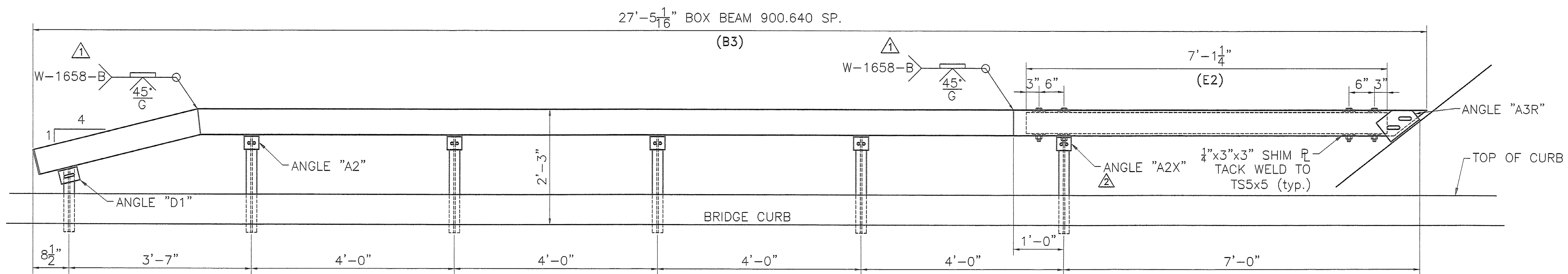
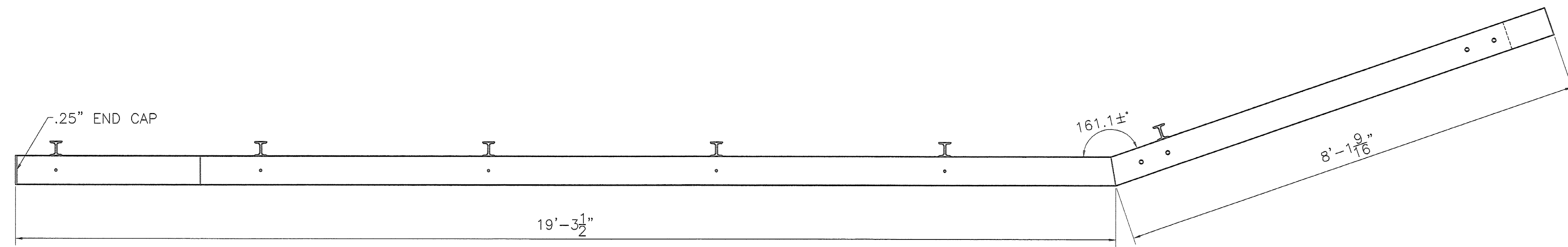
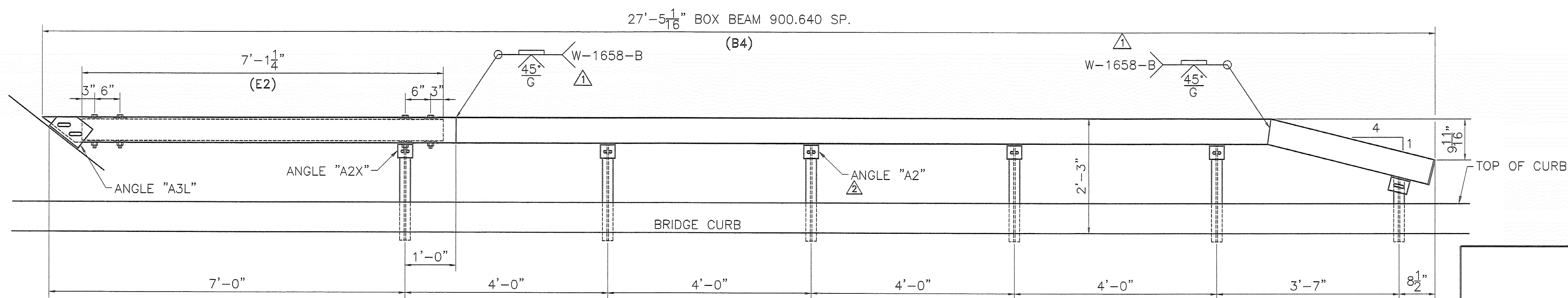
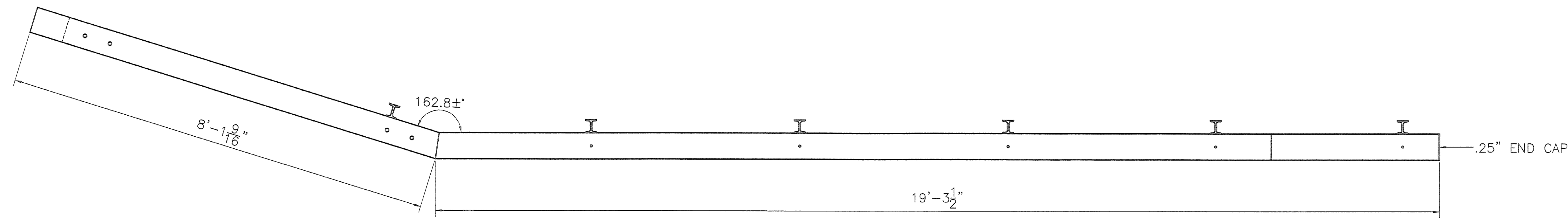


BILL OF MATERIAL					
Mk.	Qty.	Description	Size/Shape	Length/Qty per unit	Material
	10	DRIVEN POST	S7x7.5	5'-3"	M270 Gr. 36
	2	DRIVEN POST	S7x7.5	3'-8"	M270 Gr. 36
A2	8	SHELF ANGLE	L5x3.5x.375	3.5"	M270 Gr. 36
A2X	2	SHELF ANGLE	L5x3.5x.375	3.5"	M270 Gr. 36
A3R	1	SLOTTED CONNECTION ANGLE	L6x6x.375	8.5"	M270 Gr. 36
A3L	1	SLOTTED CONNECTION ANGLE	L6x6x.375	8.5"	M270 Gr. 36
D1	2	END ANGLE	L5x3.5x.375	4.5"	M270 Gr. 36
	2	END CAP	5.688x.25	5.688	M270 Gr. 36
	12	BENT CAP PLATE	.25"x2.5"	3"	M270 Gr. 36
B3	1	ANGLED BOX BEAM	TS 6x6x.187	27'-5.063"	A500 Gr. B
B4	1	ANGLED BOX BEAM	TS 6x6x.187	27'-5.063"	A500 Gr. B
E2	2	BOX BEAM	TS 5x5x.25	7'-1.25"	A500 Gr. B
	12	HEX BOLT W/HEX NUT & 2 WASHERS	.75" DIA.	7.5"	A325
	2	HEX BOLT W/HEX NUT & 2 WASHERS	.75" DIA.	8"	A307
	8	HEX BOLT W/HEX NUT & 2 WASHERS	.375" DIA.	7.5"	A307
	4	HEX BOLT W/HEX NUT & WASHER	.875" DIA.	3"	A325
	12	HEX BOLT W/HEX NUT	.50" DIA.	1.5"	A307
	16	SHIM PLATE	.25"x3"	3"	A36



SW CORNER



SE CORNER

REVISIONS		
No.	Remarks	Date
0	Initial submittal	9-16-08
1	Per engineer's comments	10-6-08
2	As built changes	10-15-08



**HIGHWAY SAFETY CORP.**  
GLASTONBURY, CT

RAILING REPLACEMENT  
ITEM 900.640 SPECIAL PROVISION  
RICHFORD, VERMONT  
PROJECT NO. BHF 0302 (3) S

GENERAL CONTRACTOR: F.R. LAFAYETTE  
DRAWN: MHM  
CHECKED: P Radice  
DATE: 7/30/08  
SCALE: N.T.S.  
HSC REFERENCE NO.: 1660  
SIZE: D REVISION: 2  
SHEET NO.: 2 of 4