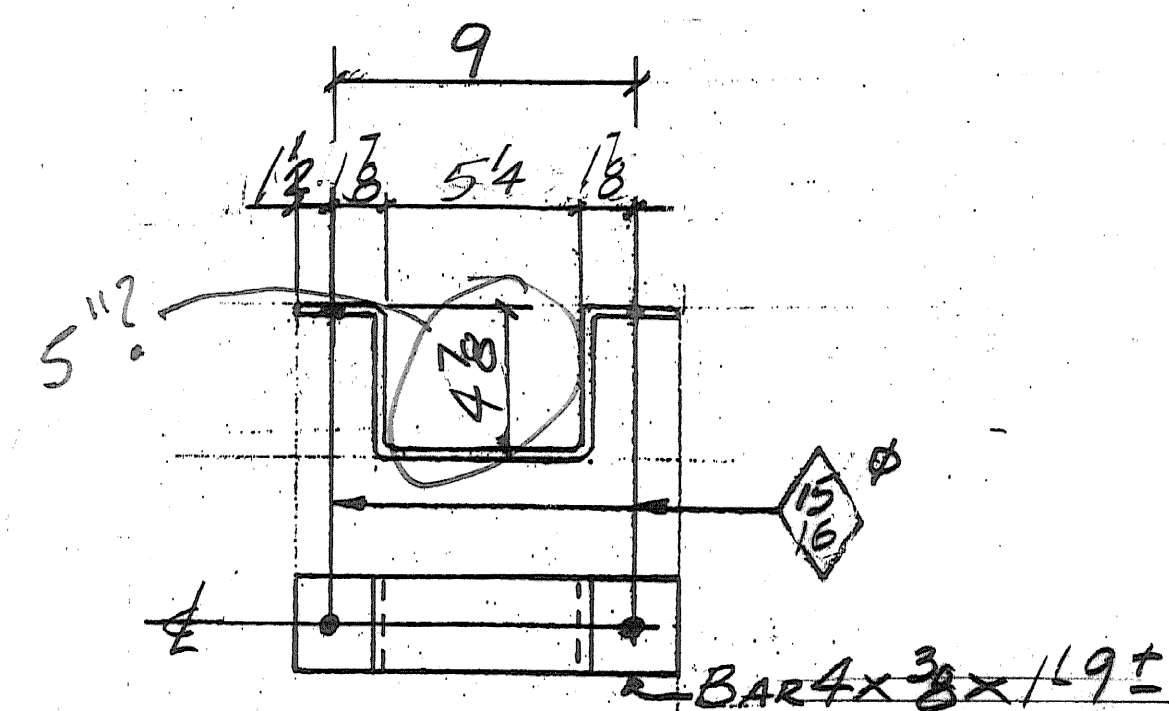
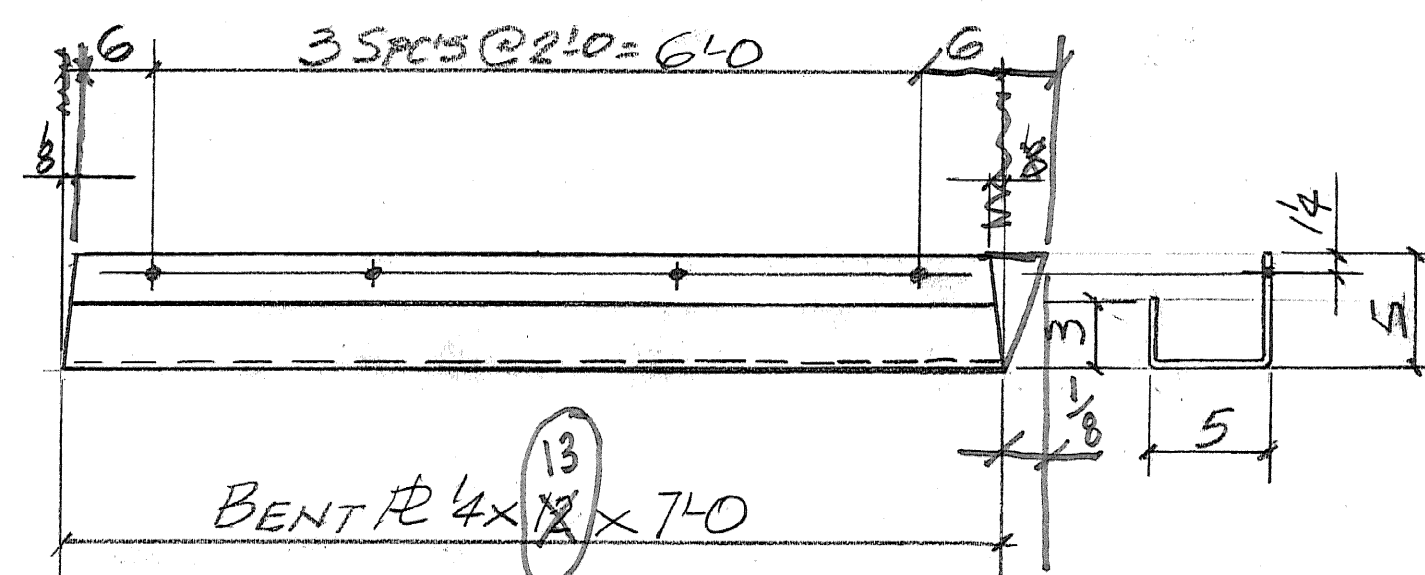


DS1-ONE REQ'D (@ NORTH END ABUT. #1)
DS2-ONE REQ'D (@ SOUTH END ABUT. #1)



SAI-2-REQ'D

INCLUDE
4-3/4" x 9" EXP. BOLTS



GUTTER-GI-2-REQ'D.

INCLUDE
8-3/4" x 9" EXP. BOLTS

SHOP DRAWINGS ARE REVIEWED UNLESS NOTED OTHERWISE

NO EXCEPTION TAKEN	
REVISE AS NOTED	
RESUBMISSION NOT REQUIRED	✓
REVISE AS NOTED	
RESUBMISSION REQUIRED	
REJECTED	
DATE	4/17/08
SIGNATURE	<i>Scott Beal</i>

REVIEW BY STANTEC IS FOR THE SOLE PURPOSE OF ASCERTAINING GENERAL CONFORMITY WITH DESIGN. CONTRACTOR IS RESPONSIBLE FOR DIMENSIONS, FABRICATION AND CONSTRUCTION METHODS. COORDINATION OF SUB-TENDERS, DETAIL DESIGN OF COMPONENTS, AND ERRORS OR OMISSIONS ON SHOP DRAWINGS.

ABM INFO		SHOP BILL		JOB NO.	DRG. NO.				
				351	M2				
PAGE	LINE	NO.	DESCRIPTION	FT	IN	ASSEM MARK	SHIPPING MARK	REMARKS	WEIGHT
	1		DOWNSPOUT	8	0		DS1		
	1		DO	8	0		DS2		
	2		TS 5x5x1/4	8	0			PER SUBJECT DRAWING	
	2		BAR 4x3/8	1	9		SAI	BEND	
	2		R 4x12	7	0		GI	BEND	
	12		3/4" EXP. BOLTS	9				FIELD W/NEW	
PAY ITEM: 506.60									

OUT FOR APPROVAL	3/20/08								
OUT FOR APPROVAL									
ISSUED TO SHOP									
FIELD & OFFICE									

REV.	REMARKS	DATE	DWN	CHK	APP	Q.A.	NO.	DIA.	LGT	TYPE	WASHER
	PROJECT NO. BHF-0302(3) S STATE PROJECT NO.										
	MATERIAL: A36 STEEL ELECTRODES: SEE PROC. HOLES: 1/8" Ø SHOP BOLTS: -										
	SURFACE PREP. & PAINT:										

GALVANIZE PER SUBJECT, 506.15 - PART (a)

DESCRIPTION: DOWNSPOUTS	DRAWN BY	DATE
JOB:	JPF	3-08
	CHKD BY	CR
	APPROV BY	
	Q.A.	

CUSTOMER: BLOW & COTE INC.	JOB NO.	DRG. NO.
CASCO BAY STEEL STRUCTURES, INC.	361	M2
75 SPRING HILL ROAD SACO, MAINE 04072	PHONE (207) 282-7360	FAX (207) 282-1179
	REV.	△