

Contractor is Field Verify width Between Top of Existing CURBS

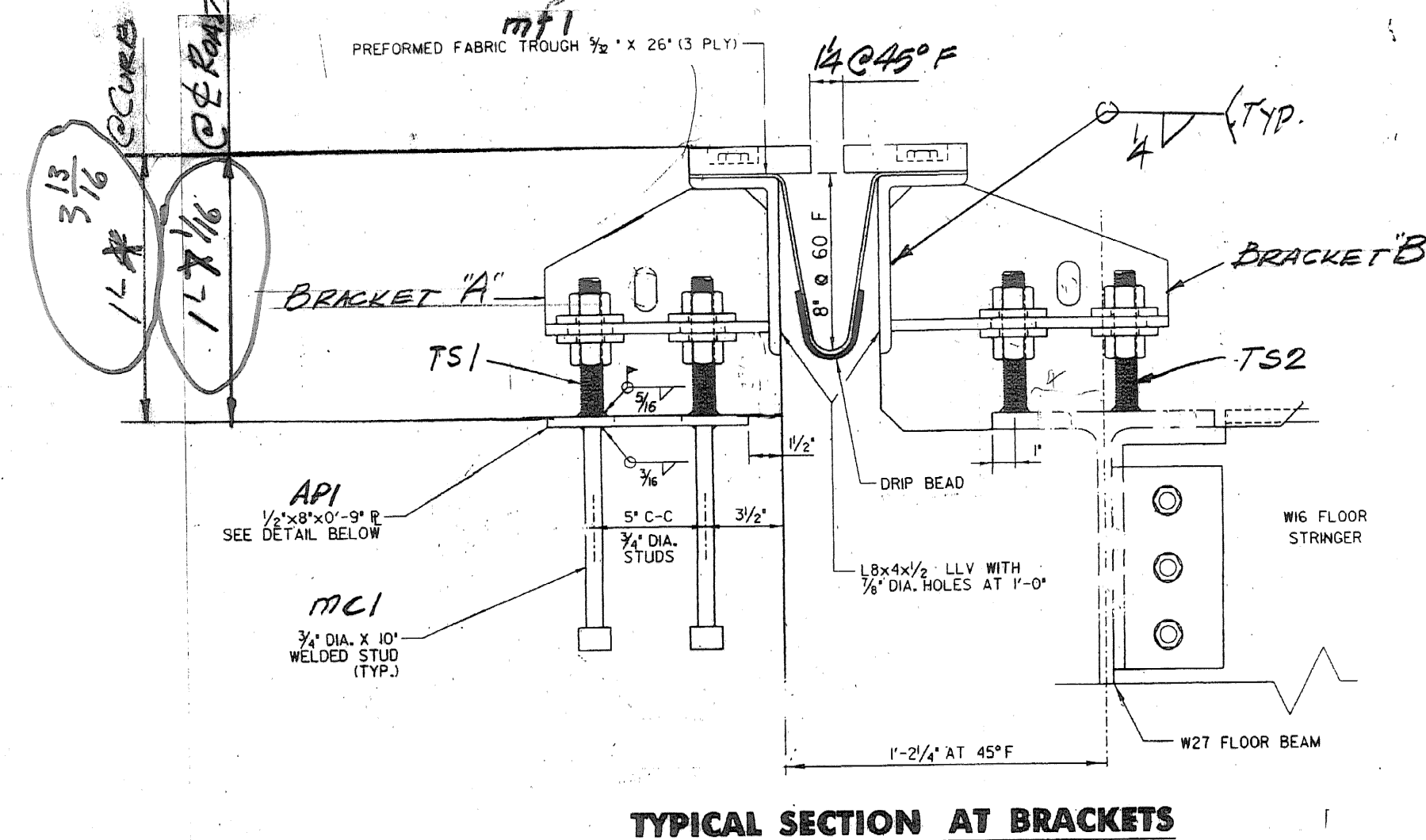
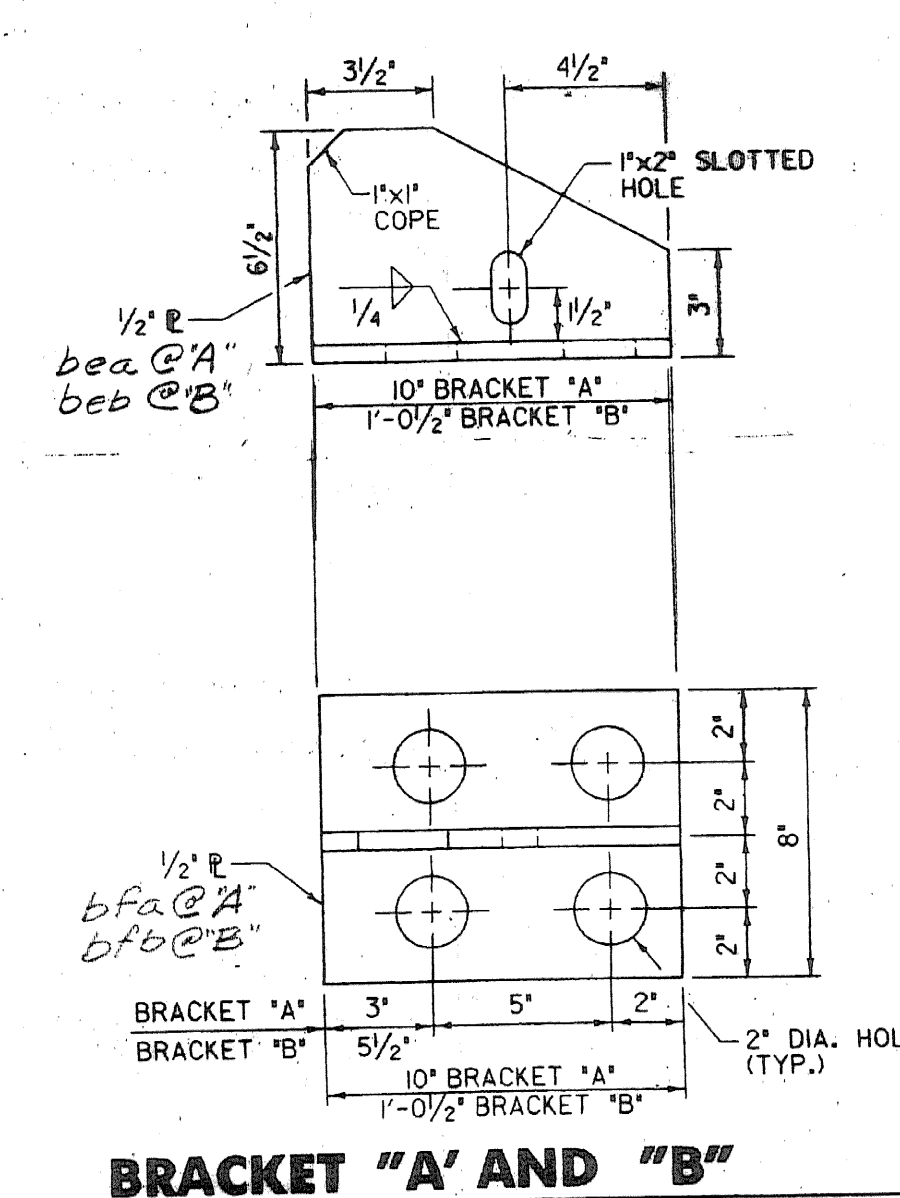
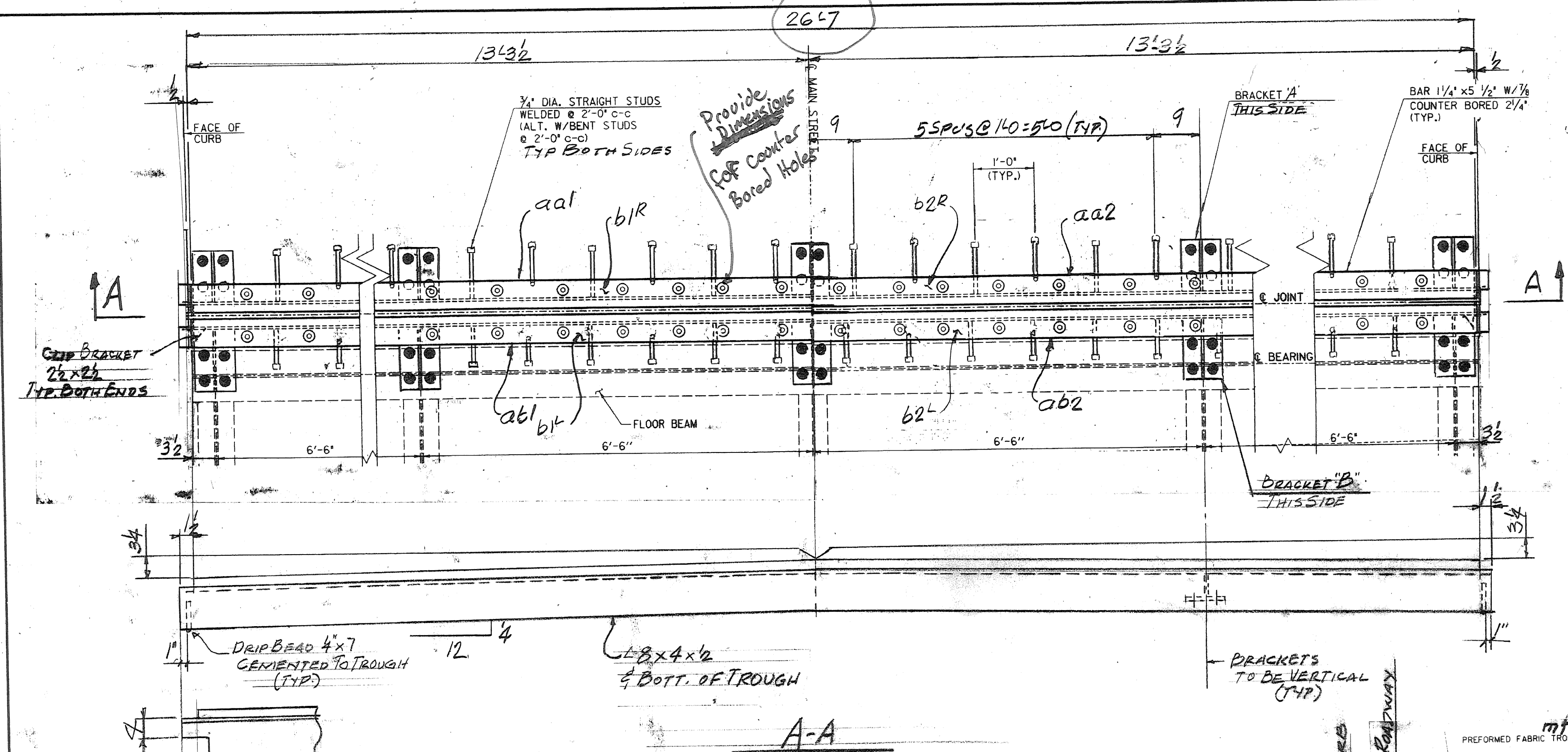
SHOP BILL				JOB NO. 351	DRG. NO. J1				
PAGE	LINE	NO.	DESCRIPTION	FT	IN	ASSEM. MARK	SHIPPING MARK	REMARKS	WEIGHT
		1	EXP. JOINT	26	03		EJ1		
		1	L8x4x2	13	5	aa1			
		1	DO	13	5	ab1			
		1	DO	13	5	aa2			
		1	DO	13	5	ab2			
		2	BAR 5/8x1/4	13	3 1/2	b1a		FURNISH EQUAL LENGTHS	
		2	DO	13	3 1/2	b2a		DO	
		5	R2x6	10		bea			
		5	DO	1		beb			
		5	R2x8	10		b1a			
		5	DO	1		b1b			
		56	3/4" HEX BOLTS	22		mcl		W/HEAVY PLASTIC CAPS	
		48	3/4" ANC STUDS	10		mcl			
		1	PERFORMED FABRIC TROUGH 5/8x2x6	27	04	mfl		SPLY PER SUBJECT 707.07	
		2	BUTYL RUBBER TAPE 1/2x3	27	04	mgl		PER SUBJECT 707.07	
		20	1" HEADON ROVS 1	1		TS1		A307	
		20	DO	7		TS2		A307	
		80	1" HEX NUTS			FIELD			
		80	R3/8x3	3		W1		R. WASH	
		5	R2x8	9		API			
		20	3/4" ANC STUDS	10		mcl			
		6	L4x4x1/2	1		sa1			
		12	3/4" BOLTS	3		SHOP			

PAY ITEM: S16.11

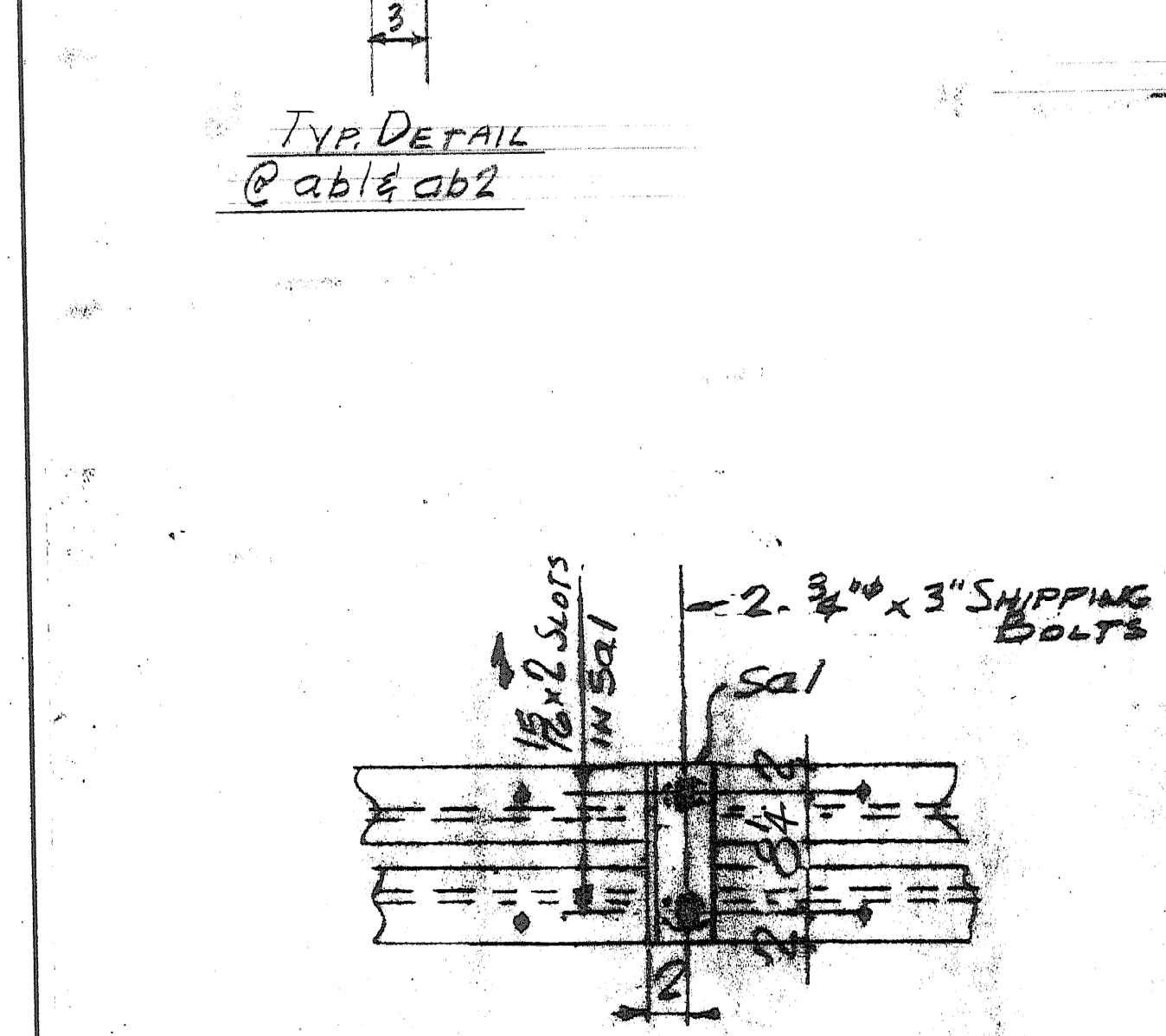
OUT FOR APPROVAL	3/29/08
OUT FOR APPROVAL	
ISSUED TO SHOP	
FIELD & OFFICE	

REV.	REMARKS	DATE	DWN	CHK	APP	Q.A.	NO.	DIA.	LGT	TYPE	WASHER
PROJECT NO. BHF-0302(3)S STATE PROJECT NO.											
MATERIAL: AASHTO M270 (A36) ELECTRODES: SEE PROC HOLES: AS NOTED SHOP BOLTS: 3/8" A325 GALV.											
SURFACE PREP. & PAINT: GALVANIZE PER SUB SECT. 506.15											

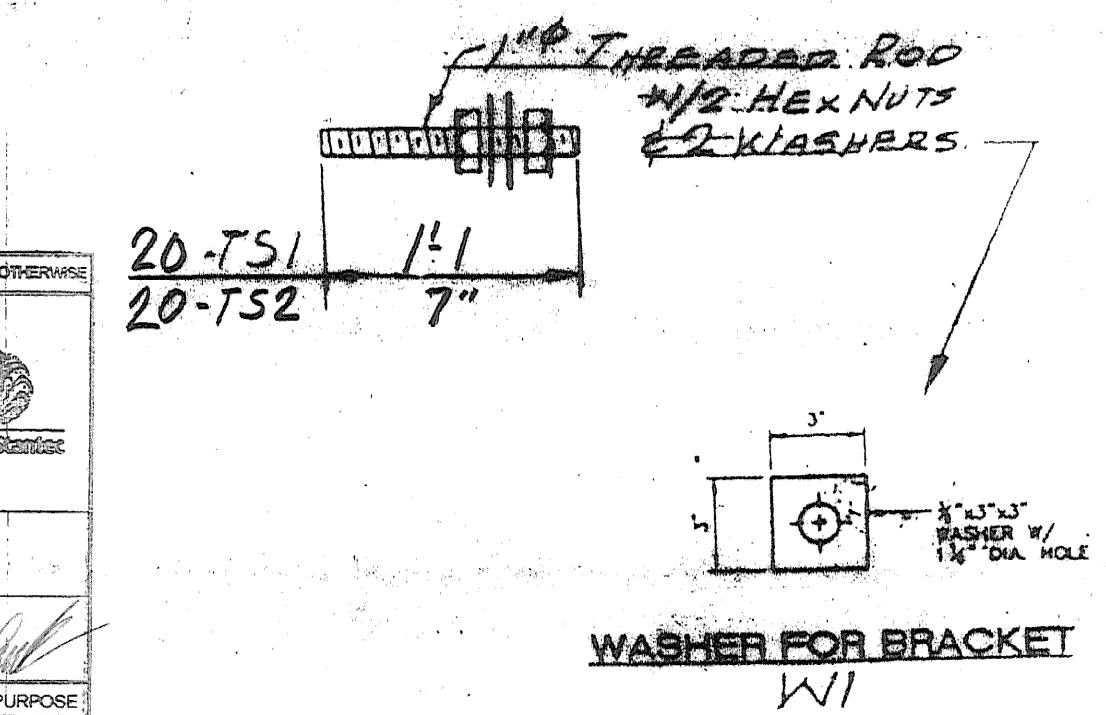
DESCRIPTION: EXP. JOINT ABUT. #1	DRAWN BY: JPF	DATE: 3-08
JOB: IMPROVEMENTS BRIDGE No. 41 ON TH. No. 2 RICHFORD, VT.	CHKD BY: CR	APPROV BY:
CUSTOMER: BLOW & COTE INC.	Q.A.	
CASCO BAY STEEL STRUCTURES, INC.	JOB NO. 361	DRG. NO. J1
75 SPRING HILL ROAD SACO, MAINE 04072	PHONE (207) 282-7360	FAX (207) 282-1179
		REV. $\Delta$



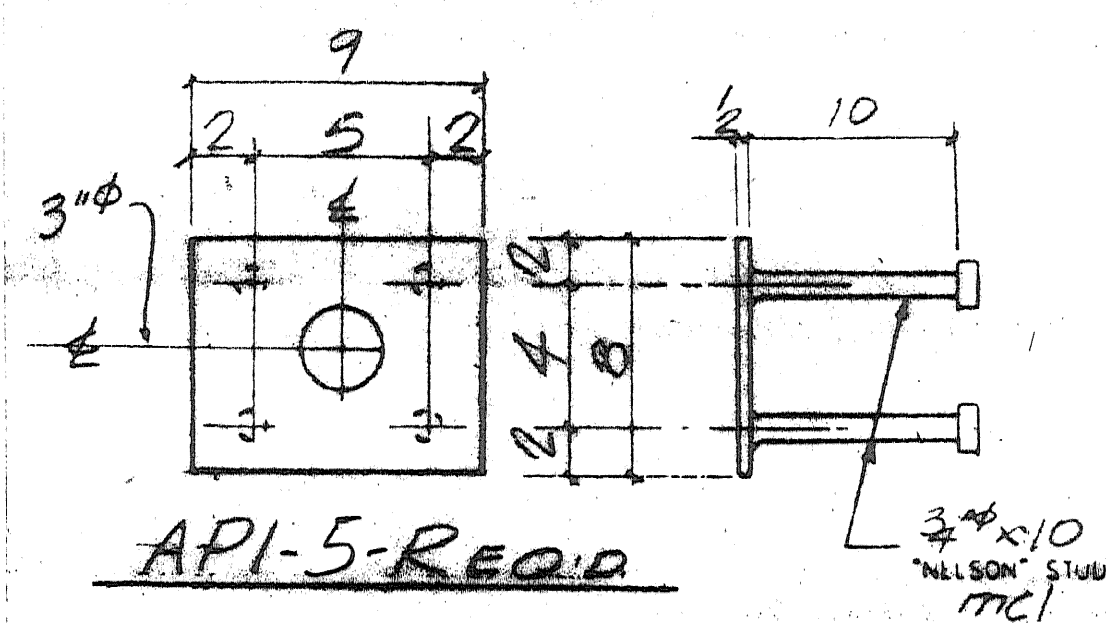
TYPICAL SECTION AT BRACKETS



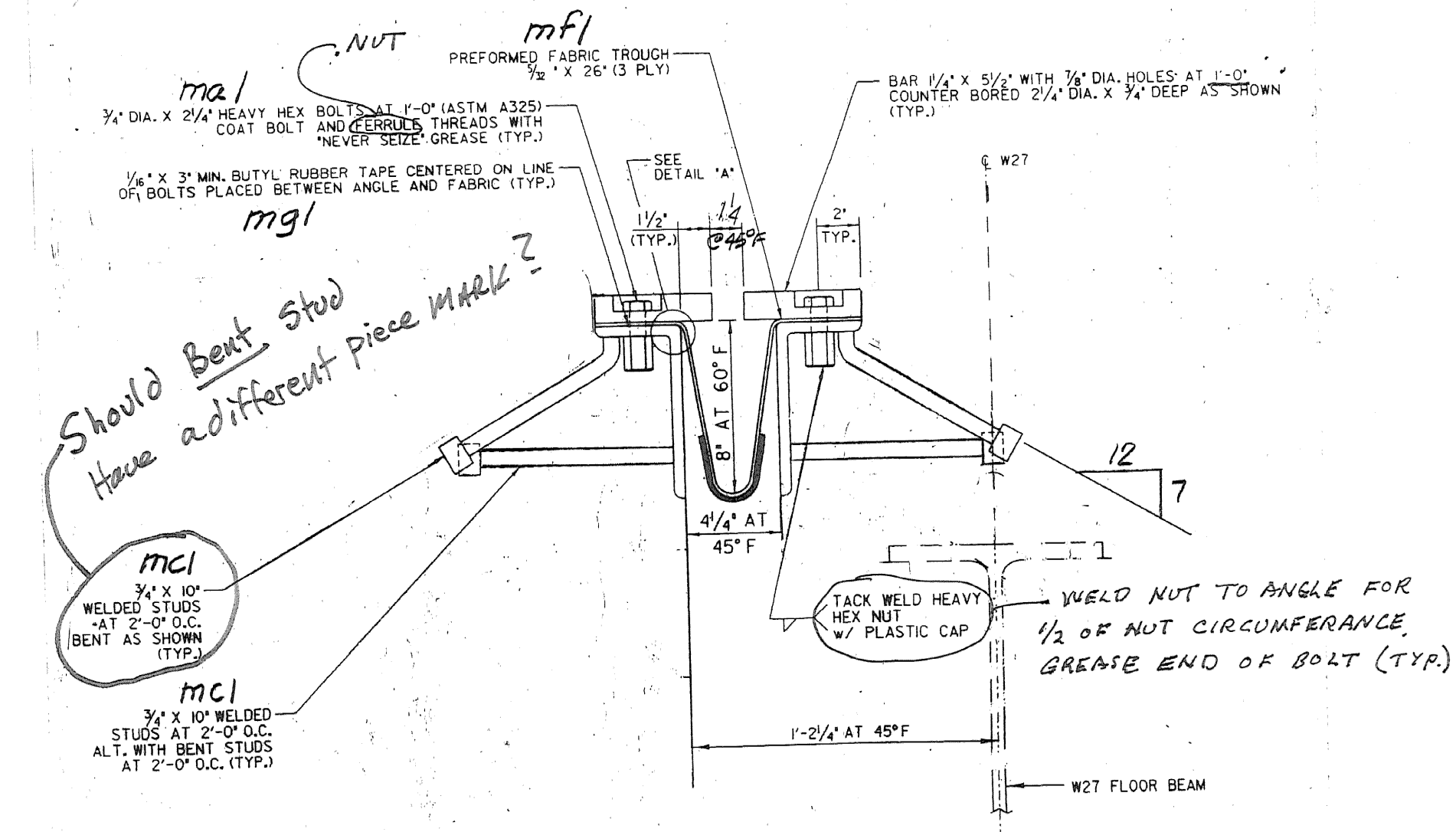
SHIPPING DEVICE SPACED 5" O.C. MAX



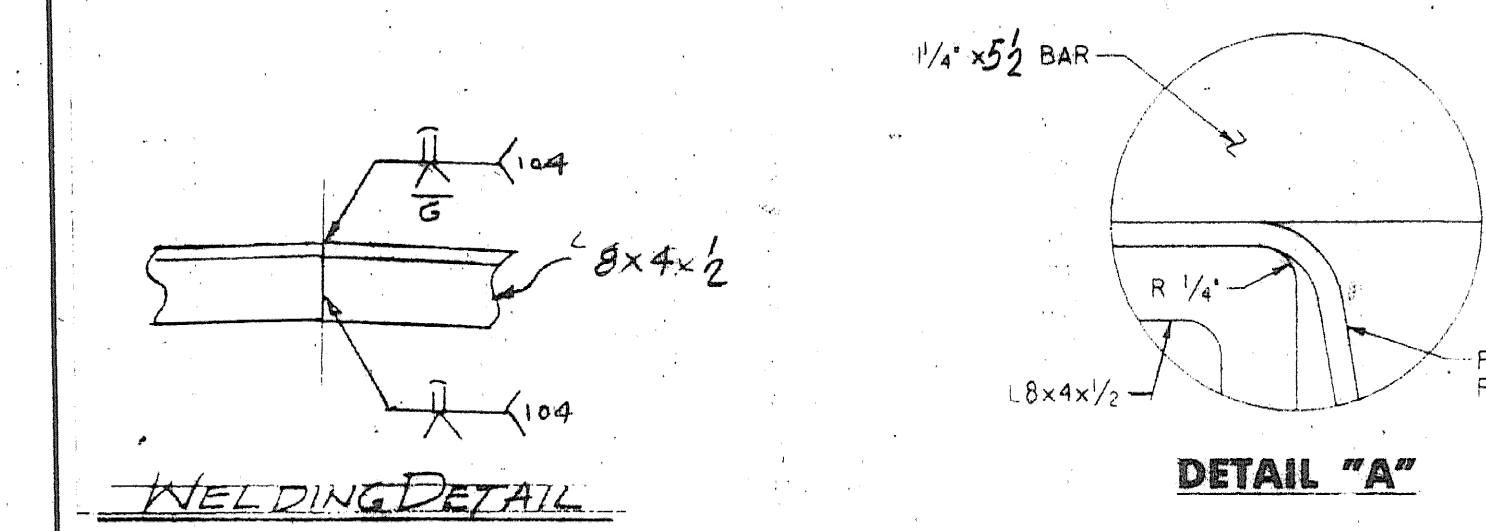
WASHER FOR BRACKET W1



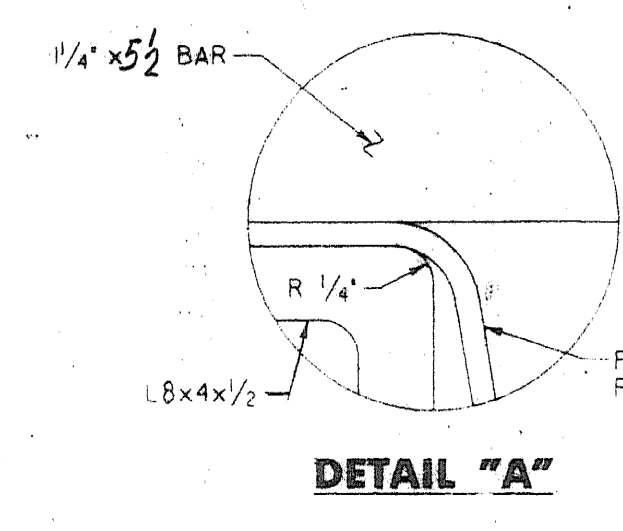
API-5-REQ'D



TYPICAL SECTION BETWEEN BRACKETS



WELDING DETAIL



DETAIL "A"