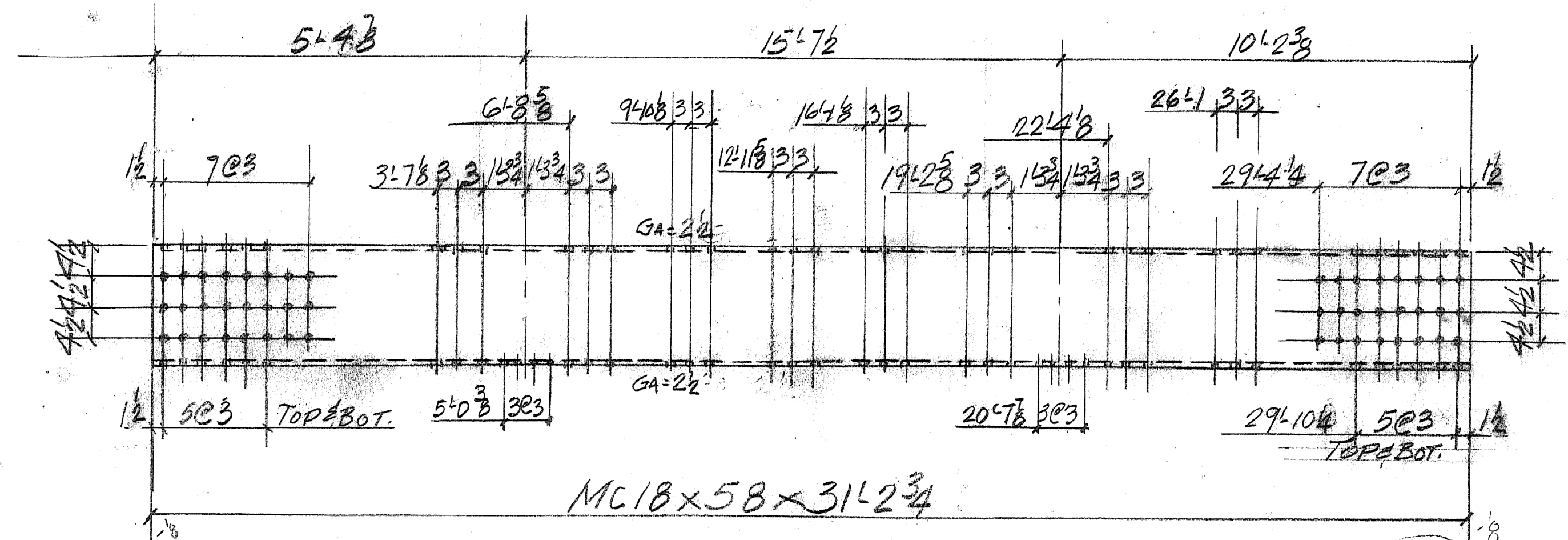
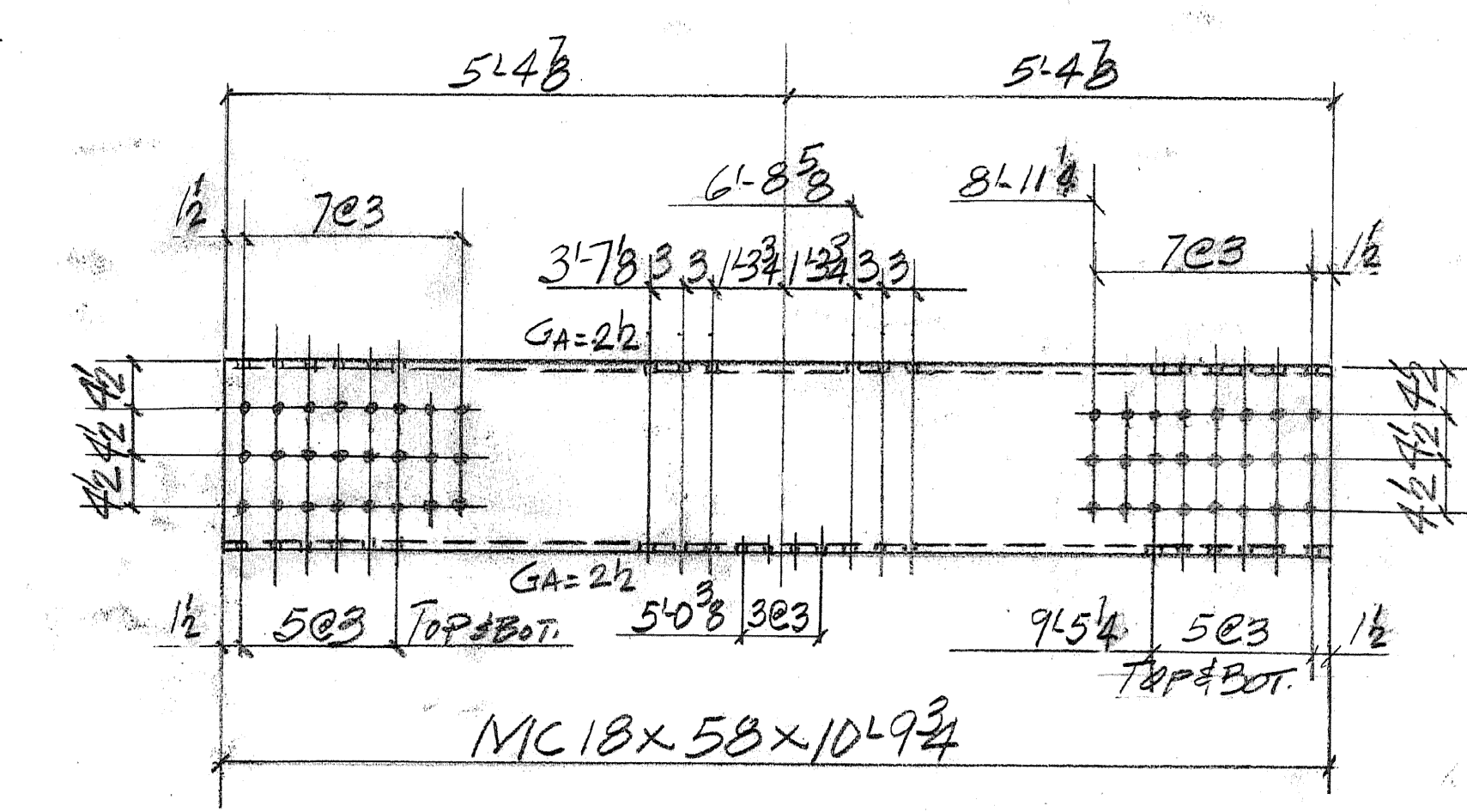


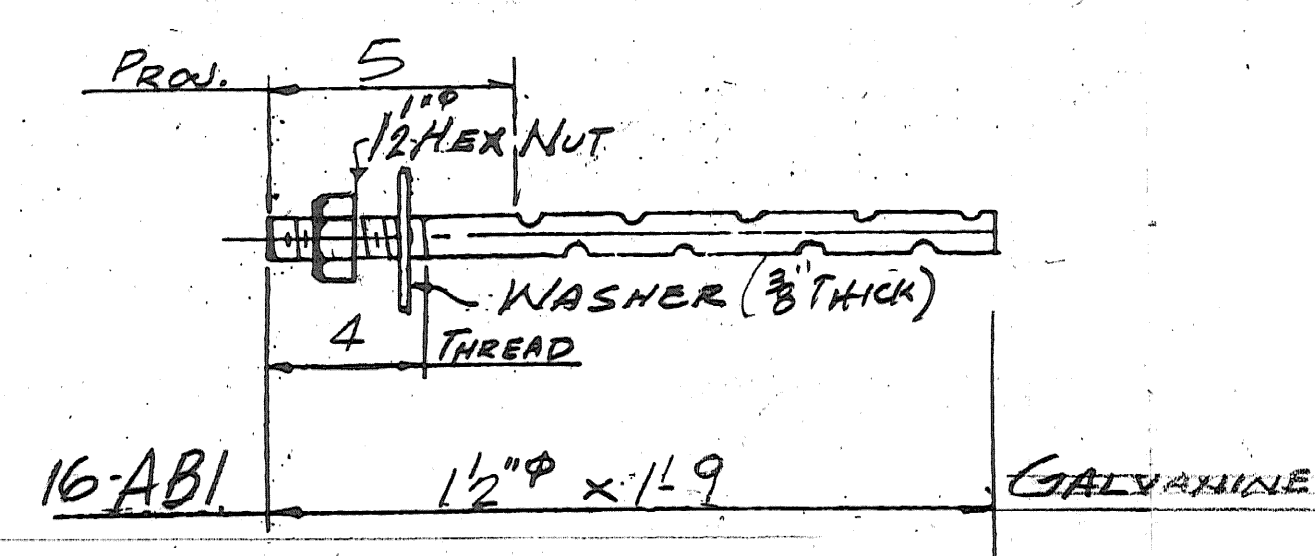
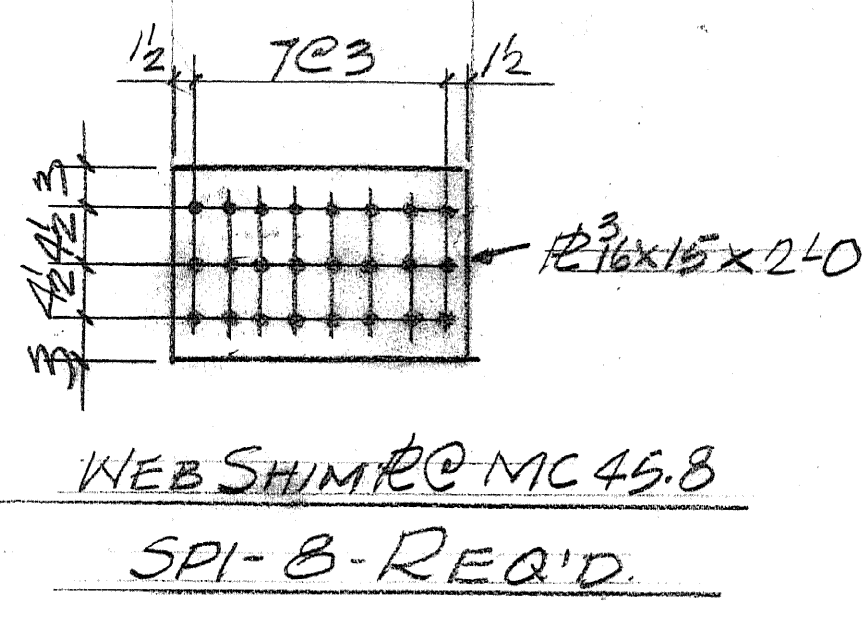
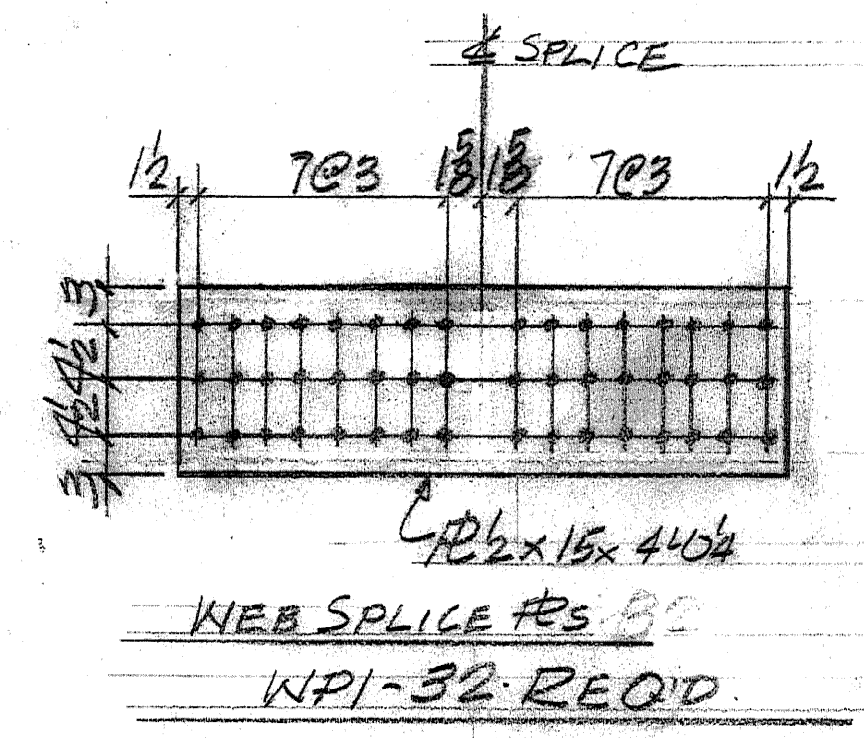
T11R-T12R-T81R-T82R-MAKE ONE EACH-AS SHOWN  
 T11L-T12L-T81L-T82L-MAKE ONE EACH-OPP. HAND.



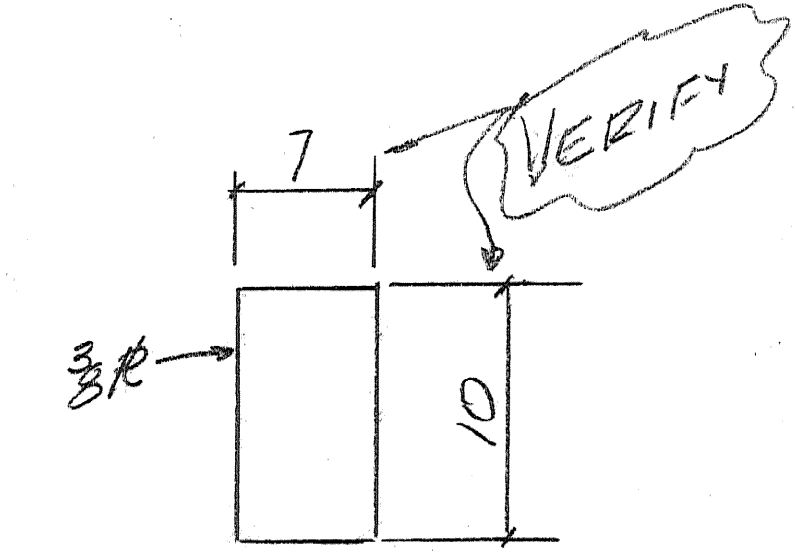
T31R-T32R-T61R-T62R-MAKE ONE EACH-AS SHOWN  
 T31L-T32L-T61L-T62L-MAKE ONE EACH-OPP. HAND.



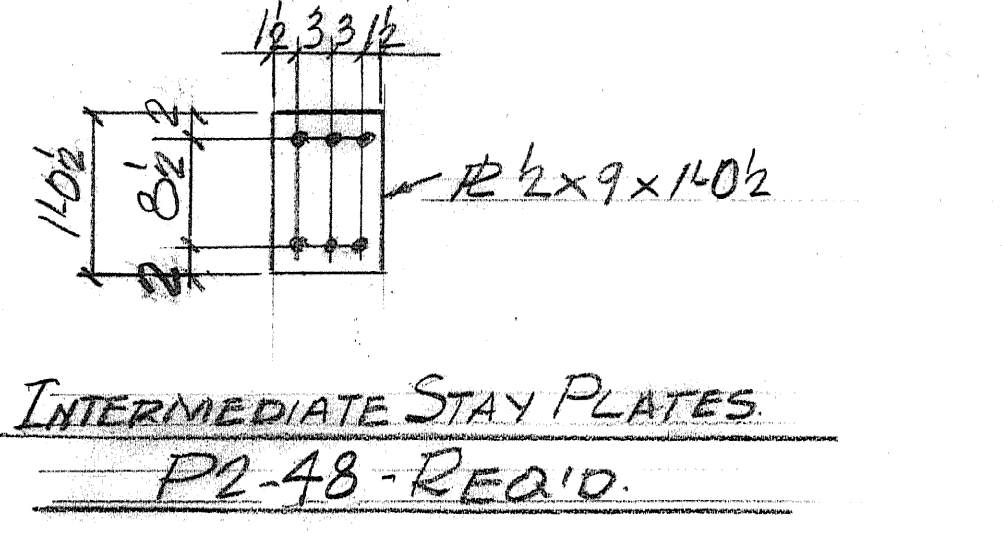
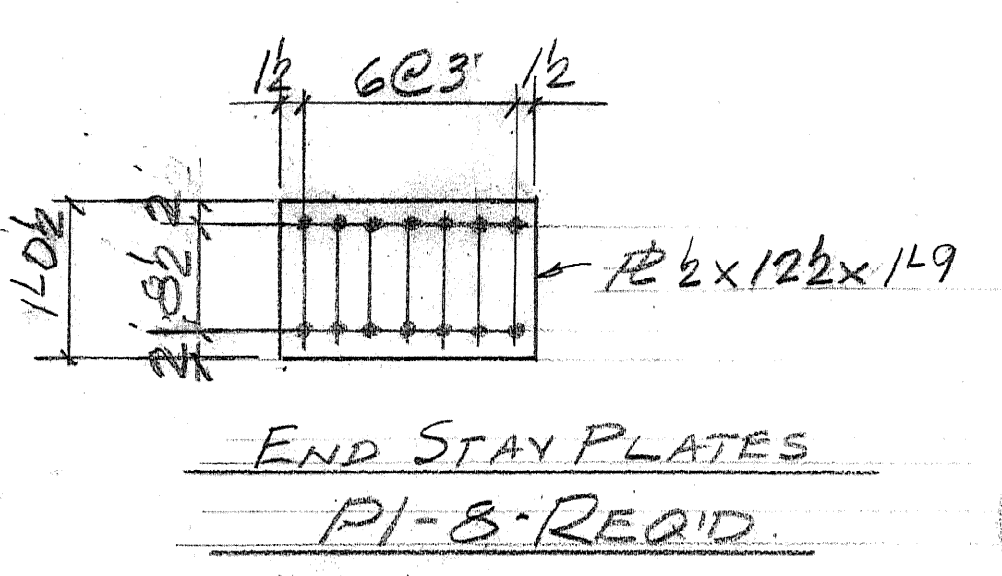
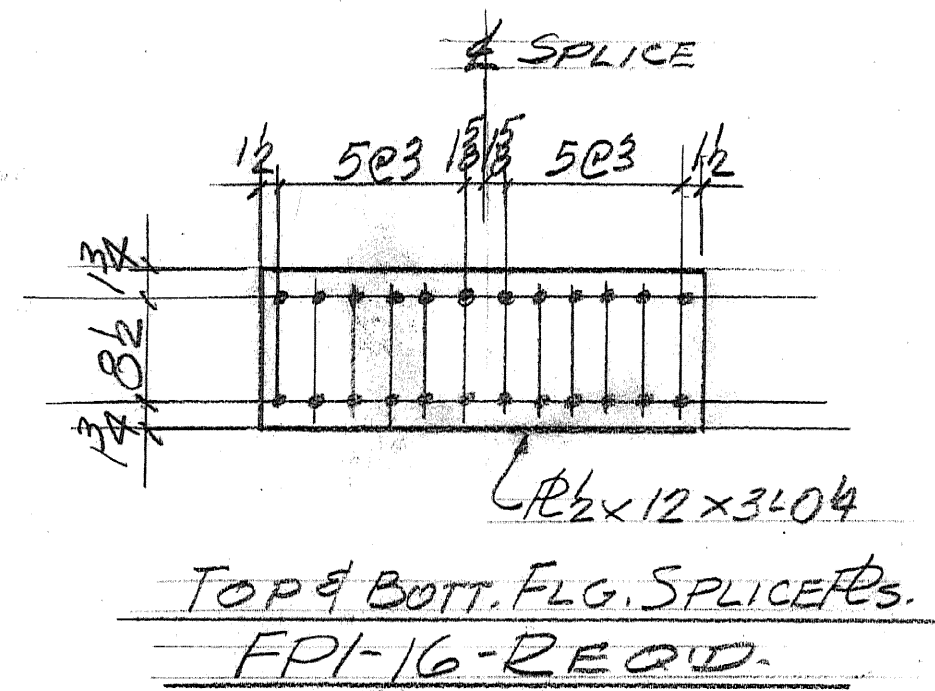
T51-2 REQ'D  
 T52-2 REQ'D



PER SUBSECTION 714.08  
 PAY ITEM 502.11



PATCHING PL. (NO PAINT)  
 PPI-8-REQ'D  
 PAY ITEM 506.60



Per Blow & Cote, Inc., all circled dimensions have been verified and they have released to fabricate using these dimensions. If all verification of existing holes for W27 and existing plates and angles can be verified prior to fabrication Casco Bay Steel Structures will shop drill. If not, Blow & Cote will field drill these holes.

SHOP DRAWINGS ARE REVIEWED UNLESS NOTED OTHERWISE

NO EXCEPTION TAKEN

REVISE AS NOTED

REVISE AS NOTED

REVISE AS NOTED

REVISE AS NOTED

REJECTED

DATE: 4/22/08

SIGNATURE: Michael Chertoff

REVIEW BY: [Signature]

REVISIONS: [Table]

ABM INFO		SHOP BILL				JOB NO. 361	DRG. NO. 51			
PAGE	LINE	NO.	DESCRIPTION	FT	IN	ASSEM. MARK	SHIPPING MARK	REMARKS	WEIGHT	
		1	MC18x45.8	25	1 1/2		T11R			
		1		25	1 1/2		T12R			
		1		25	1 1/2		T81R			
		1		25	1 1/2		T82R			
		1		25	1 1/2		T11L			
		1		25	1 1/2		T12L			
		1		25	1 1/2		T81L			
		1	MC18x45.8	25	1 1/2		T82L			
		1	MC18x58	31	2 3/4		T31R			
		1		31	2 3/4		T32R			
		1		31	2 3/4		T61R			
		1		31	2 3/4		T62R			
		1		31	2 3/4		T31L			
		1		31	2 3/4		T32L			
		1		31	2 3/4		T61L			
		1		31	2 3/4		T62L			
		2		10	9 3/4		T51			
		2	MC18x58	10	9 3/4		T52			
		32	R 1/2 x 15	4	04		WPI			
		8	R 3/8 x 15	2	0		SPI			
		16	R 1/2 x 12	3	04		FPI			
		8	R 1/2 x 12 1/2	1	9		PI			
		48	R 1/2 x 9	1	02		P2			
			FIELD BOLTS (A325-GALV.)							
		768	3/8" BOLTS	3			NEW			
		928	DO	2 1/2			NEW			
		48	3/8" BOLTS	3 1/4			NEW			
		216	DO	2 1/2			DO			
		168	DO	3			DO			
		528	DO	2 1/2			DO			
		16	1/2" ROD	1	9		AEI			
		16	1/2" HEAVY HEX NUTS			SHOP			PAY ITEM 502.11	
		16	1/2" x 3/8" R. WASH.			SHOP				
		8	R 3/8 x 7	10			PPI		PAY ITEM 506.60	
			PAY ITEM 506.50 - UNLESS NOTED							

OUT FOR APPROVAL 3/19/08

OUT FOR APPROVAL 4/17/08

ISSUED TO SHOP

FIELD & OFFICE

1 Added Stay Pls. 4-16-08

REV. REMARKS DATE DWN CHK APP Q.A. NO. DIA. LGT TYPE WASHER

PROJECT NO. BHF-0302 (3)S STATE PROJECT NO.

MATERIAL: A454TP (A1870-GR50) ELECTRODES: - HOLES: 1/8" SHOP BOLTS: -

SURFACE PREP. & PAINT:

SHERWIN WILLIAMS-COROTHANE 1 GALVAPAC

ONE PACK ZINC PRIMER 3.5 TO 4 MILS DFT

DESCRIPTION: BOTTOM CHORD ITEMS

JOB: IMPROVEMENTS BRIDGE No. 41 ON TH No. 2 RICHFORD, VT.

CUSTOMER: BLOW & COTE INC.

CASCO BAY STEEL STRUCTURES, INC.

75 SPRING HILL ROAD SACO, MAINE 04072 PHONE (207) 282-7360 FAX (207) 282-1179

JOB NO. 361 DRG. NO. 51

REV. 1