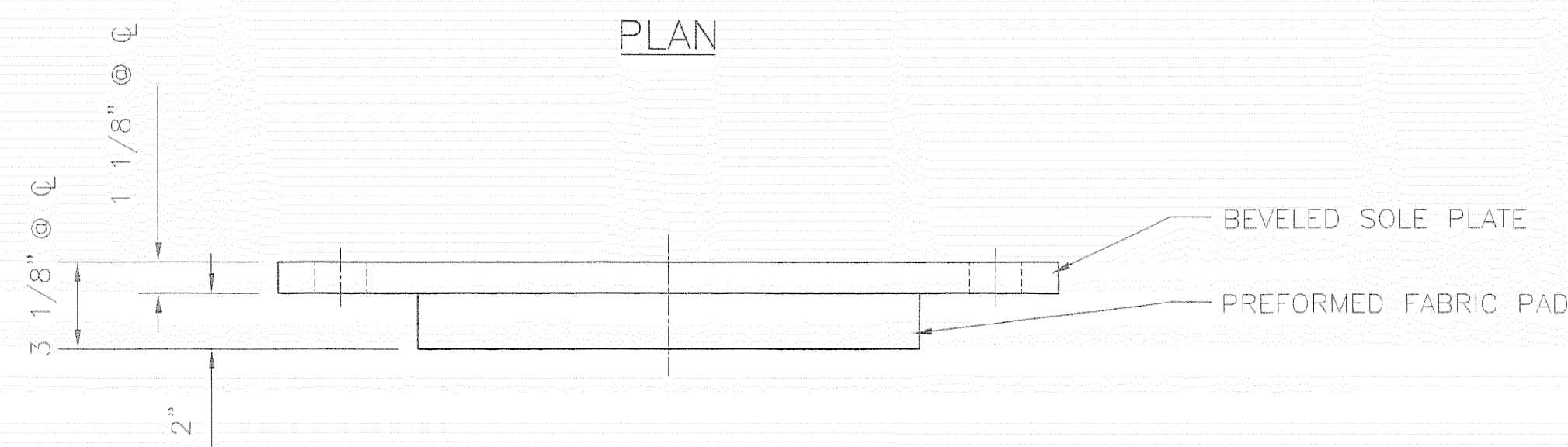


SIDE ELEVATION



FRONT ELEVATION

**COSMEC FIXED FABRIC PAD BEARING**

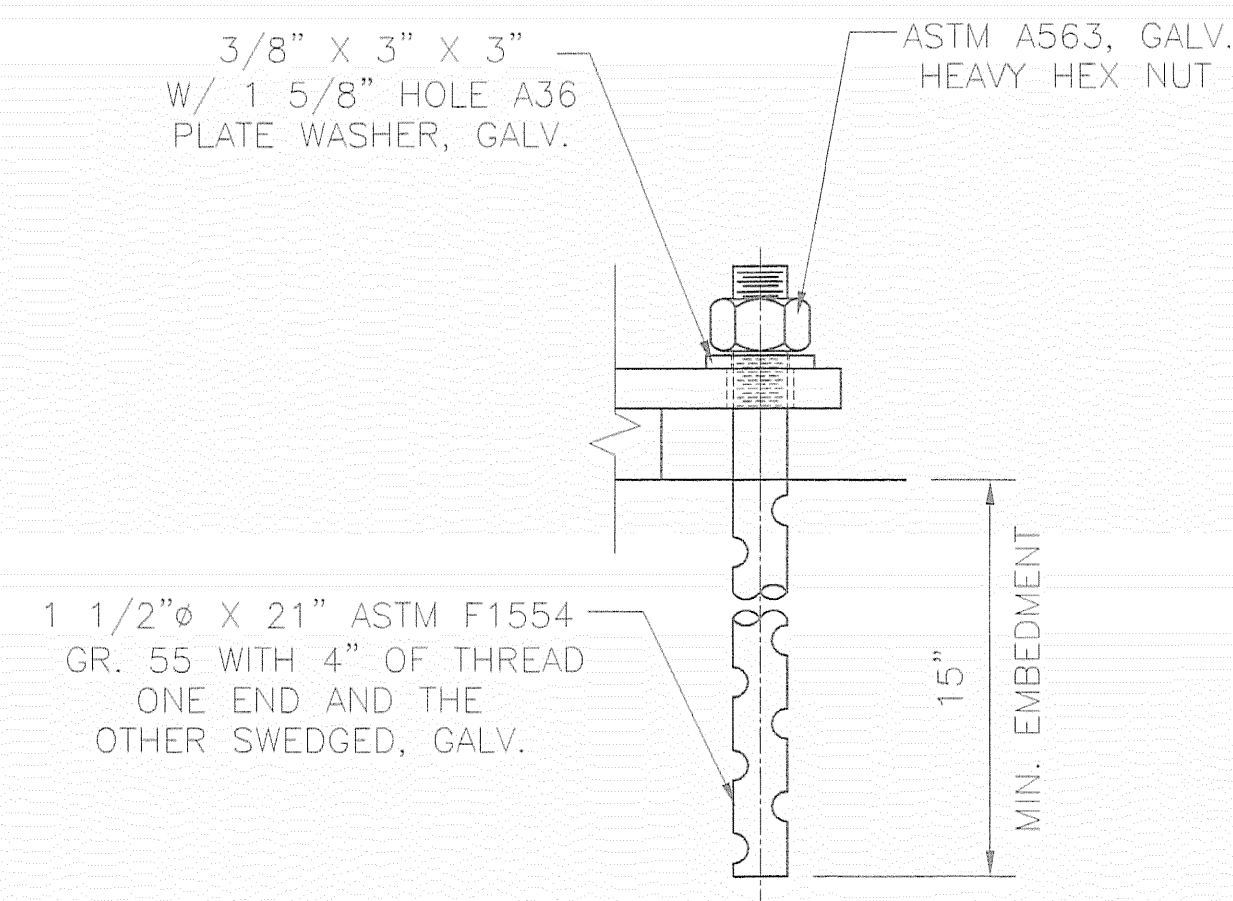
QUANTITY: 4  
 LOCATION: ABUTMENT 2, GIRDERS 1-4  
 VERTICAL LOAD CAPACITY: 150 KIPS  
 TRANSVERSE LOAD CAPACITY: 15 KIPS  
 LONGITUDINAL LOAD CAPACITY: 15 KIPS  
 MOVEMENT CAPACITY: 0"  
 ROTATION CAPACITY: .016 RADIAN

**BEARING NOTES**

1. ALL MATERIALS USED IN THE FABRICATION OF THESE BEARINGS SHALL BE MADE IN THE U.S.A.
2. BEARINGS SHALL BE STORED IN A CLEAN, DRY, LEVEL UPRIGHT POSITION.
3. LOCATION OF FABRICATION PLANT - 70 SOUTH STREET WALPOLE, MA 02081
4. COSMEC, INC. REPRESENTATIVE - MR. MATT McANDREWS (508) 668-6600

**MATERIALS**

STEEL - ASTM A709 GRADE 36, ZINC METALLIZED  
 PREFORMED FABRIC PAD - AASHTO DIV. II SPEC. 18.4.9.1  
 ANCHOR BOLTS - SEE ANCHOR BOLT DETAIL



VERMONT  
 AGENCY OF TRANSPORTATION  
 HUNTINGTON  
 PROJECT BRO 1445(29)  
 EAST STREET (T.H.#4) OVER  
 HUNTINGTON RIVER  
 BRIDGE NO. 42

**COSMEC, INC.** 70 SOUTH STREET  
 WALPOLE, MA 02081

SCALE: 3/16"=1" DRAWN BY: MRR CHECKED BY: MCM  
 DATE: 11/16/06 DATE: 12/8/06

**COSMEC FABRIC PAD BEARING**

CUSTOMER: PARENT CONSTRUCTION INC. S.O. NUMBER: 60630 DRAWING NUMBER: 5059 REV.

REV.	BY	DATE	CHK'D	DATE

*M. S. S. 12/27/06*