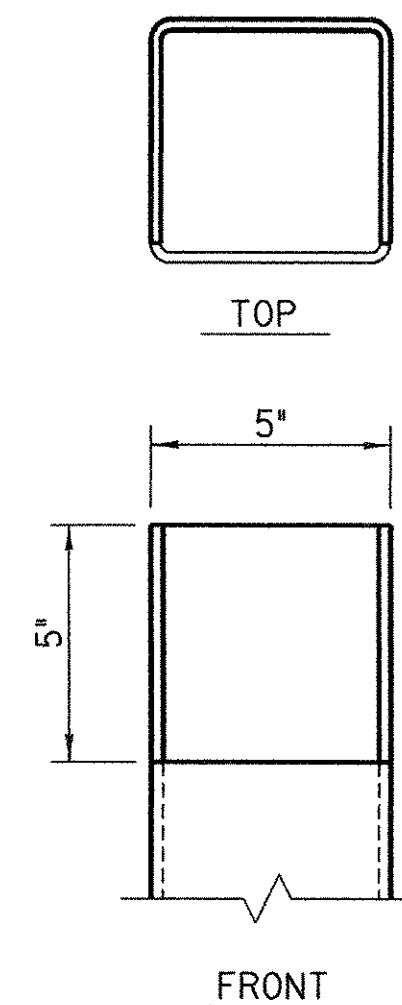


DOWNSPOUT ELEVATION

SCALE 1" = 1'-0"
 1 9 6 3 0 1 2

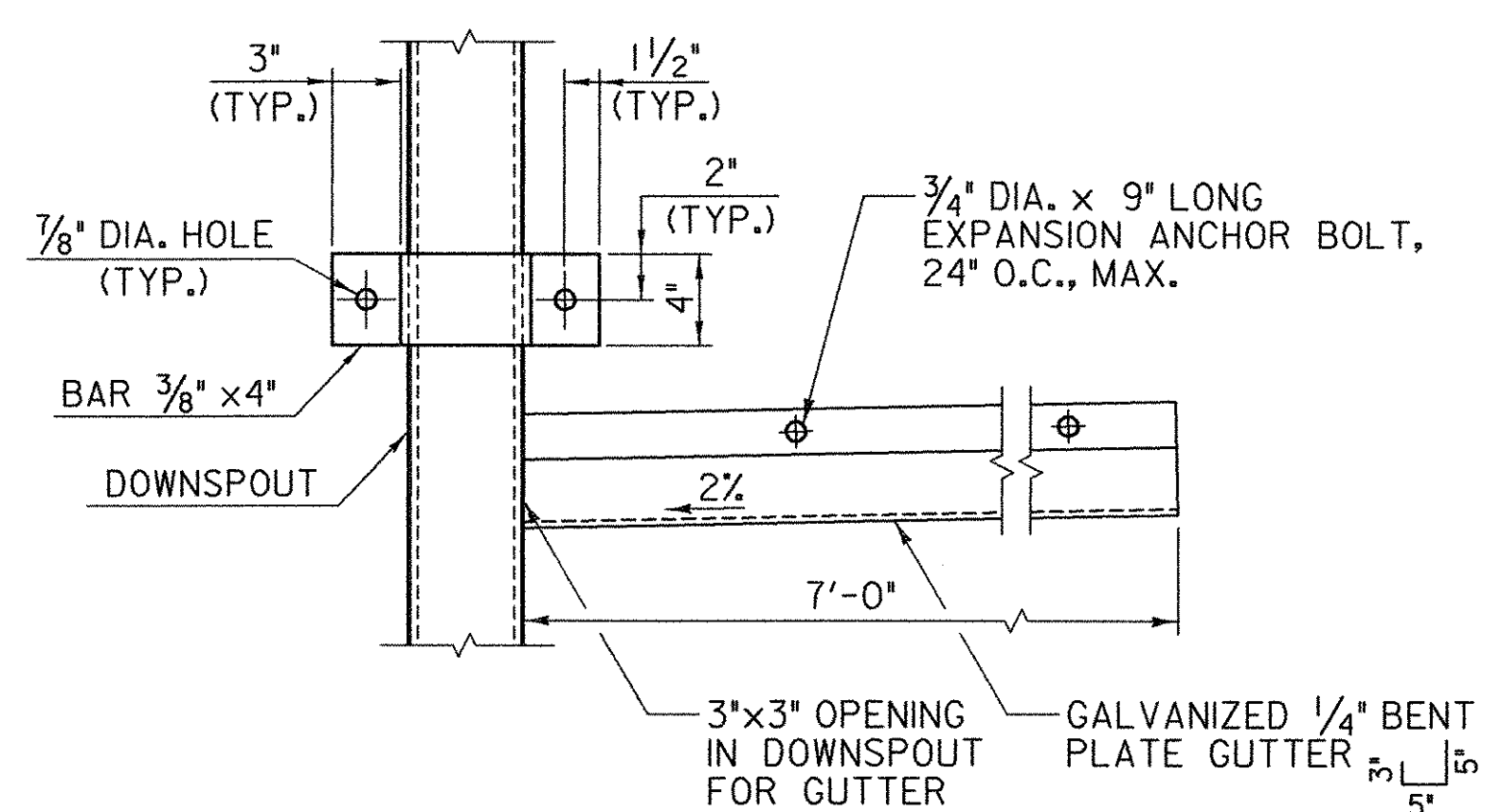
DOWNSPOUT NOTES

1. HOLLOW STRUCTURAL STEEL TUBING SHALL CONFORM TO SUBSECTION 714.II.
2. ALL PLATES, BARS, AND ANGLES SHALL CONFORM TO SUBSECTION 714.O3.
3. DOWNSPOUT SHALL BE GALVANIZED IN ACCORDANCE WITH SUBSECTION 506.I5, PART (a).
4. ALL BOLTS AND RELATED HARDWARE SHALL CONFORM TO SUBSECTION 714.O4 AND SHALL BE GALVANIZED IN ACCORDANCE WITH SUBSECTION 506.I5, PART (a).
5. ANY PLACE WHERE THE GALVANIZING HAS BEEN REMOVED FROM THE DOWNSPOUT EITHER BY CUTTING, BURNING, WELDING, PLACING, OR ANY OTHER MEANS, SHALL BE REPAIRED PER SECTION 513.
6. DOWNSPOUT AND ALL ANCHOR BOLTS WITH RELATED HARDWARE SHALL BE PAID FOR UNDER THE ITEM 506.60, "STRUCTURAL STEEL".



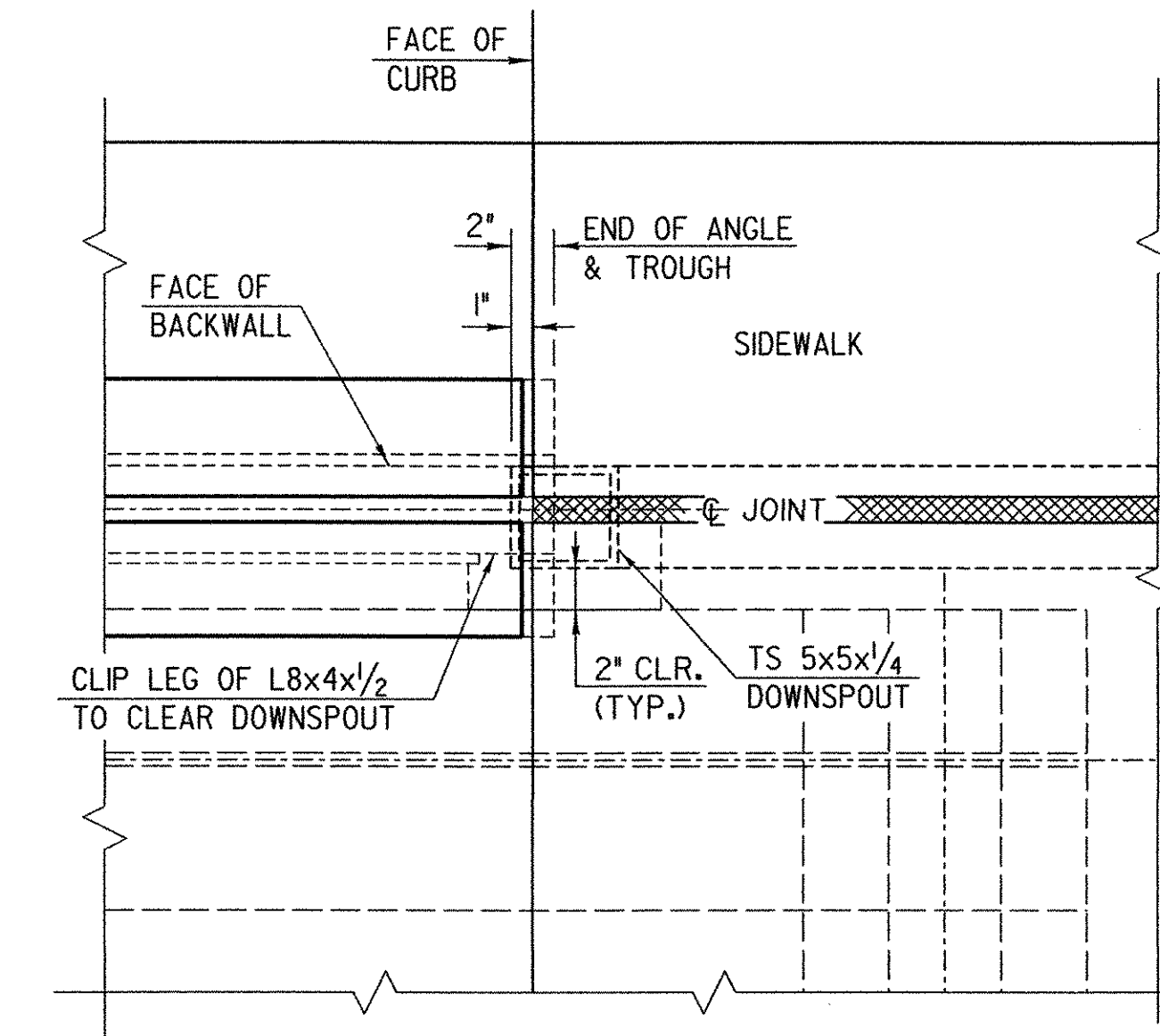
DOWNSPOUT CUTOUT FOR TROUGH

SCALE 3" = 1'-0"
 1 9 6 3 0 1



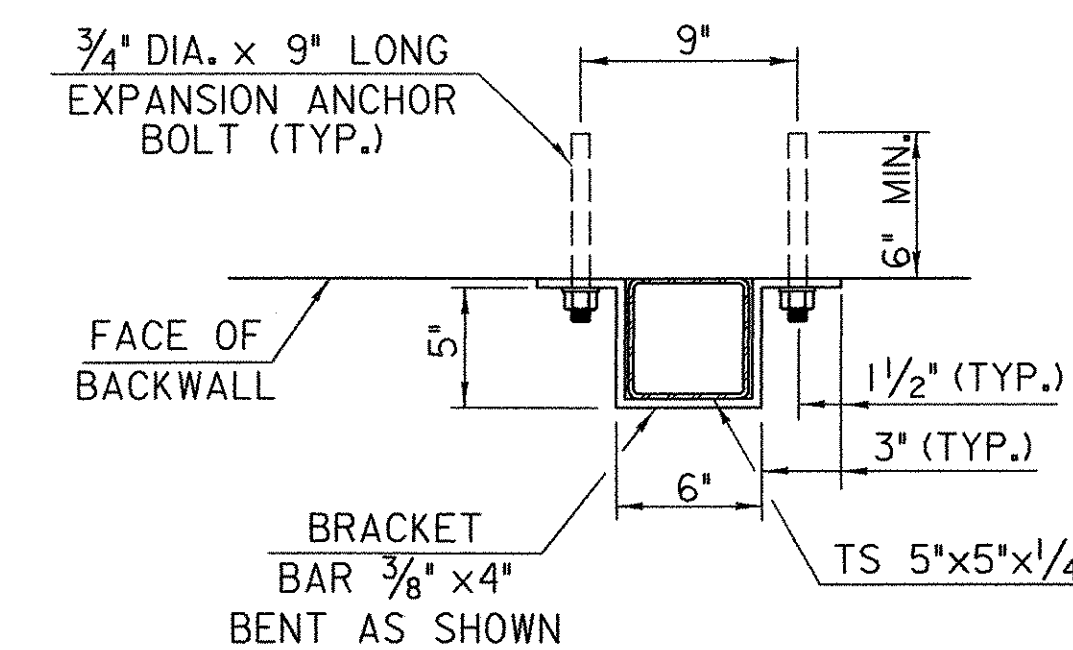
SECTION A-A

SCALE 1 1/2" = 1'-0"
 1 9 6 3 0 1



PLAN VIEW OF DOWNSPOUT

SCALE 1 1/2" = 1'-0"
 1 9 6 3 0 1



DETAILS FOR ATTACHING DOWNSPOUT TO ABUTMENT

SCALE 1 1/2" = 1'-0"
 1 9 6 3 0 1



PROJECT NAME: RICHFORD
 PROJECT NUMBER: BHF 0302 (3) S

FILE NAME: ...Design\rich-dspout.dgn PLOT DATE: 12/18/2007
 PROJECT LEADER: MJC DRAWN BY: AET
 DESIGNED BY: SEB CHECKED BY: MJC
DOWNSPOUT DETAILS SHEET 30 OF 41