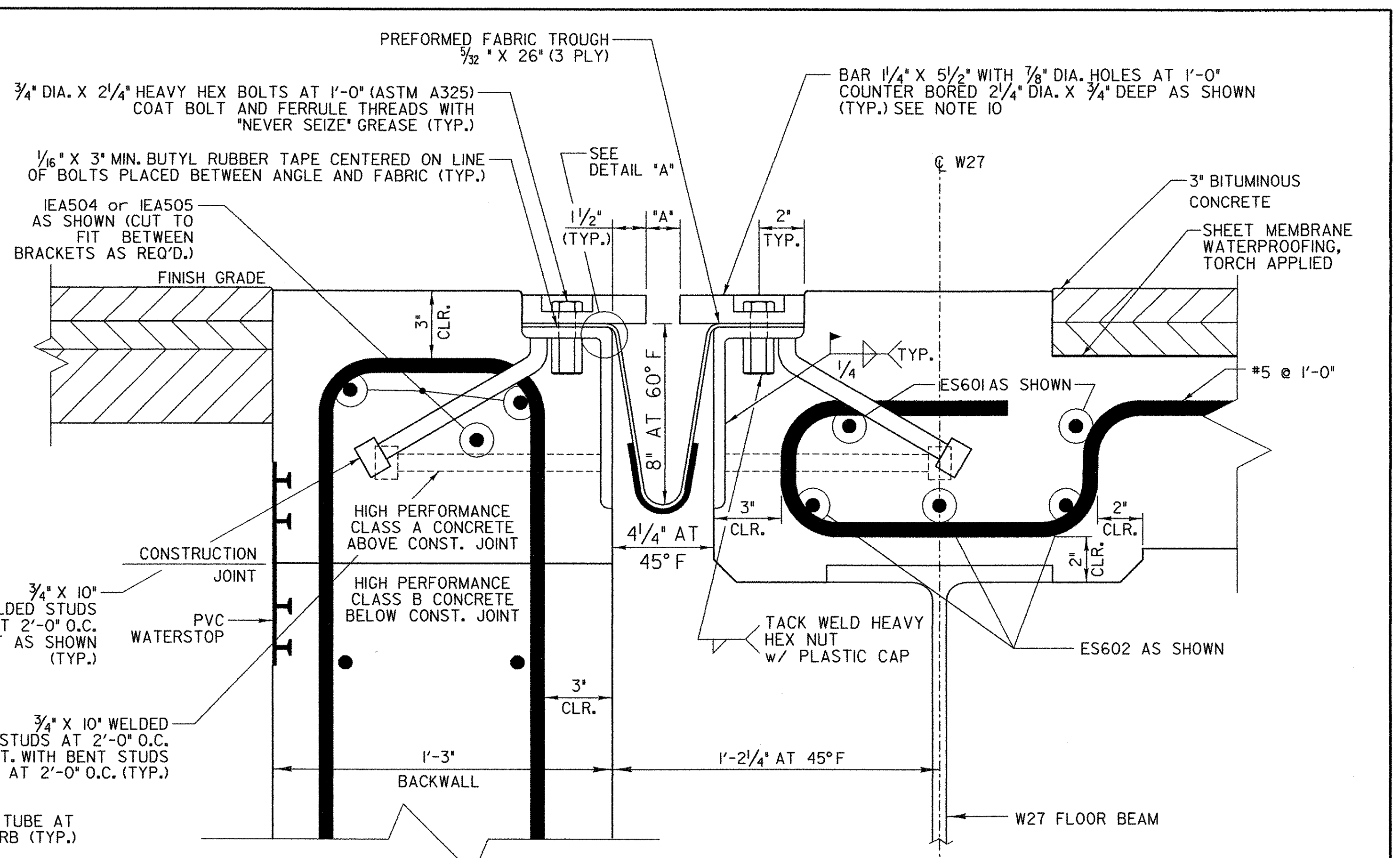
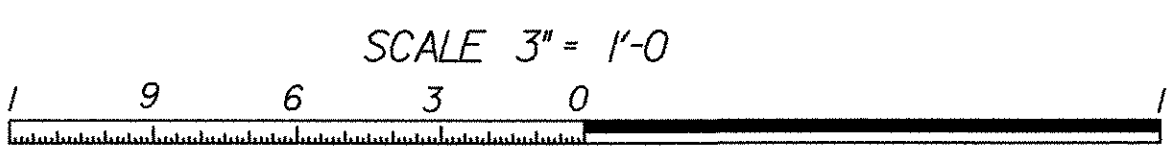
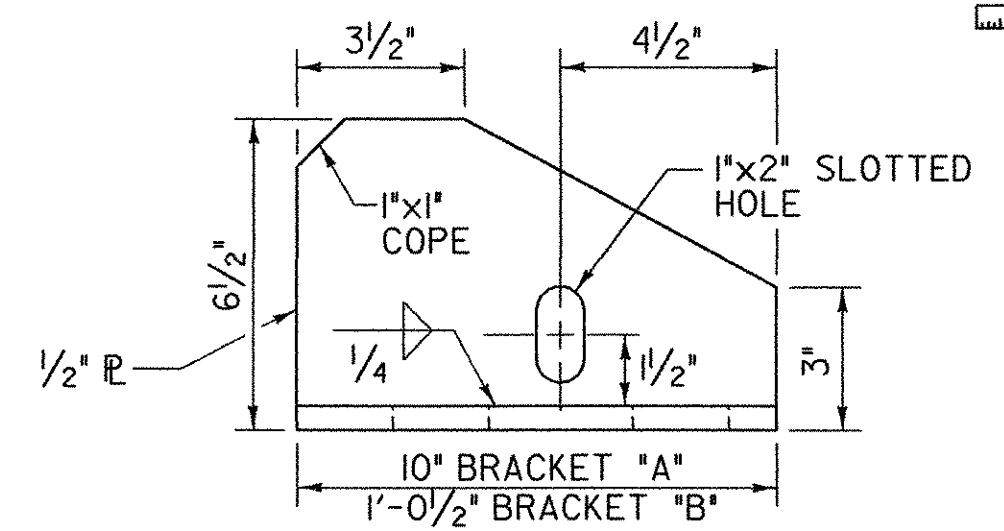
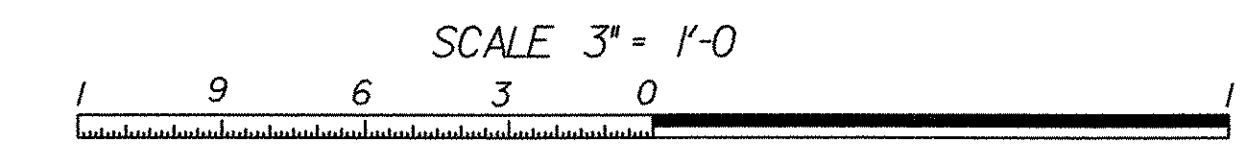


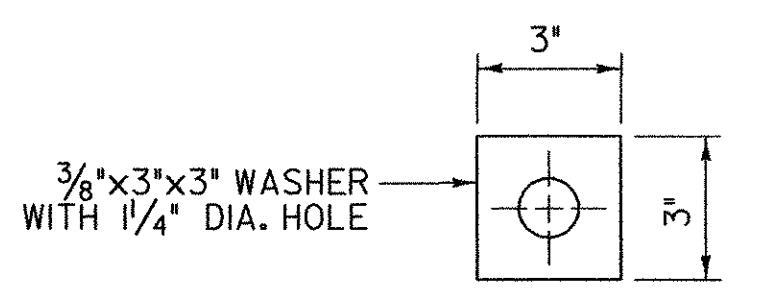
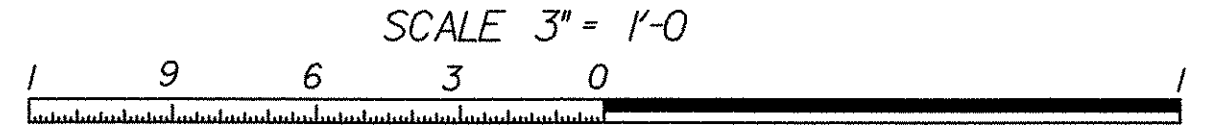
TYPICAL SECTION AT BRACKETS



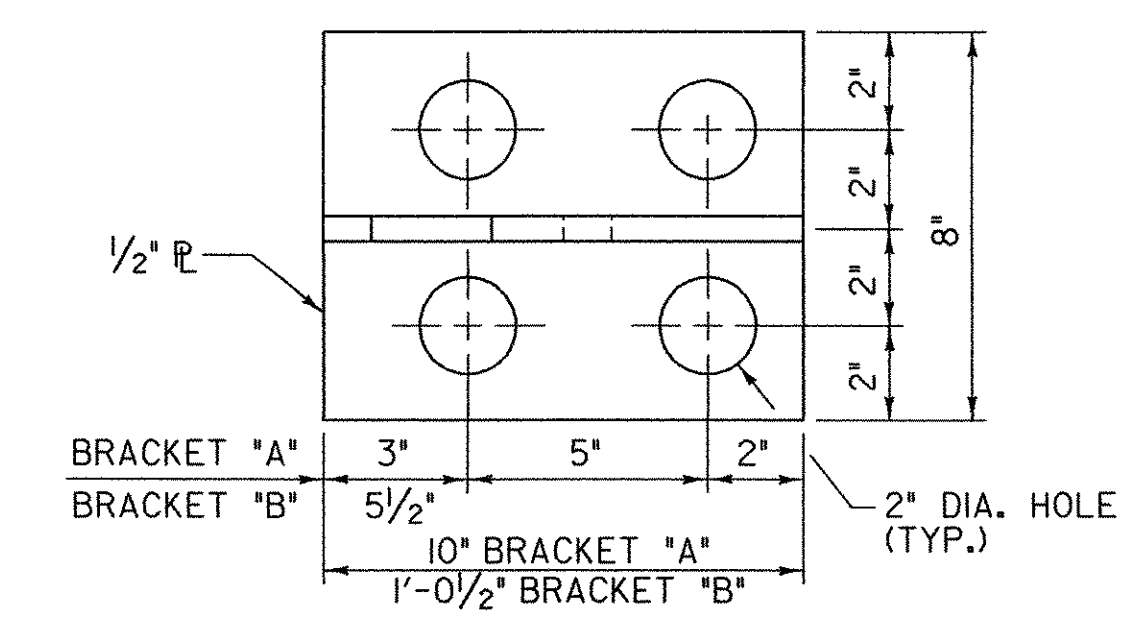
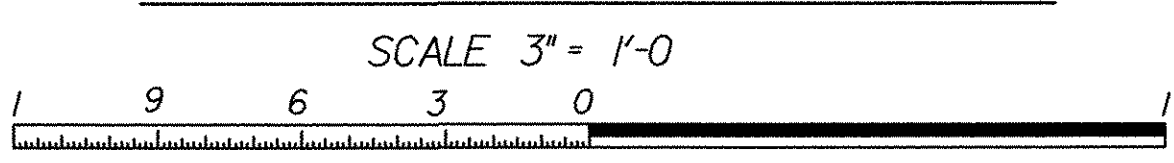
TYPICAL SECTION BETWEEN BRACKETS



BRACKET "A" AND "B" ELEVATION



WASHER FOR BRACKET



BRACKET "A" AND "B" PLAN

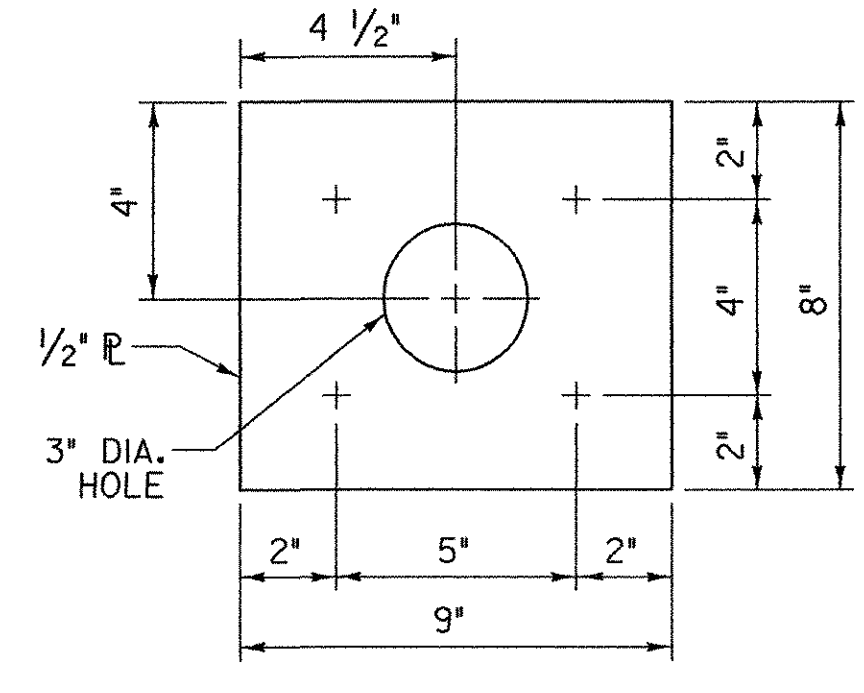
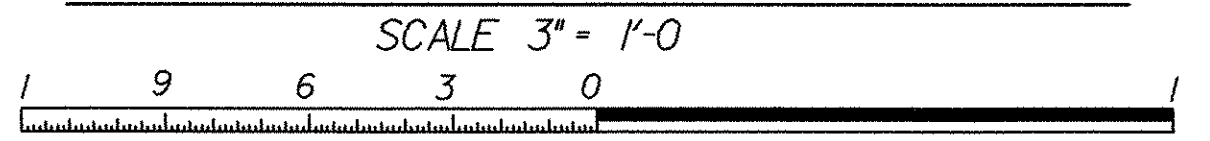
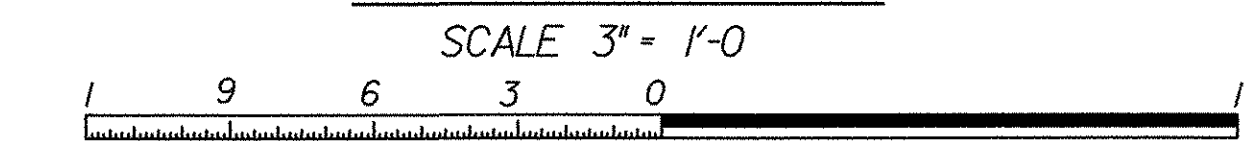


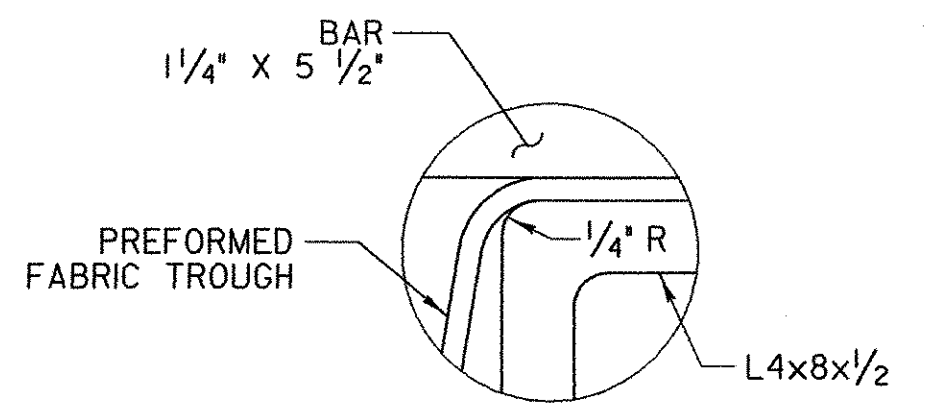
PLATE PLAN



TEMP	"A" DIST.
0° F	1 1/16"
15° F	1 1/2"
30° F	1 3/8"
45° F	1 1/4"
60° F	1 1/16"
75° F	1 5/16"
90° F	1 3/8"
105° F	5/8"
120° F	1/2"

"A" IS THE SETTING DISTANCE WHEN DEAD LOADS ARE IN PLACE.

1. DETAILS ON THIS SHEET ARE FOR ITEM 516.11, "BRIDGE EXPANSION JOINT, VERMONT".
2. THE PREFORMED FABRIC MATERIAL SHALL BE CONTINUOUS AND INSTALLED ONLY AFTER THE BRIDGE DECK IS COMPLETED. THE PREFORMED FABRIC MATERIAL SHALL CONFORM TO SUBSECTION 707.07.
3. BUTYL RUBBER TAPE SHALL CONFORM TO SUBSECTION 707.12.
4. THE FINAL FINISH OF THE EXPANSION DEVICE SHALL BE COVERED DURING THE PLACING OF BRIDGE DECK CONCRETE.
5. ALL STEEL COMPONENTS SHALL BE AASHTO M 270M/M 270 GRADE 36 GALVANIZED OR METALIZED AS PER SUBSECTION 506.15, UNLESS OTHERWISE SPECIFIED. THREADED RODS SHALL CONFORM TO ASTM A307, GRADE C. THE NUTS FOR THE THREADED RODS SHALL BE ASTM A563.
6. THE ITEM 516.11, "BRIDGE EXPANSION JOINT, VERMONT" SHALL INCLUDE THE FABRICATION AND ERECTION OF THE COMPLETE JOINT ASSEMBLY INCLUDING ALL STEEL PLATES, BRACKETS, ANGLES, WELDED STUDS OR RODS, PREFORMED FABRIC DRAIN TROUGH MATERIAL AND PLASTIC DRAIN TUBES, BUTYL RUBBER TAPE AND ANY OTHER MISCELLANEOUS MATERIAL NECESSARY TO INSTALL JOINT.
7. THE 8"x4"x1/2" ANGLES SHALL BE FURNISHED AS ONE CONTINUOUS PIECE. THE 1 1/4" X 5 1/2" BARS EACH SIDE OF THE JOINT SHALL BE PROVIDED IN FOUR EQUAL LENGTHS.
8. COAT CONCRETE CONTACT SURFACES WITH EPOXY BONDING COMPOUND MEETING THE REQUIREMENTS OF SUBSECTION 719.02. PAYMENT SHALL BE INCLUDED IN THE UNIT PRICE BID FOR ITEM 516.11 "BRIDGE EXPANSION JOINT, VERMONT".
9. A 1" DIAMETER PLASTIC DRAIN TUBE (PER STD. SPEC. 740.01) SHALL BE INSTALLED AS SHOWN AT THE FACE OF CURB. THE UPPER END IS TO BE PLUGGED WITH STEEL WOOL AND THE LOWER END IS TO EXTEND BELOW THE BOTTOM OF THE W27 BEAM. THE DRAIN TUBES SHALL BE FASTENED TO THE BEAMS AND STRINGERS USING A METHOD APPROVED BY THE ENGINEER.
10. FILL COUNTER BORED HOLES WITH HOT POURED JOINT SEALER AFTER BOLT INSTALLATION. PAYMENT FOR THE WORK SHALL BE INCIDENTAL TO ITEM 516.11.
11. PAYMENT FOR WATERSTOP SHALL BE INCIDENTAL TO CONTRACT ITEM 501.34.
12. A DRIP BEAD OF 1/4" X 7" STRIP OF PREFORMED MATERIAL SHALL BE CEMENTED TO THE BOTTOM OF THE FABRIC TROUGH USING AN ADHESIVE APPROVED BY THE MANUFACTURER. THE DRIP BEAD SHALL BE APPLIED 1" FROM THE DOWNSPOUT END OF THE TROUGH.
13. FABRIC TROUGH SHALL BE THOROUGHLY CLEANED AND FLUSHED AFTER PAVING OPERATION.
14. THE EXPANSION JOINT SHALL BE SHOP ASSEMBLED AND SHIPPED AS ONE UNIT.



DETAIL "A"
NOT TO SCALE



PROJECT NAME:	RICHFORD
PROJECT NUMBER:	BHF 0302 (3) S
FILE NAME:	...Design\Rich-expj+2.dgn
PROJECT LEADER:	MJC
DESIGNED BY:	SEB
EXPANSION JOINT DETAILS	
PLOT DATE:	12/18/2007
DRAWN BY:	SEB
CHECKED BY:	MJC
SHEET	29 OF 41