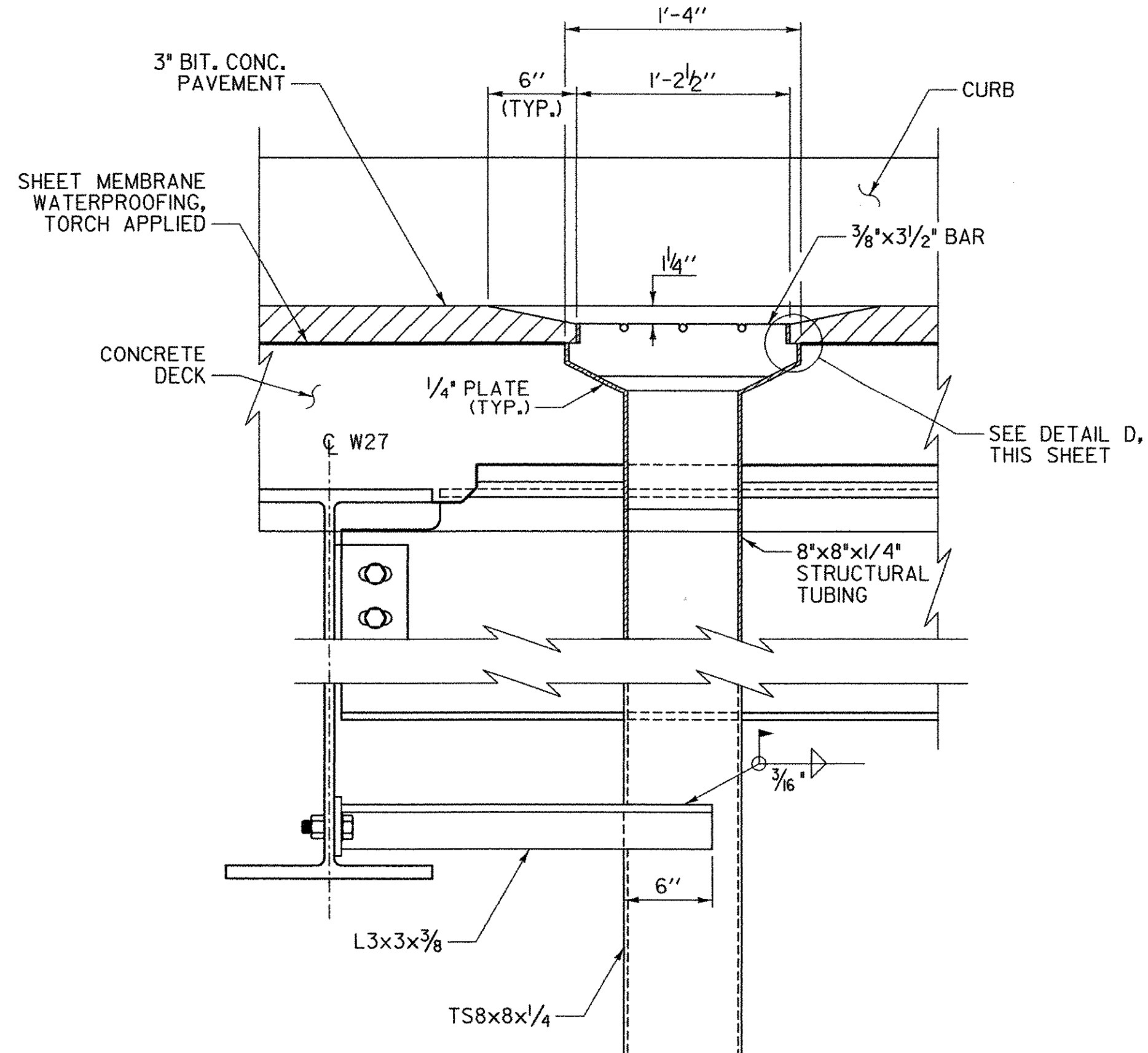


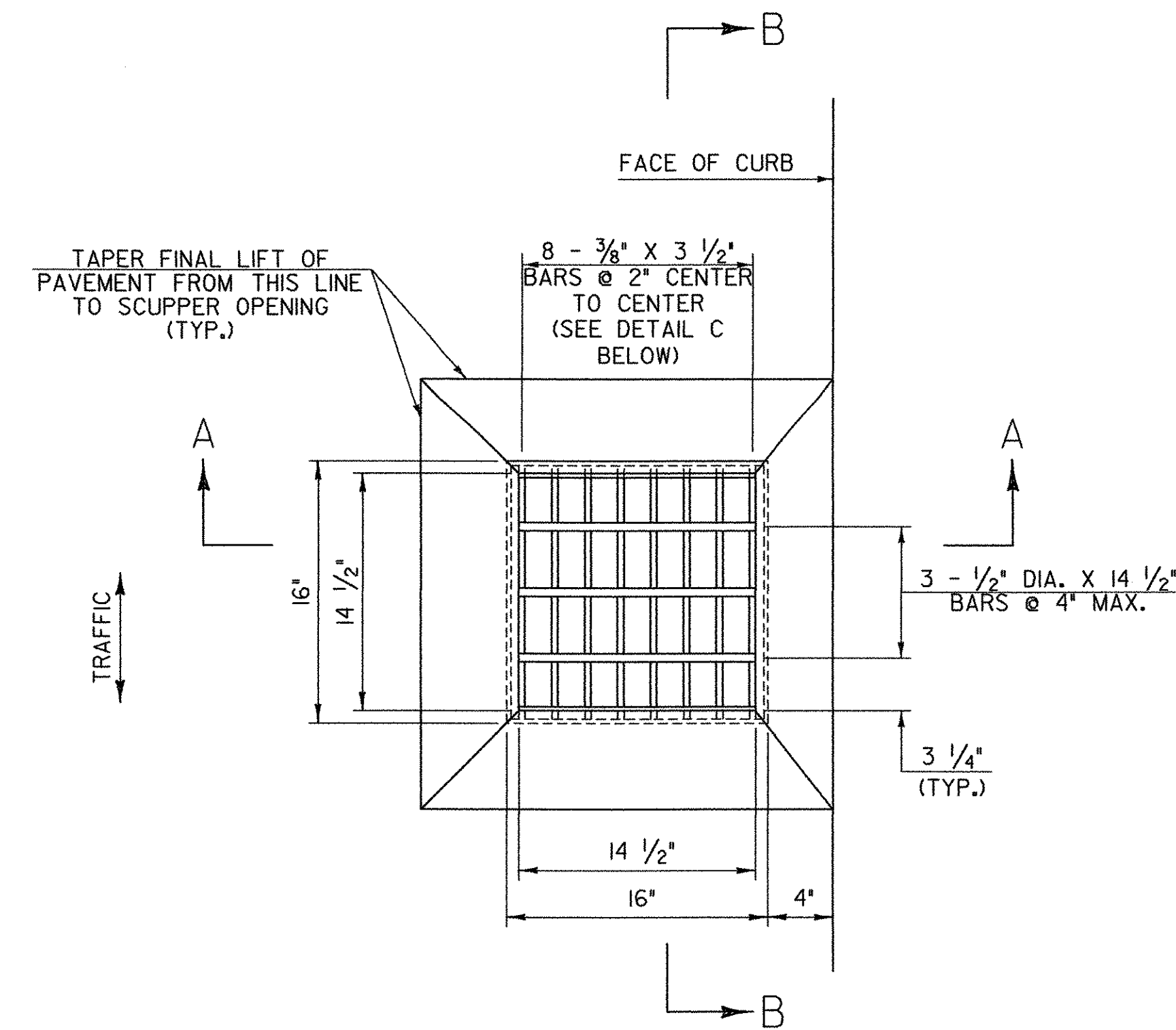
SECTION A-A

SCALE 1 1/2" = 1'-0"
 1 9 6 3 0 1



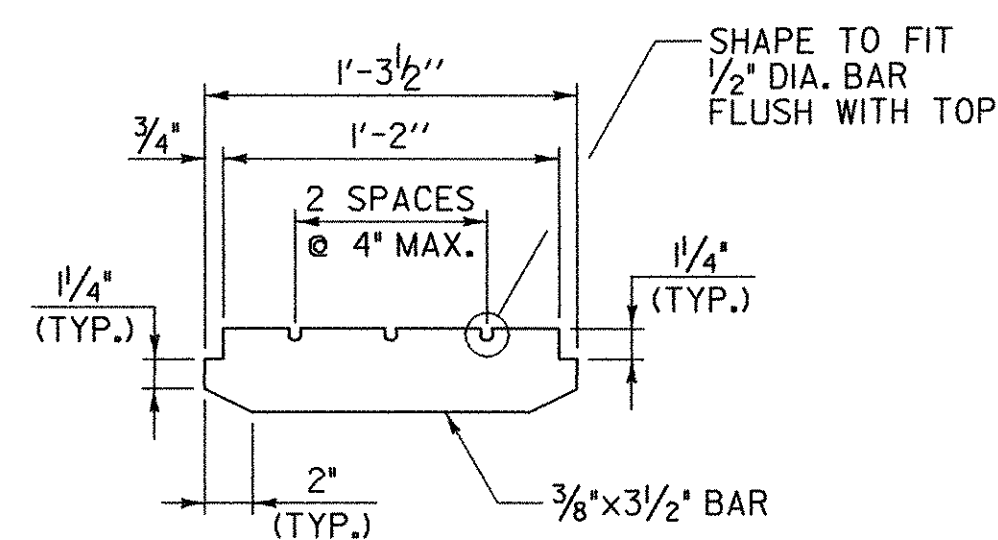
SECTION B-B

SCALE 1 1/2" = 1'-0"
 1 9 6 3 0 1



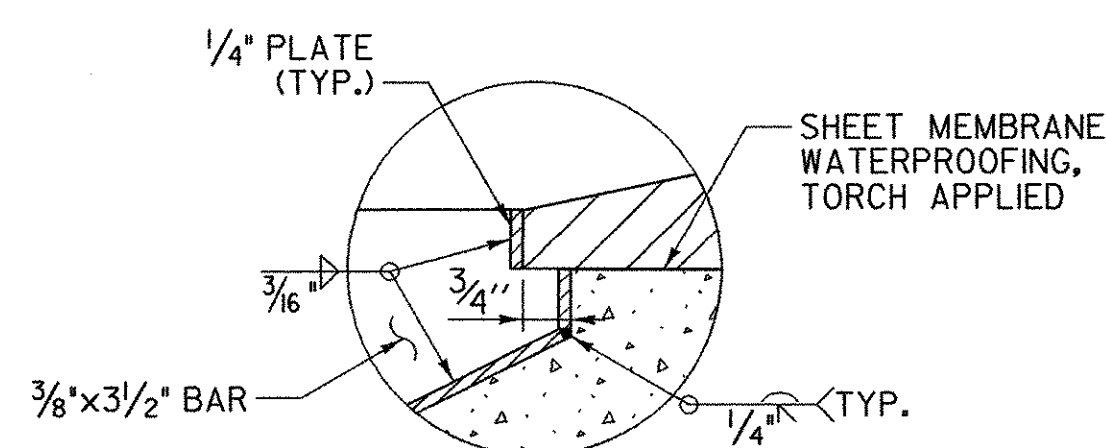
SCUPPER PLAN

SCALE 1 1/2" = 1'-0"
 1 9 6 3 0 1



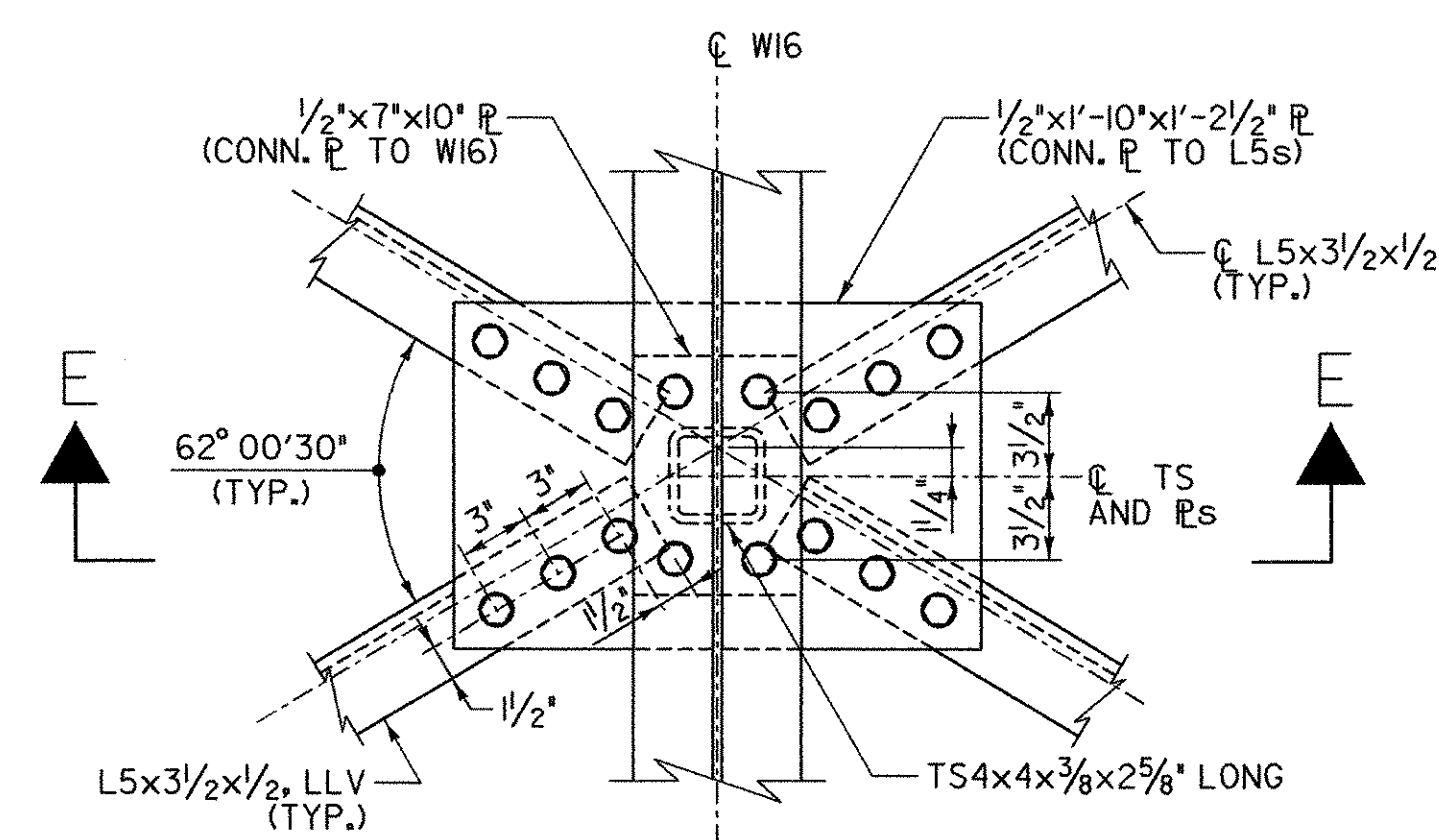
DETAIL C

SCALE 1 1/2" = 1'-0"
 1 9 6 3 0 1



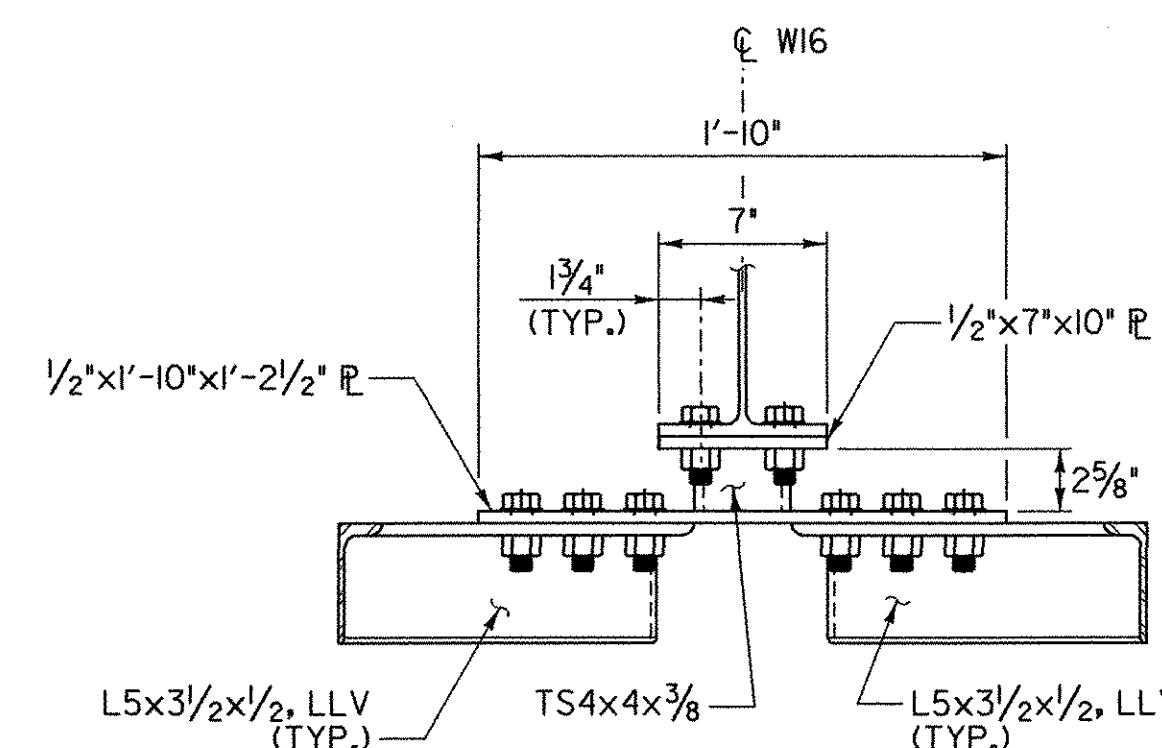
DETAIL D

NOT TO SCALE



DIAGONAL CONNECTION DETAIL AT CENTER STRINGER

SCALE 1 1/2" = 1'-0"
 1 9 6 3 0 1



SECTION E-E

SCUPPER NOTES

- HOLLOW STRUCTURAL STEEL TUBING SHALL CONFORM TO SUBSECTION 714.11.
- ALL PLATES, BARS, AND ANGLES SHALL CONFORM TO SUBSECTION 714.03.
- ALL SCUPPERS, INCLUDING SUPPORT ANGLES, SHALL BE GALVANIZED AFTER FABRICATION IN ACCORDANCE WITH SUBSECTION 506.15, PART (d).
- THE TOP SURFACE OF THE SCUPPER SHALL BE SLOPED TO MATCH ROADWAY SLOPE AND GRADE.
- ANY PLACE WHERE THE GALVANIZING HAS BEEN REMOVED FROM THE SCUPPER EITHER BY CUTTING, BURNING, WELDING, PLACING, OR ANY OTHER MEANS, SHALL BE REPAIRED PER SECTION 513.
- SCUPPERS SHALL BE PAID FOR UNDER ITEM 506.60, "STRUCTURAL STEEL"



PROJECT NAME: RICHFORD
 PROJECT NUMBER: BHF 0302 (3) S
 FILE NAME: ...Design\Rich-scupper.dgn
 PROJECT LEADER: MJC
 DESIGNED BY: SEB
 SCUPPER AND MISC. DETAILS

PLOT DATE: 12/18/2007
 DRAWN BY: TEK
 CHECKED BY: MJC
 SHEET 27 OF 41