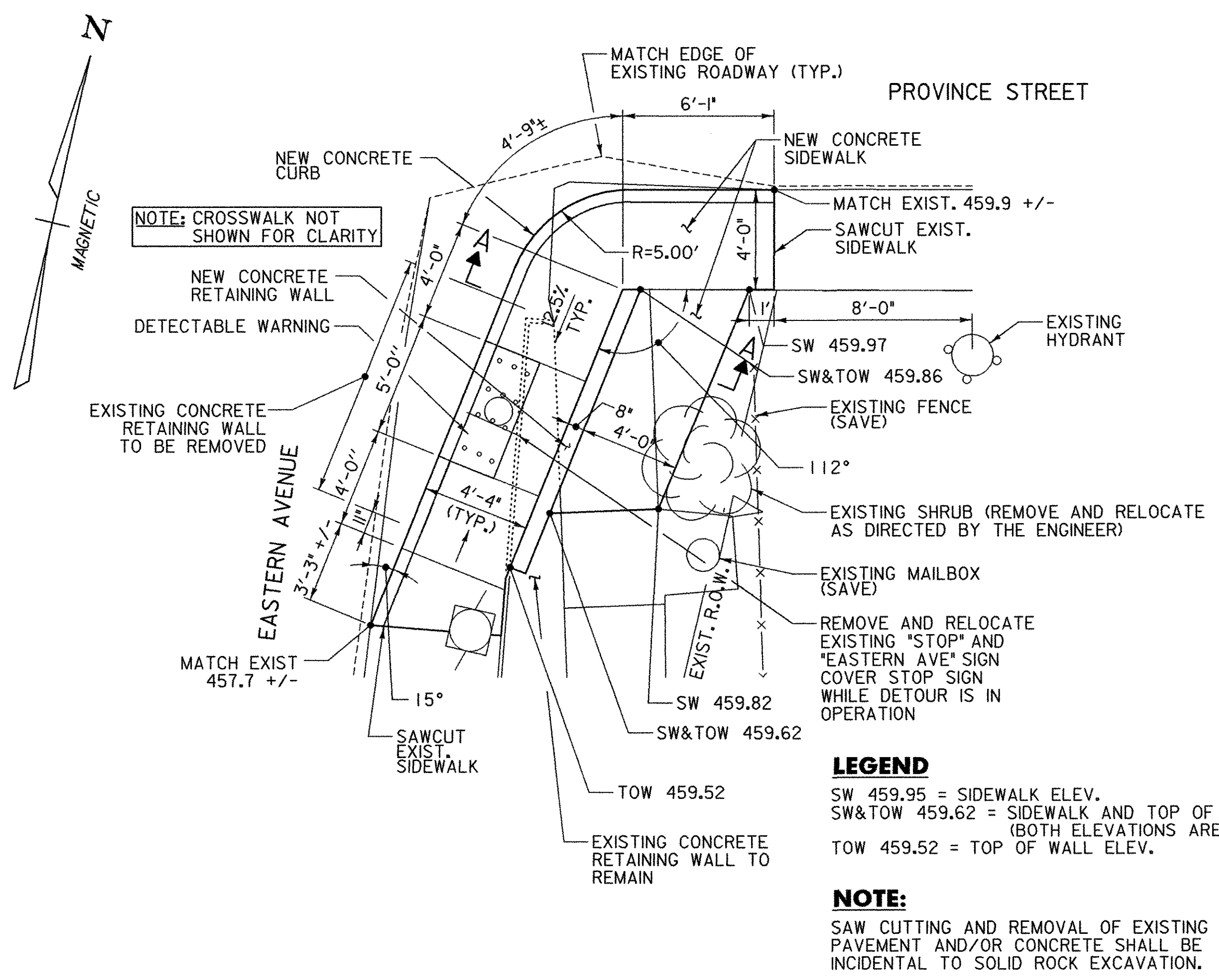


DURABLE CROSSWALK MARKING 35 LF (SEE DETAIL ON SHEET 36)	REMOVING SIGNS 2 EA	ERECTING SALVAGED SIGNS 2 EA	SETTING SALVAGED POSTS 1EA
TRANSPLANTING SHRUBS (2") 1EA	SOLID ROCK EXCAVATION 3 CY	DETECTABLE WARNING SURFACE 10 SF	SUBBASE OF GRAVEL 11 CY
PORTLAND CEMENT CONCRETE SIDEWALK, 5 INCH 18 SY	CONCRETE, HIGH PERFORMANCE CLASS B 1 CY	COMMON EXCAVATION 12 CY	CAST-IN-PLACE CONCRETE CURB, TYPE B 28 LF

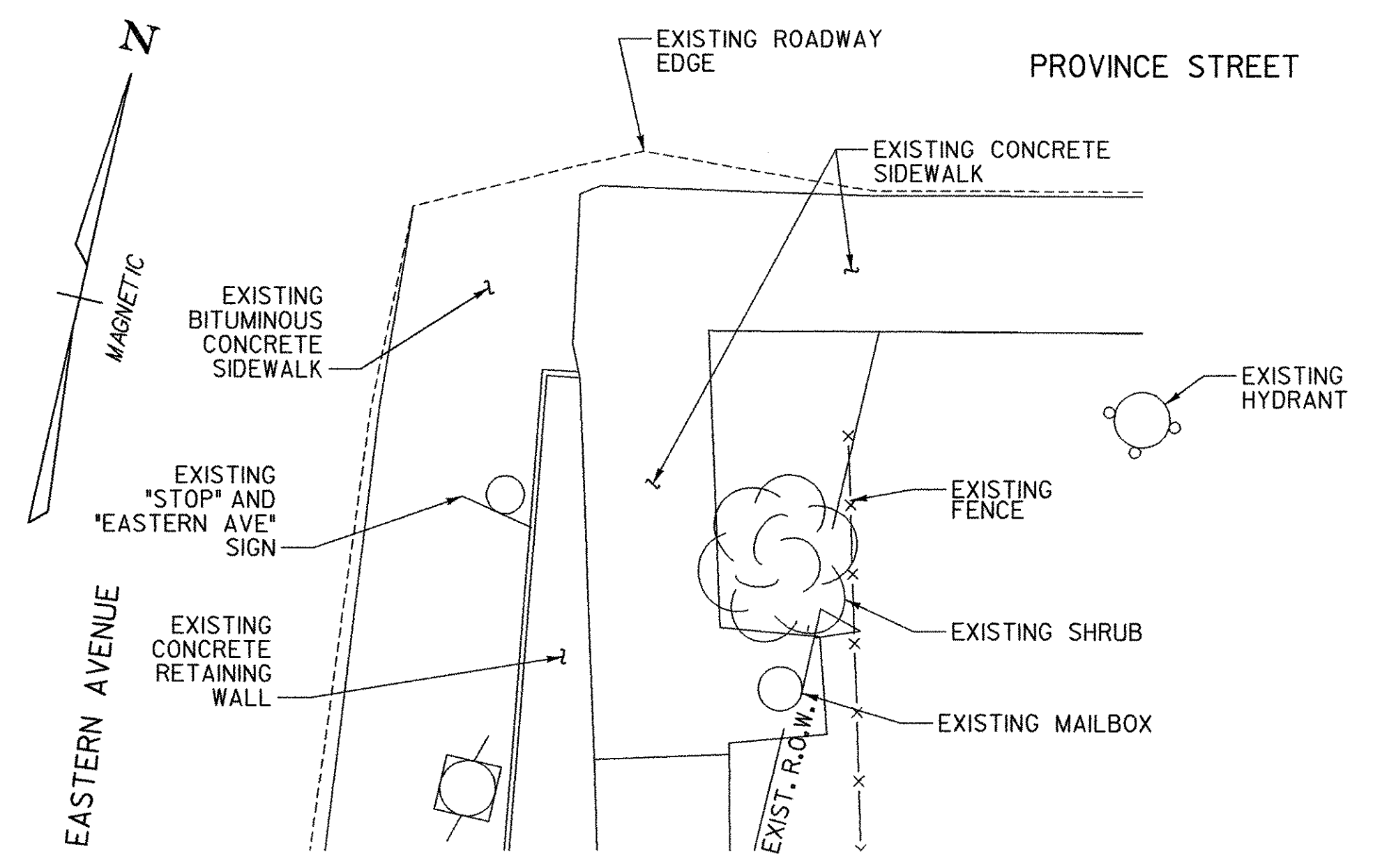


**RELOCATED SIDEWALK PLAN AT THE INTERSECTION OF EASTERN AVENUE AND PROVINCE STREET**

SCALE 1/4" = 1'-0"  
1 0 2 4 6

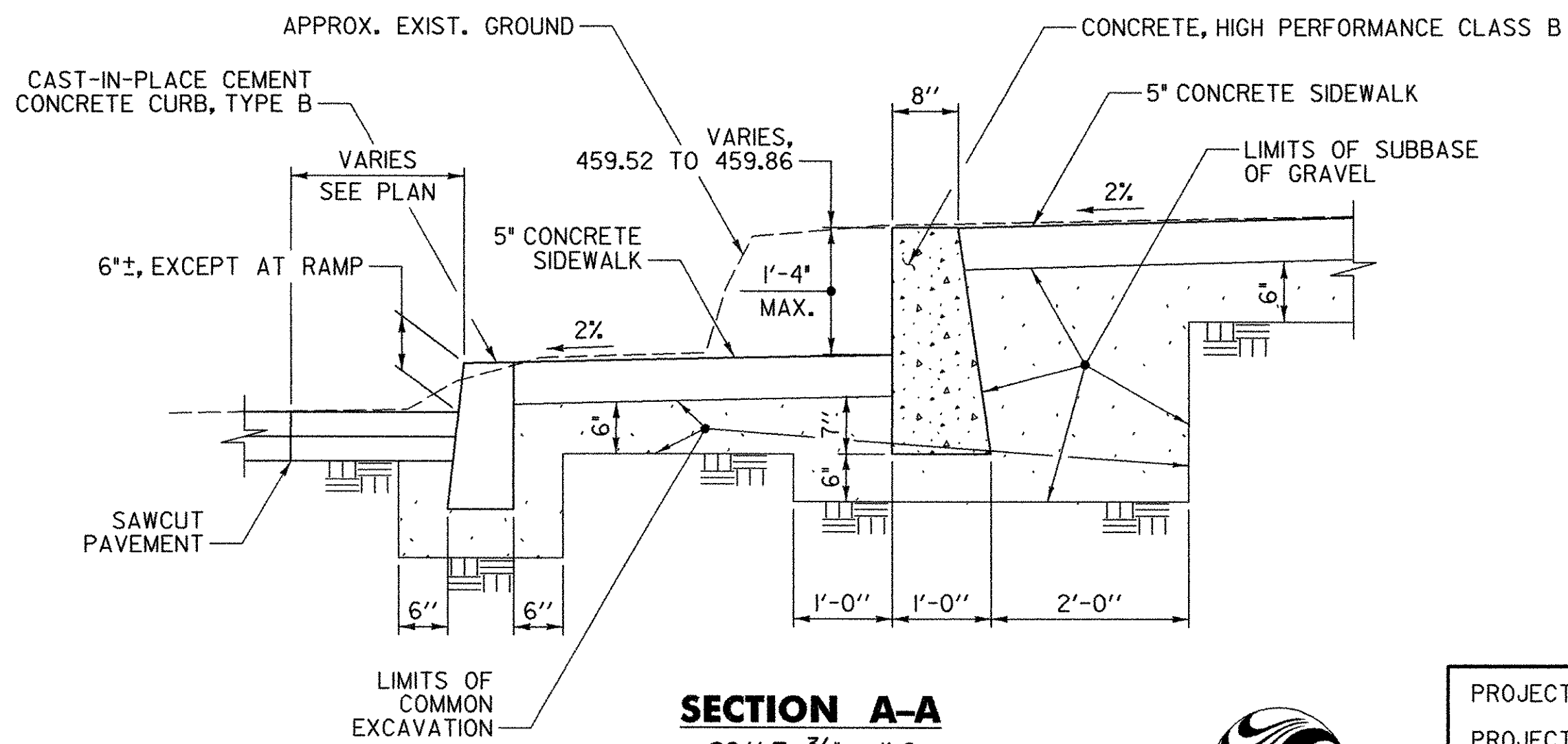
**LEGEND**  
SW 459.95 = SIDEWALK ELEV.  
SW&TOW 459.62 = SIDEWALK AND TOP OF WALL ELEV. (BOTH ELEVATIONS ARE THE SAME)  
TOW 459.52 = TOP OF WALL ELEV.

**NOTE:**  
SAW CUTTING AND REMOVAL OF EXISTING PAVEMENT AND/OR CONCRETE SHALL BE INCIDENTAL TO SOLID ROCK EXCAVATION.



**EXISTING SIDEWALK PLAN AT THE INTERSECTION OF EASTERN AVENUE AND PROVINCE STREET**

SCALE 1/4" = 1'-0"  
1 0 2 4 6



**SECTION A-A**  
SCALE 3/4" = 1'-0"  
1 0 2



PROJECT NAME: RICHFORD	PLOT DATE: 12/18/2007
PROJECT NUMBER: BHF 0302 (3) S	DRAWN BY: SEB
FILE NAME: ...Design\Rich-sdwk mod.dgn	CHECKED BY: MJC
PROJECT LEADER: MJC	SHEET 18 OF 41
DESIGNED BY: SEB	
<b>SIDEWALK MODIFICATIONS</b>	