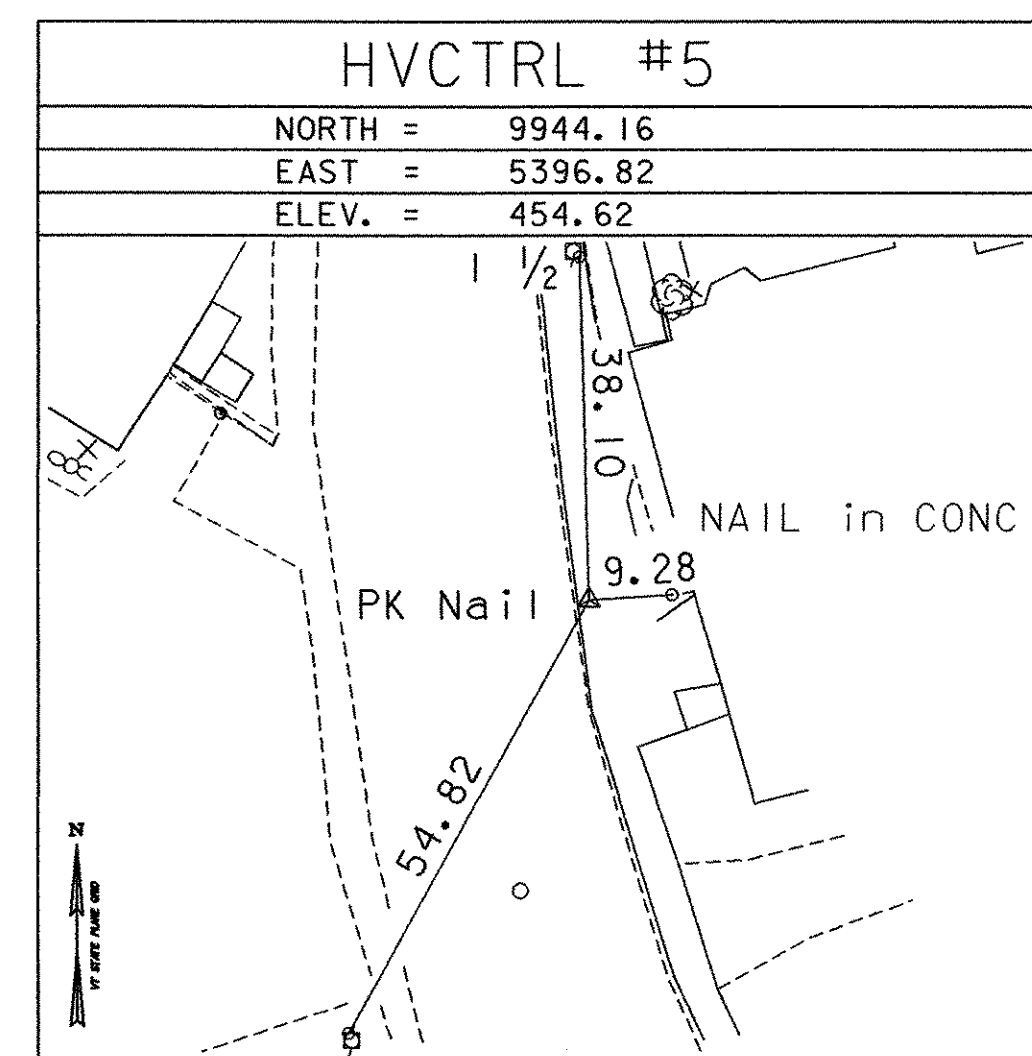
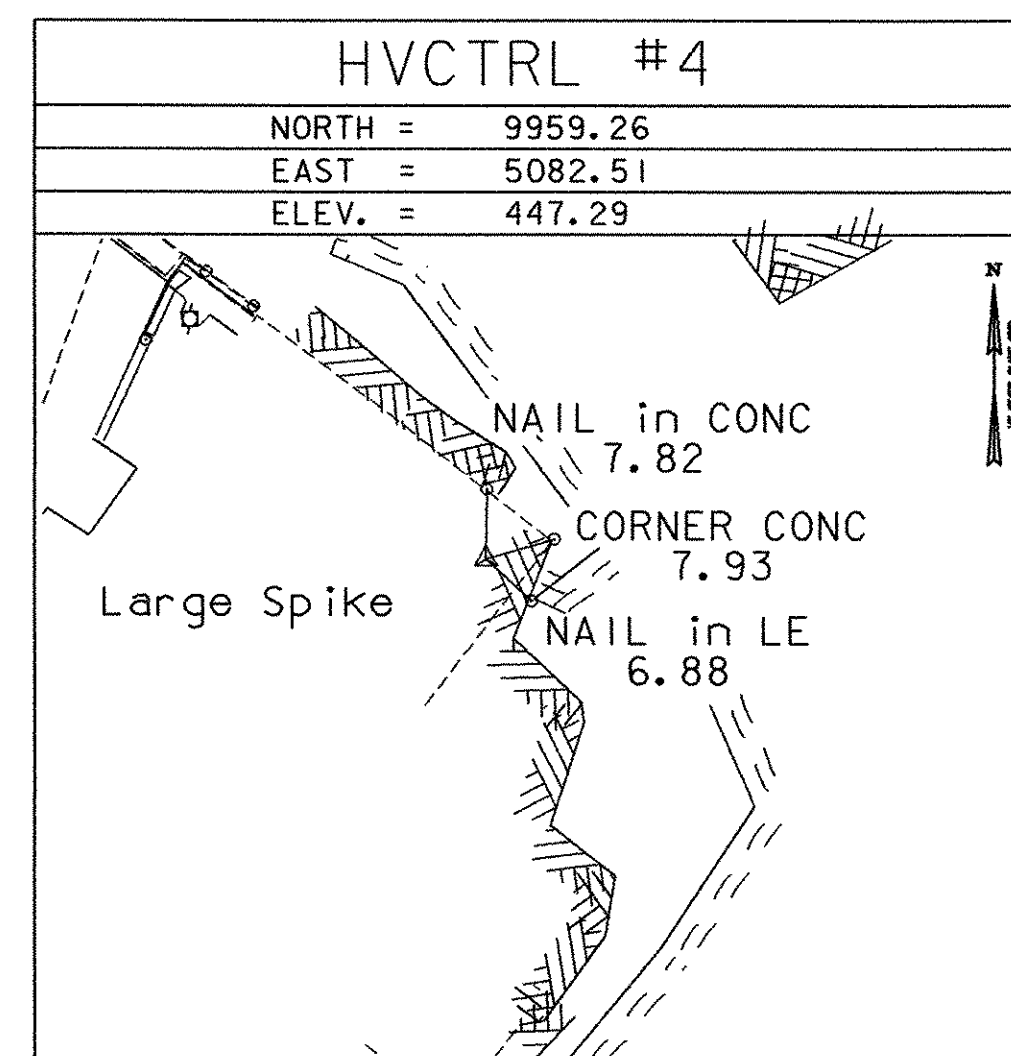
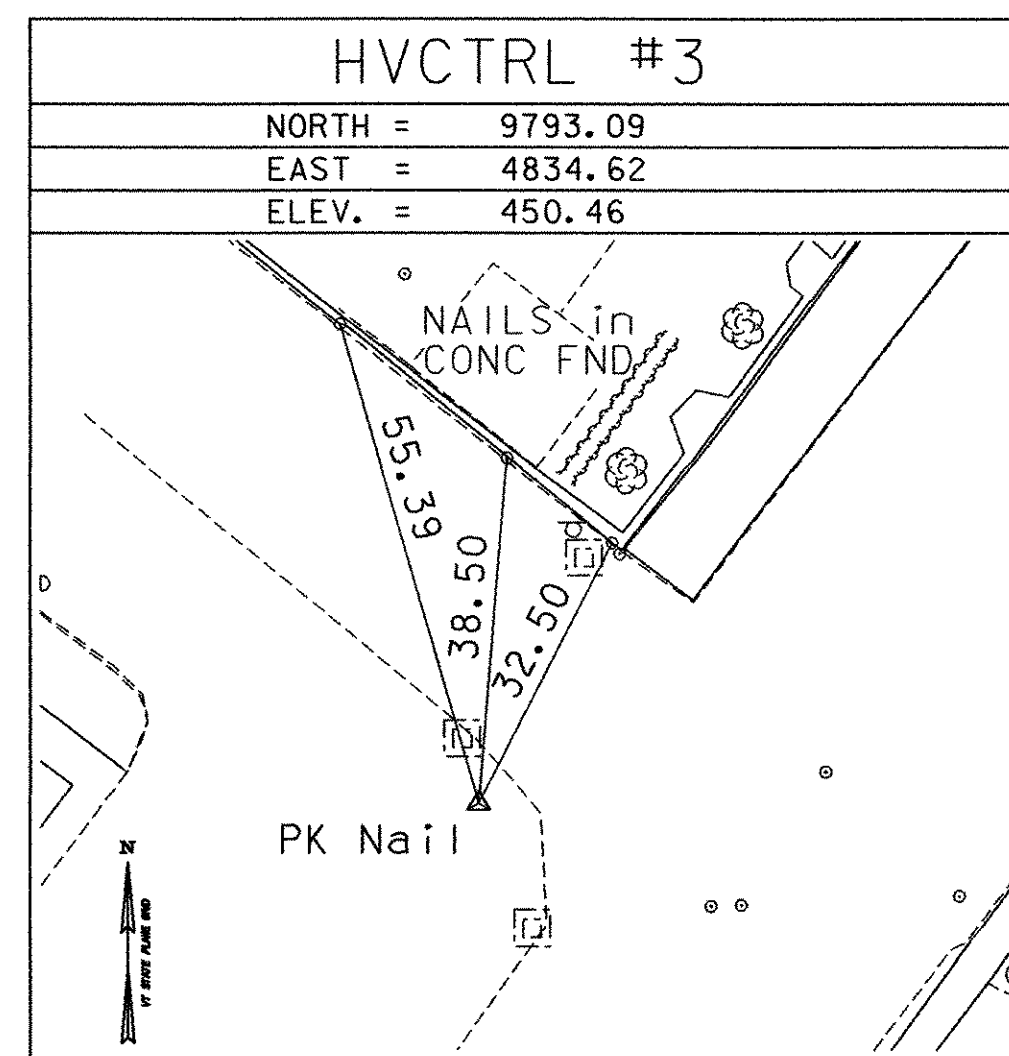
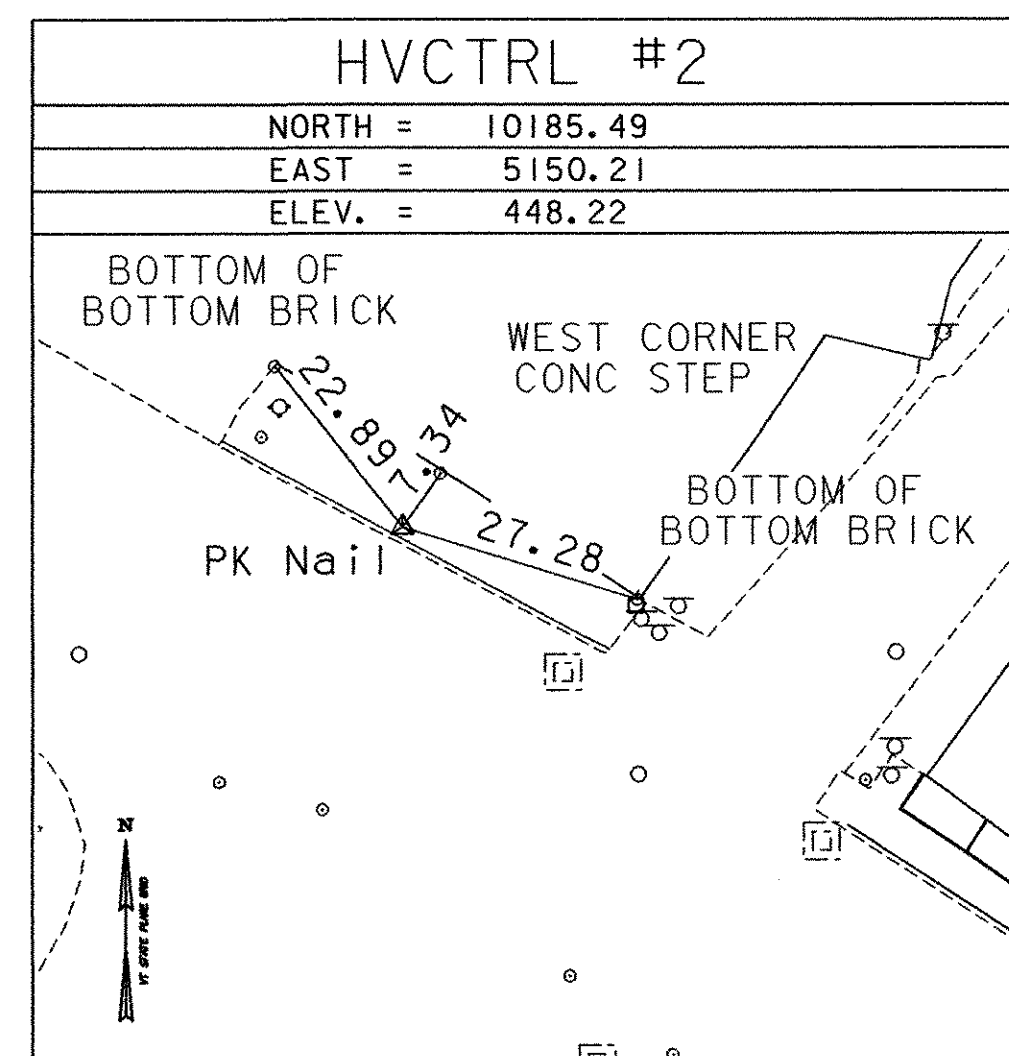
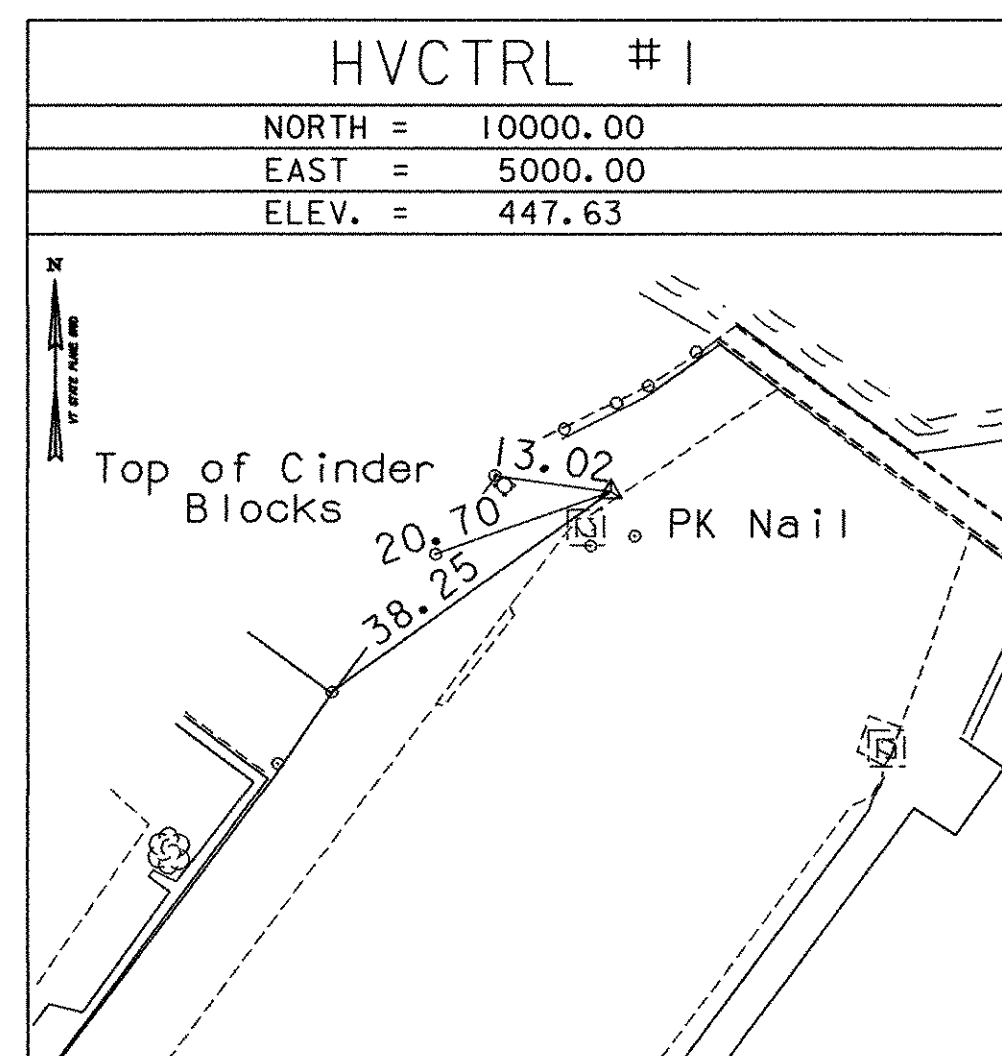


GPS CONTROL POINTS

BM #8  
 C2 = P14 RESET  
 ELEV. = 465.82

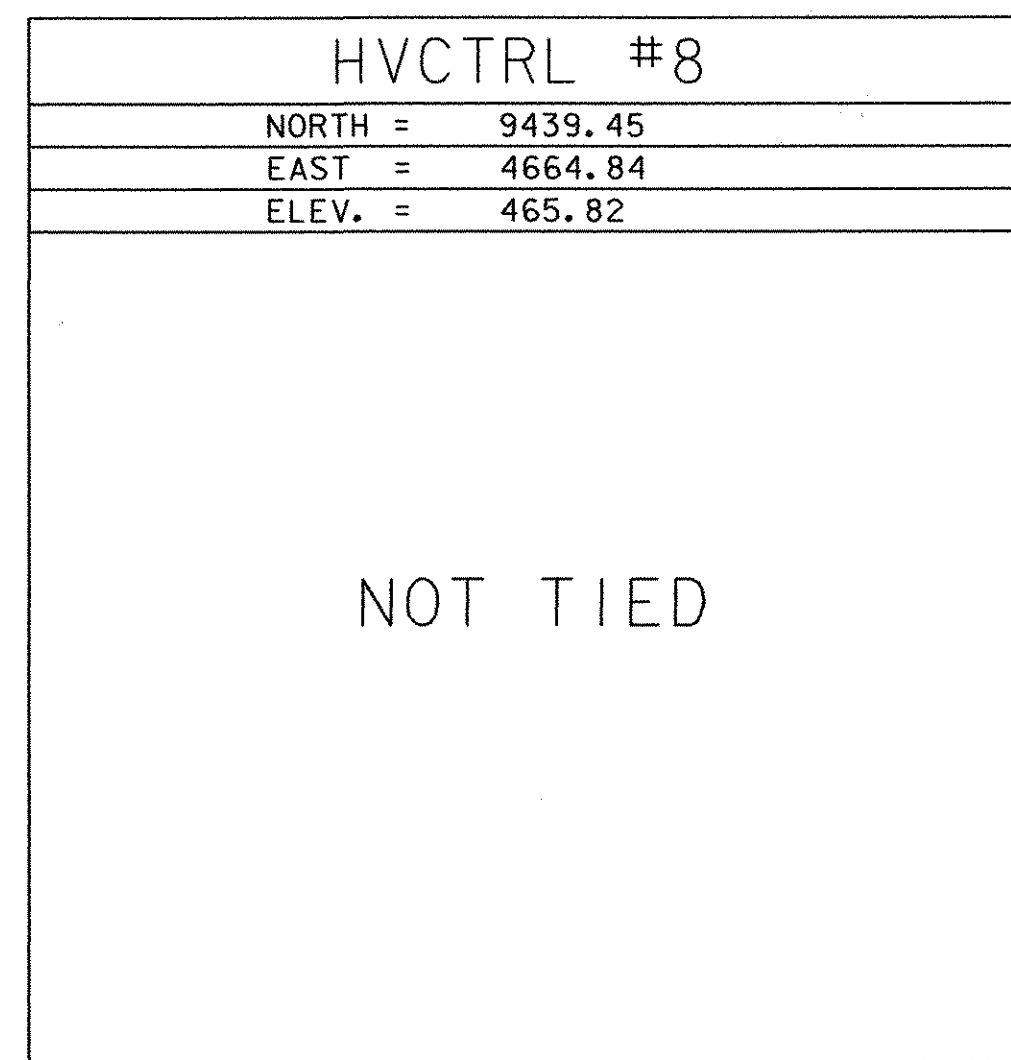
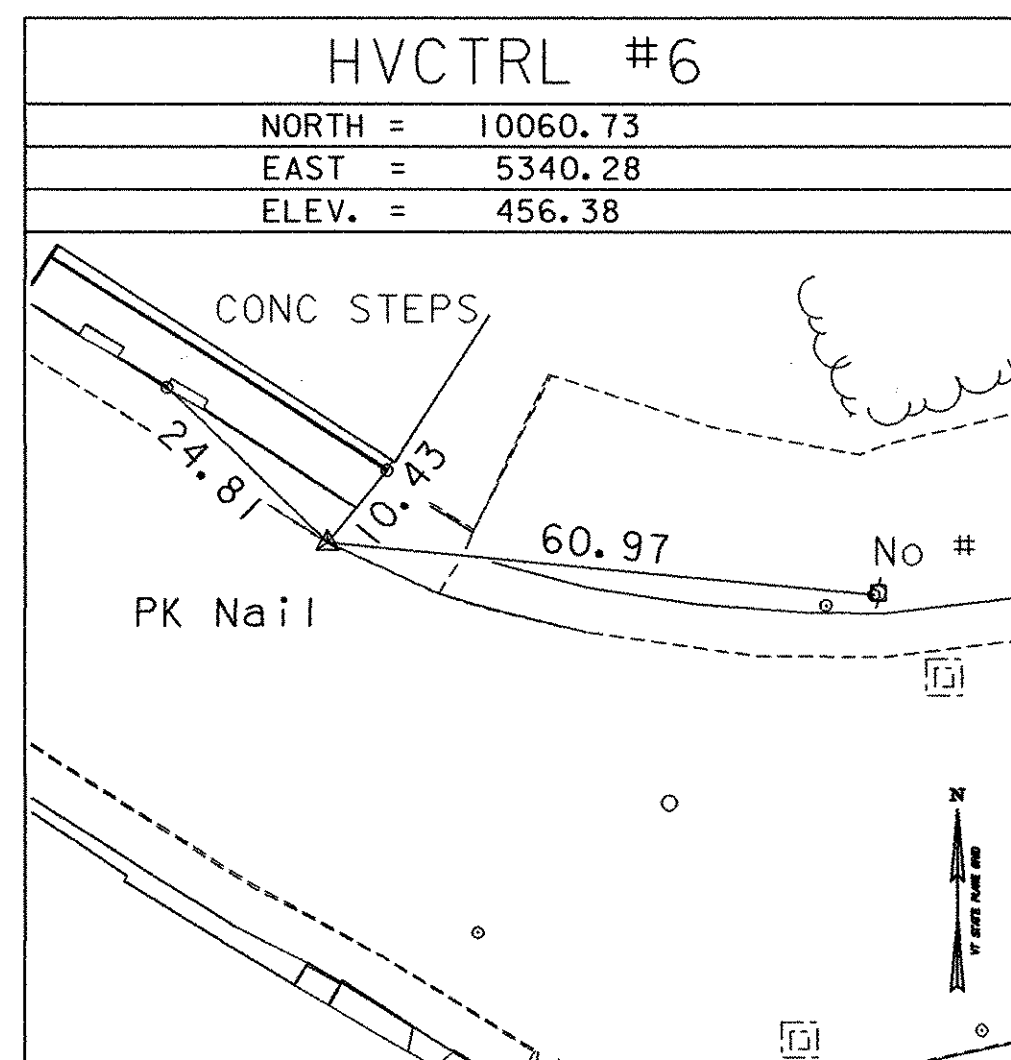
DESCRIBED BY VERMONT AGENCY OF TRANSPORTATION 1995 (CHR) GENERAL LOCATION RICHFORD VERMONT. ABOUT 23.5 MI (37.8 KM) NORTHEAST OF ST. ALBANS, ABOUT 25.5 MI (41.0 KM) WEST OF NEWPORT AND ABOUT 1.5 MI (2.4 KM) SOUTH OF THE US/CANADA BORDER. TO REACH FROM THE INTERSECTION OF VERMONT ROUTES 105 AND 139 (MAIN STREET), GO NORTHEAST ON VT ROUTE 139 FOR 0.1 MI (0.2 KM) TO THE MARK ON THE RIGHT, SET IN THE EAST CORNER OF THE 1.7 M (5.6 FT) SQUARE GRANITE BASE OF THE RICHFORD VETERANS MEMORIAL. THE MARK IS 12.5 M (41.0 FT) SOUTHEAST OF AND ABOUT 1M (3.3 FT) HIGHER THAN THE CENTERLINE OF ROUTE 139, 8.5 M (27.9 FT) NORTHEAST OF THE NORTH CORNER OF THE FRANKLIN-LAMOILLE BANK, 3.7 M (12.1 FT) SOUTHWEST OF A FLAGPOLE, AND 8.2 M (26.9 FT) NORTHEAST OF A FIBERGLASS WITNESS POST.

TRAVERSE TIES

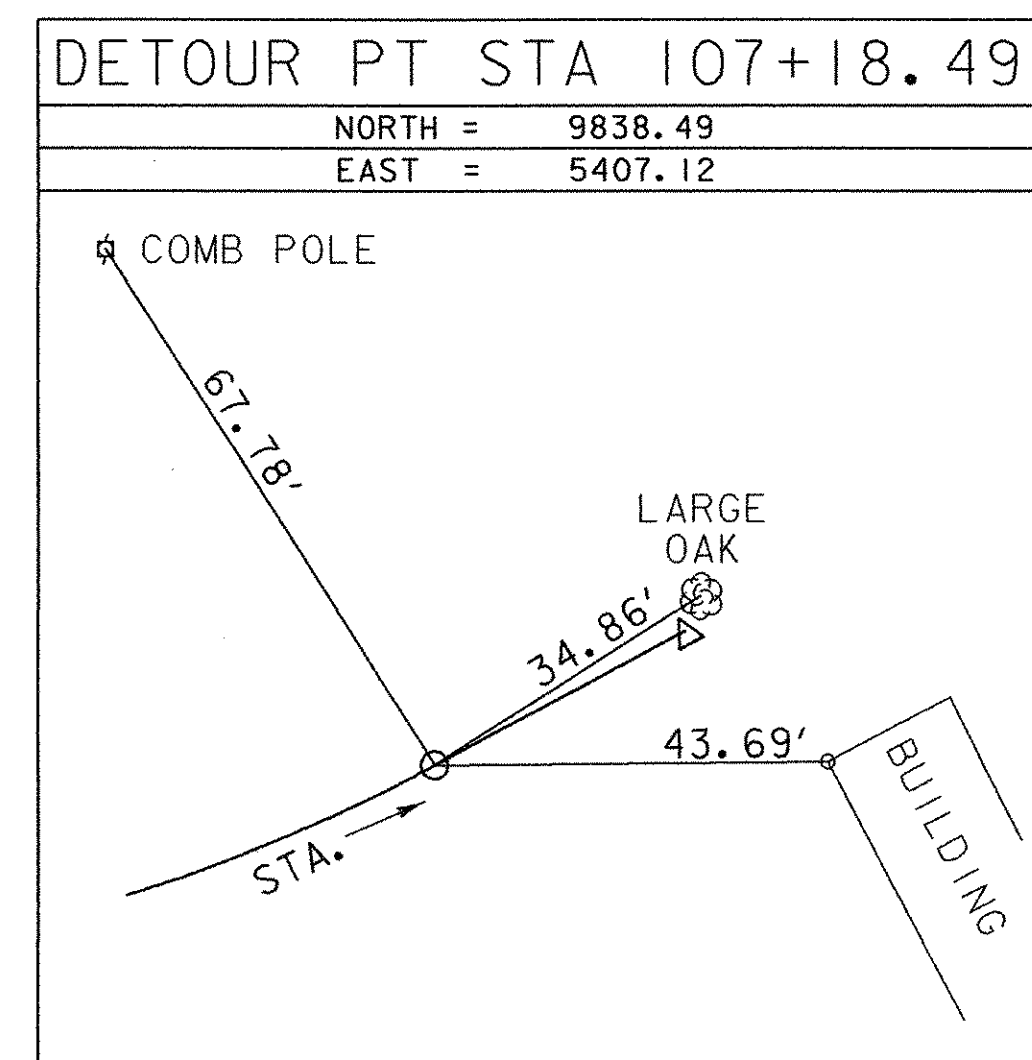
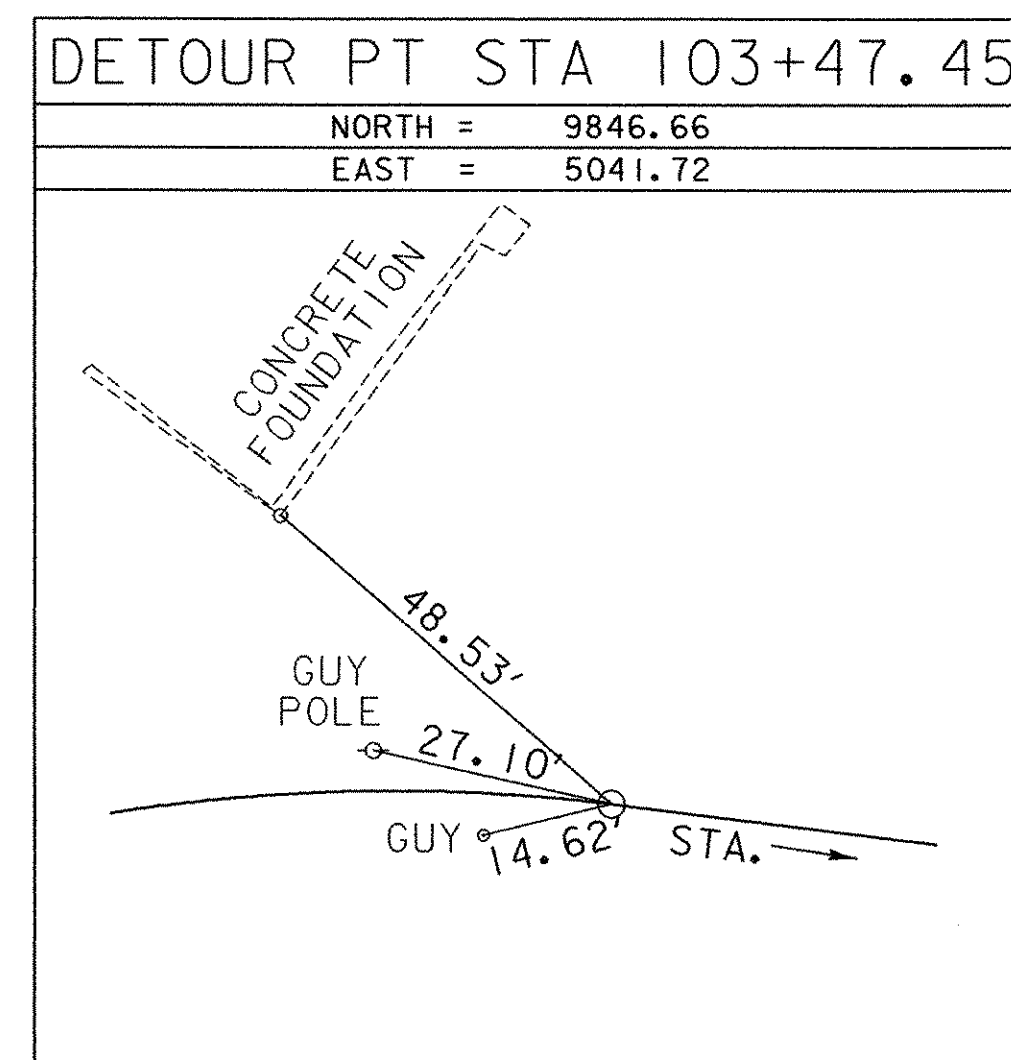
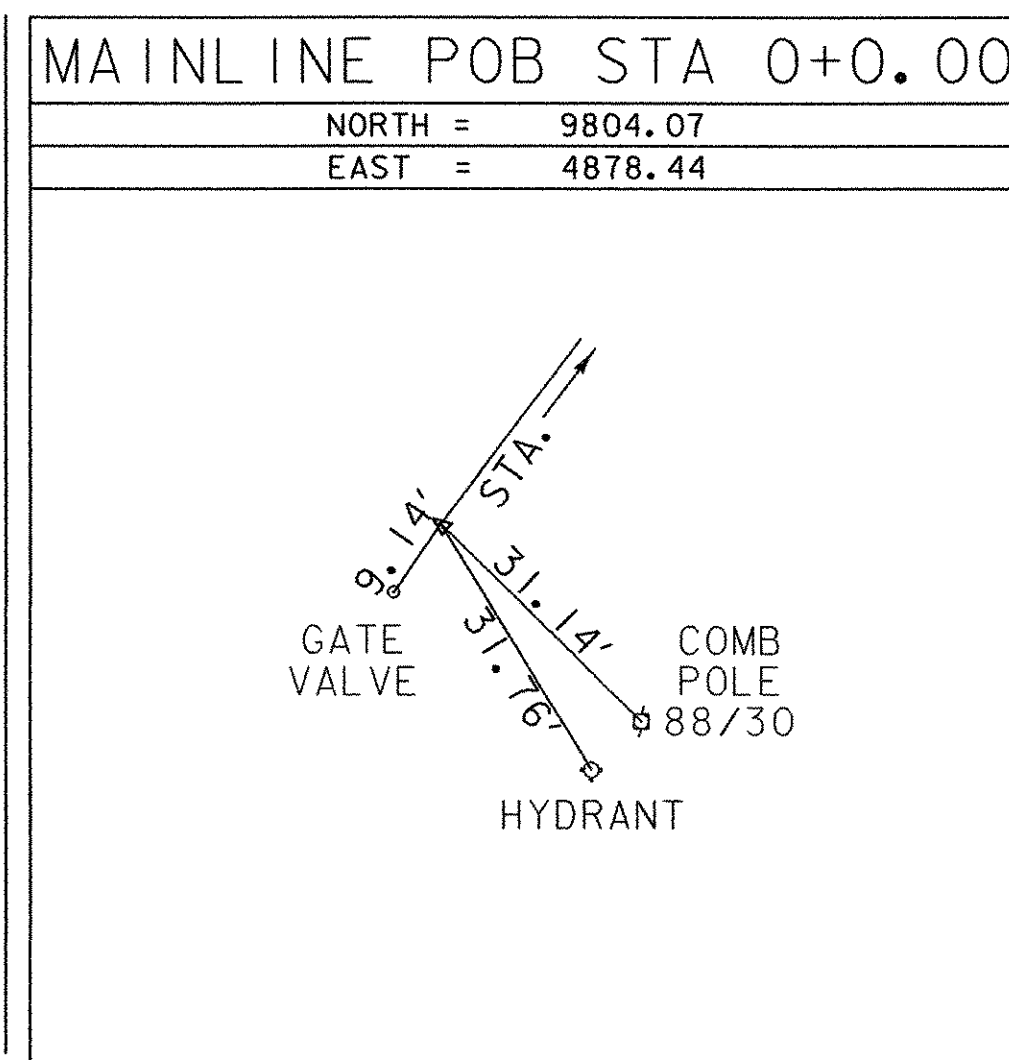


\* Main Traverse Completed 6/11/07 by R. Bullock P.C. & T. Parker

TRAVERSE TIES



ALIGNMENT TIES



DATUM	
VERTICAL	NAVD 88
HORIZONTAL	ASSUMED
ADJUSTMENT	COMPASS

PROJECT NAME:	Richford
PROJECT NUMBER:	BHF 0302(3)S
FILE NAME:	99J242\survey\99J242+1.dgn
PROJECT LEADER:	MJC
DESIGNED BY:	VTRANS/STANTEC
TIE SHEET	
PLOT DATE:	12/18/2007
DRAWN BY:	R. Bullock
CHECKED BY:	VTRANS/STANTEC
SHEET	7 OF 41