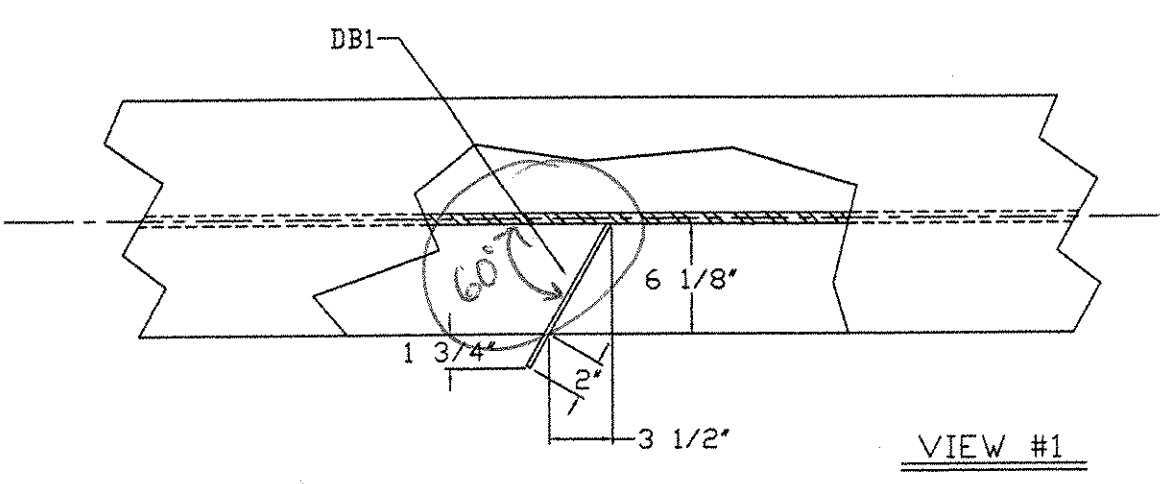
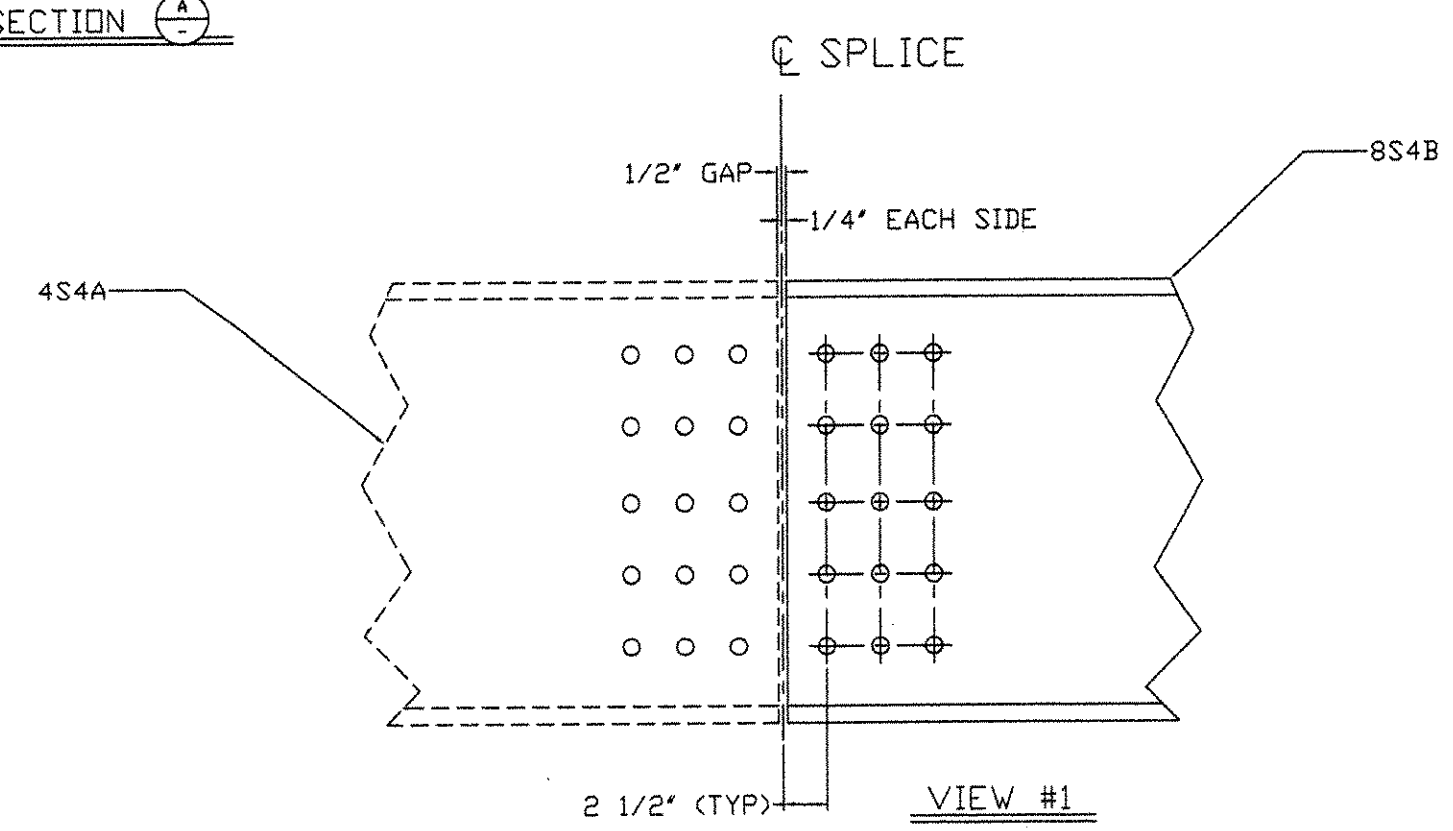
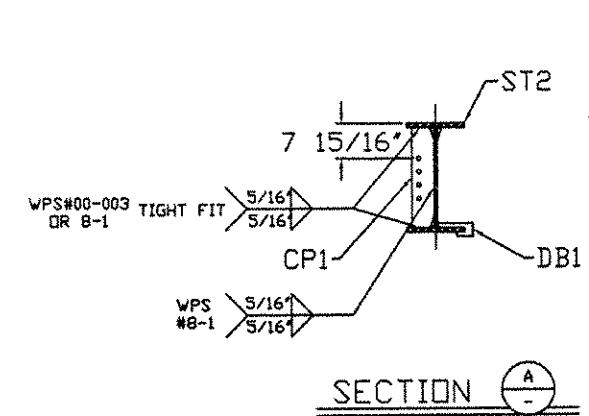
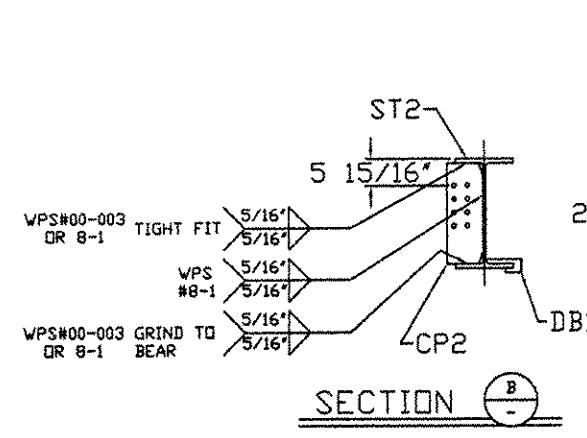
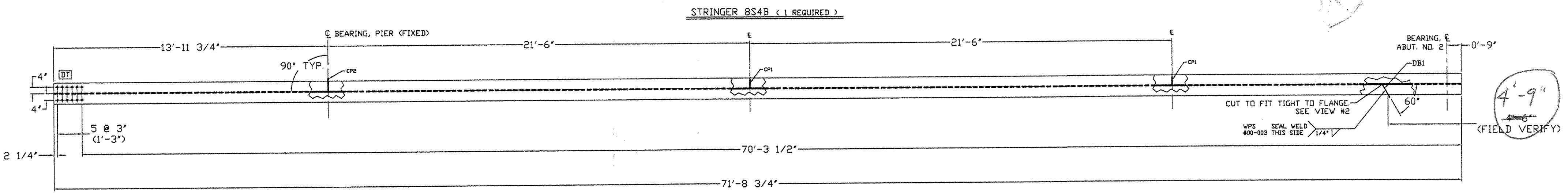
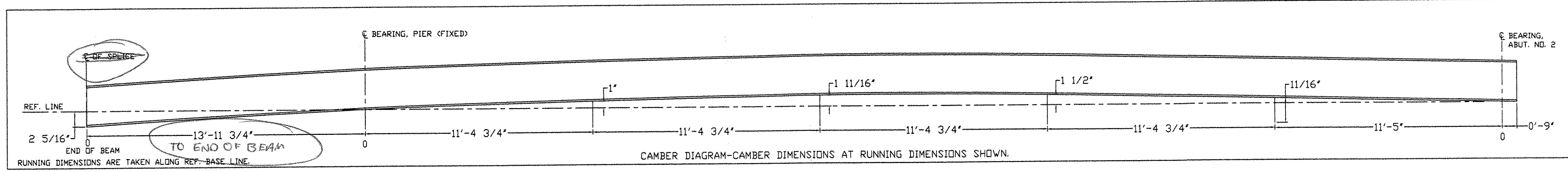


W24 X 131
 W | 2'-0" 1/2" X 5/8"
 F | 1'-0" 7/8" X 15/16"

- NOTES:
1. ALL HOLES ARE 15/16" DIA.
 2. MATERIALS: M270Gr50W (UN)
 3. FASTENERS: 7/8" A325 TYPE 3
 4. PAINT: NONE.
 5. DIMENSION ARE IN FEET & INCHES.
 6. GENERAL NOTES: SEE DRAWING GNI
 7. ENDS OF BEAMS SHALL BE CUT SQUARE AT ABUTMENTS.
 8. ALL STIFFENERS ARE 90° TO BOTTOM FLANGE.

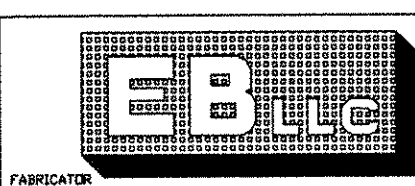
BILL OF MATERIAL											
REV. NO.	SHIP MARK	PIECE MARK	QTY.	TYPE OF MATERIAL	SIZE OF MATERIAL	GRADE	LENGTH	FINISH	NOTES	WEIGHT	
	BS4B	ST1	1	W	W24 X 131	M270GR50W T2	71'-8 3/4"		CVN	9397#	
	BS4B	CP1	2	PLATE	PL 1/2" X 5"	M270GR50W	1'-10 5/8"			32#	
	BS4B	CP2	1	PLATE	PL 1/2" X 8"	M270GR50W	1'-10 5/8"			26#	
	BS4B	DB1	1	PLATE	PL 1/4" X 3"	M270GR50W	0'-9 3/16"			2#	



REVISIONS AS CORRECTED
 REVISIONS TO BE REVISED AND RESUBMITTED
 UNACCEPTABLE
 7/22/04

REVISIONS		
NO.	DATE	DESCRIPTION
	7/14/04	FOR APPROVAL

ITEM NO: 506.50			
FRANK W. WHITCOMB CONSTRUCTION CORP. CONTRACT: BND 1442 (32)			
CHURCH STREET (TH S) OVER WILLIAMS RIVER BRIDGE NO. 11 CHESTER, VT			
TITLE: STRINGER DETAIL 8S4B			
DRAWN BY: 4/26/04 DANA BACDIN	SHIP ORDER: 5025	DWG. NO.: 8	
CHK BY: JH 7/15/04	BLOCK NO.:	SHEET NO.: 1 OF 1	



EASTERN BRIDGE LLC
 BURLINGTON, VT 05402
 802-248-5602

9457