

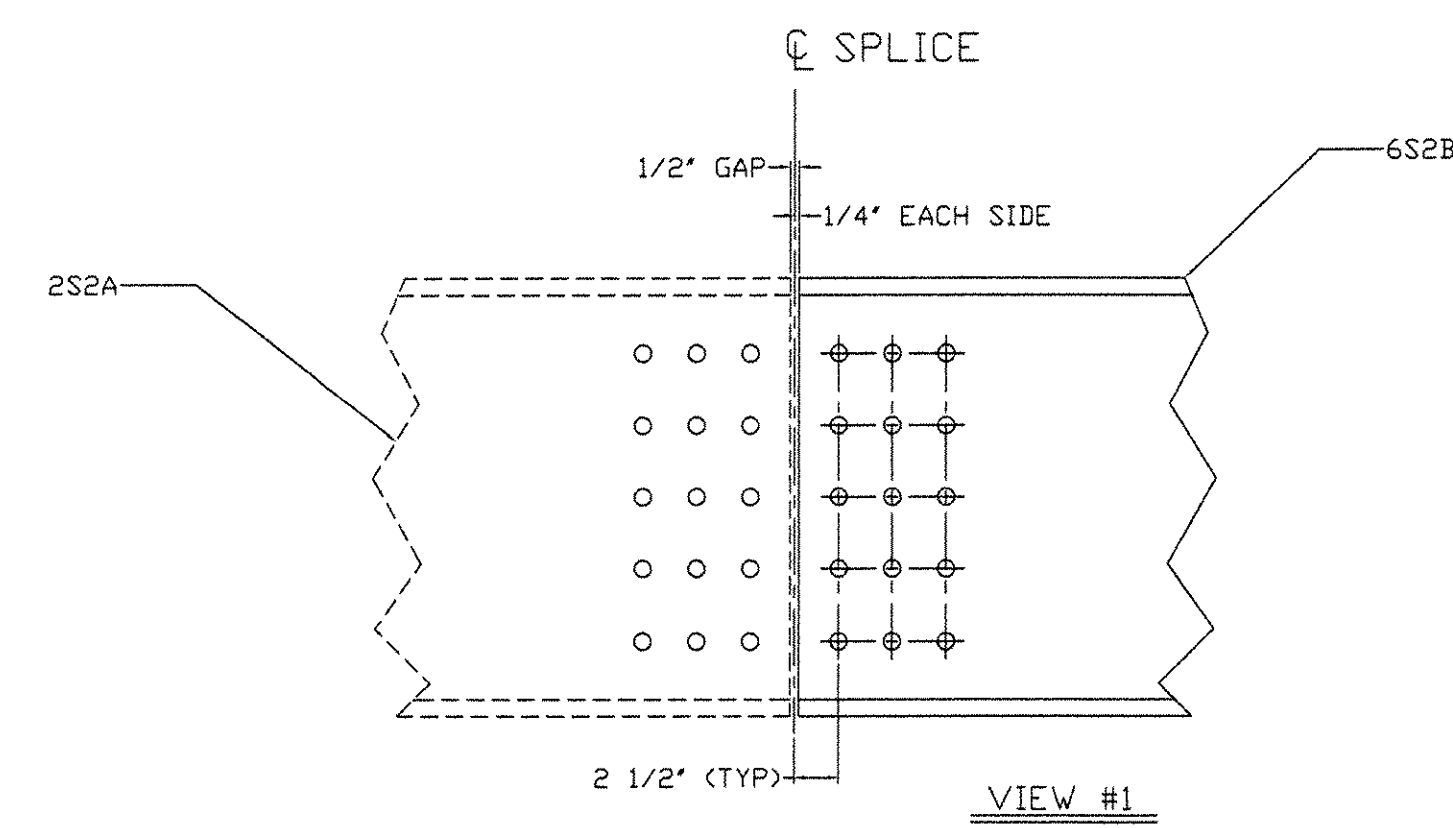
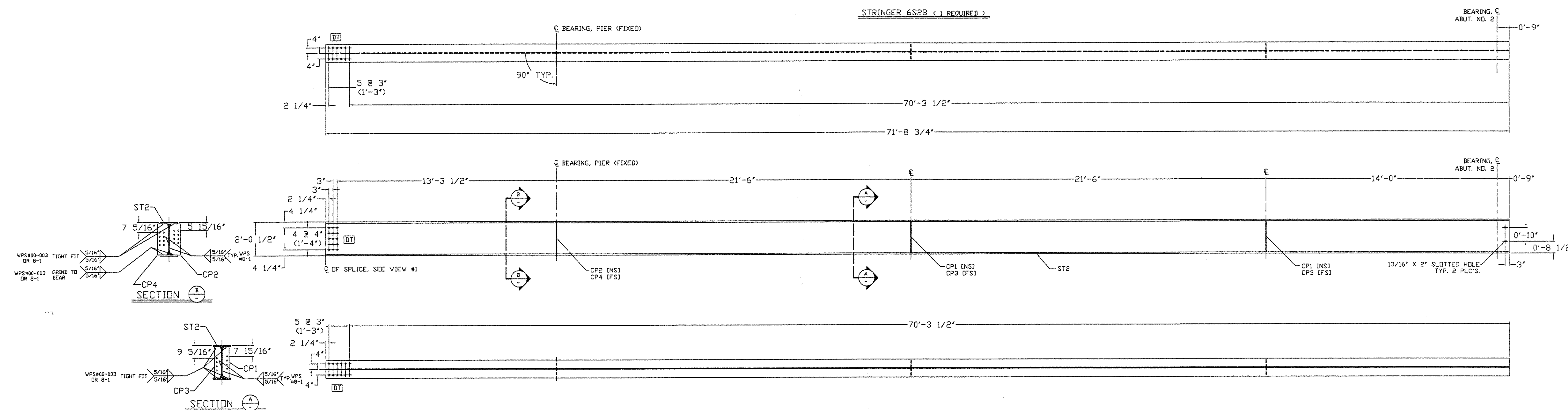
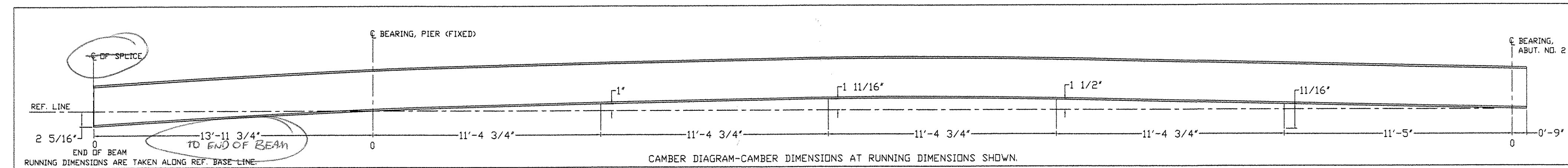
W24 X 131
 W | 2'-0 1/2" X 5/8"
 F | 1'-0 7/8" X 15/16"

- NOTES:
1. ALL HOLES ARE 15/16" DIA.
 2. MATERIALS: M270G50W (UN)
 3. FASTENERS: 7/8" A325 TYPE 3
 4. PAINT: NONE.
 5. DIMENSION ARE IN FEET & INCHES.
 6. GENERAL NOTES: SEE DRAWING G01
 7. ENDS OF BEAMS SHALL BE CUT SQUARE AT ABUTMENTS.
 8. ALL STIFFENERS ARE 90° TO BOTTOM FLANGE.

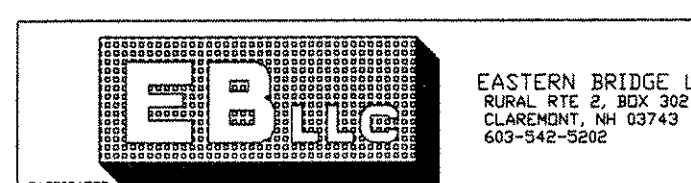
BILL OF MATERIAL

REV. NO.	SHIP MARK	PIECE MARK	QTY.	TYPE OF MATERIAL	SIZE OF MATERIAL	GRADE	LENGTH	FINISH	NOTES	WEIGHT
	6S2B	ST2	1	W	W24 X 131	M270GR50W TZ	71'-8 3/4"		CVN	9397#
	6S2B	CP1	2	PLATE	PL 1/2" X 5"	M270GR50W	1'-10 5/8"			32#
	6S2B	CP2	1	PLATE	PL 1/2" X 8"	M270GR50W	1'-10 5/8"			26#
	6S2B	CP3	2	PLATE	PL 1/2" X 5"	M270GR50W	1'-10 5/8"			32#
	6S2B	CP4	1	PLATE	PL 1/2" X 8"	M270GR50W	1'-10 5/8"			26#

9513



APPROVED AS CORRECTED:
 PREPARED, REVIEWED AND PRESUMED
 ACCEPTED UNACCEPTABLE
 I am issuing this only for compliance with the design request of the
 client and compliance with the information given in the contract
 documents. The Engineer assumes no liability for errors or
 omissions that may be contained herein. The Contractor, by
 issuing and submitting these documents, certifies that
 they are prepared in accordance with the Contract Documents.
 CONTRACT NO. 1442-032
 DATE: 7/22/04
 SIGNATURE: [Handwritten Signature]



REVISIONS		FRANK W. WHITCOMB CONSTRUCTION CORP.	
NO.	DATE	DESCRIPTION	CONTRACT: BMD 1442 (32)
	7/14/04	FOR APPROVAL	VT ADT
CHURCH STREET (TH 5) OVER WILLIAMS RIVER BRIDGE NO. 11 CHESTER, VT			
TITLE: STRINGER DETAIL 6S2B			
DRAWN BY: 4/26/04	SHOP ORDER: 5025	DWG. NO.: 6	
OK'D BY: JH 7/15/04	BLOCK NO.:	SHEET NO.: 1 OF 1	

03455