

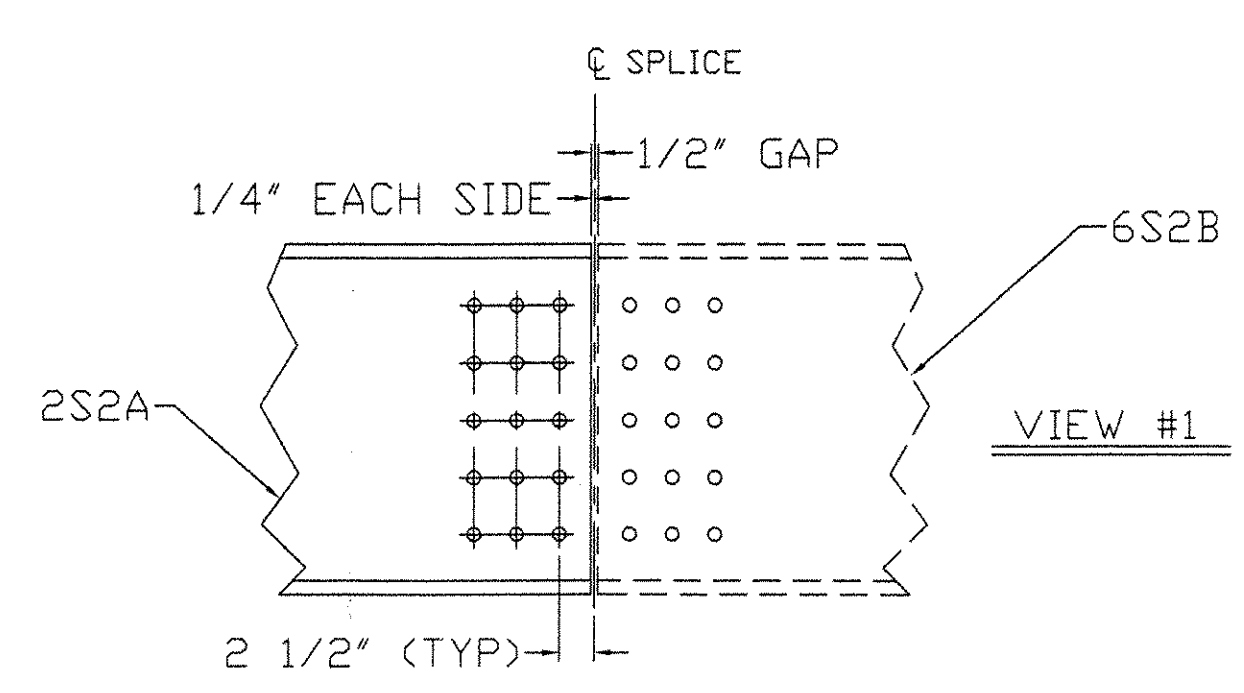
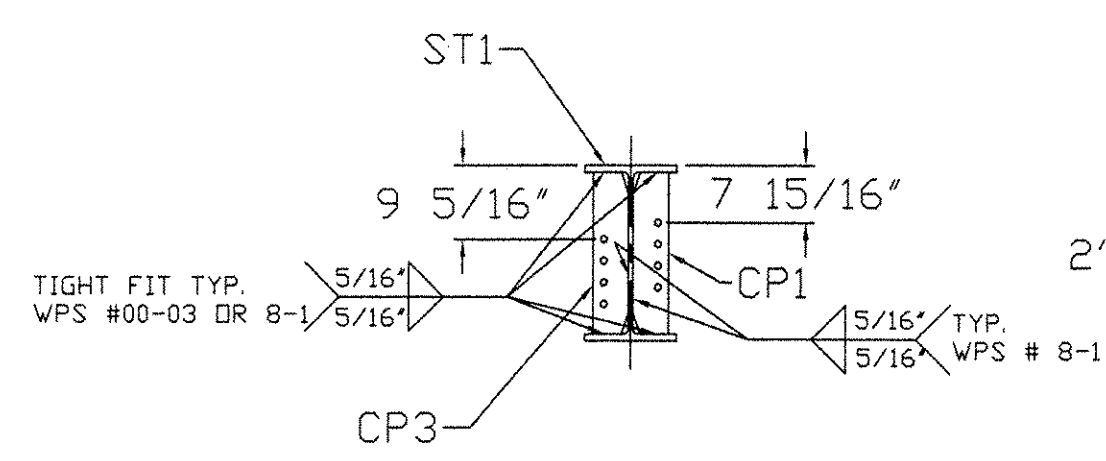
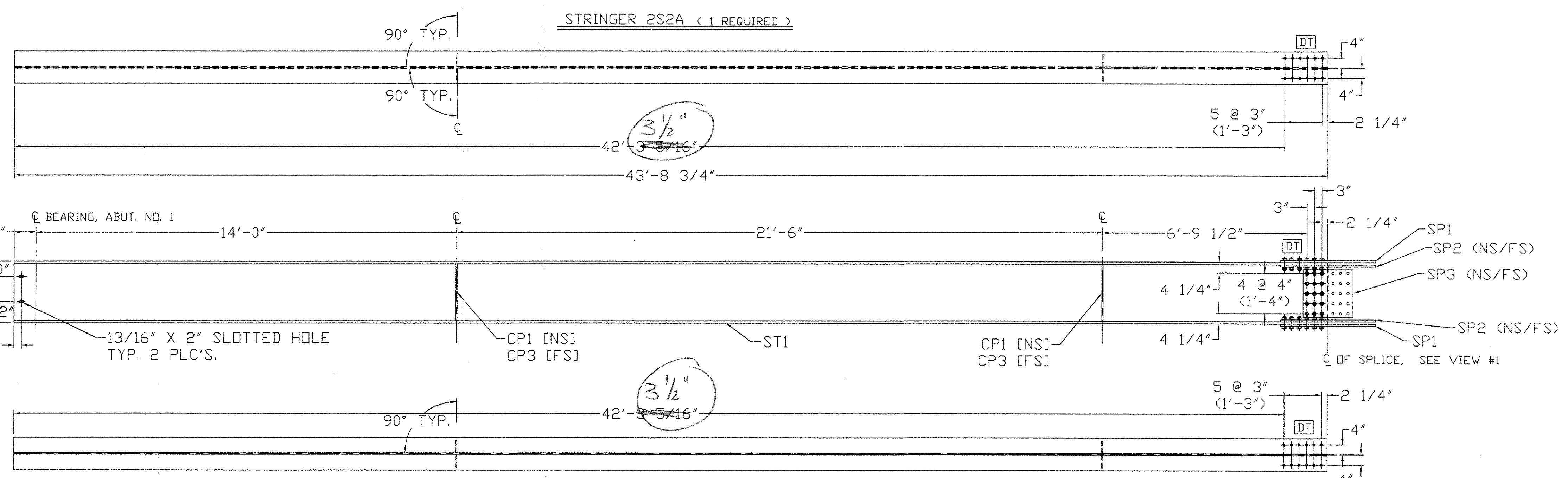
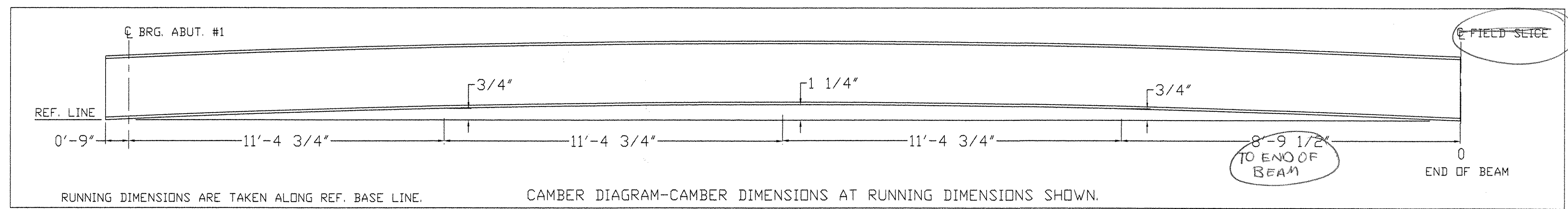
8 7 6 5 4 3 2 1

W24 X 131	
W	2'-0 1/2" X 5/8"
F	1'-0 7/8" X 15/16"

- NOTES:
1. ALL HOLES ARE 15/16" DIA.
 2. MATERIALS: M270G+50W (UN)
 3. FASTENERS: 7/8" A325 TYPE 3
 4. PAINT: NONE.
 5. DIMENSION ARE IN FEET & INCHES.
 6. GENERAL NOTES: SEE DRAWING GNI
 7. ENDS OF BEAMS SHALL BE CUT SQUARE AT ABUTMENTS.
 8. ALL STIFFENERS ARE 90° TO BOTTOM FLANGE.

BILL OF MATERIAL										
REV. NO.	SHIP MARK	PIECE MARK	QTY.	TYPE OF MATERIAL	SIZE OF MATERIAL	GRADE	LENGTH	FINISH	NOTES	WEIGHT
	2S2A	ST1	1	W	W24 X 131	M270G50W TZ	43'-8 3/4"		CVN	5729#
	2S2A	CP1	2	PLATE	PL 1/2" X 5"	M270G50W	1'-10 5/8"			32#
	2S2A	CP3	2	PLATE	PL 1/2" X 5"	M270G50W	1'-10 5/8"			32#
	2S2A	SP1	2	PLATE	PL 3/4" X 12"	M270G50W	3'-2"		CVN	194#
	2S2A	SP2	4	PLATE	PL 3/4" X 5"	M270G50W	3'-2"		CVN	162#
	2S2A	SP3	2	PLATE	PL 3/8" X 19"	M270G50W	1'-8"		CVN	81#

6230



ACCEPTED AS SHOWN
 ACCEPTED AS CORRECTED
 REVISIONS
 REVISIONS UNACCEPTABLE
 7/22/09
 EASTERN BRIDGE LLC
 RURAL RTE 8, BOX 208
 CLAREMONT, NH 03743
 603-542-5802

REVISIONS			ITEM NO: 506.50	
NO.	DATE	DESCRIPTION		
7/14/04		FOR APPROVAL	FRANK W. WHITCOMB CONSTRUCTION CORP. CONTRACT: BHO 1442 (32) VT ADT	
			CHURCH STREET (TH S) OVER WILLIAMS RIVER BRIDGE NO. 11 CHESTER, VT	
			TITLE: STRINGER DETAIL 2S2A	
			DRAWN BY: 4/23/04	SHOP ORDER: 5025
			DANA BACIN	DWG. NO.: 2
			CKD BY: 7/15/04	BLOCK NO.: SHEET NO. 1 OF 1

03055