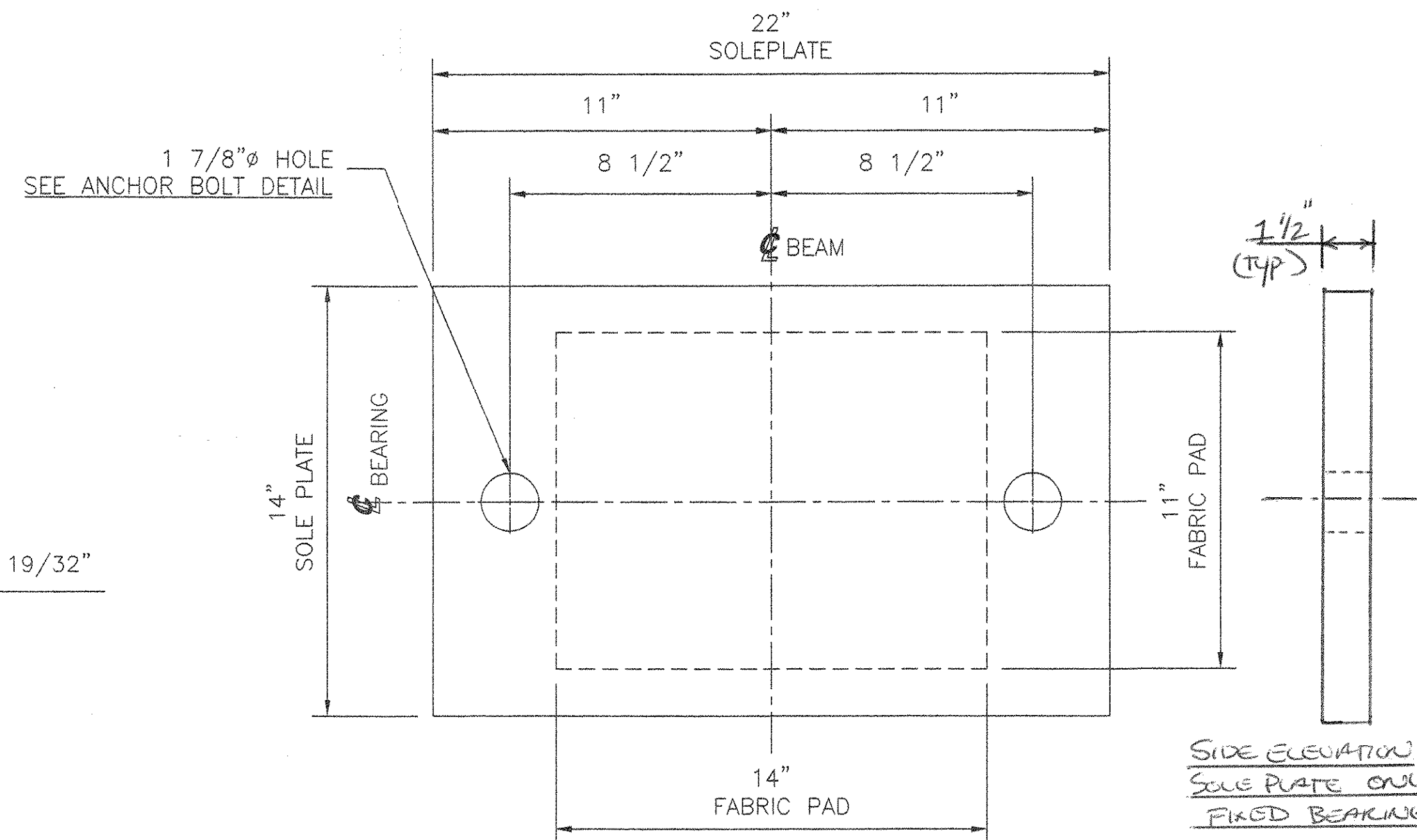
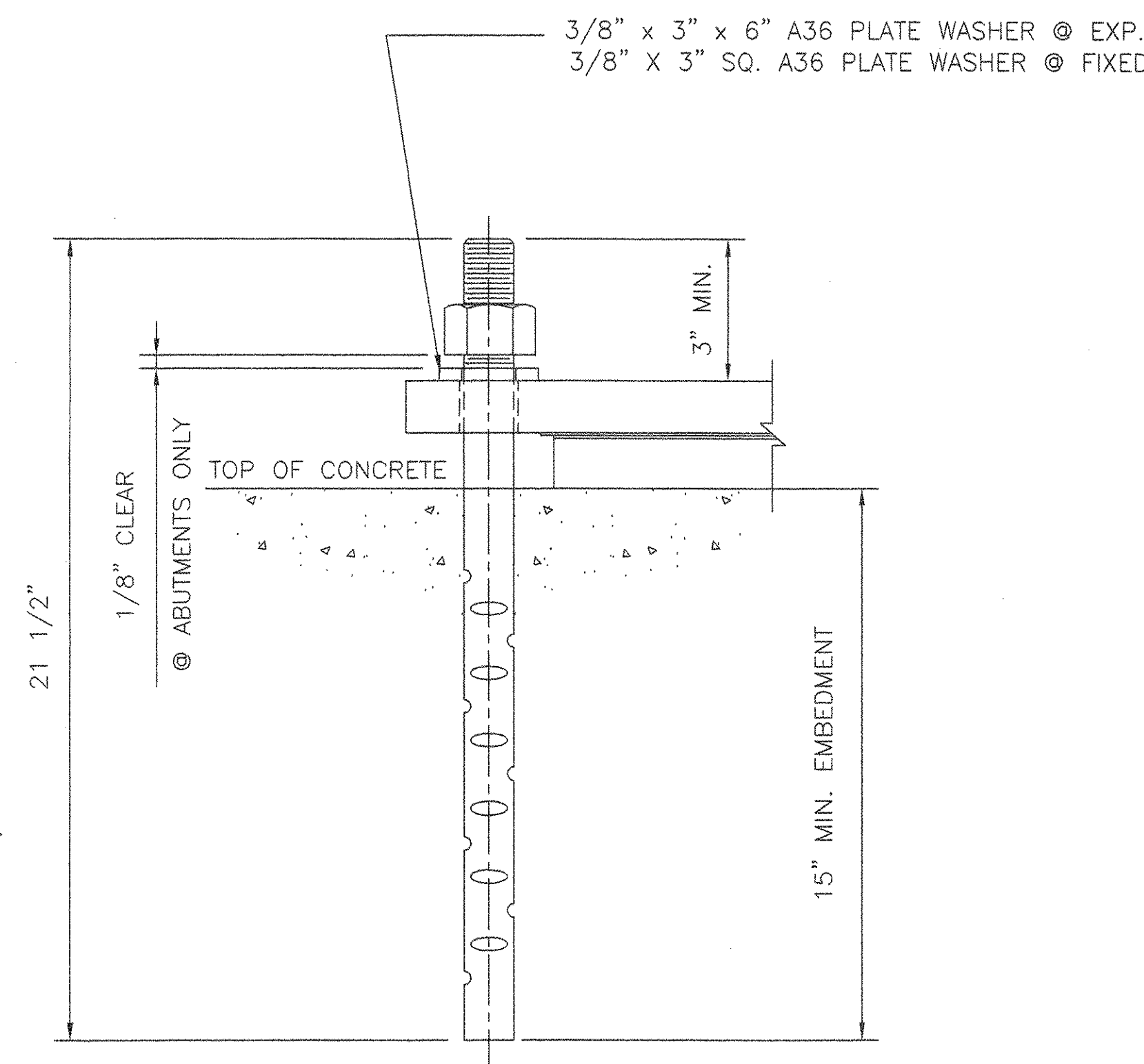


SIDE ELEVATION
SOLE PLATE ONLY
EXPANSION BEARING

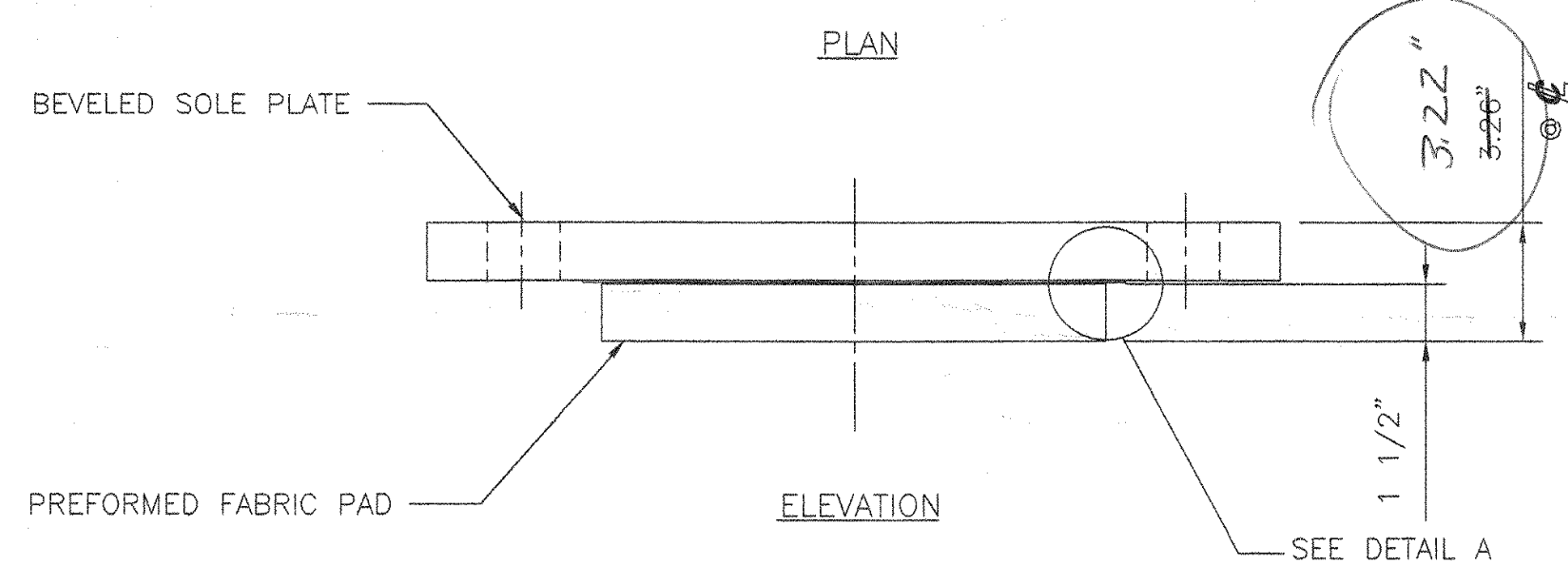


SIDE ELEVATION
SOLE PLATE ONLY
FIXED BEARING

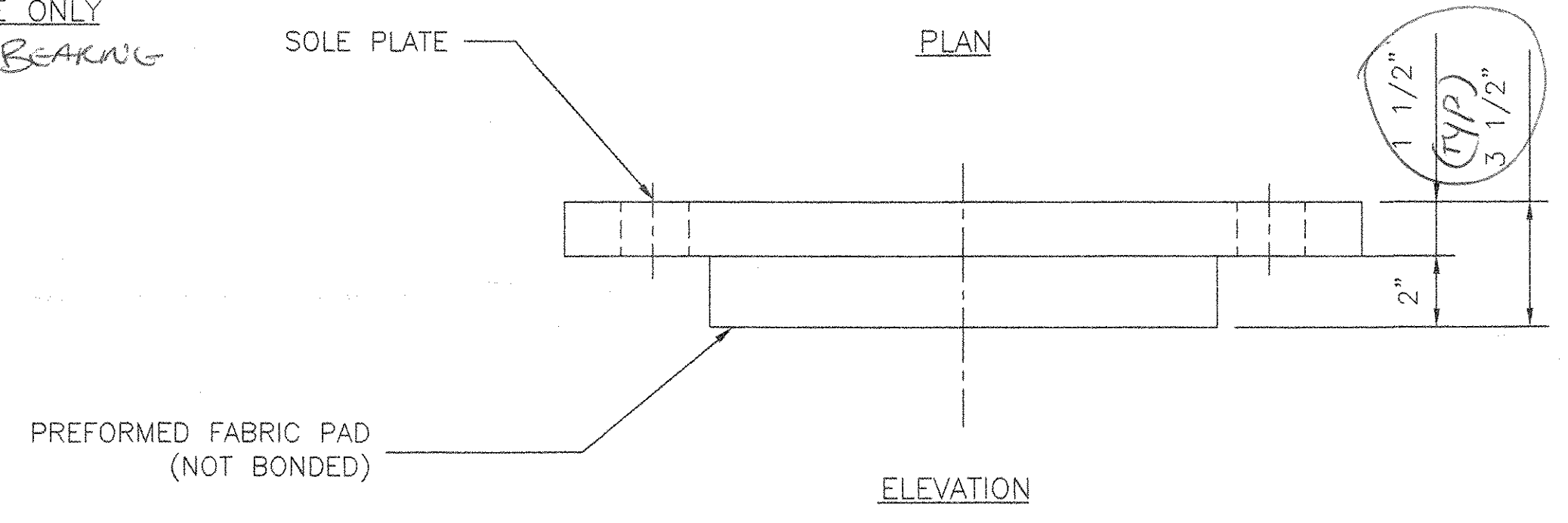


ANCHOR BOLT DETAIL

1 1/2" Ø X 21 1/2" LG. ASTM F1554 GR. 55 SWEDGED ANCHOR BOLT W/4" OF THREADS ONE END, ONE ASTM A563 HEAVY HEX NUT & ONE A36 PLATE WASHER. ALL GALV.



EXPANSION BEARING
LOCATE AT ABUTMENTS 1 AND 2
QTY - 8



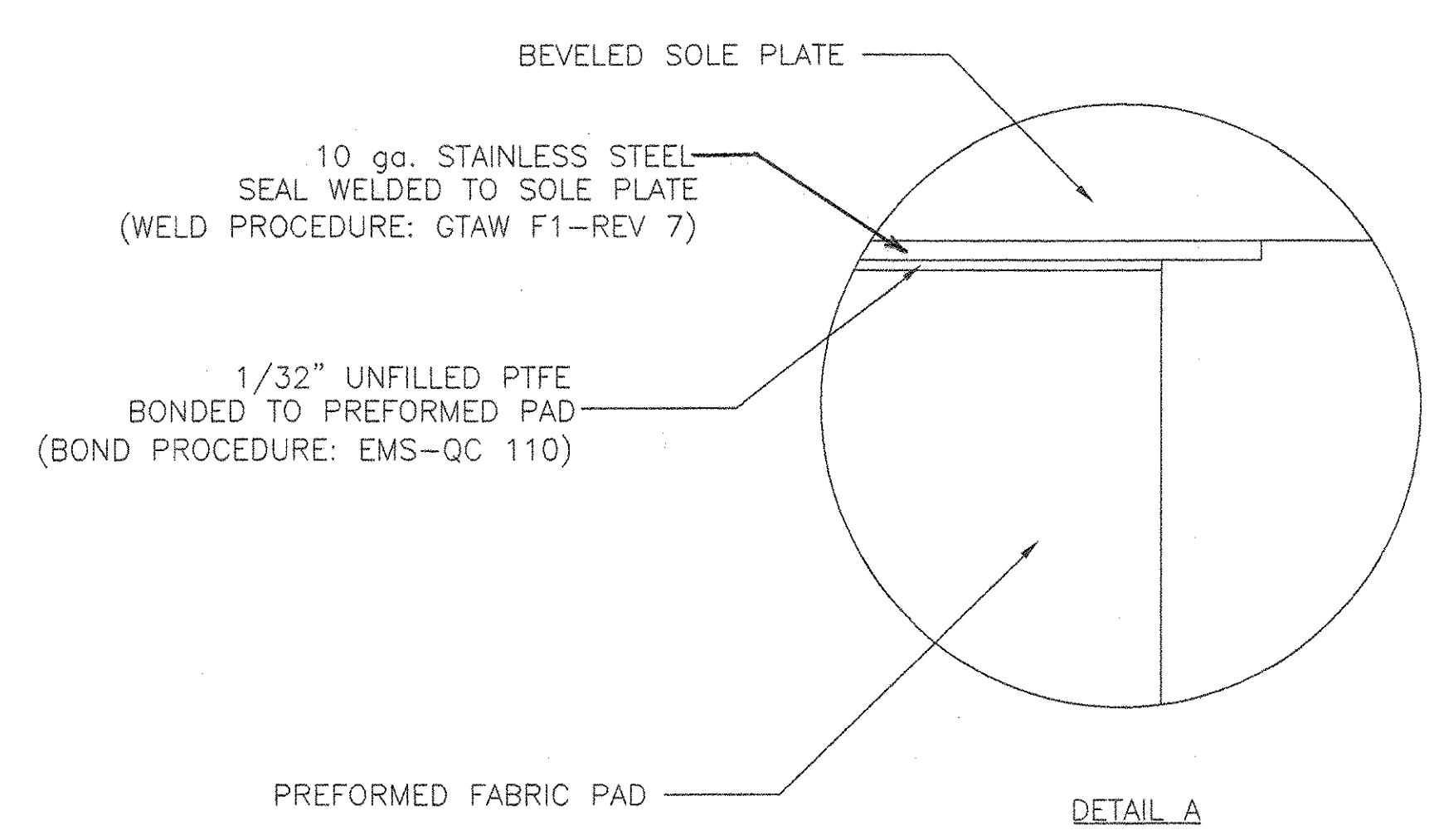
FIXED BEARING
LOCATE AT PIER
QTY - 4

BEARING DATA AND NOTES

- STEEL - ASTM A709 GR36 ZINC METALLIZED AND PAINTED WITH AN APPROVED SEALER
- PTFE - ASTM D4894 VIRGIN UNFILLED
- STAINLESS STEEL - ASTM A240 TYPE 304 WITH 30 RMS FINISH OR LESS ON SLIDING SURFACE.
- PREFORMED FABRIC PADS - AASHTO 18.4.9.1 DIV. 2
- ANCHOR BOLTS - F1554 GR55 SWEDGED AND GALVANIZED
- BEARINGS SHALL BE SHIPPED AS COMPLETE UNITS AND SHALL BE WRAPPED FOR PROTECTION DURING TRANSIT AND STORAGE.
- BEARINGS SHALL BE MARKED FOR IDENTIFICATION WITH LOCATION.
- COSMEC, INC. REPRESENTATIVE: MR. MATT McANDREWS (508) 668-6600
- ⊗ INDICATES THICK END OF SOLE PLATE
- LOCATION OF FABRICATION: 70 SOUTH ST. WALPOLE, MA 02081
- PREFORMED BEARING PAD DESIGN CRITERIA:
 - ALLOWABLE BEARING PRESSURE ON CONCRETE = 1000 PSI
 - MINIMUM ALLOWABLE DESIGN ROTATION = 0.015 RADIAN
 - HORIZONTAL CAPACITY SHALL BE A MINIMUM OF 6% OF THE VERTICAL LOAD
 - DESIGN LOAD PER BEARING: ABUTMENTS = 90 KIPS & PIER = 150 KIPS

- ALL BEARING DEVICES SHALL BE METALIZED AS PER SUBSECTION 531.04 (B) AND 506.15 (b) OF THE GENERAL SPECIAL PROVISIONS. AREAS OF METALIZING DAMAGED BY FIELD WELDING OR HANDLING SHALL BE REPAIRED IN ACCORDANCE WITH SUPPLEMENTAL SPECIFICATIONS 513 WHICH REFERENCES ASTM A760.
- ALL EDGE CORNERS SHALL BE ROUNDED TO 1/16" RADIUS.
- PROTECT PTFE AND STAINLESS STEEL SURFACES FROM WELD SPATTER, DIRT, OR ANY OTHER FOREIGN MATERIALS.
- BEARINGS MUST NOT BE DISASSEMBLED.

THE CONTRACTOR SHALL VERIFY THAT ALL ASTM SPECIFICATIONS NOTED ON THESE PLANS CORRESPONDS TO THE APPROPRIATE AASHTO SPECIFICATIONS REFERENCED IN THE STANDARD SPECIFICATIONS.



DETAIL A

ACCEPTED	DATE: 6/10/04
ACCEPTED AS CORRECTED	BY: JEA
REJECTED, REVISE AND RESUBMIT	
REJECTED, UNACCEPTABLE	

Checking is only for conformance with the design concept of the Project and compliance with the information given in the Contract Documents. The Engineer assumes no liability for errors or omissions that may be contained herein. The Contractor, by approving and submitting these documents, verifies their accuracy as stipulated on the Contractor's Shop Drawing Stamp.

DUBOIS AND KING
By: JEA

STATE OF VERMONT
AGENCY OF TRANSPORTATION
BRIDGE NO. 11
HIGHWAY TH 5
BRIDGE ON CHURCH STREET
OVER WILLIAMS RIVER
TOWN OF CHESTER
PROJECT NO. BHO 1442 (32)

COSMEC, INC. 70 SOUTH STREET
WALPOLE, MA 02081

SCALE: 1/4" = 1" DRAWN BY: DCW CHECKED BY: PJM
DATE: 05.21.04 DATE: 05.21.04

COSMEC PREFORMED FABRIC PAD BEARINGS
CUSTOMER: F.W. WHITCOMB S.D. NUMBER: 60063 DRAWING NUMBER: 4187 REV.