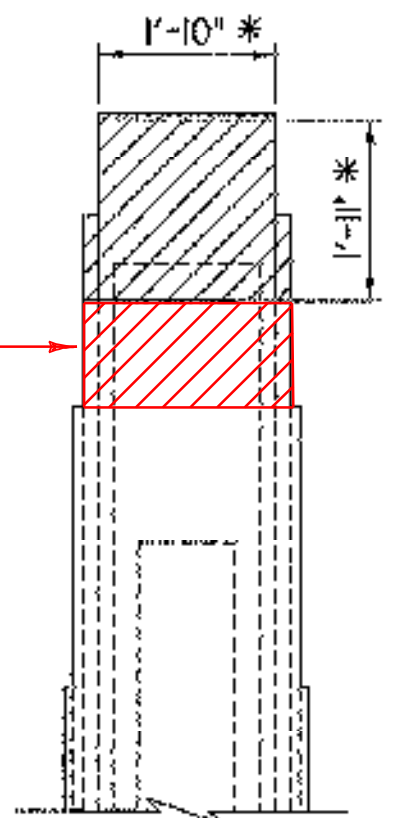


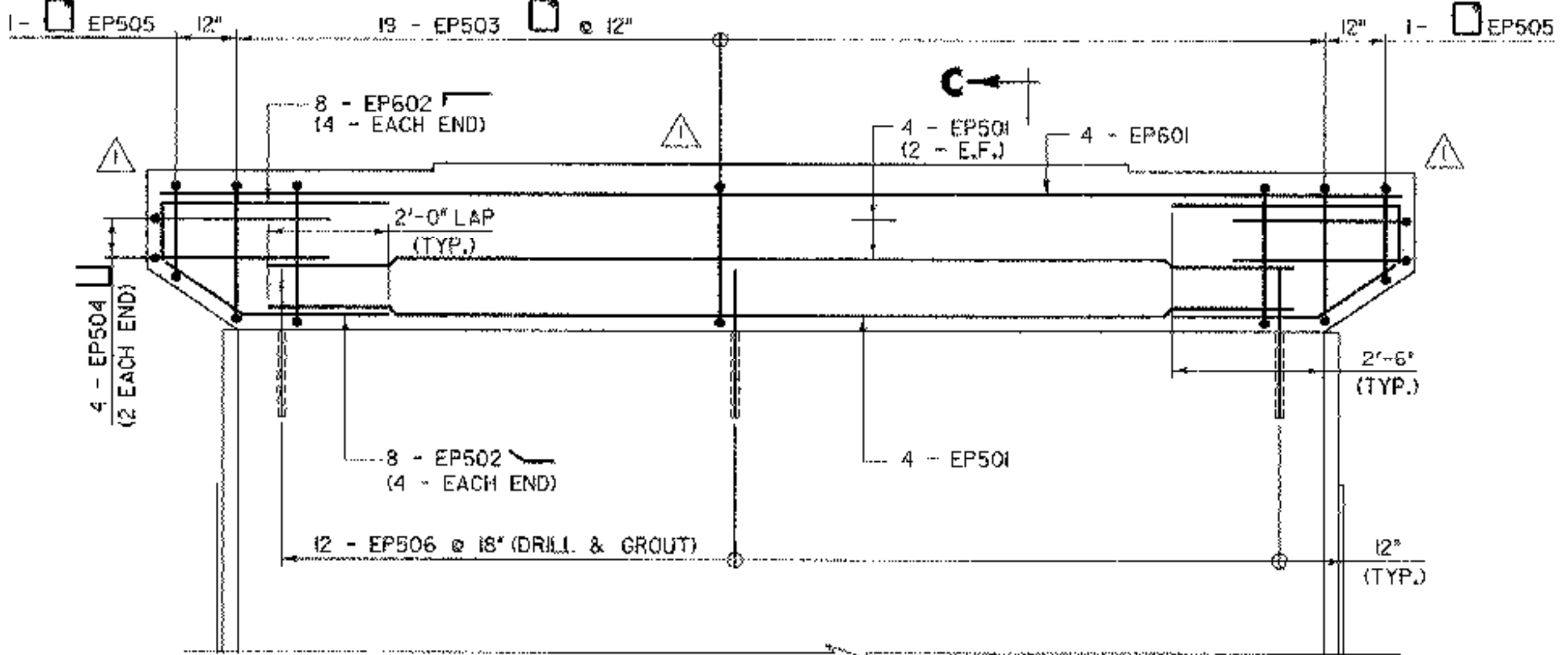
**ELEVATION - REMOVAL**

SCALE 1/2" = 1'-0"  
0 1 2



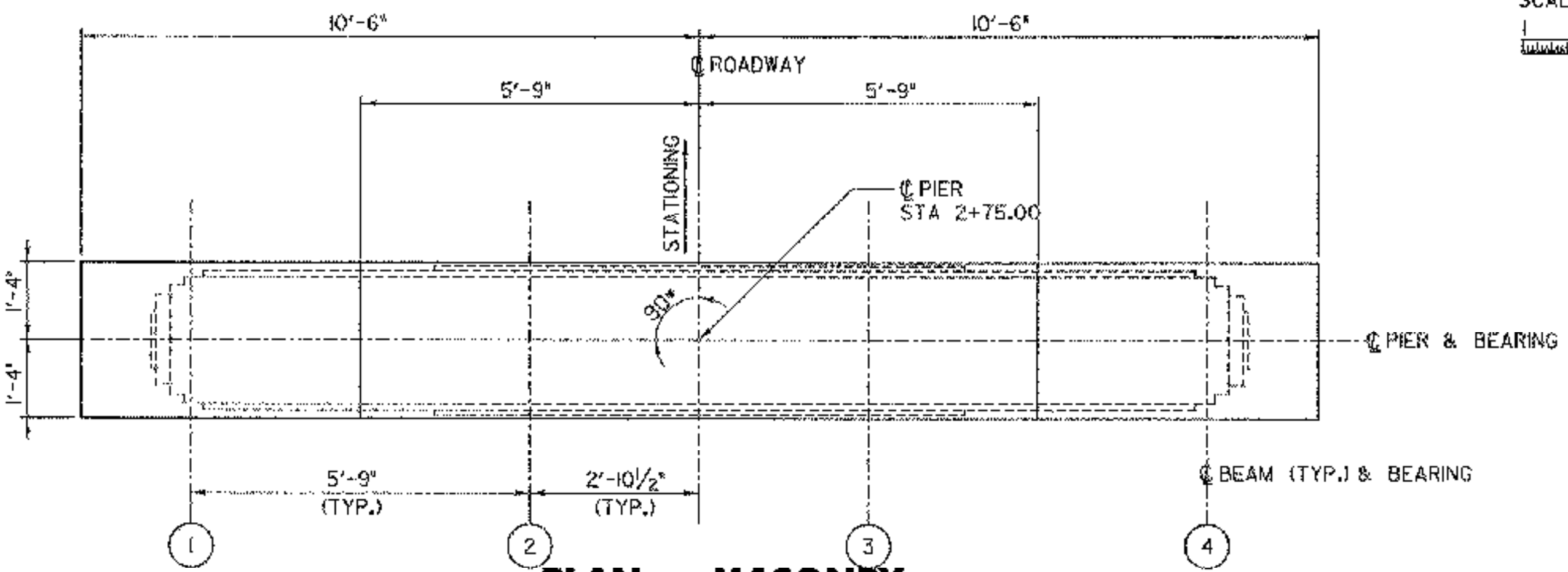
**SECTION A-A**

SCALE 1/2" = 1'-0"  
0 1 2



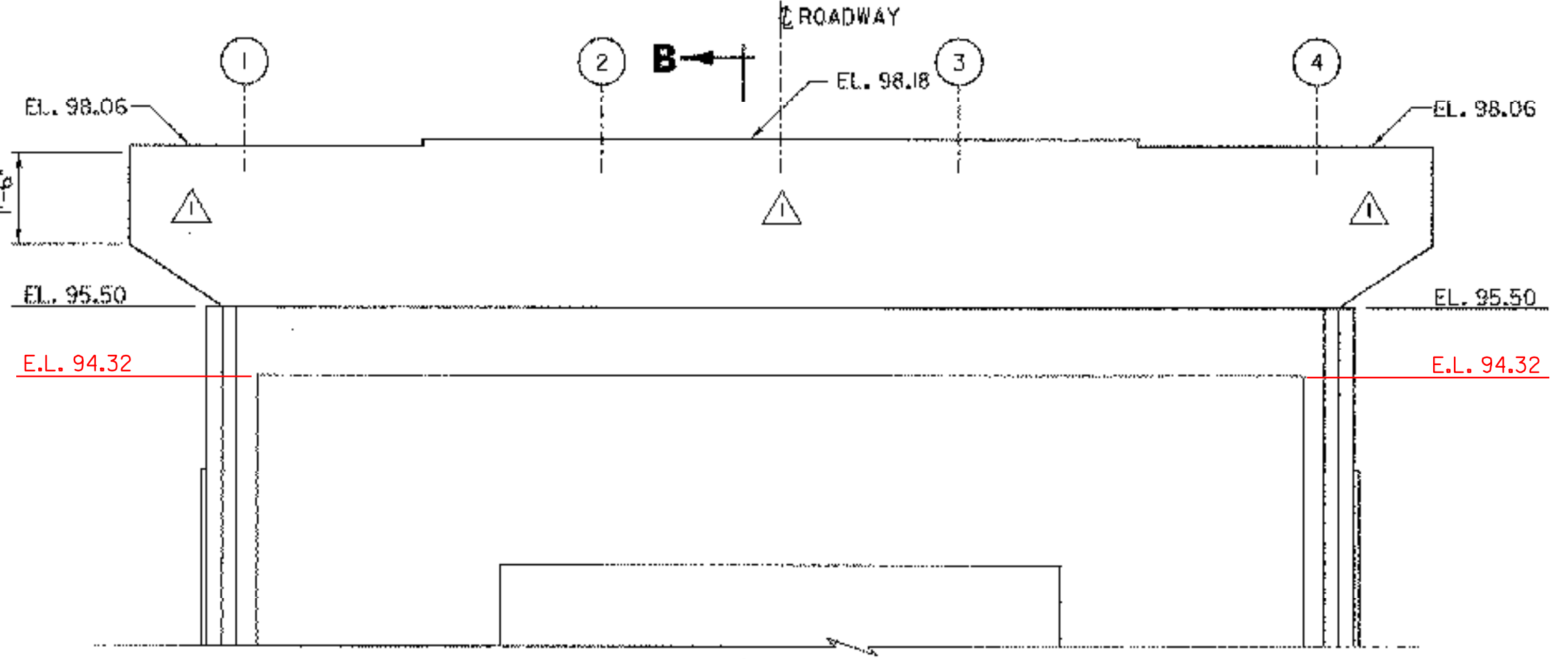
**ELEVATION - REINFORCEMENT**

SCALE 1/2" = 1'-0"  
0 1 2



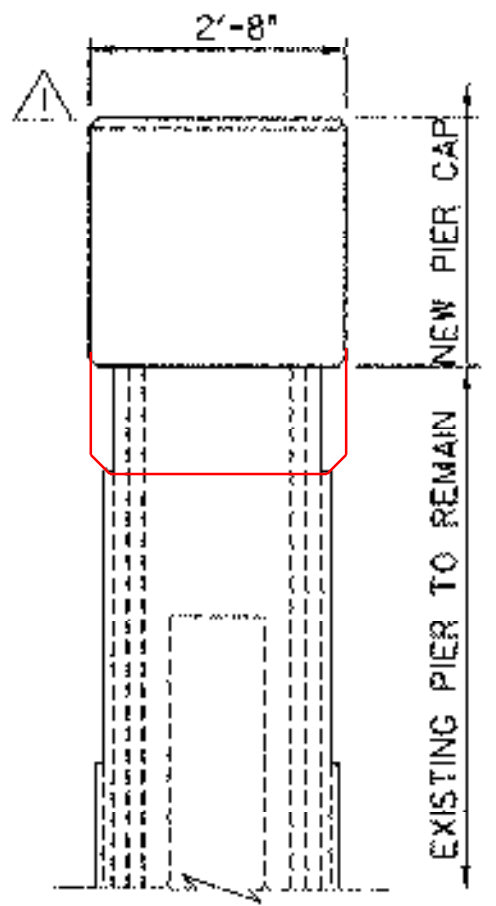
**PLAN - MASONRY**

SCALE 1/2" = 1'-0"  
0 1 2



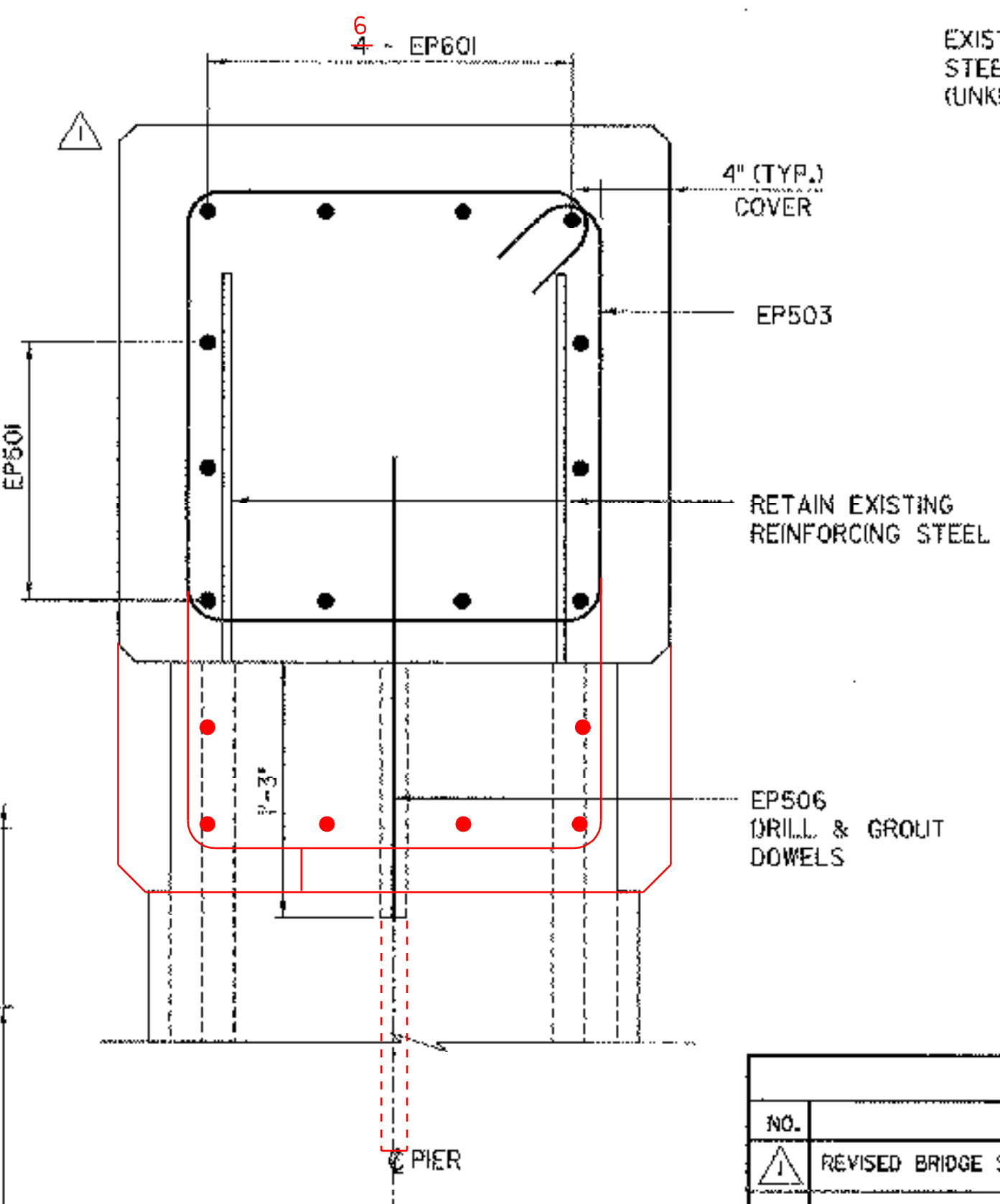
**ELEVATION - MASONRY**

SCALE 1/2" = 1'-0"  
0 1 2



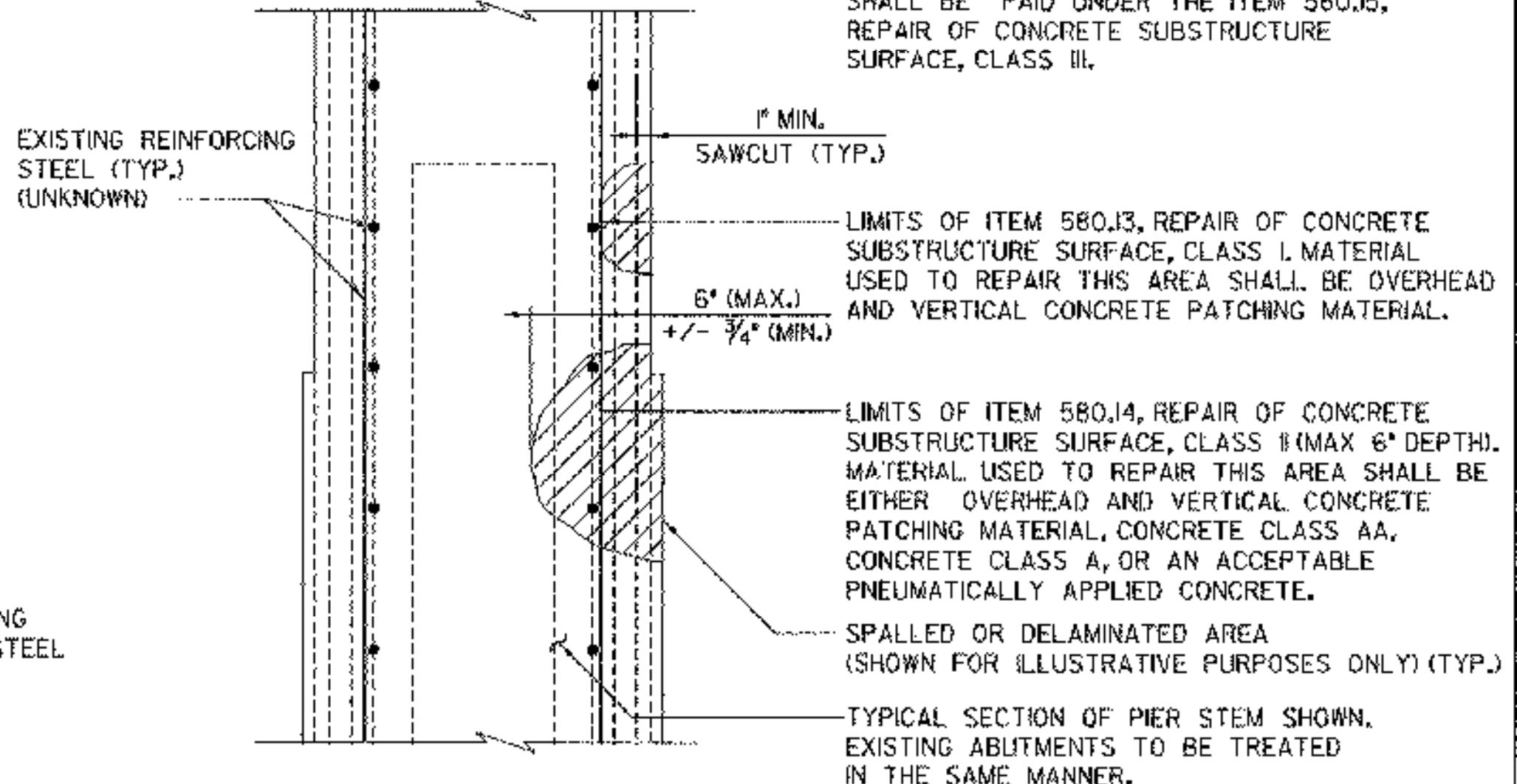
**SECTION B-B**

SCALE 1/2" = 1'-0"  
0 1 2



**SECTION C-C**

SCALE 1/2" = 1'-0"  
0 1 2



**REPAIR OF CONCRETE SUBSTRUCTURE SURFACE CLASS I OR CLASS II**

N.T.S.

■ DENOTES LIMITS OF REMOVAL  
\* APPROXIMATE EXISTING ELEVATION

NOTE:  
REMOVAL OF EXISTING CONCRETE TO A DEPTH GREATER THEN SPECIFIED FOR ITEM 580.14 SHALL BE PAID UNDER THE ITEM 580.15, REPAIR OF CONCRETE SUBSTRUCTURE SURFACE, CLASS III.

LIMITS OF ITEM 580.13, REPAIR OF CONCRETE SUBSTRUCTURE SURFACE, CLASS I. MATERIAL USED TO REPAIR THIS AREA SHALL BE OVERHEAD AND VERTICAL CONCRETE PATCHING MATERIAL.

LIMITS OF ITEM 580.14, REPAIR OF CONCRETE SUBSTRUCTURE SURFACE, CLASS II (MAX 6" DEPTH). MATERIAL USED TO REPAIR THIS AREA SHALL BE EITHER OVERHEAD AND VERTICAL CONCRETE PATCHING MATERIAL, CONCRETE CLASS AA, CONCRETE CLASS A, OR AN ACCEPTABLE PNEUMATICALLY APPLIED CONCRETE.

SPALLED OR DELAMINATED AREA (SHOWN FOR ILLUSTRATIVE PURPOSES ONLY) (TYP.)  
TYPICAL SECTION OF PIER STEM SHOWN. EXISTING ABUTMENTS TO BE TREATED IN THE SAME MANNER.

REVISIONS		
NO.	DESCRIPTION	BY & DATE
1	REVISED BRIDGE SEAT ELEVATIONS	APG 2/3/04

**STATE OF VERMONT AGENCY OF TRANSPORTATION**

Town Of	CHESTER	Bridge No.	11
Highway No.	TH 5	Log Sta.	-
CHURCH STREET OVER WILLIAMS RIVER		Surv. Sta.	-

**PIER DETAILS**

Designed By	J. W. KAMB	Drawn By	G. J. WOJCIECHOWSKI
Checked By	J. TUCKER	Date	03/01
		Bridge Design Supervisor	J. TUCKER
		Date	03/01

PROJECT	CHESTER	PROJECT NO.	BHO 1442 (32)
---------	---------	-------------	---------------

I.G.C. Info. ...zj365d19.dgn  
D & K DWG NO. 11362 Sheet 19 of 22



02/10/2004