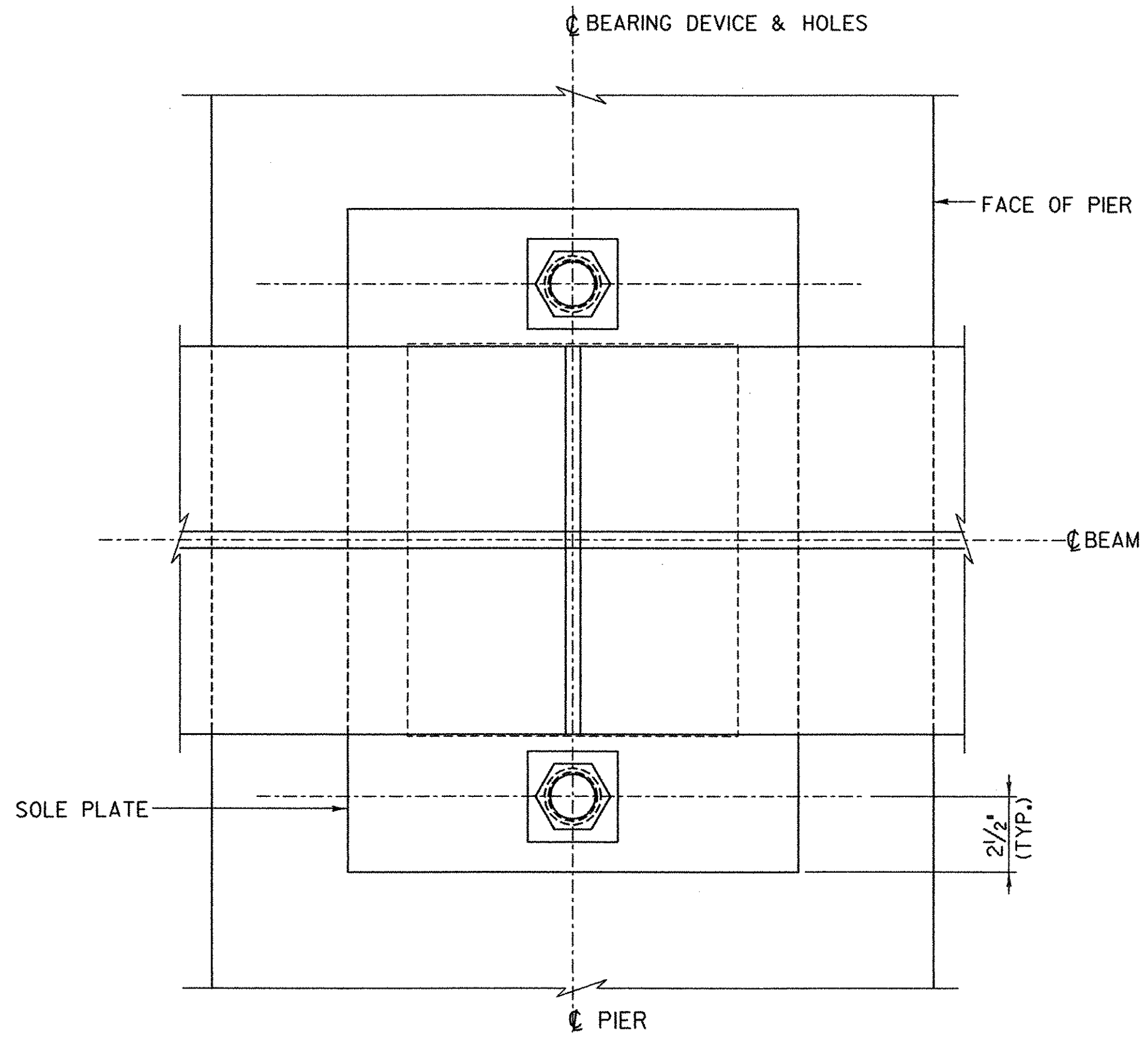
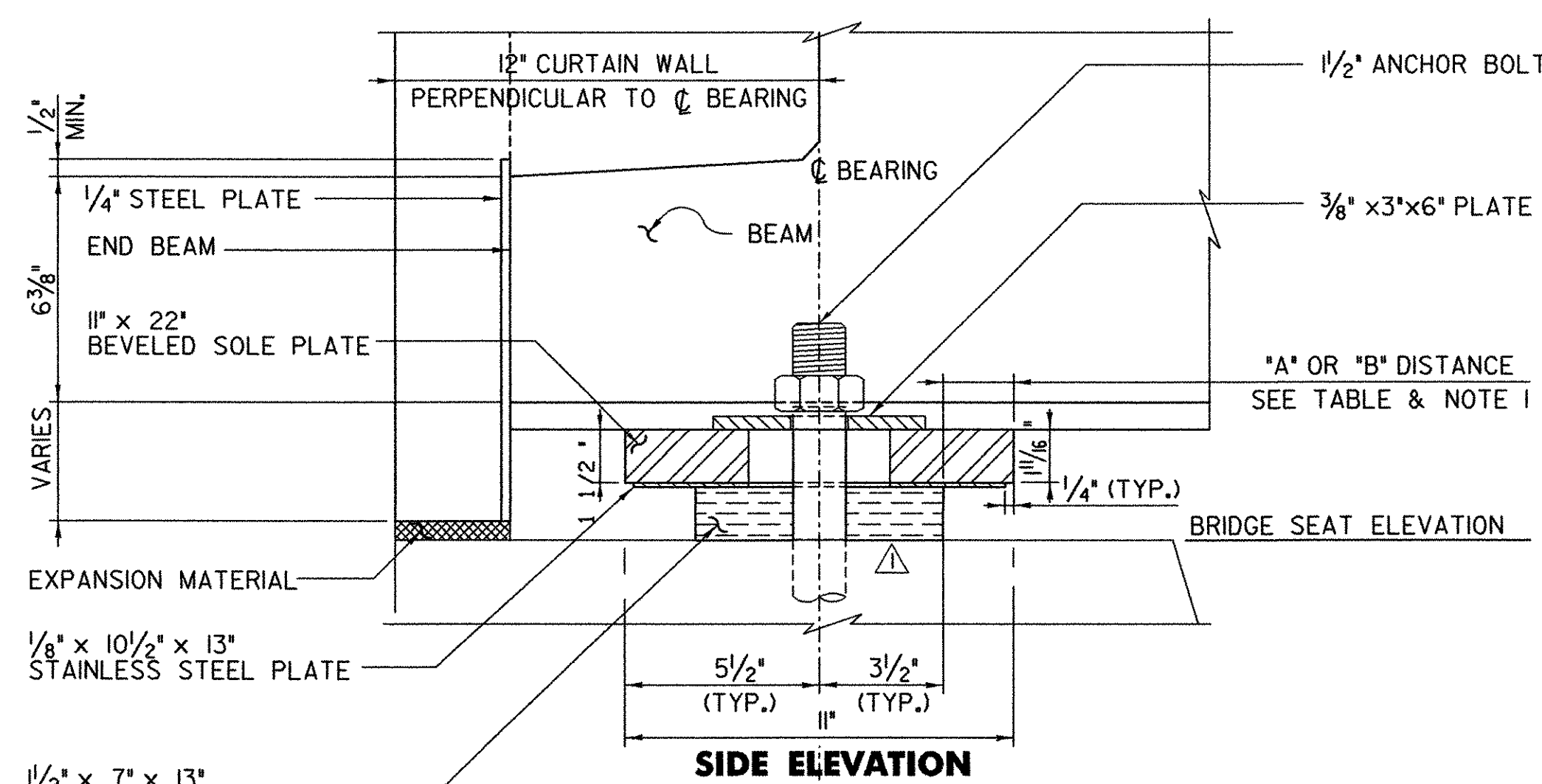


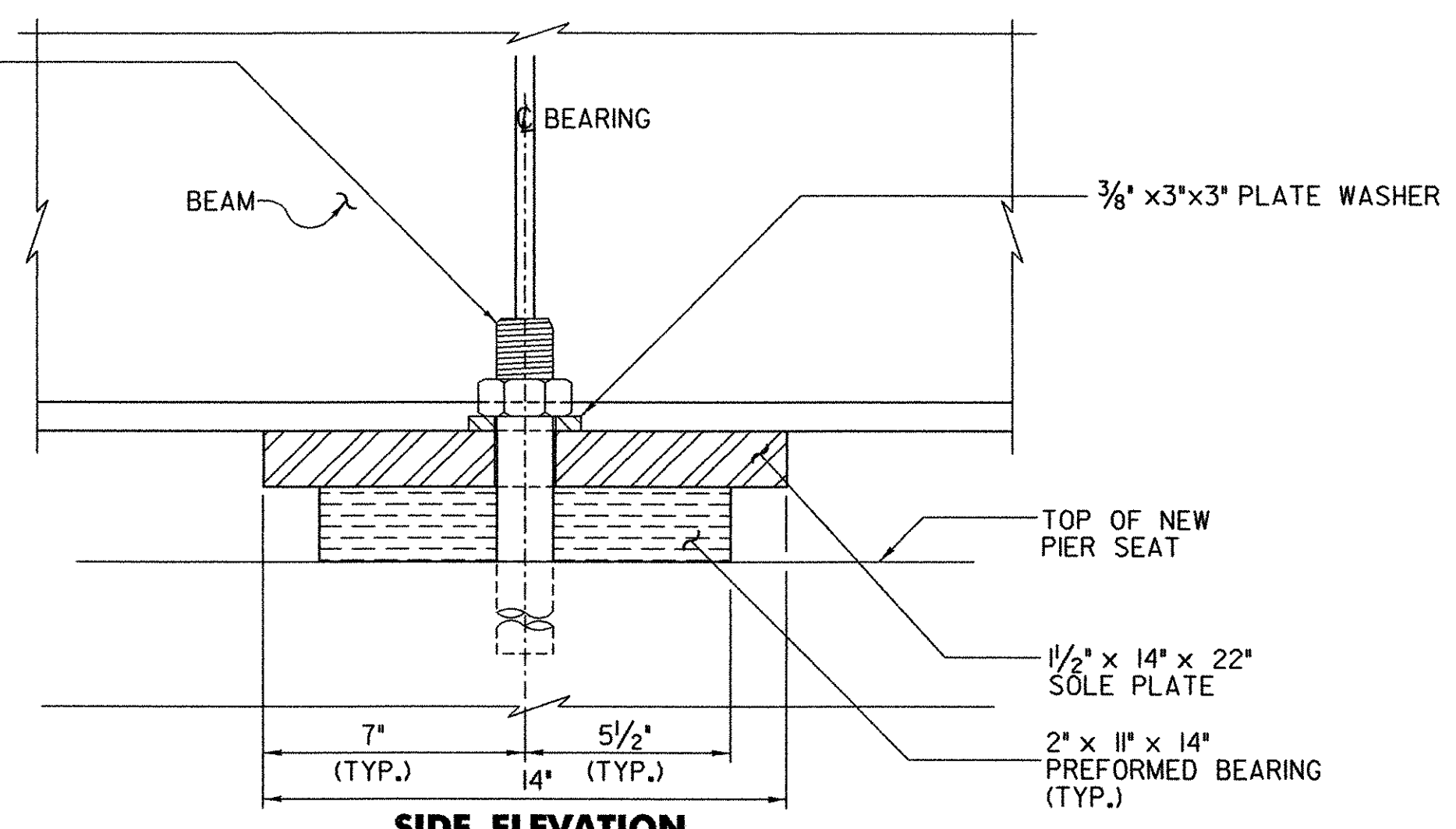
PLAN



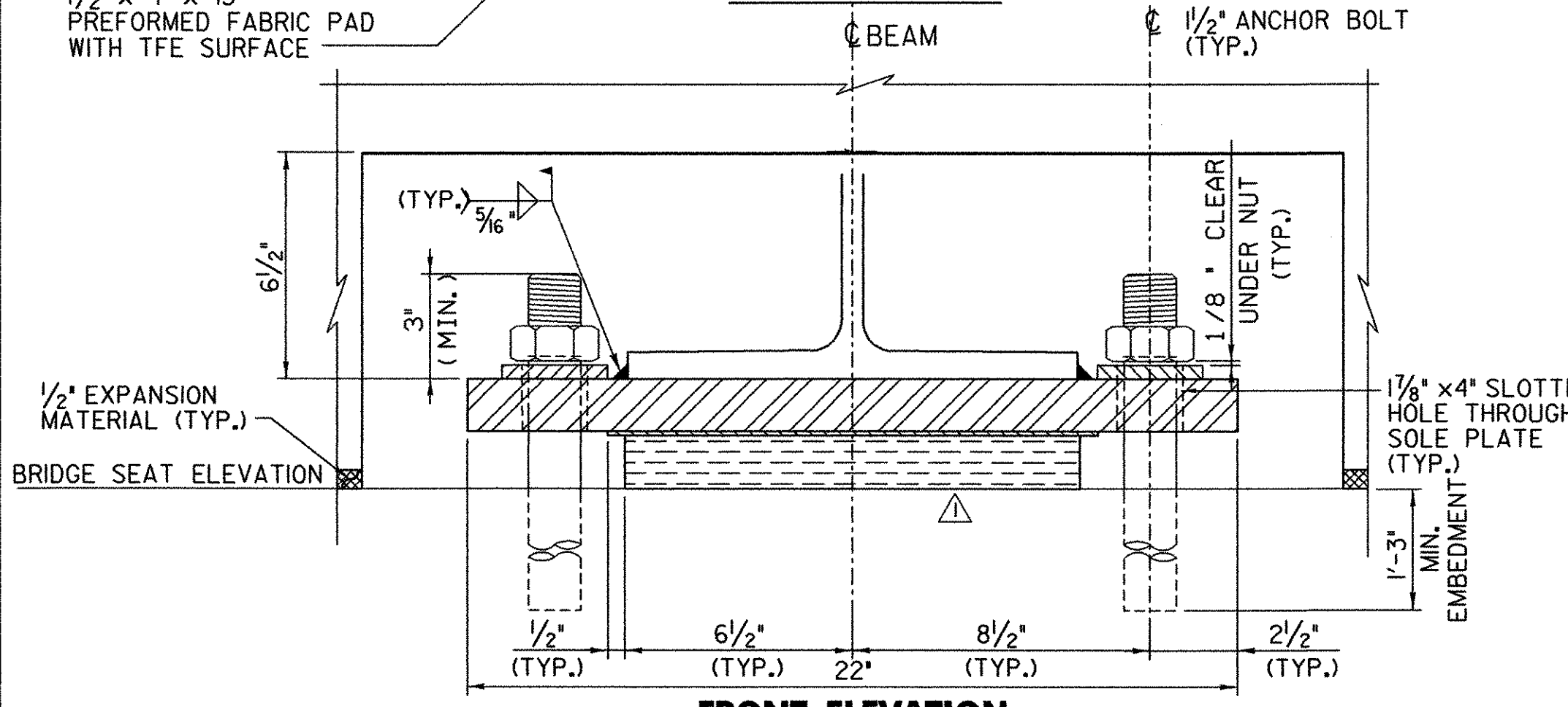
PLAN



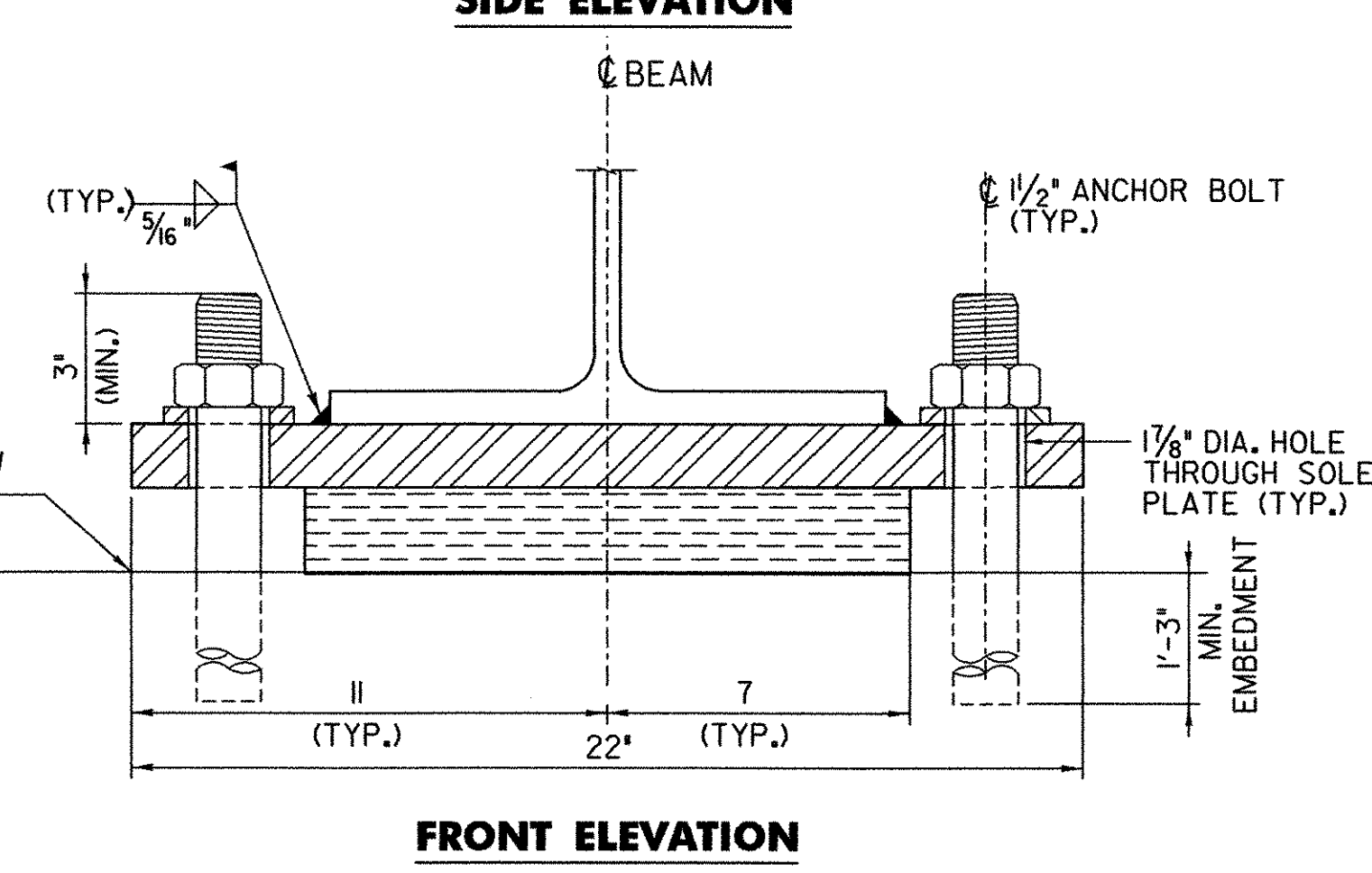
SIDE ELEVATION



SIDE ELEVATION



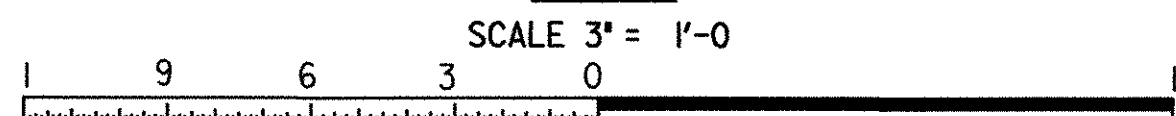
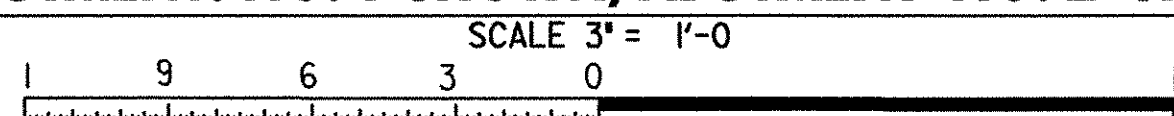
FRONT ELEVATION



FRONT ELEVATION

EXPANSION BEARING DETAILS
(ABUTMENT NO. 1 SHOWN, ABUTMENT NO. 2 SIMILAR)

FIXED BEARING DETAILS
(PIER)



TEMPERATURE ADJUSTMENT TABLE		
TEMP ° F	*A* DIST. (INCHES)	*B* DIST. (INCHES)
120	1 5/8	1 3/4
105	1 3/4	1 7/8
90	1 3/4	1 7/8
75	1 7/8	2
60	1 7/8	2
45	2	2 1/8
30	2 1/8	2 1/8
15	2 1/8	2 1/4
0	2 1/4	2 1/4
-15	2 1/4	2 3/8
-30	2 3/8	2 3/8

NOTE:

1. THE "A" DISTANCE IS THE SOLE PLATE ADJUSTMENT TO BE USED AFTER THE DEAD LOAD IS ADDED TO THE BEAM SELF WEIGHT. THE "B" DISTANCE IS THE SOLE PLATE ADJUSTMENT TO BE USED AFTER BEAM ERECTION AND BEFORE DECK IS POURED. THE DIFFERENCE IS THE ELONGATION OF THE BOTTOM FLANGE DUE TO DEAD LOAD DEFLECTION FROM THE SLAB, BRUSH CURB, BRIDGE RAIL, AND PAVEMENT.
2. SEE SHEET 10 FOR ADDITIONAL BEARING NOTES.

REVISIONS		
NO.	DESCRIPTION	BY & DATE
1	REMOVED SHIM PLATE FROM BEARING ASSEMBLY	APG 2/3/04

**STATE OF VERMONT
AGENCY OF TRANSPORTATION**

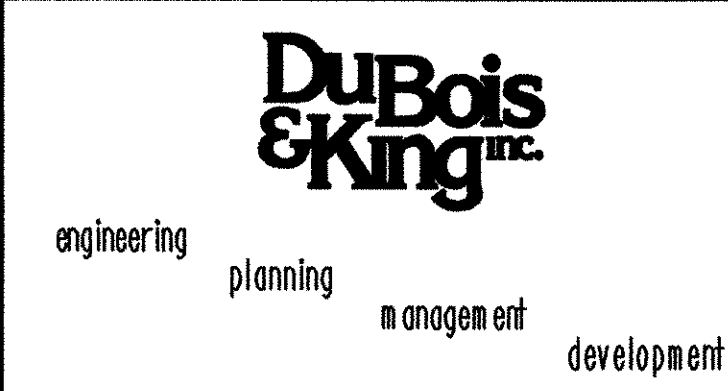
Town Of **CHESTER** Bridge No. **11**
 Highway No. **TH 5** Log Sta. **-**
 Surv. Sta. **-**
CHURCH STREET OVER WILLIAMS RIVER

BEARING DETAILS

Designed By **R. L. JOY** Drawn By **G. J. WOJCIECHOWSKI**
 Checked By **J. TUCKER** Date **03/01** Bridge Design Supervisor
 J. TUCKER Date **03/01**

PROJECT **CHESTER** PROJECT NO. **BHO 1442 (32)**

I.G.C. Info. **...zj365dl6.dgn**
 D & K DWG NO. **11359** Sheet **16** of **22**



02/10/2004