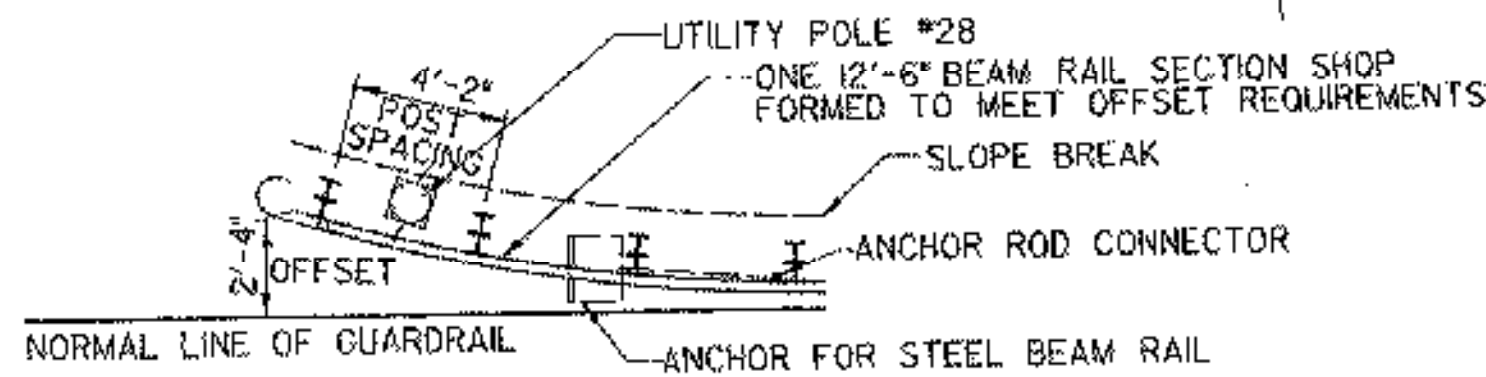
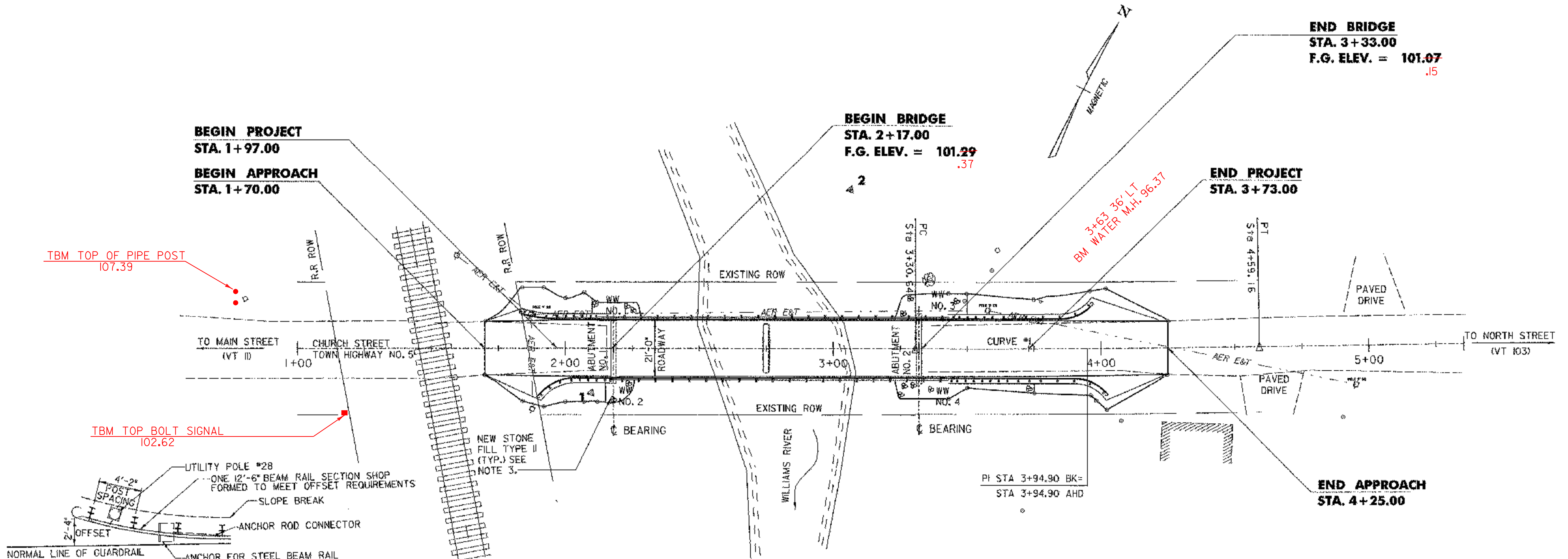


FINAL GRADE RAISED 1" TO OBTAIN 1" MIN BEAM HAUNCH



**ANCHOR FOR STEEL BEAM GUARDRAIL**

STA 1+86.70 LT      STA 3+90.50 LT  
STA 1+97.40 RT      STA 3+95.80 RT

**COLD PLANING-BITUMINOUS PAVEMENT**

STA 1+70.00 TO STA 1+85.00  
STA 3+95.00 TO STA 4+25.00

**REMOVAL AND DISPOSAL OF GUARDRAIL**

32' 1+80.00 STA 1+91.00 TO STA 2+12.00 LT  
18' STA 3+34.00 TO STA 3+51.00 LT 3+52.00  
40' STA 3+34.00 TO STA 3+70.00 RT 3+74.00

**HEAVY DUTY STEEL BEAM GUARDRAIL (MOD. - W/8' POSTS)**

STA 1+82.50 TO STA 2+07.50 LT  
STA 1+89.75 TO STA 2+14.75 RT  
STA 3+47.00 TO STA 3+97.00 LT  
STA 3+46.00 TO STA 4+02.25 RT

**4" WHITE LINES**

STA 1+70.00 TO STA 4+25.00 SOLID RT & LT

**4" YELLOW LINES (DOUBLE CENTERLINE)**

STA 1+70.00 TO STA 4+25.00 SOLID RT & LT

**STONE FILL, TYPE II**

STA 2+15 TO STA 2+25 RT  
STA 2+10 TO STA 2+28 LT  
STA 3+24 TO STA 3+75 RT  
STA 3+24 TO STA 3+50 LT

**CURVE DATA**

CURVE # 1	
Δ	= 0° 57' 50"
R	= 7639.50'
T	= 64.26'
L	= 128.52'
D	= 0° 45' 00"

**NOTES:**

1. THE EXISTING R.O.W. ON CHURCH STREET IS ASSUMED TO BE A 3 ROD (49.5 FEET), CENTERED ON THE EXISTING ROADWAY.
2. THE EXISTING RAILROAD R.O.W IS ASSUMED TO BE 70 FEET, CENTERED ON THE TRACK.
3. NEW STONE FILL, TYPE II SHALL BE PLACED ON SIDE SLOPES AT LOCATIONS SHOWN, SEE DETAIL SHEET 22.
4. THE UTILITY COMPANY SHALL BE CONTACTED IN ADVANCE OF EXCAVATING NEAR UTILITY POLE #28 TO ALLOW TEMPORARY STABILIZATION DURING THE PLACEMENT OF THE GUARDRAIL ANCHOR.

DATUM	
VERTICAL	LOCAL
HORIZONTAL	LOCAL

**LEGEND**

EXISTING EDGE OF RIVER	
EXISTING TRAVELED WAY	
PROPOSED TRAVELED WAY	
ROW	
GUARD RAIL	
CULVERT	
UTILITY POLE	
TELEPHONE POLE	
TREES	
TREE LINE	

REVISIONS		
NO.	DESCRIPTION	BY & DATE

**DuBois & King**  
INC.  
engineering    planning    management    development

<b>STATE OF VERMONT</b>			
<b>AGENCY OF TRANSPORTATION</b>			
Town Of	CHESTER	Bridge No.	11
Highway No.	TH 5	Log Sta.	-
CHURCH STREET OVER WILLIAMS RIVER		Surv. Sta.	-
<b>PLAN SHEET</b>			
Designed By	B. C. AUSTIN	Drawn By	G. J. WOJCIECHOWSKI
Checked By	J. TUCKER	Date	03/01
PROJECT		Bridge Design Supervisor	Date
CHESTER		J. TUCKER	03/01
PROJECT NO.		PROJECT NO.	
BHO 1442 (32)		BHO 1442 (32)	
L.G.C. Info. ...ZJ365105.dgn			
D & K DWG NO.	11348	Sheet	5 of 22

02/03/2004