

LAYOUT COORDINATES			
STA. 1+00.00	POB	N 9981.94	E 9890.62
STA. 2+17.00	BEGIN BRIDGE	N 10018.10	E 10001.90
STA. 3+30.18	PC	N 10053.21	E 10109.97
STA. 3+33.00	END BRIDGE	N 10053.94	E 10112.22
STA. 3+94.90	PI	N 10073.07	E 10171.09
STA. 4+59.61	PT	N 10093.96	E 10231.86
STA. 5+35.40	POE	N 10118.73	E 10303.97
HVCTRL 1	CONTROL POINT	N 10000.00	E 10000.00
HVCTRL 2	CONTROL POINT	N 10101.85	E 10068.70

BOB PANTO
805 CHURCH ST
CHESTER VT 05143
802-875-3476

BENCHMARK #2
 SPIKE IN POWER POLE #28
 ELEVATION 102.6860

BENCHMARK #1
 TOP OF SPINDLE NUT AT ARROW
 ON FIRE HYDRANT
 ELEVATION 105.5580

BENCHMARK #3
 TOP OF CONCRETE BOUND
 ELEVATION 98.3100

BEGIN APPROACH
STA. 1+70.00

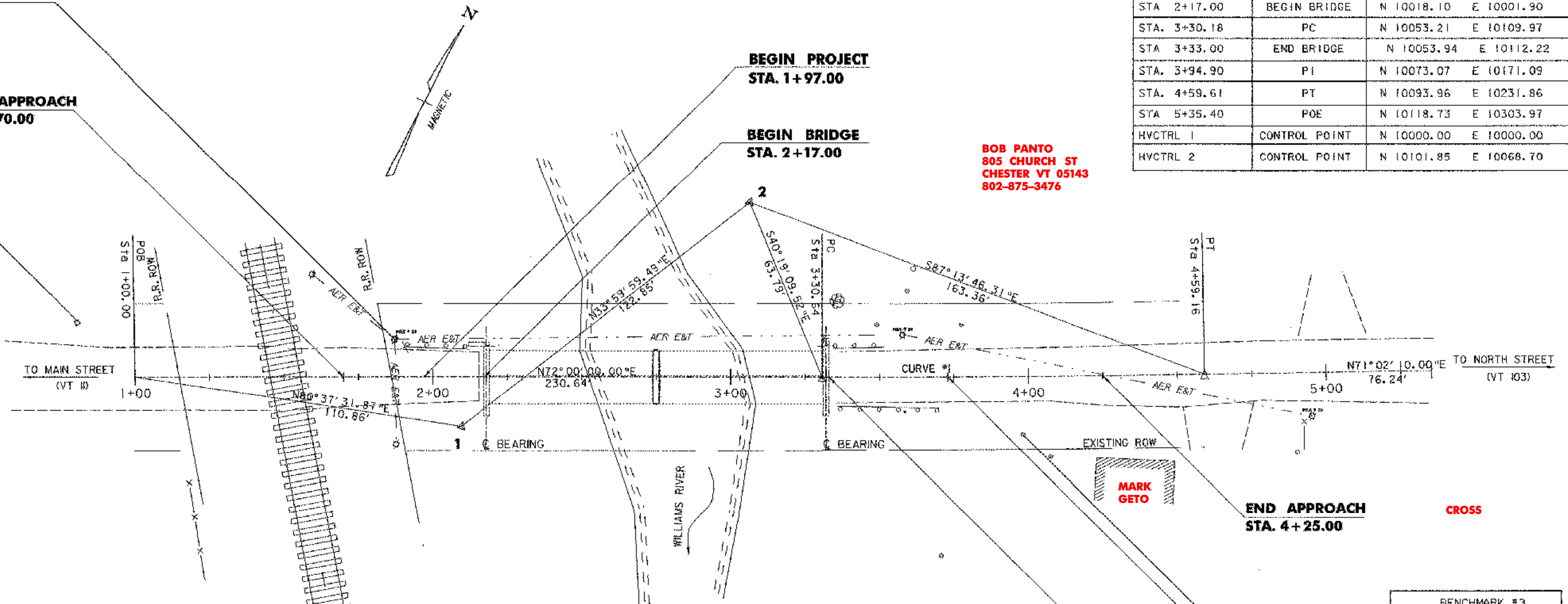
BEGIN PROJECT
STA. 1+97.00

BEGIN BRIDGE
STA. 2+17.00

END APPROACH
STA. 4+25.00

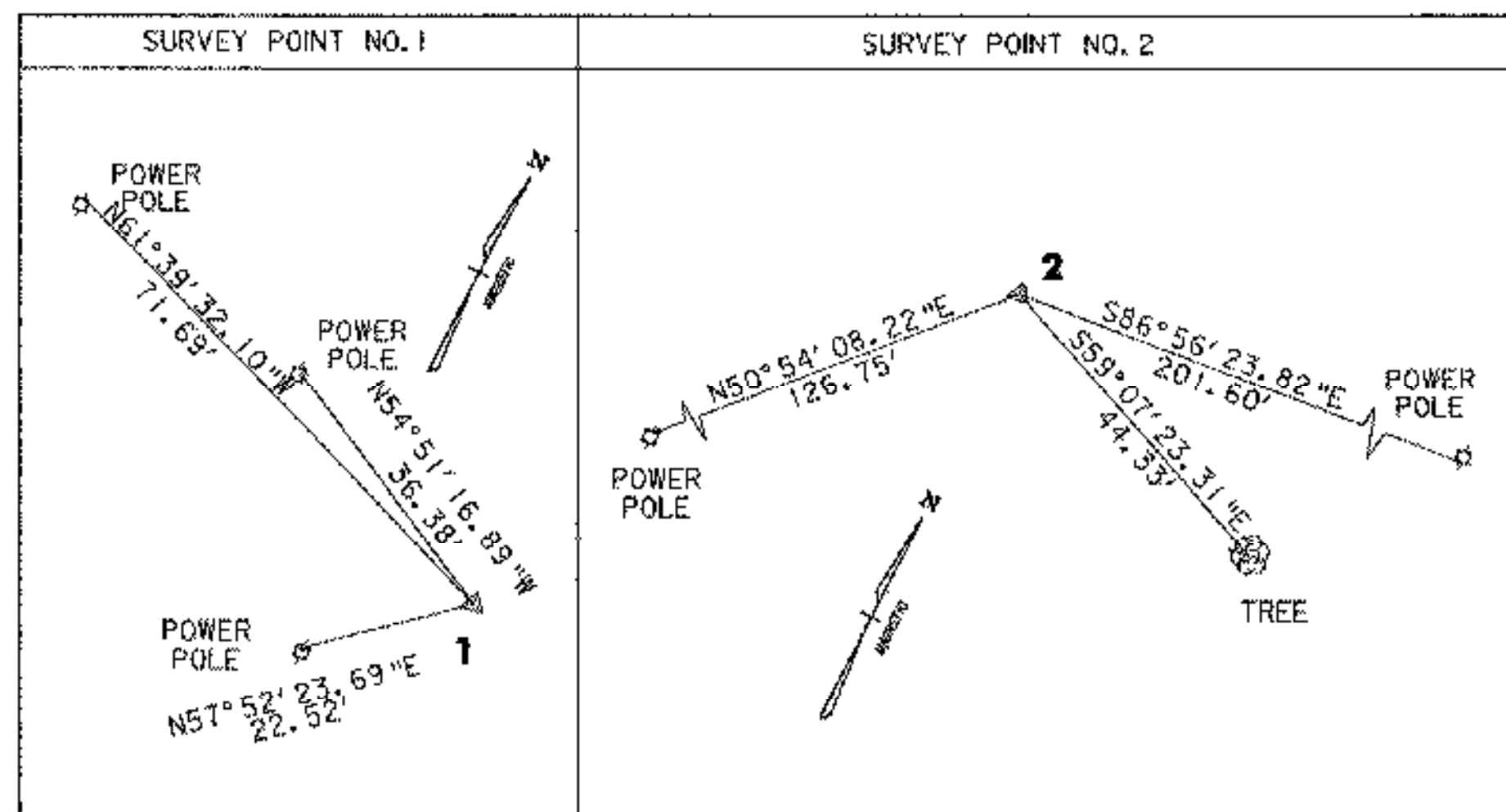
END PROJECT
STA. 3+73.00

END BRIDGE
STA. 3+33.00



PLAN

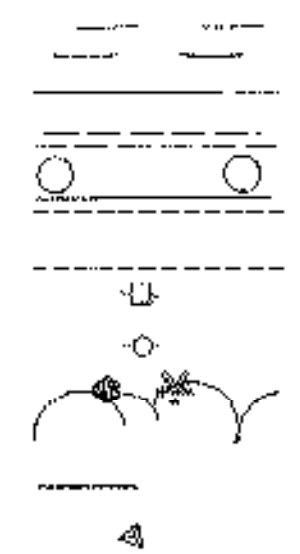
TIES



DATUM
 VERTICAL LOCAL
 HORIZONTAL LOCAL

LEGEND

- EXISTING EDGE OF RIVER
- EXISTING TRAVELED WAY
- EXISTING GUARD RAIL
- CULVERT
- UTILITY POLE
- TELEPHONE POLE
- TREES
- TREE LINE
- OVERHEAD LINES
- SURVEY POINT



02/03/2004

CURVE DATA

CURVE # 1
Δ = 0°57'50"
R = 7639.50'
T = 64.26'
L = 128.52'
D = 0°45'00"

REVISIONS			STATE OF VERMONT AGENCY OF TRANSPORTATION	
NO.	DESCRIPTION	BY & DATE	Town Of	CHESTER
			Highway No.	TH 5
			CHURCH STREET OVER WILLIAMS RIVER	
			Bridge No.	11
			Log Sta.	-
			Surv. Sta.	-
TIE SHEET				
Designed By G. J. WOJCIECHOWSKI		Drawn By G. J. WOJCIECHOWSKI		
Checked By	Date	Bridge Design Supervisor		
J. TUCKER	03/01	J. TUCKER	Date 03/01	
PROJECT		PROJECT NO.		
CHESTER		BHO 1442 (32)		
I.G.C. Info. ...zj365104.dgn				
D & K DWG NO.	11347	Sheet 4 of 22		

