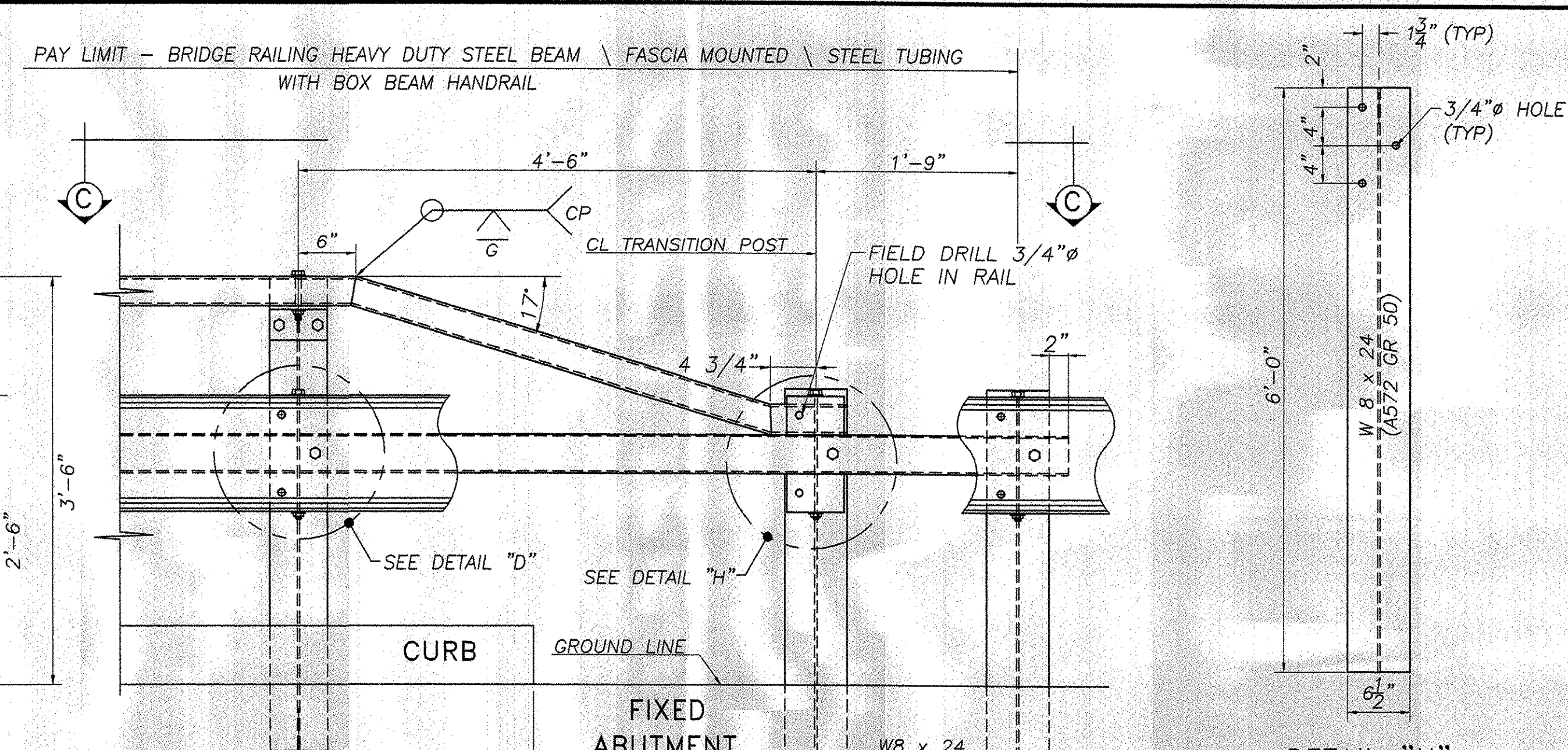
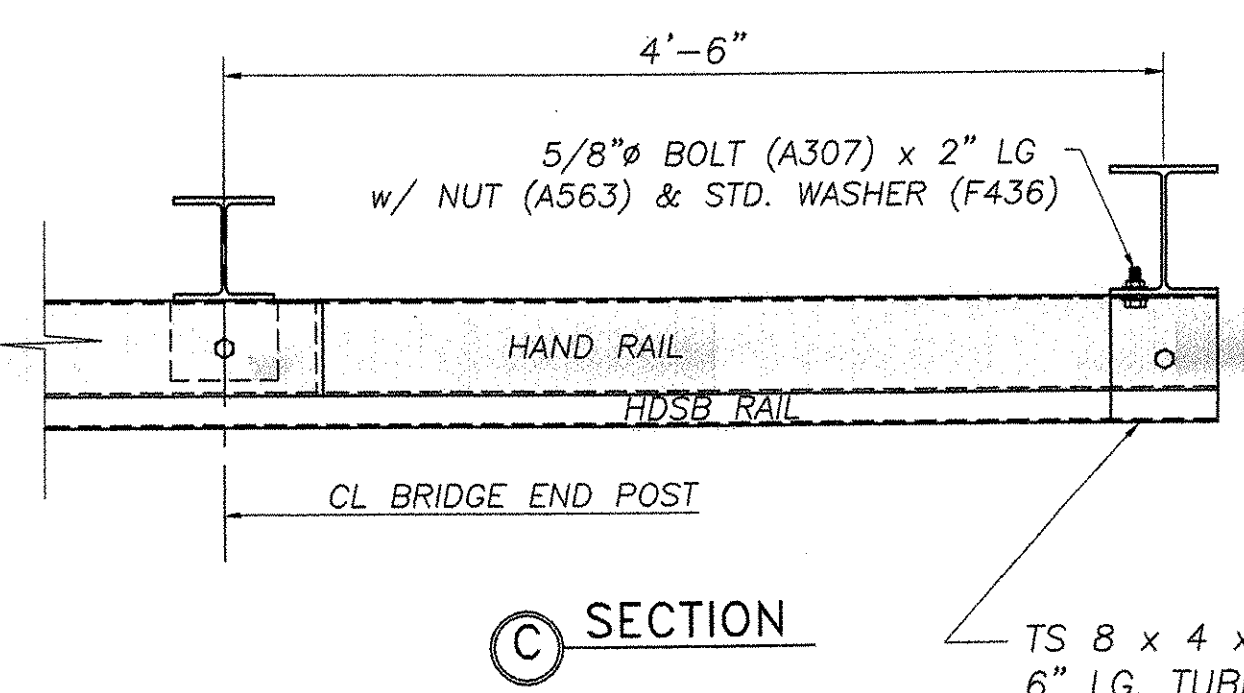


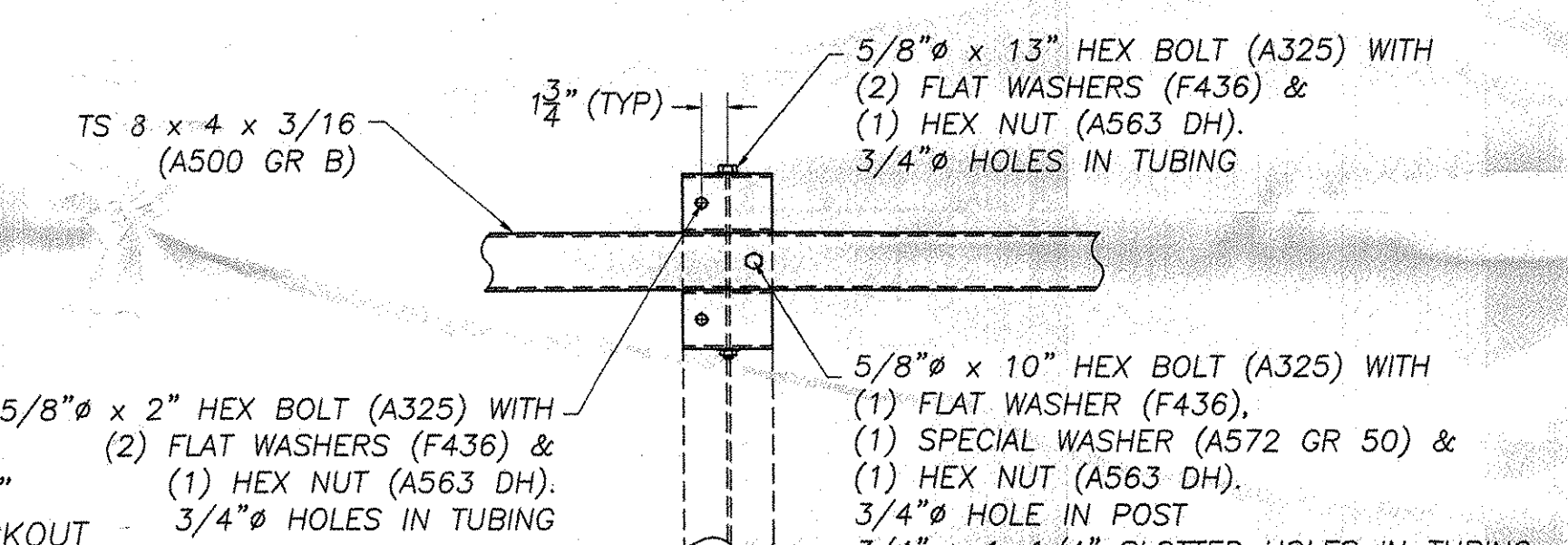
RAILING ELEVATION VIEW
(SHOWN LOOKING (N) FROM CL OF ROADWAY)



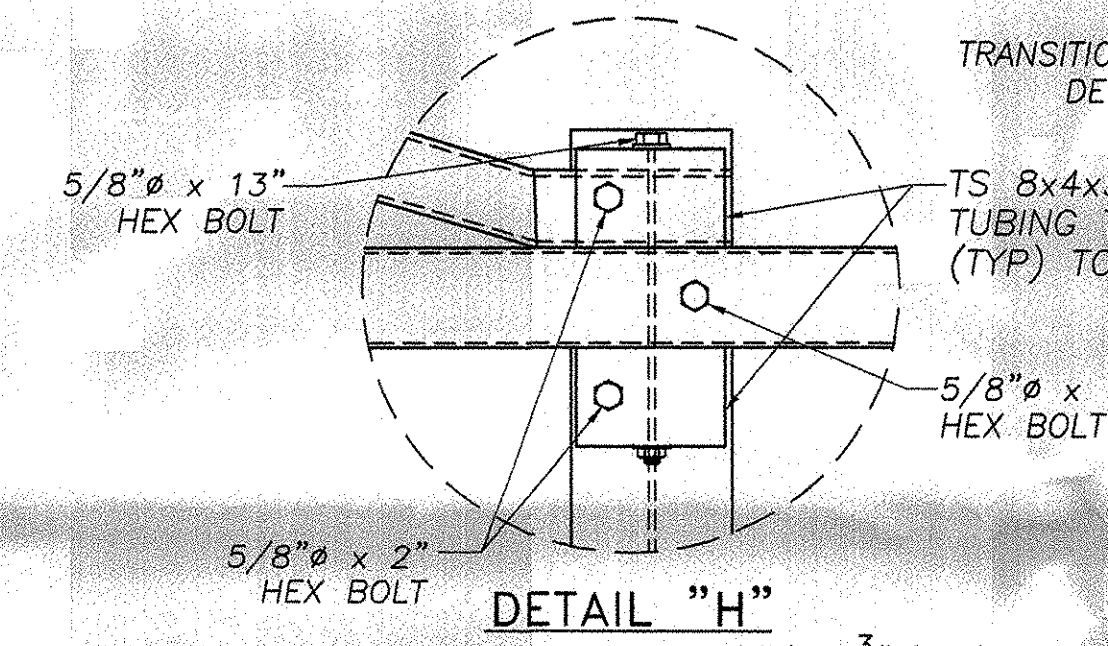
DETAIL "H" TRANSITION POST
W8x24 (A572 GR 50)



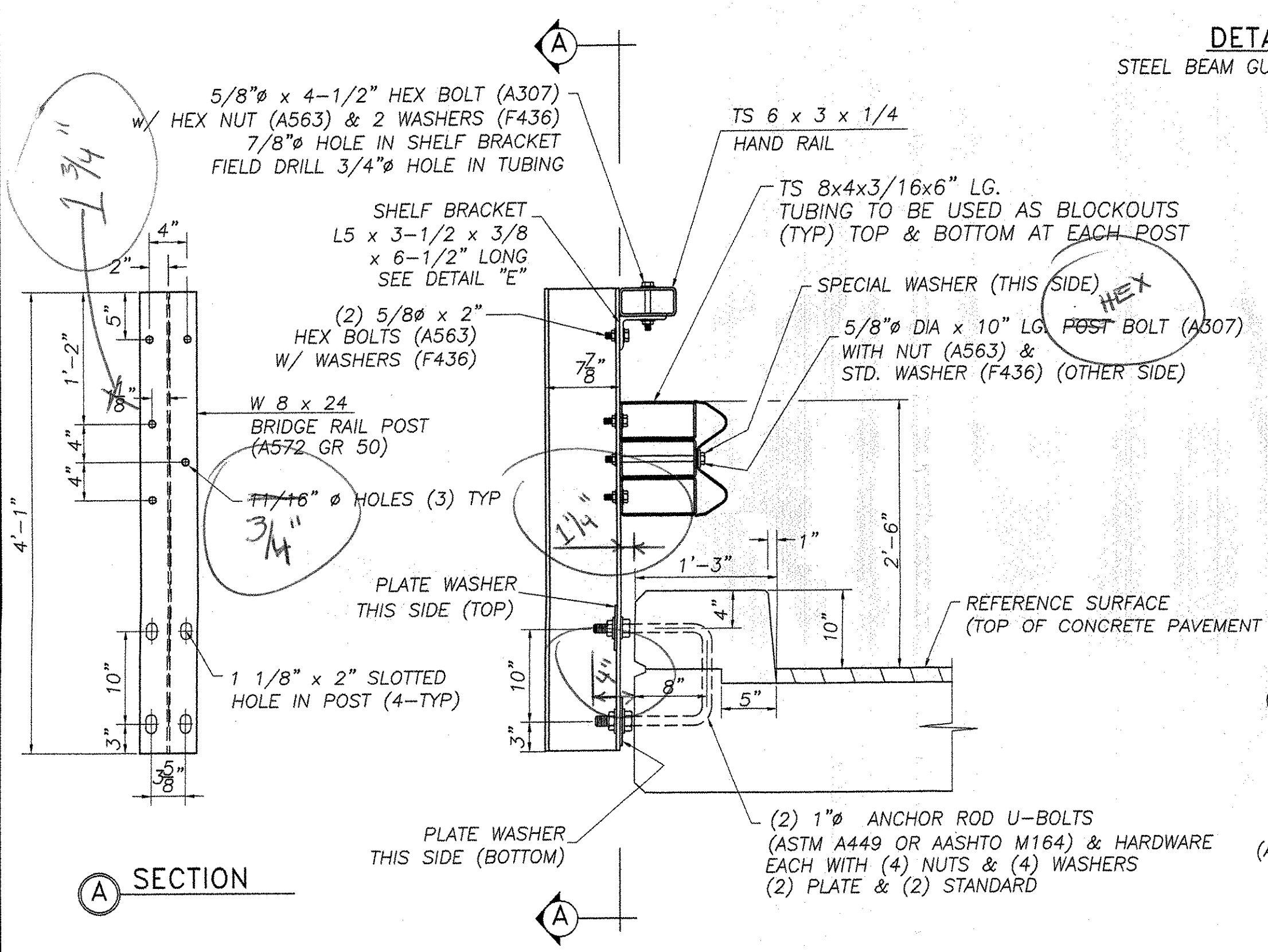
SECTION C



DETAIL "D"
STEEL BEAM GUARD RAIL NOT SHOWN

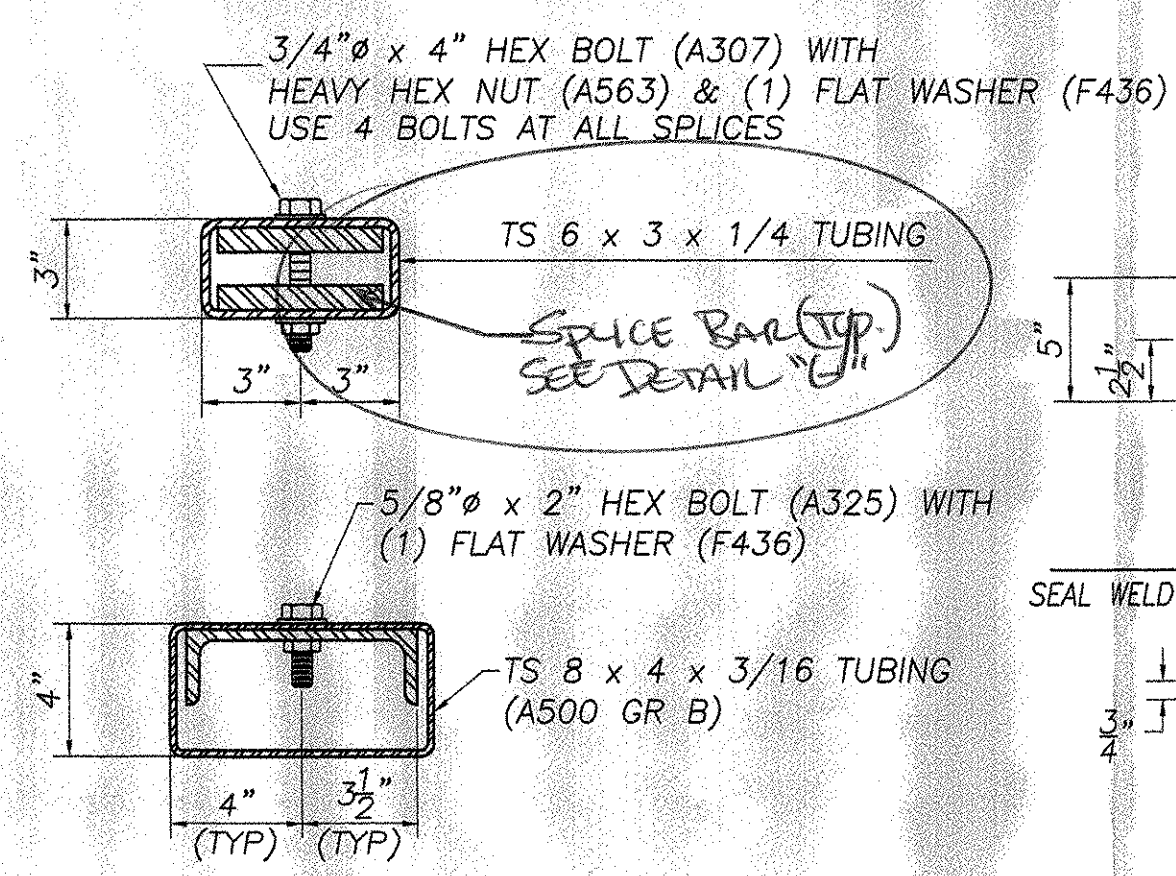


DETAIL "H" SHELF BRACKET

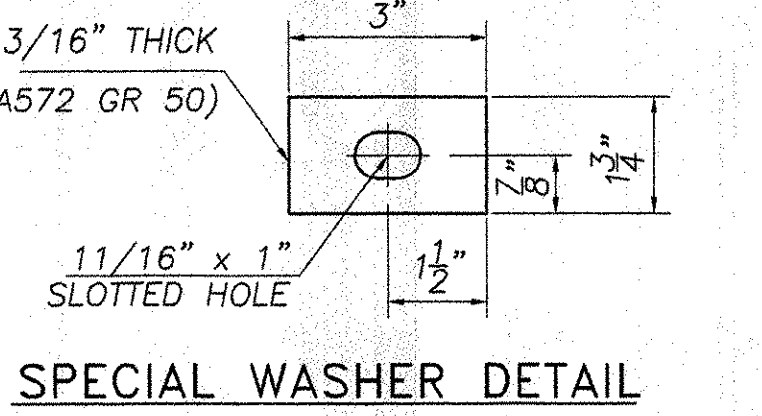


SECTION A

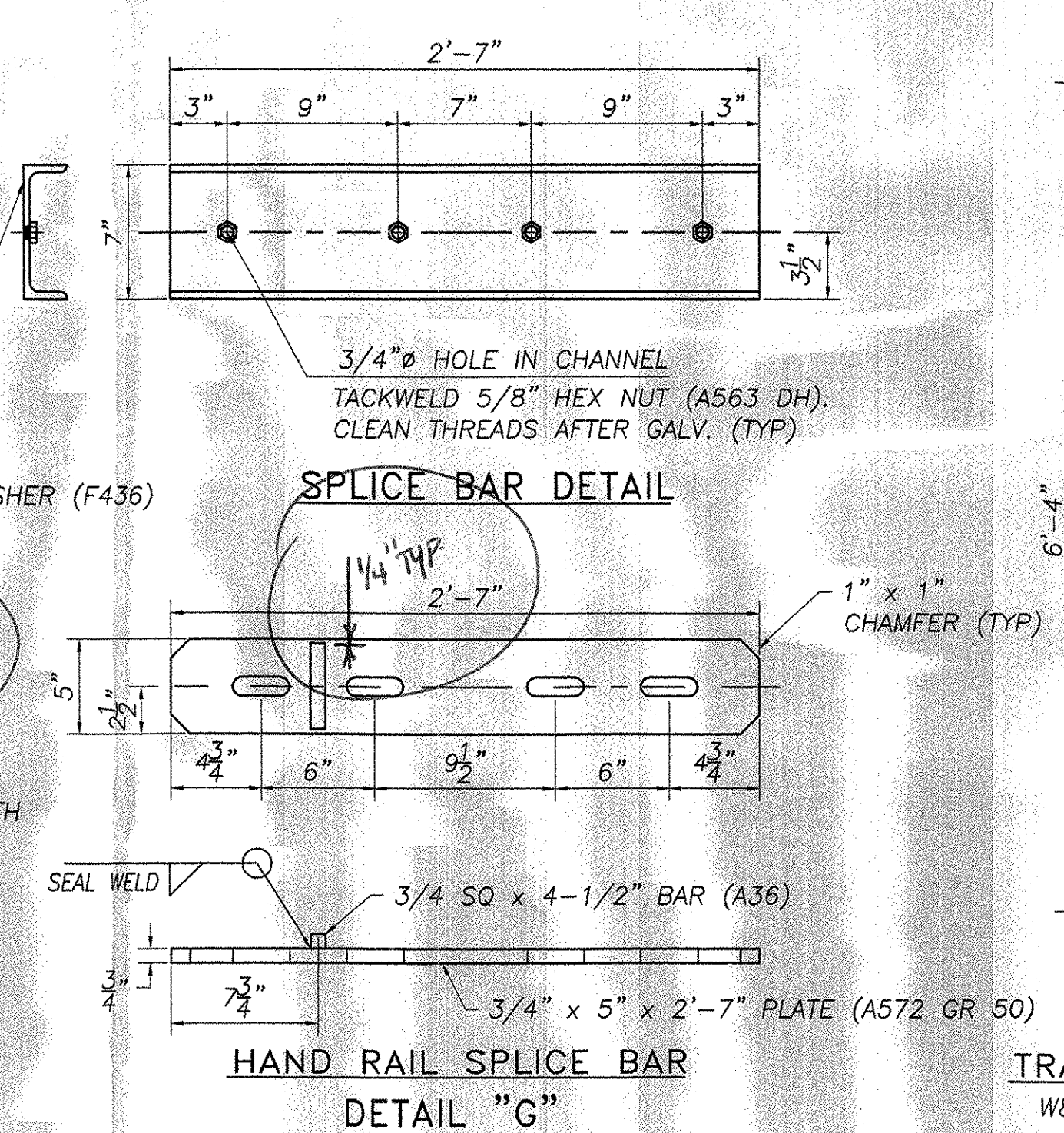
FASCIA MOUNTED POST WITH CURB
W 8 x 24 (A572 GR 50)



PARTIAL SECTION B
SHOWING HAND RAIL TUBE, BRIDGE RAIL TUBE & SPLICE BARS



SPECIAL WASHER DETAIL



HAND RAIL SPLICE BAR DETAIL "G"

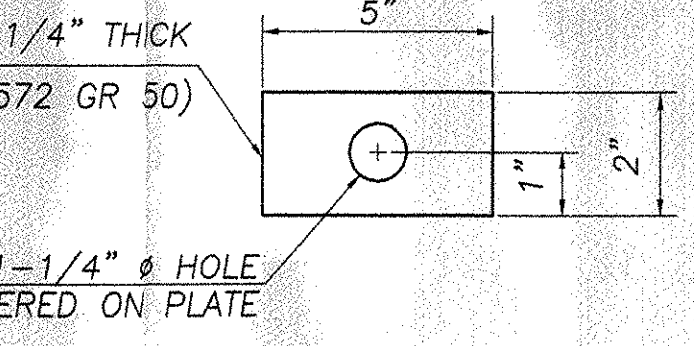


PLATE WASHER DETAIL

REVISIONS		
No.	Remarks	Date
0	Initial submittal	5/21/04

GENERAL ERECTION NOTES

1. Heavy duty steel beam guard rail shall conform to VT. specification 732. AASHTO M180 B2
2. Structural steel tubing shall conform to VT. specification 732. ASTM A500 gr B
3. Anchor bolts, nuts and washers shall be galvanized in accordance with AASHTO M 232 and shall conform to VT. specification 714 unless otherwise noted.
4. Bridge rail posts, special washers, splice bars and plate washers shall conform to AASHTO M 223 / M 223M and shall be galvanized after fabrication in accordance with AASHTO M 111. Prior to galvanizing all corners and edges of steel plates, shapes, etc., shall be ground to a 1/16" radius.
5. See standard drawing G-1 and G-1d for additional details concerning guard rail.
6. See standard drawing SB-R6-B2 for approach rail details and for information relative to schedule I and schedule II. All approach rail shall be heavy duty steel beam guard rail. Also see Std. Dwg. SB-R6-B2 for handrail details (except end details) if hand rail is required.
7. All posts shall be set normal to grade.
8. Splices for the steel beam guard rail shall lap in the direction of traffic.
9. See Standard drawing G-1 for details of delineators. A delineator shall be located at every fifth post. Payment shall be subsidiary to other items.
10. A railing joint splice shall be provided at each superstructure expansion joint.
11. All field cut or drilled areas shall be coated with zinc rich paint.
12. For radii less than 950 feet, the steel tubing shall be shop bent to fit the applicable curve.
13. The drop-weight tear test in section 732 shall not apply to the structural tubing on this standard.
14. All bolts and related hardware shall conform to AASHTO M164 type 1 bolts, hot dipped or mechanically galvanized per specification.

ACCEPTED
 REJECTED AS CORRECTED
 REJECTED, REVISE AND RESUBMIT
 REJECTED, UNACCEPTABLE

Checking for conformance with the design concept of the project and compliance with the information given in the Contract documents. The Engineer assumes no liability for errors or omissions that may be contained herein. The Contractor, by preparing and submitting these documents, verifies their suitability as stipulated on the Contractor's Shop Drawing Stamp.

Date: 6/16/04
 DUBOIS AND KING
 by: JCA

HIGHWAY SAFETY CORP.
 GLASTONBURY, CT

ITEM 525.43 STEEL BRIDGE RAIL - HDSB W/HANDRAIL
 TOWN OF BRATTLEBORO, WINDHAM COUNTY
 TH 378 (WILLIAMS ST.) OVER WHESTONE BROOK
 BRIDGE No. 34
 PROJECT No. BHF 2000(22)

DRAWN: MHM
 CHECKED: [Signature]
 DATE: 5/21/04
 SCALE: NONE
 HSC REFERENCE NO.: 1448
 SIZE: D REVISION: 0
 SHEET NO.: 3 of 3

GENERAL CONTRACTOR: [Blank]
 SUB CONTRACTOR: F.R. LAFAYETTE, INC.