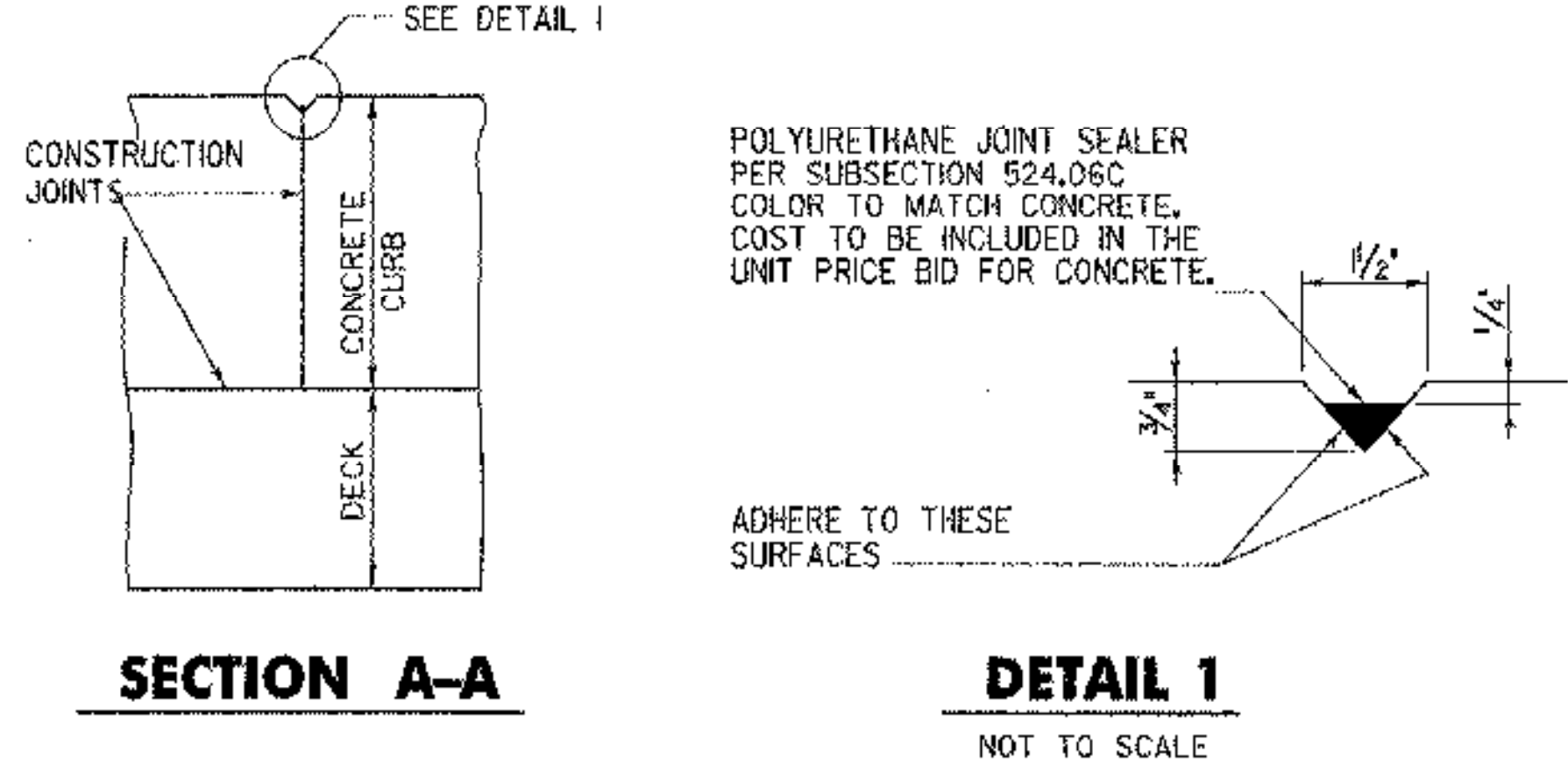
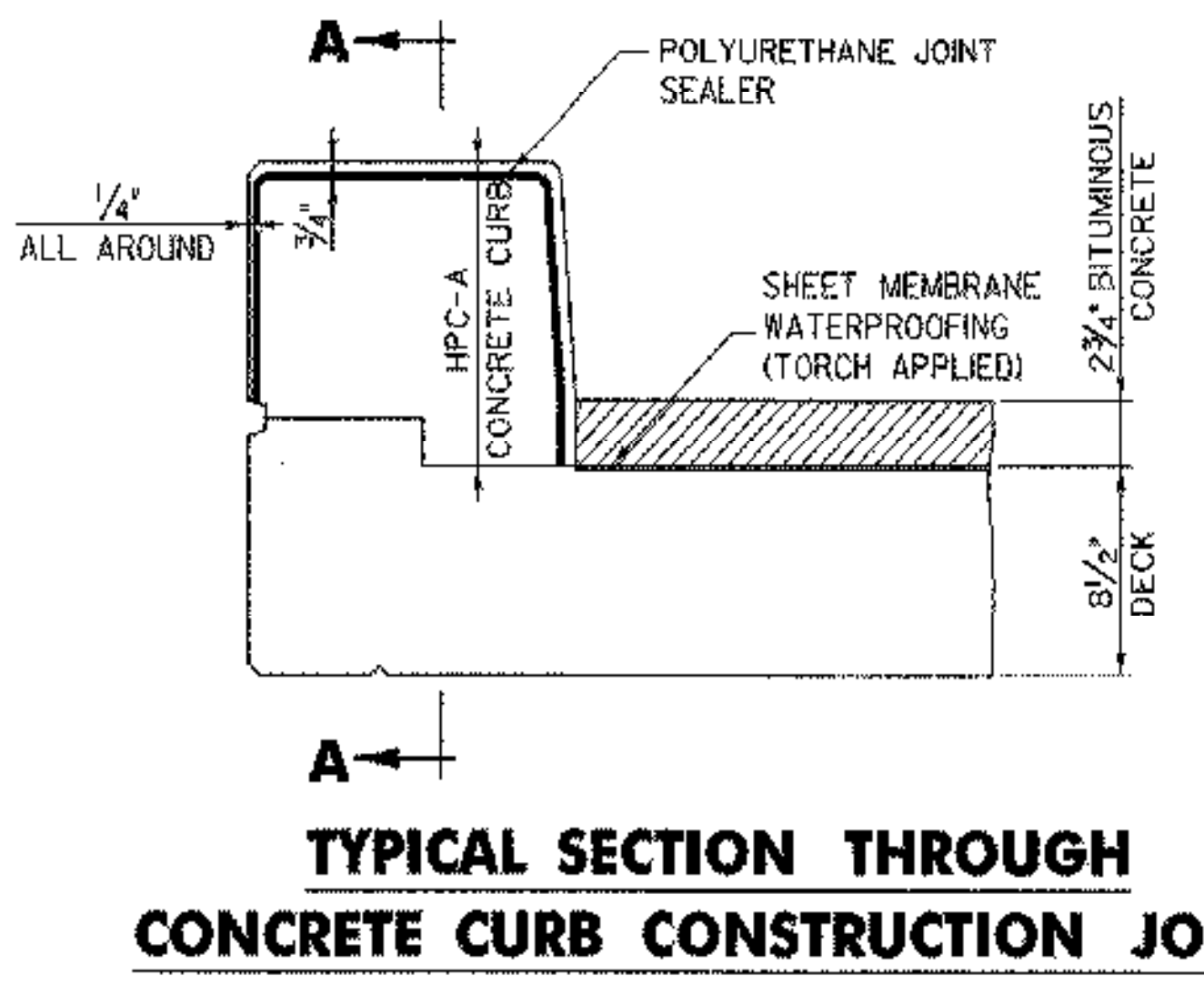
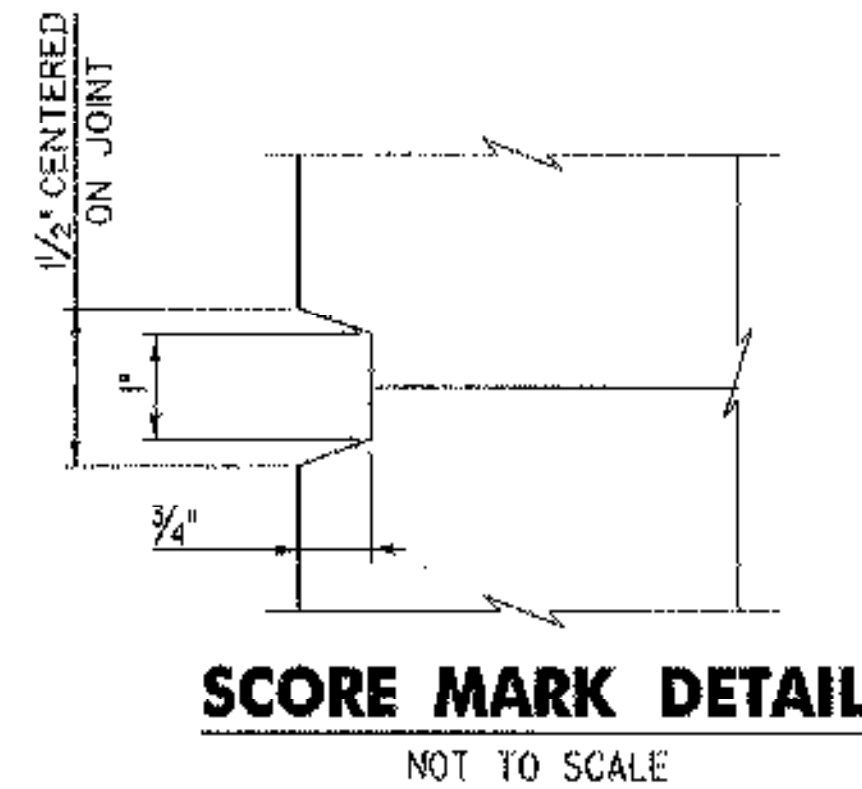
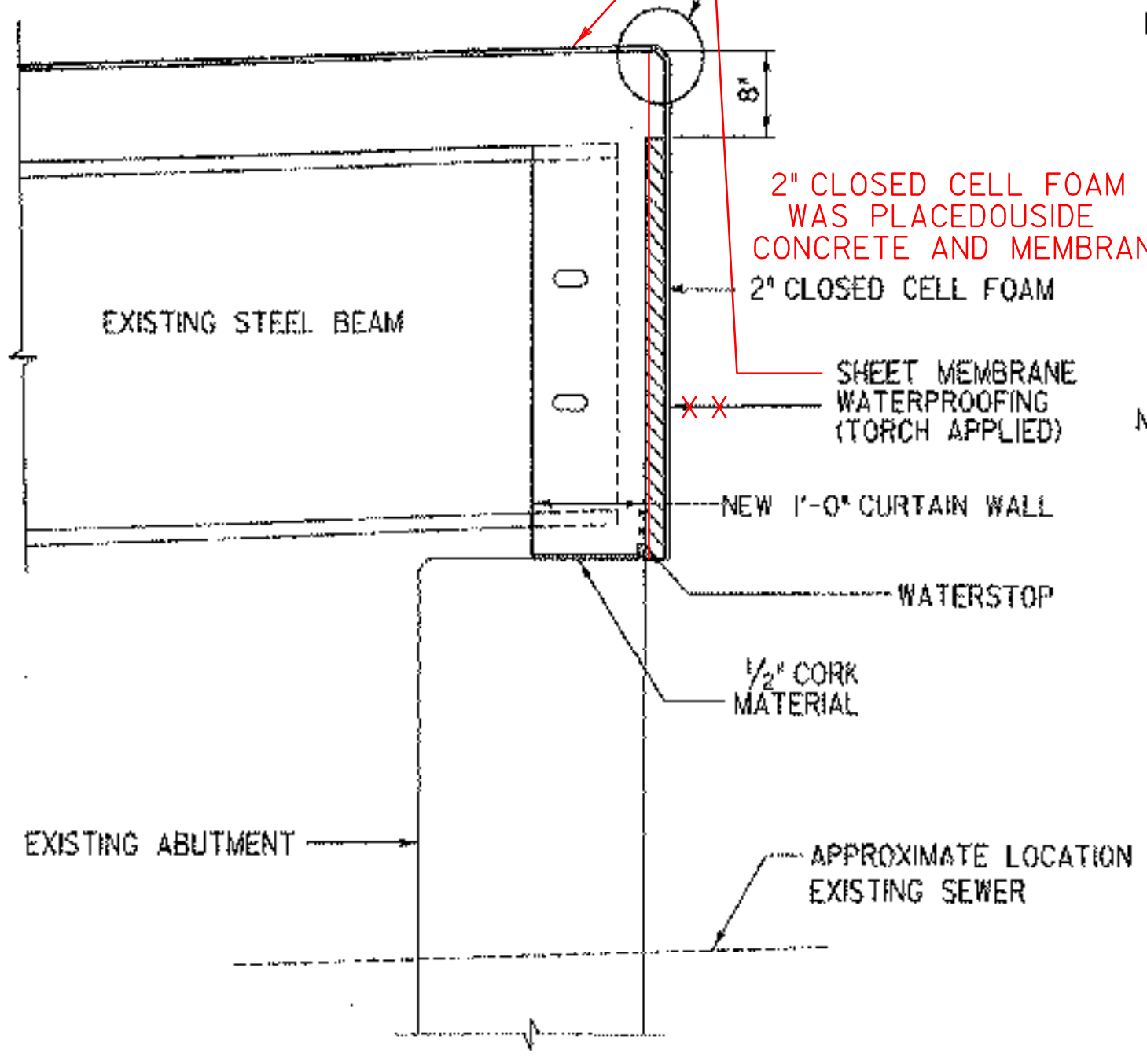
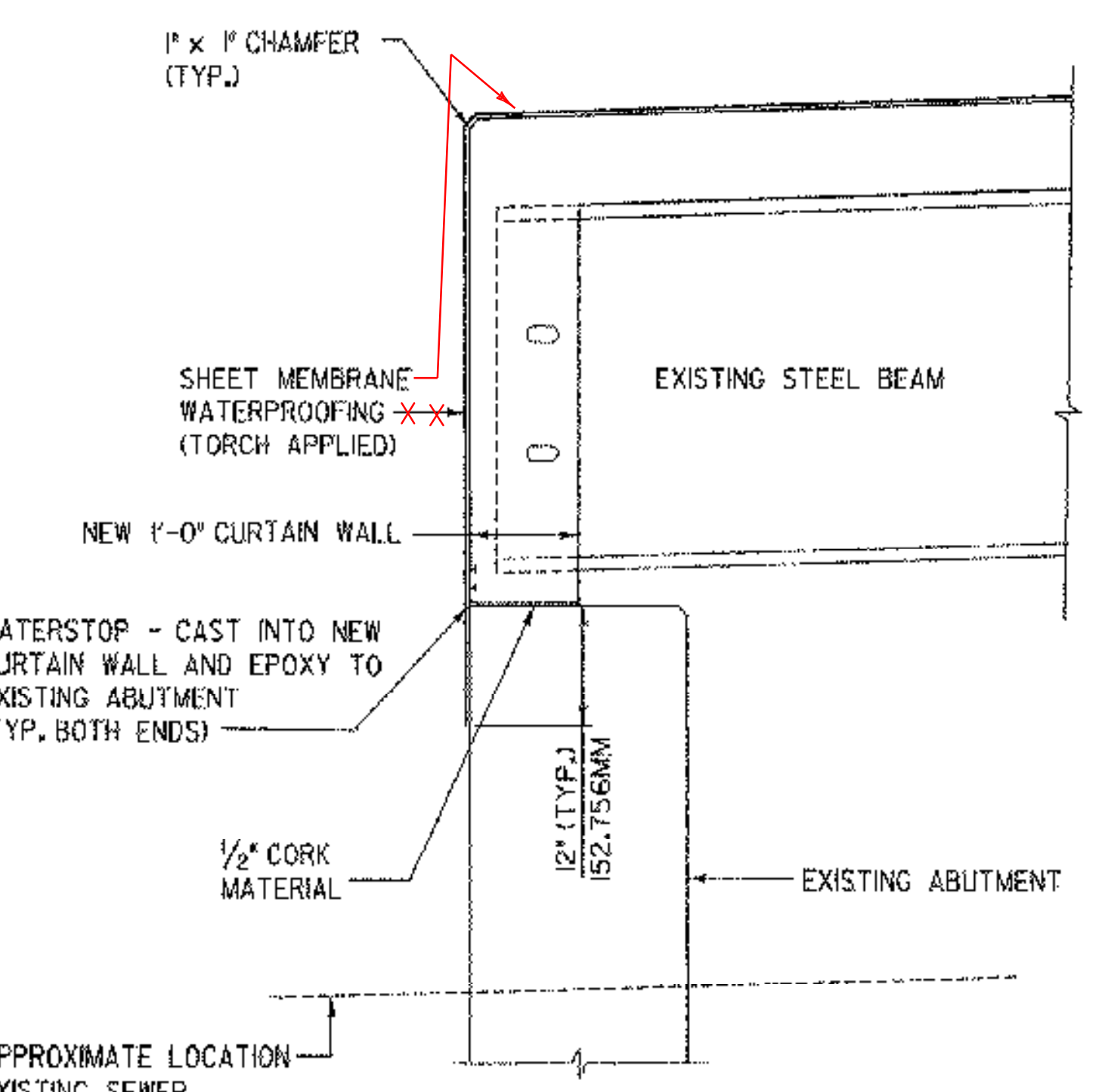
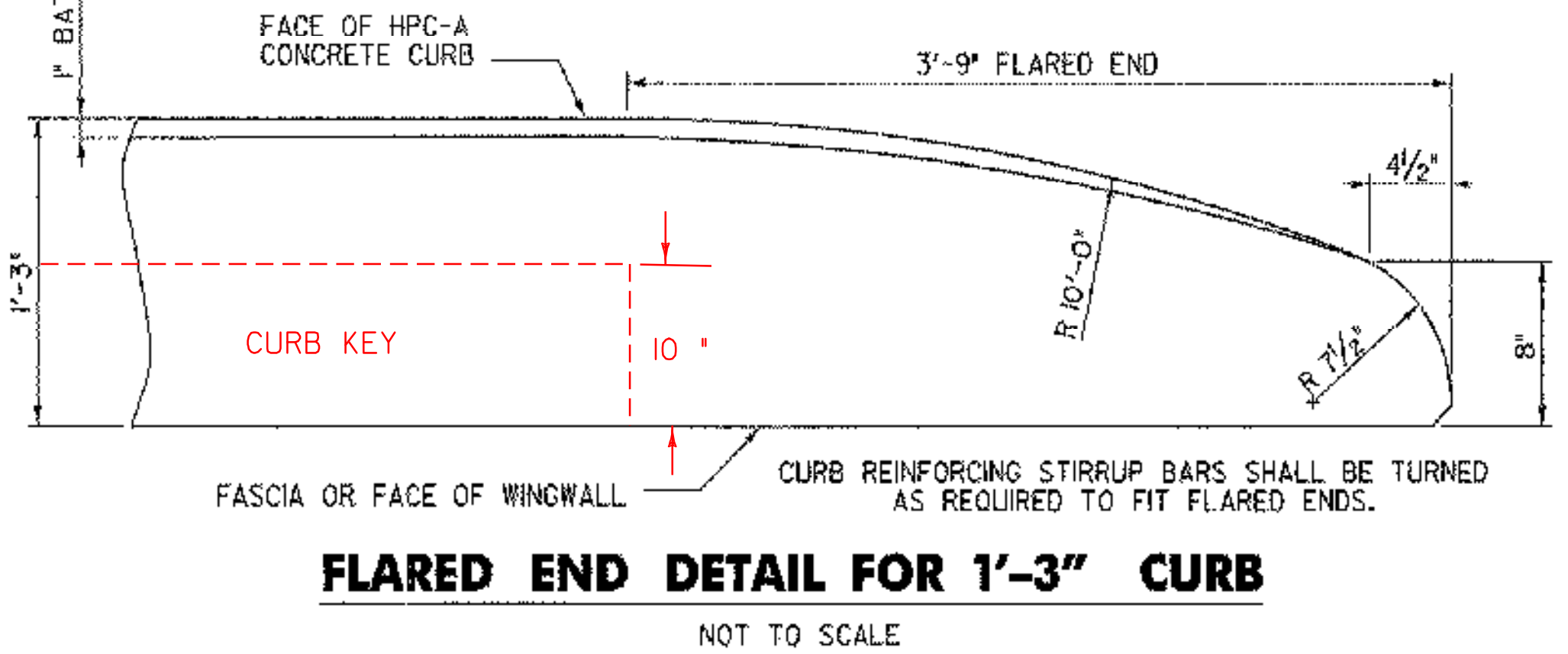
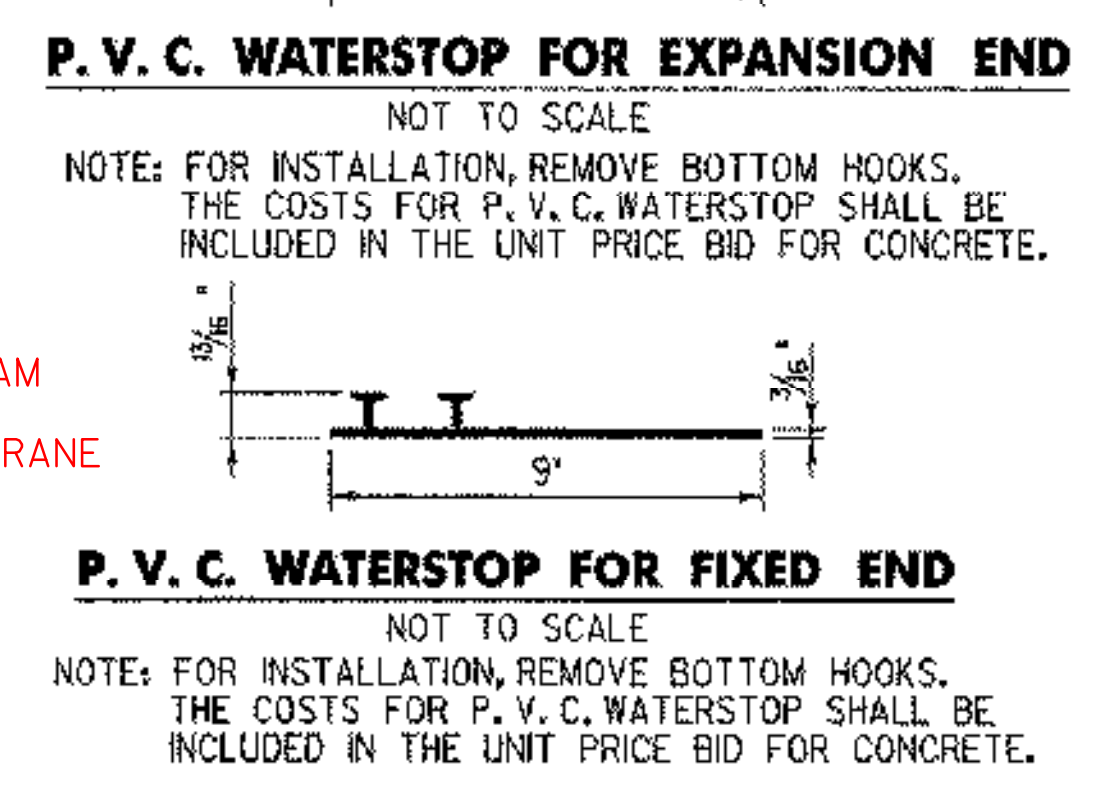
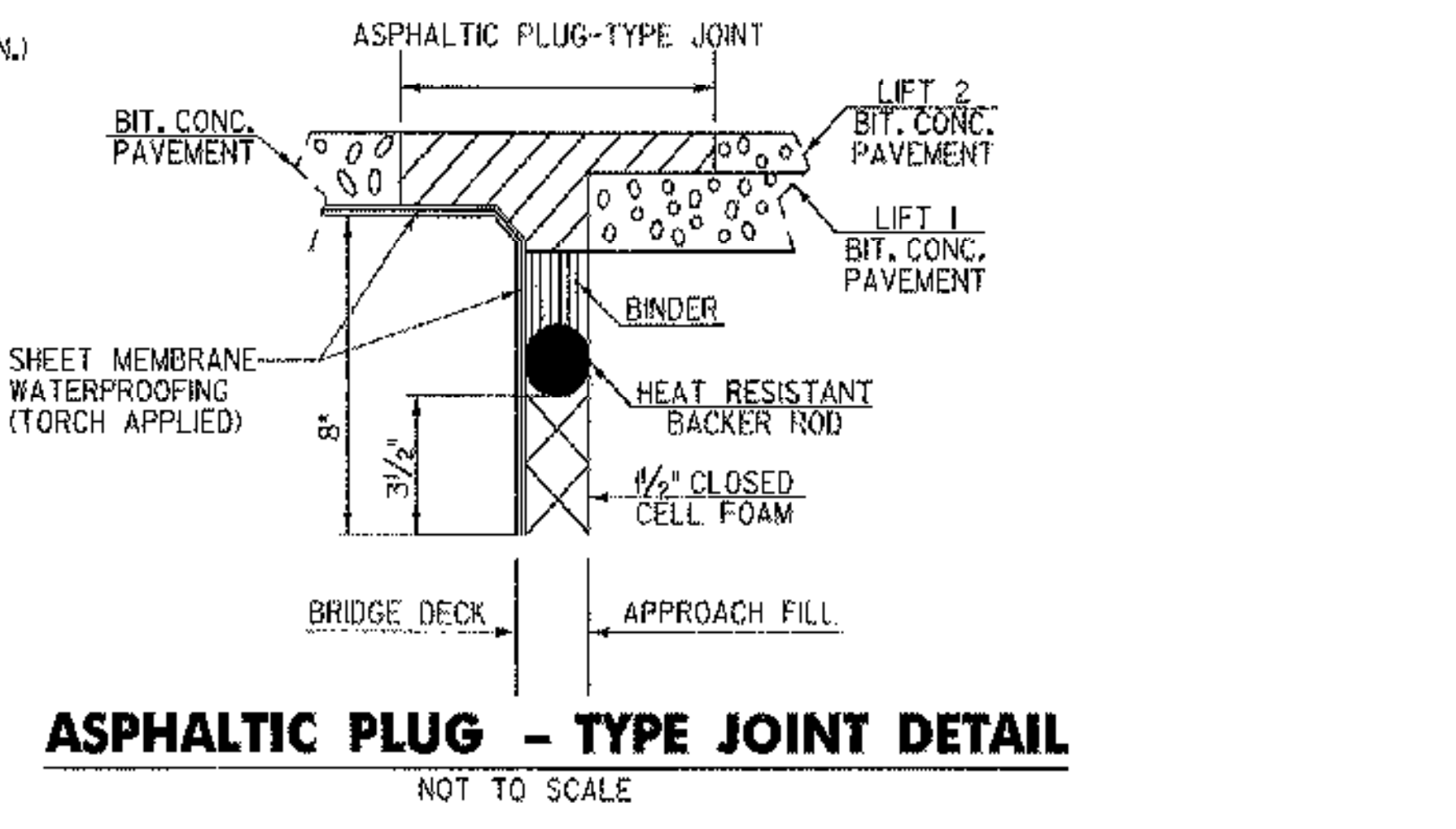
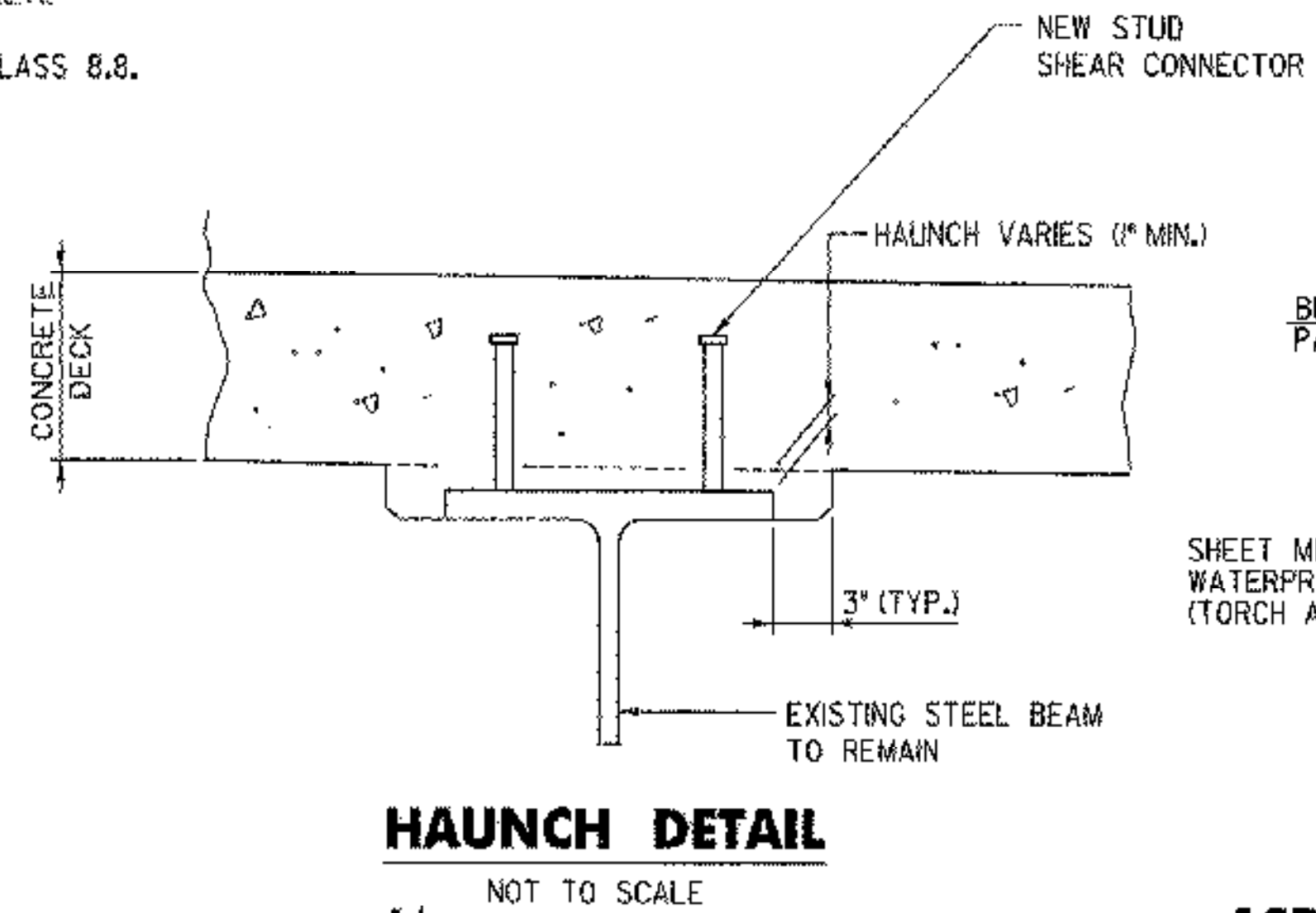


TYPICAL CURB DETAIL
SCALE: 1/2" = 1'-0"

- NOTES**
1. SHEET MEMBRANE WATERPROOFING SHALL EXTEND TO FACE OF CURB AS SHOWN.
 2. BLAST CLEAN ~~3'-0" FROM FACE OF CURB AND 3' UP CURB FACE~~ **WHOLE DECK** PRIOR TO PLACING MEMBRANE.
 3. SEE VAOT STD. SB-R6-82 "ANCHORAGE DETAIL" FOR ADDITIONAL DETAILS
 4. SEE VAOT STD. SB-R6-82 "PLATE WASHER DETAIL" FOR ADDITIONAL DETAILS
 5. CONTRACTOR SHALL VERIFY LOCATION OF ANCHOR "U" BOLTS PRIOR TO POURING CONCRETE
 6. ALL HARDWARE SHALL BE GALVANIZED AND CONFORM TO ASTM SPECIFICATION F568M, CLASS 8.8.
 7. REFER TO VAOT STANDARD SB-R6-82 AND SB-R7-90 FOR ADDITIONAL DETAILS.



- NOTES:**
1. POLYURETHANE MEMBRANE AND BLAST CLEANING SHALL BE INCLUDED IN THE UNIT PRICE BID FOR SHEET MEMBRANE WATERPROOFING (TORCH APPLIED).
 2. CONSTRUCTION JOINTS THROUGH CONCRETE CURBS SHALL BE SPACED MAXIMUM 15'-0" CENTER TO CENTER AND SHALL BE 1'-6" MINIMUM FROM THE CENTER OF THE NEAREST BRIDGE RAIL POST. CONCRETE SHALL BE PLACED IN ALTERNATING SECTIONS WITH A MINIMUM OF 48 HOURS DELAY BETWEEN ADJACENT POURS.
 3. LONGITUDINAL REINFORCING SHALL PASS THROUGH CONCRETE CURB CONSTRUCTION JOINTS.
 4. ALL EPOXY COATED STEEL THAT NEEDS TO BE CUT IN THE FIELD IS TO BE SAW CUT AND THE EXPOSED END IS TO BE TREATED AS PER SECTION 507.04.



REVISIONS		
NO.	DESCRIPTION	BY & DATE

STATE OF VERMONT AGENCY OF TRANSPORTATION	
Town Of BRATTLEBORO	Bridge No. 34
Highway No. 378	Log Sta. Surv. Sta.
TH 378 (WILLIAMS STREET) OVER WHETSTONE BROOK	
DECK DETAILS	
Designed By R. L. JOY	Drawn By E. B. SMALL
Checked By J. W. TUCKER	Date 04/01 Bridge Design Supervisor
PROJECT BRATTLEBORO	PROJECT NO. BHF 2000(22)
I.G.C. Info. ... \zj228d+9.dgn	
D & K DWG NO. 1375	Sheet 10 of 20