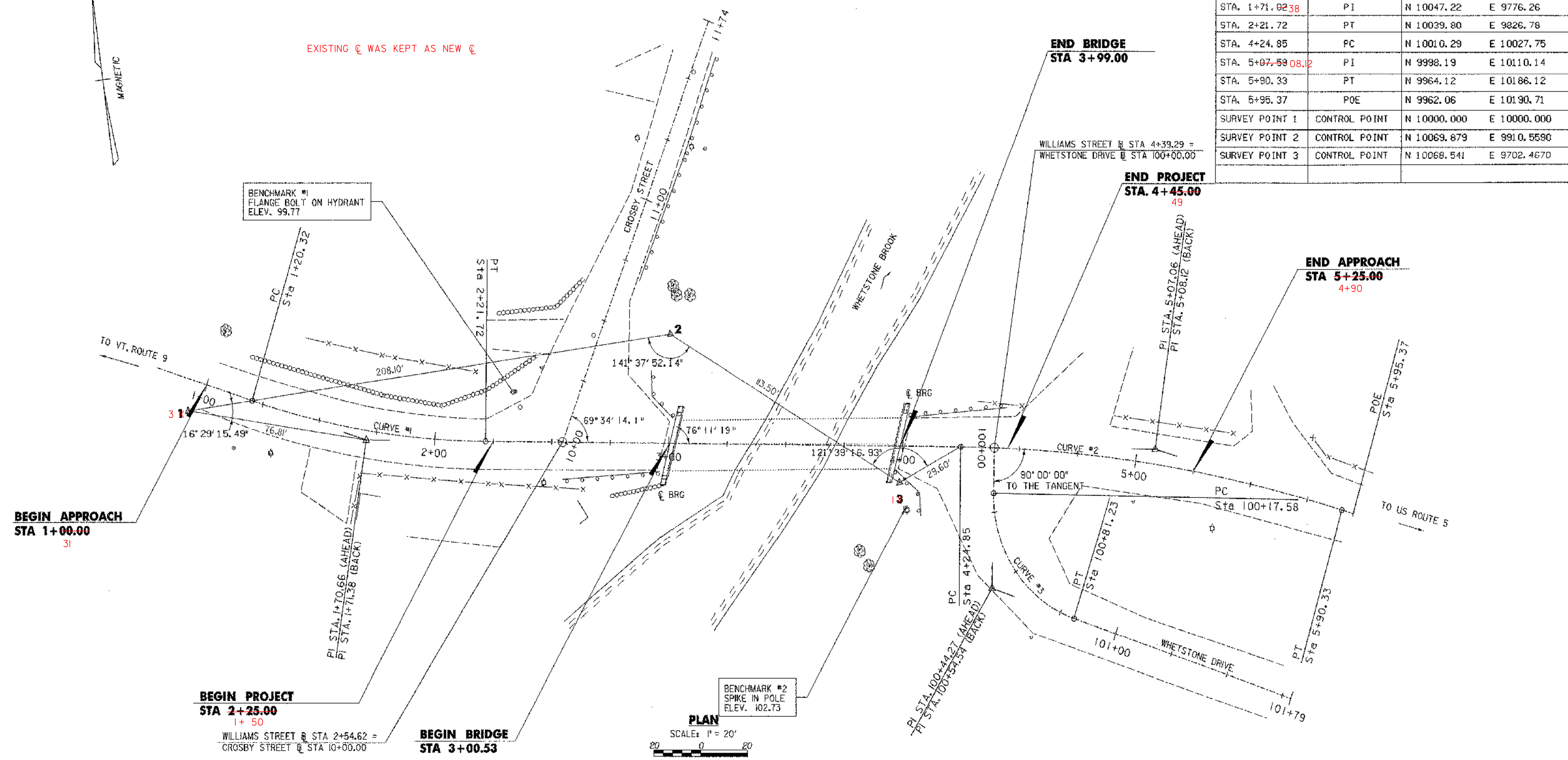


EXISTING C WAS KEPT AS NEW C

LAYOUT COORDINATES			
STA. 0+00.00	POB	N 10119.51	E 9620.88
STA. 1+20.32	PC	N 10068.75	E 9729.97
STA. 1+71.0238	PI	N 10047.22	E 9776.26
STA. 2+21.72	PT	N 10039.80	E 9826.78
STA. 4+24.85	PC	N 10010.29	E 10027.75
STA. 5+07.590812	PI	N 9998.19	E 10110.14
STA. 5+90.33	PT	N 9964.12	E 10186.12
STA. 5+95.37	POE	N 9962.06	E 10190.71
SURVEY POINT 1	CONTROL POINT	N 10000.000	E 10000.000
SURVEY POINT 2	CONTROL POINT	N 10069.879	E 9910.5590
SURVEY POINT 3	CONTROL POINT	N 10068.541	E 9702.4670



BEGIN APPROACH
STA 1+00.00
31

BEGIN PROJECT
STA 2+25.00
1+50

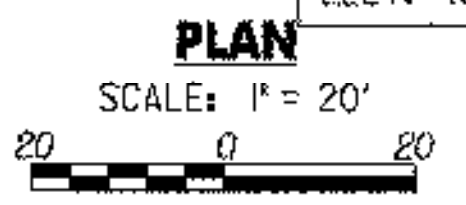
WILLIAMS STREET @ STA 2+54.62 =
CROSBY STREET @ STA 10+00.00

BEGIN BRIDGE
STA 3+00.53

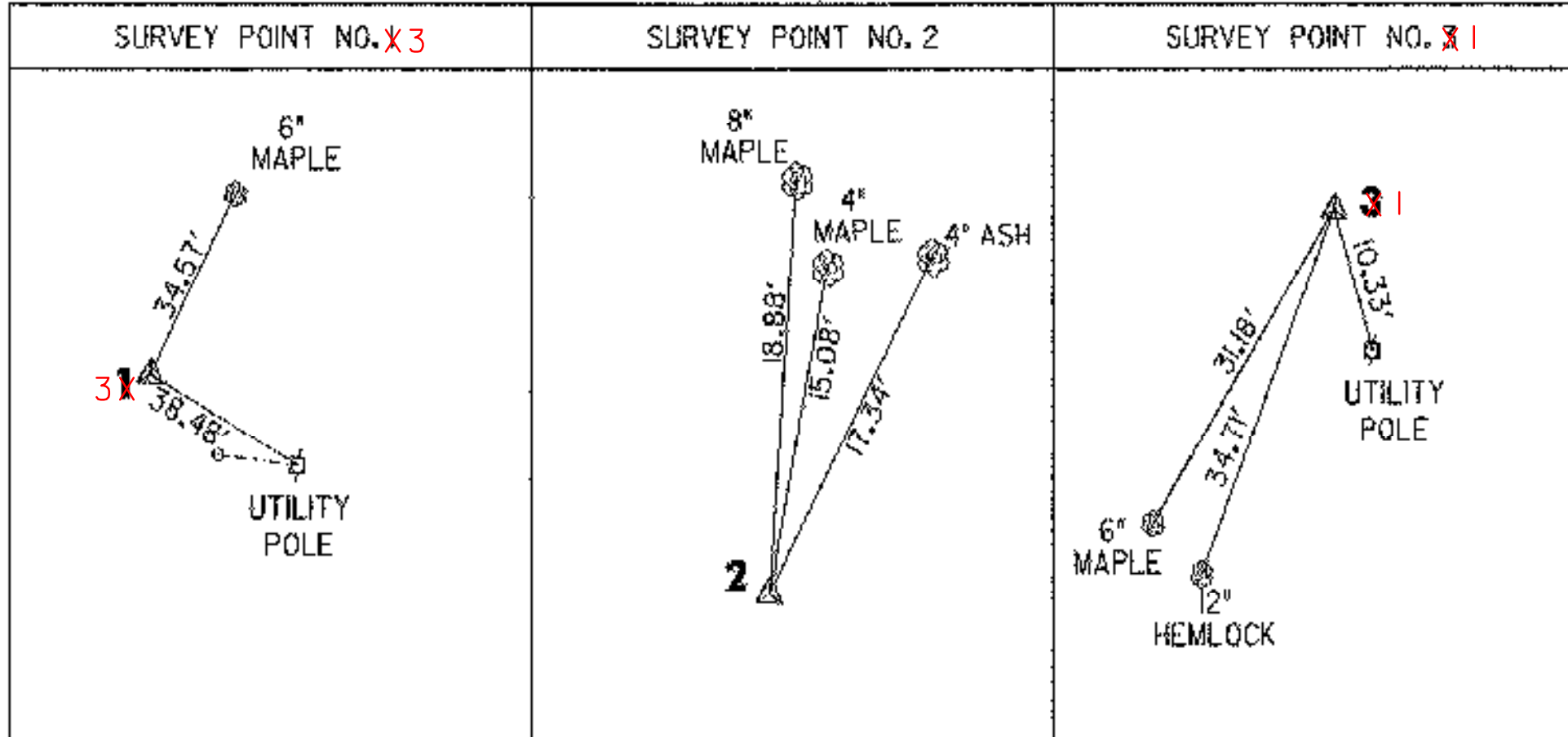
END BRIDGE
STA 3+99.00

END PROJECT
STA 4+45.00
49

END APPROACH
STA 5+25.00
4+90



TIES



CURVE DATA

CURVE #1	CURVE #2	CURVE #3
$\Delta = 16^\circ 35' 57''$	$\Delta = 15^\circ 48' 10''$	$\Delta = 72^\circ 56' 19''$
$D = 16^\circ 22' 13''$	$D = 09^\circ 32' 57''$	$D = 114^\circ 35' 30''$
$R = 350.00'$	$R = 600.00'$	$R = 50.00'$
$T = 51.06'$	$T = 83.27'$	$T = 36.96'$
$L = 101.40'$	$L = 165.49'$	$L = 63.65'$
$E = 3.70'$	$E = 5.75'$	$E = 12.18'$

DATUM	
VERTICAL	ASSUMED
HORIZONTAL	ASSUMED

REVISIONS		
NO.	DESCRIPTION	BY & DATE

**STATE OF VERMONT
AGENCY OF TRANSPORTATION**

Town Of **BRATTLEBORO** Bridge No. **34**

Highway No. **378** Log Sta.

TH 378 (WILLIAMS STREET) OVER WHETSTONE BROOK

TIE SHEET

Designed By **E. B. SMALL** Drawn By **E. B. SMALL**

Checked By **R. W. BELL** Date **04/01** Bridge Design Supervisor **J. W. TUCKER** Date **04/01**

PROJECT **BRATTLEBORO** PROJECT NO. **BHF 2000(22)**

I.G.C. Info. **...zj228bdr.dgn**

D & K DWG NO. **11369** Sheet **4 of 20**

