

**INDEX OF SHEETS**

- 1 TITLE SHEET
- 2 PRELIMINARY INFORMATION SHEET
- 3 QUANTITY SHEET
- 4 TIE SHEET
- 5 PLAN
- 6 PROFILE
- 7 TRAFFIC CONTROL SHEET
- 8 PLAN AND ELEVATION
- 9 CONSTRUCTION NOTES AND DETAILS
- 10 DECK DETAILS
- 11 DECK REINFORCEMENT
- 12 CURTAIN WALL
- 13 FRAMING PLAN AND STEEL DETAILS
- 14 ABUTMENT MODIFICATIONS
- 15 REINFORCING STEEL SCHEDULE
- 16-20 ROADWAY CROSS SECTIONS

**STANDARDS**

B-5	SLOPE GRADING, EMBANKMENTS, MUCK	06-01-94
B-71	RESIDENTIAL AND COMMERCIAL DRIVES	11-16-00
E-100	CONSTRUCTION APPROACH SIGNS	01-02-04
E-100A	SIDE ROAD CONSTRUCTION - APPROACH SIGNS	01-02-04
E-101	CONSTRUCTION SIGN DETAILS	05-30-03
E-102	CONSTRUCTION SIGN DETAILS	08-30-03
E-102A	CONSTRUCTION SIGN DETAILS	08-08-95
E-106	TRAFFIC CONTROL - MISCELLANEOUS DETAILS	08-08-95
E-107	DELINEATION, BARRICADES AND DETOURS FOR CONSTRUCTION AREAS	06-30-03
E-107A	BREAKAWAY BARRICADE DETAILS	08-08-95
E-108	CONSTRUCTION ZONE - LONGITUDINAL DROP OFFS	08-18-95
E-121	STANDARD SIGN PLACEMENT - CONVENTIONAL ROAD	08-08-95
E-143	REGULATORY SIGN DETAILS	09-20-95
E-160	FLANGED CHANNEL STEEL SIGN POST	05-20-99
E-191	PAVEMENT MARKING DETAILS	02-01-99
E-193	PAVEMENT MARKING DETAILS	08-18-95
G-1	STEEL BEAM GUARDRAIL (50MPH & OVER) HEAVY DUTY STEEL BEAM GUARDRAIL TWISTED END TERMINAL ANCHOR FOR STEEL BEAM RAIL	01-03-00
G-1D	STEEL BEAM GUARDRAIL (40MPH & LESS) HEAVY DUTY STEEL BEAM GUARDRAIL STEEL BEAM MEDIAN BARRIER ANCHOR FOR STEEL BEAM RAIL	01-03-00
G-18	PRECAST CONCRETE TEMPORARY TRAFFIC BARRIER	06-01-94
T-1	TEMPORARY EROSION CONTROL DETAILS	06-01-94
T-2	TEMPORARY EROSION CONTROL DETAILS	06-01-94
SB-R4A-82	BRIDGE RAILING - GALVANIZED BOX BEAM	09-18-89
SB-R6-82	BRIDGE RAILING - HEAVY DUTY STEEL BEAM	01-06-95
SB-R7-90	BRIDGE RAILING - HEAVY DUTY STEEL BEAM	01-11-95

# STATE OF VERMONT AGENCY OF TRANSPORTATION



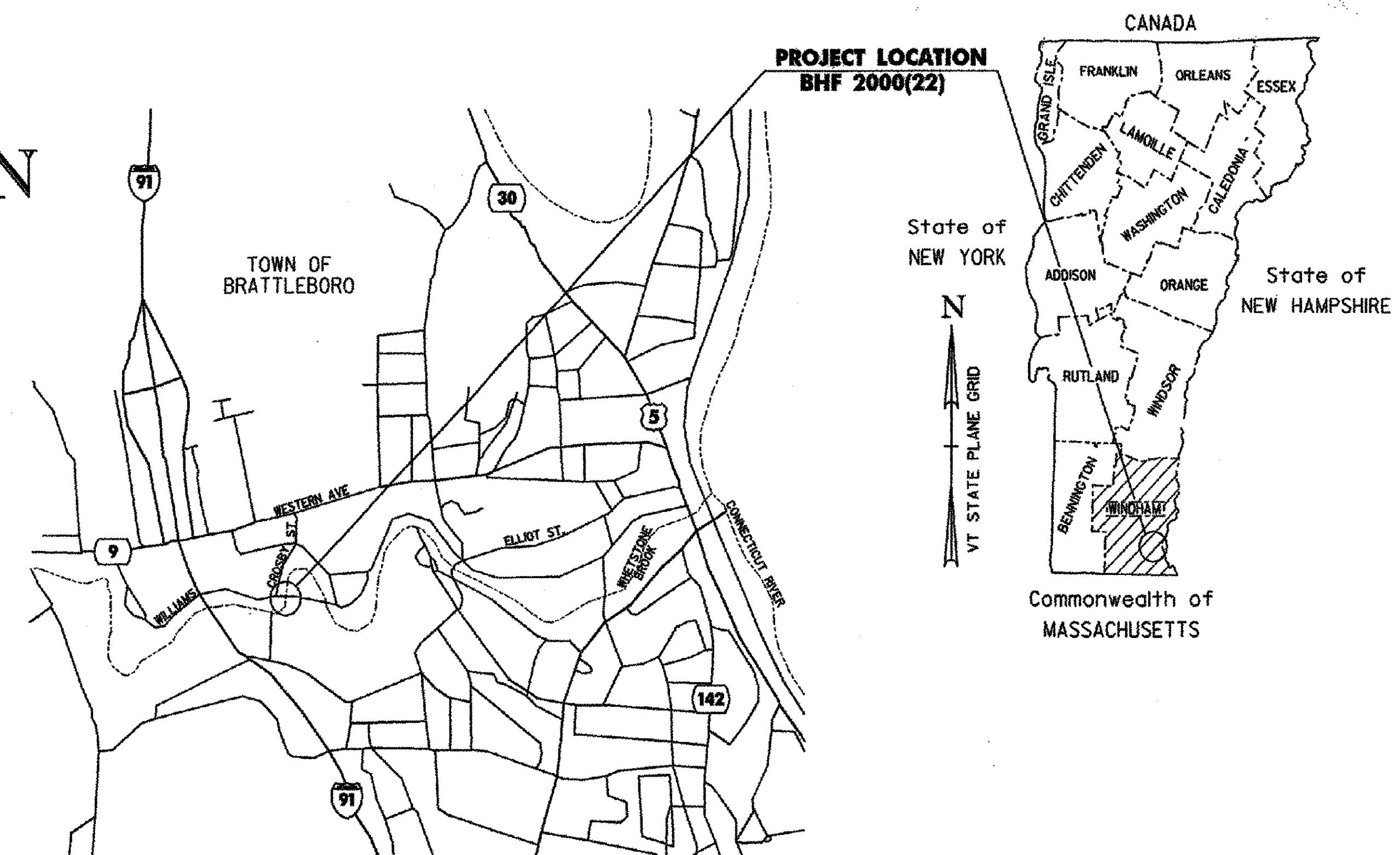
## PROPOSED IMPROVEMENT BRIDGE PROJECT TOWN OF BRATTLEBORO COUNTY OF WINDHAM

WILLIAMS ST. (TH 378), CLASS 2, BRIDGE NO. 34

**PROJECT LOCATION:** BEGINNING AT A POINT ON WILLIAMS ST. (TH 378), APPROXIMATELY 0.96 MILES SOUTH EAST OF THE JUNCTION OF VT 9 AND WILLIAMS STREET AND EXTENDING EASTERLY ALONG WILLIAMS ST. (TH 378) FOR 0.042 MILES.

**PROJECT DESCRIPTION:** REMOVAL OF EXISTING CONCRETE DECK AND BRIDGE RAIL, CONSTRUCTION OF NEW CAST IN PLACE CONCRETE DECK ON EXISTING STEEL BEAMS, AND RELATED APPROACH WORK.

LENGTH OF STRUCTURE = 98.47 FEET = 0.019 MILES  
 LENGTH OF ROADWAY = 121.53 FEET = 0.023 MILES  
 LENGTH OF PROJECT = 220.00 FEET = 0.042 MILES

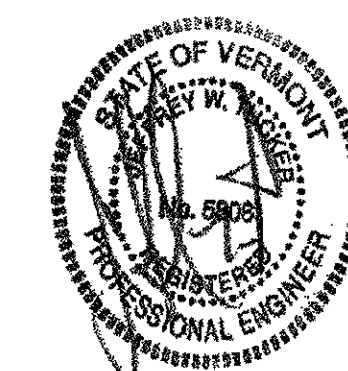
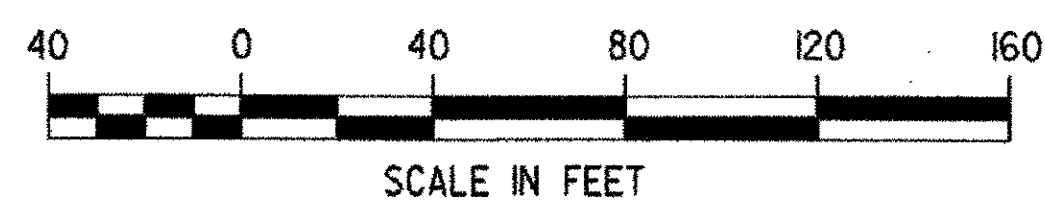
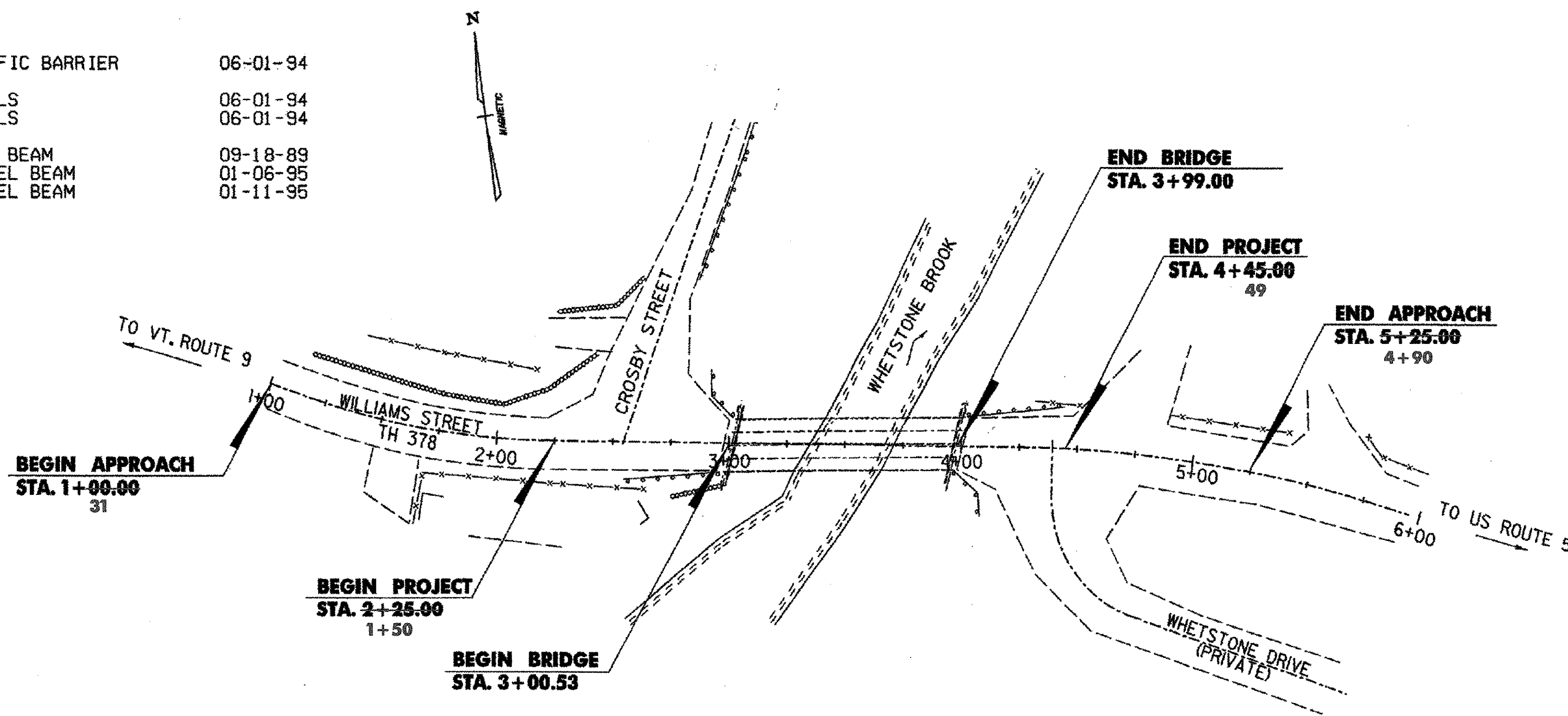


**LOCATION MAP**  
NOT TO SCALE

**CONVENTIONAL SIGNS**

COUNTY LINE	---
TOWN LINE	- - - -
LIMITS OF ACCESS	○-○-○-○
POINT OF ACCESS	X
FENCE LINE	-x-x-
STONE WALL	○○○○○○○○○○
TRAVELED WAY	----
GUARD RAIL	○-○-○-○
RAILROAD	
SURVEY LINE	+
CULVERT	----
POWER POLE	□
FIRE HYDRANT	◇
TELEPHONE POLE	◇
TREES	⊗ ⊛
CONTROL OF ACCESS	///
PROPERTY LINE	---
R.O.W. TAKING LINE	SR
SLOPE RIGHTS	○-△
TOP OF CUT	△-△
TOE OF SLOPE	○-○

**DATUM**  
 VERTICAL ASSUMED  
 HORIZONTAL ASSUMED



**RECORD PLANS**

CONTRACTOR: FW WHITCOMB CONSTRUCTION CORP. - WALPOLE, NH  
 RESIDENT ENGINEER: FRED W. ROSS III  
 CONSTRUCTION BEGAN: JULY 26, 2004  
 CONSTRUCTION COMPLETE: NOVEMBER 12, 2004  
 RECORD PLANS BY: FRED ROSS & N. GARBACIK

I HEREBY CERTIFY THAT ALL THE CONSTRUCTION REQUIRED BY THIS SET OF DRAWINGS HAS BEEN ACCOMPLISHED AS INDICATED HEREIN.  
 BY: *Fred W. Ross III* RESIDENT ENGINEER  
 DATE: 3-21-07

NOTE: Any further information concerning final quantities, amounts or other details relative to this project may be found at Central Files in the electronic archives.

THESE PLANS ARE SUBJECT TO SUCH ENGINEERING CHANGES AS MAY BE REQUIRED BY THE FEDERAL HIGHWAY ADMINISTRATION OR THE DIRECTOR OF PROJECT DEVELOPMENT.  
 CONSTRUCTION IS TO BE CARRIED ON IN ACCORDANCE WITH THESE PLANS AND THE STANDARD SPECIFICATIONS FOR CONSTRUCTION DATED 2001, ON JANUARY 4, 2001 AS APPROVED BY THE FEDERAL HIGHWAY ADMINISTRATION FOR USE ON THIS PROJECT, INCLUDING ALL SUBSEQUENT REVISIONS AND SUCH REVISED SPECIFICATIONS AND SPECIAL PROVISIONS AS ARE INCORPORATED IN THESE PLANS.

APPROVED <i>Stephen Barrett</i> DATE 2-5-04 STEPHEN BARRETT MUNICIPAL PROJECT MANAGER
APPROVED <i>Fred Ross</i> DATE 2/19/04 DIRECTOR OF PROGRAM DEVELOPMENT
PROJECT BRATTLEBORO BHF 2000(22)
D & K DWG NO. 11366 Sheet 1 of 20