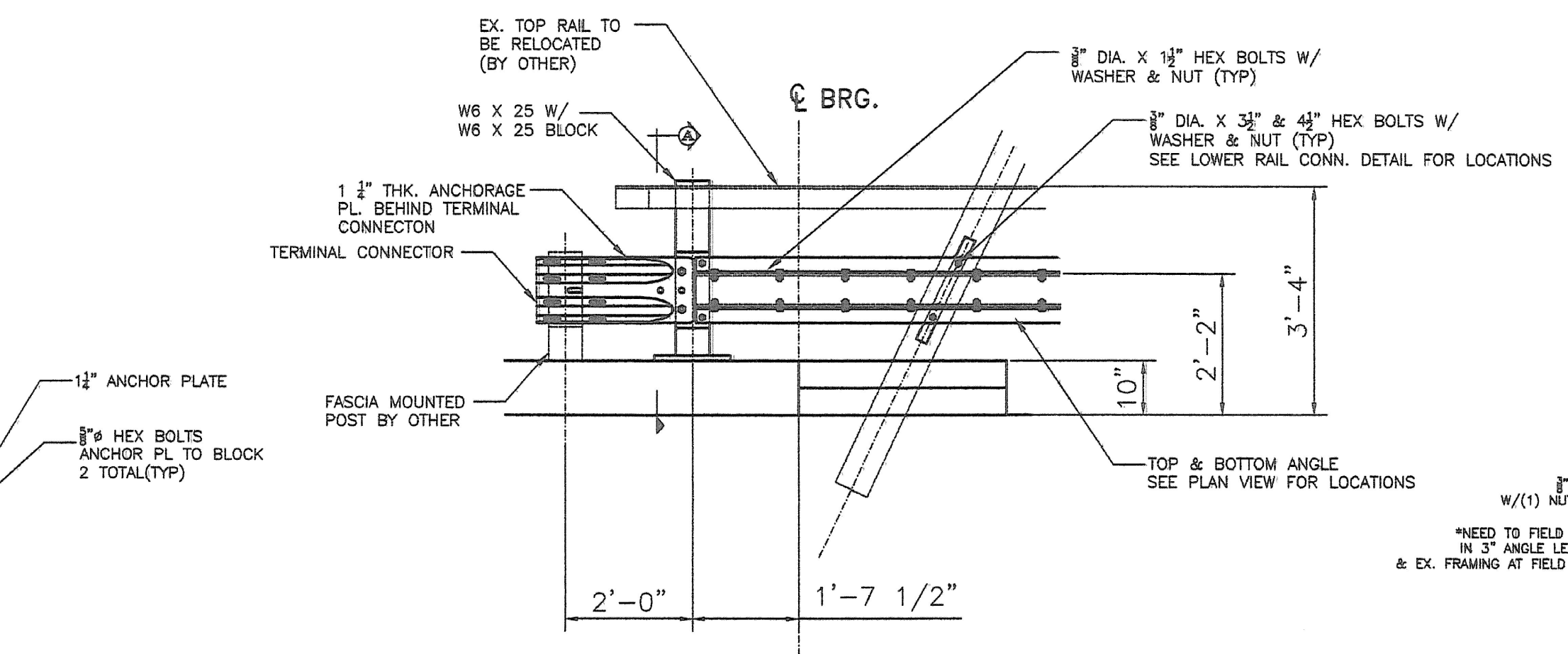


ELEVATION VIEW OF BRIDGE RAILING (FOUNDRY ROAD)
BOTH SIDES SIMILAR / PIN BRO-1444-(39)

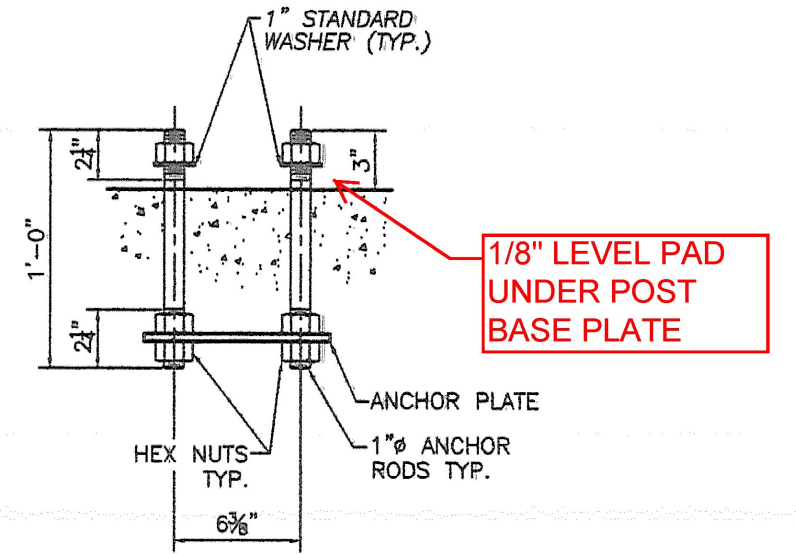
PLAN VIEW (TYP. EA. END)
TOP RAIL NOT SHOWN FOR CLARITY



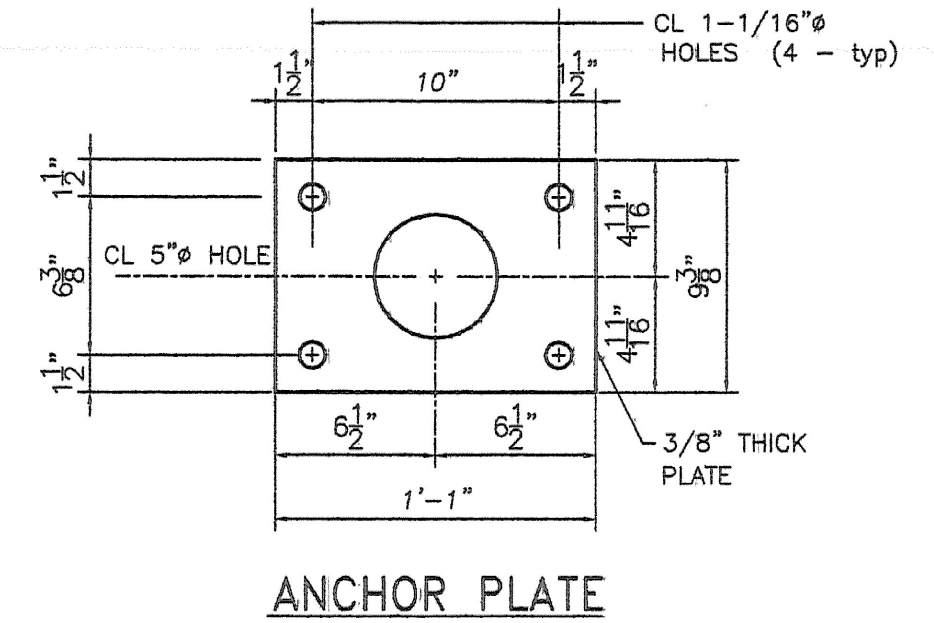
APPROACH/LOWER RAIL DETAILS

TYP. SECTION
FIELD TO VERIFY LOCATIONS OF HSS 2 X 2

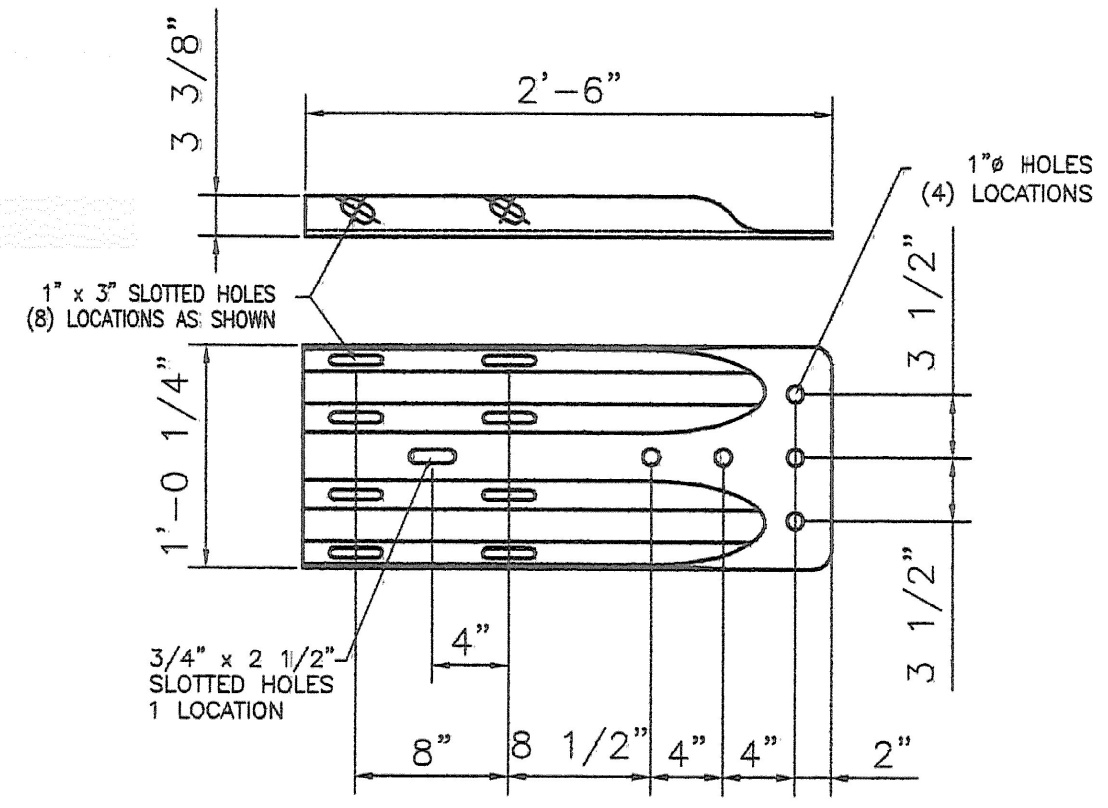
LOWER RAIL CONNECTION DETAILS



POST ANCHOR ASSEMBLY

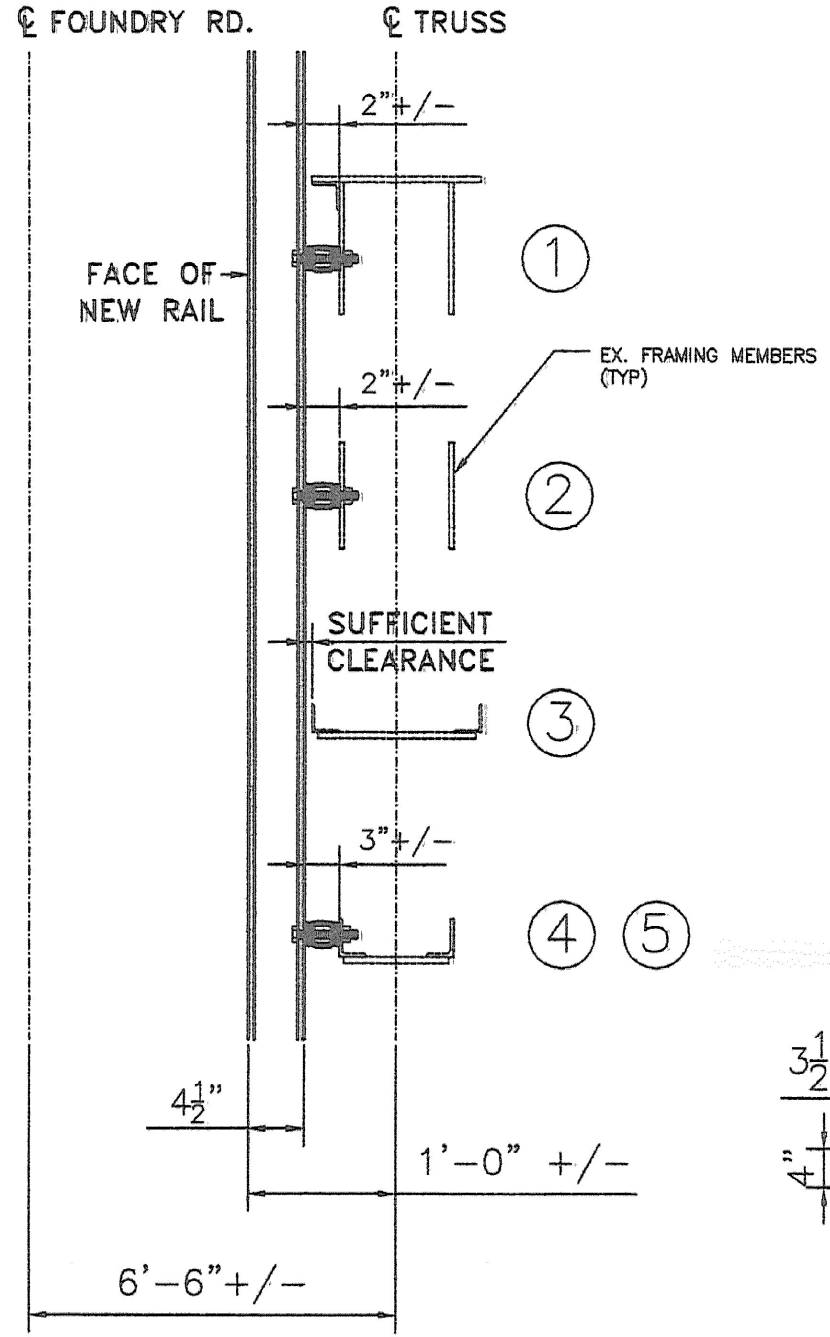


ANCHOR PLATE

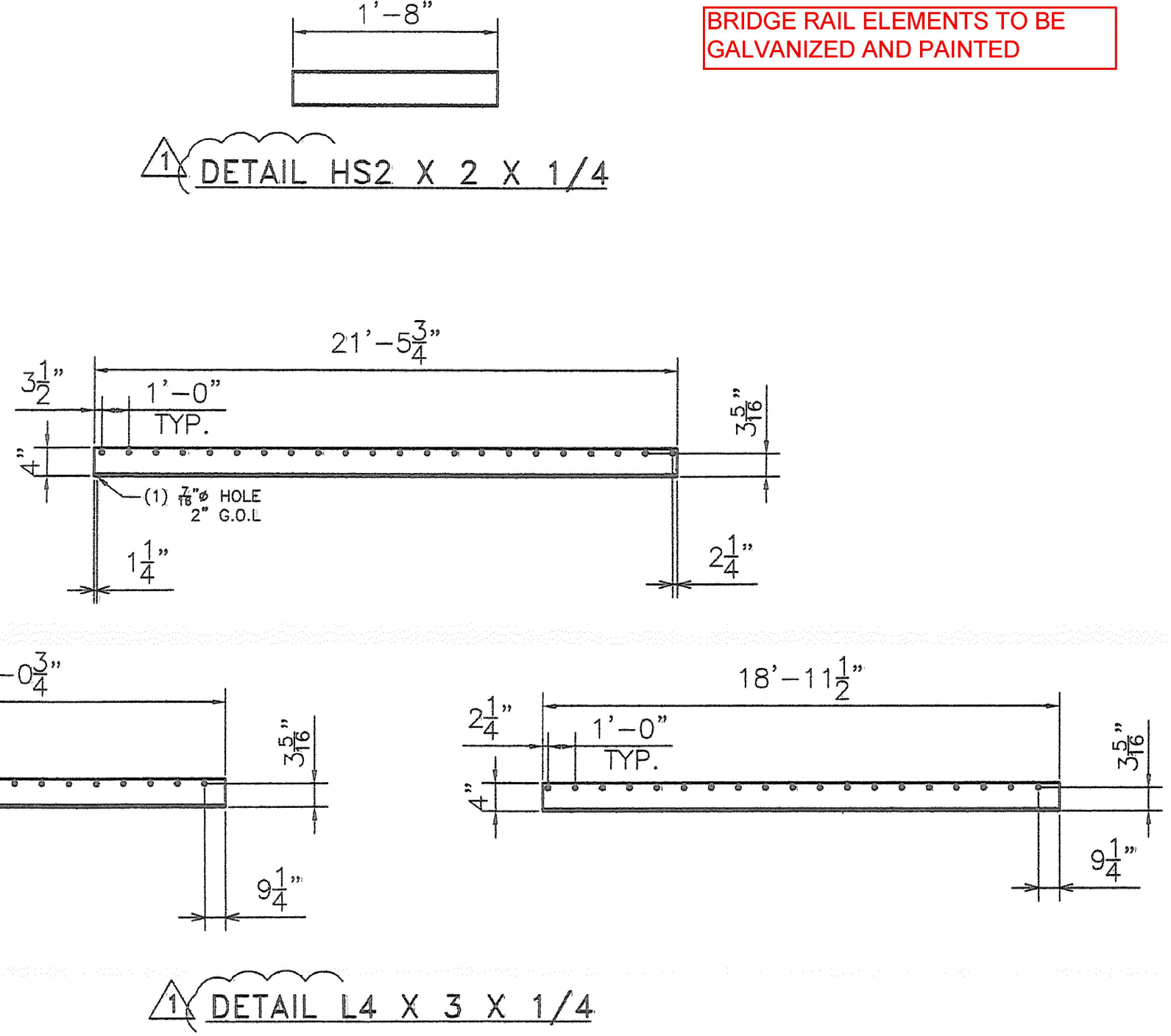


W-BEAM TERMINAL CONNECTOR

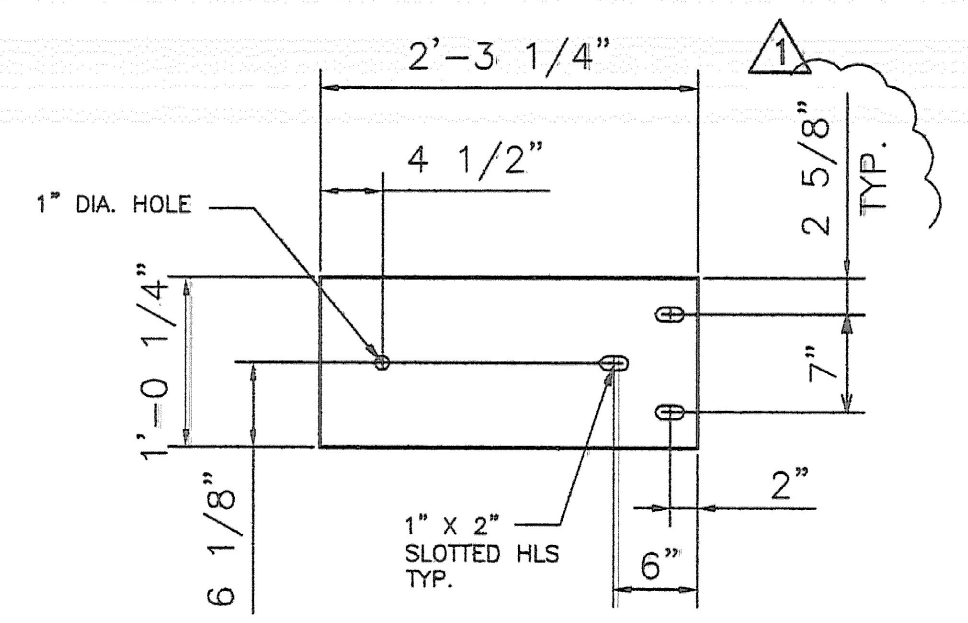
BILL OF MATERIAL (BOTH SIDES OF BRIDGE)				
Each	Description	Size/Shape	Weight/Qty. per unit	Material
4	PED POST 2'-9" OAH W/ BASE PLATE	W6 x 25	2'-8"	A572 Gr. 50
4	POST UPRIGHT	W6 x 25	2'-8"	A572 Gr. 50
4	POST BASE PLATE	1" x 10"	1'-2"	A572 Gr. 50
4	OFFSET BLOCK	W6 x 25	1'-2"	A572 Gr. 50
LOWER RAIL ASSEMBLY				
8	L4 X 3 X 3/8 (MK.A)		16'-0 3/4"	A36
16	L4 X 3 X 3/8 (MK.B)		18'-11 1/2"	A36
8	L4 X 3 X 3/8 (MK.C)		21'-5 3/4"	A36
4	C6 X 8.2		18'-9 1/4"	A36
4	C6 X 8.2		18'-11 1/2"	A36
24	HSS 2 X 2 X 1/4		1'-8"	A500 GR. B
4	ANCHORAGE PLATE	1 1/4" X 12 1/4"	2'-3 1/4"	A572 Gr. 50
16	ANCHOR ROD	1"	12"	A449
48	HEX NUT	1"	- - -	A563 Gr. A
16	WASHER	1"	- - -	F436
4	ANCHOR PLATE	3/8" x 10"	1'-2"	A36
4	W-BEAM TERMINAL CONNECTOR	10 GA.	2'-6"	M180
8	HEX HEAD BOLTS	3/4"	2"	A325 OR A449
8	HEX NUT & STD. WASHER	3/4"	- - -	A563 DH
8	ROUND HEAD BOLTS	5/8"	2 3/4"	A325 OR A449
8	HEX NUT & STD. WASHER	5/8"	- - -	A563 DH
160	HEX HEAD BOLTS	3/8"	1 1/2"	A325 OR A449
48	HEX HEAD BOLTS	3/8"	4"	A325 OR A449
208	HEX NUTS	3/8"	- - -	A563 DH
304	STD. WASHER	3/8"	- - -	F436



SECTION DETAIL
SEE ELEV. VIEW FOR LOCATIONS



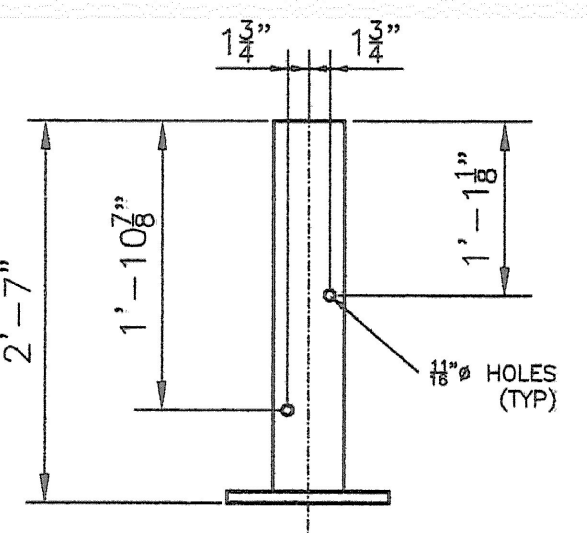
DETAIL L4 X 3 X 1/4



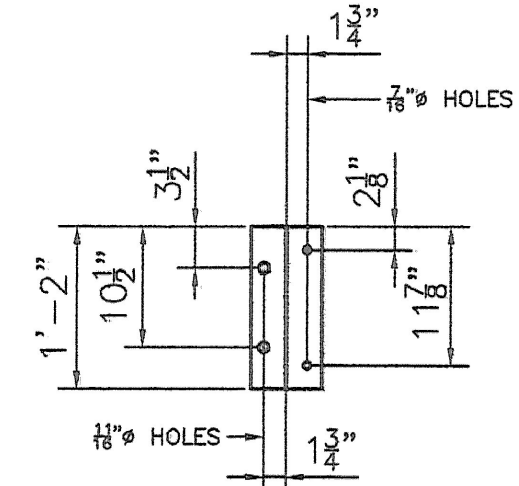
ANCHORAGE PLATE DETAIL
PL 1 1/4" X 12 1/4" X 2'-3 1/4"



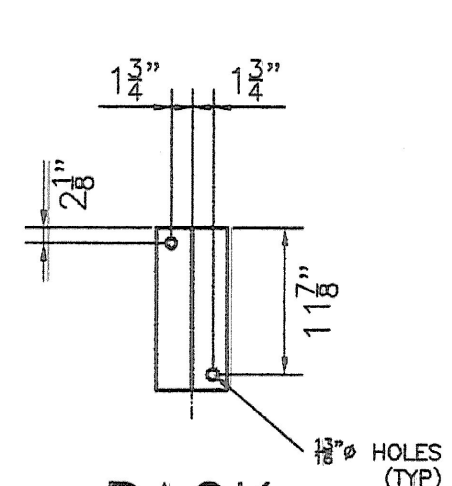
POST BASE PLATE



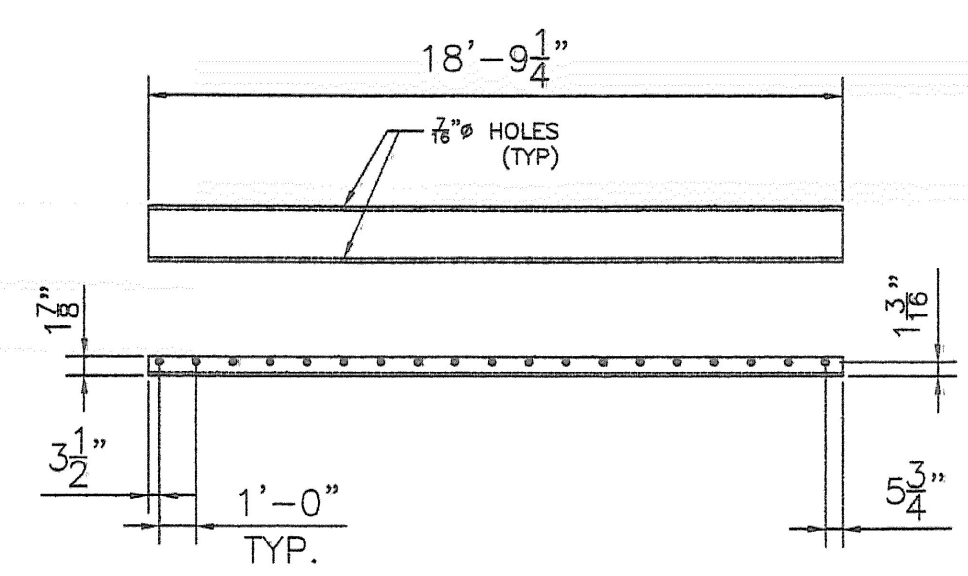
W6X25 POST DETAIL



FRONT



BACK



DETAIL C6 X 8.2

Vermont Agency of Transportation
RECEIVED
CK'D BY RLJ OK'D BY KMH
9:03 am, May 12, 2010
RESUBMIT APPROVED X (AS NOTED)
BY KMH DATE 5-12-2010

HIGHWAY SAFETY CORP
GLASTONBURY, CT
860-633-9445

RENOVATIONS TO TUNBRIDGE
ADDITION OF POSTS & LOWER RAIL ASSY.
TUNBRIDGE VT. PROJ. # 1444 (39)

CERTIFIED FABRICATOR

GEN. CONTRACTOR:
SUB CONTRACTOR: F.R. LAFAYETTE, INC.
DRAWN: RWL CHECKED: PAR DATE: 2/8/2010 SCALE: NONE SIZE: D

PROJ. # 1444 (39)
SHEET NO. 1737
1 of 1

REVISIONS		
No.	Remarks	Date
0	Initial submittal	3/24/10
1	Revised per REVIEW COMMENTS	4/26/10