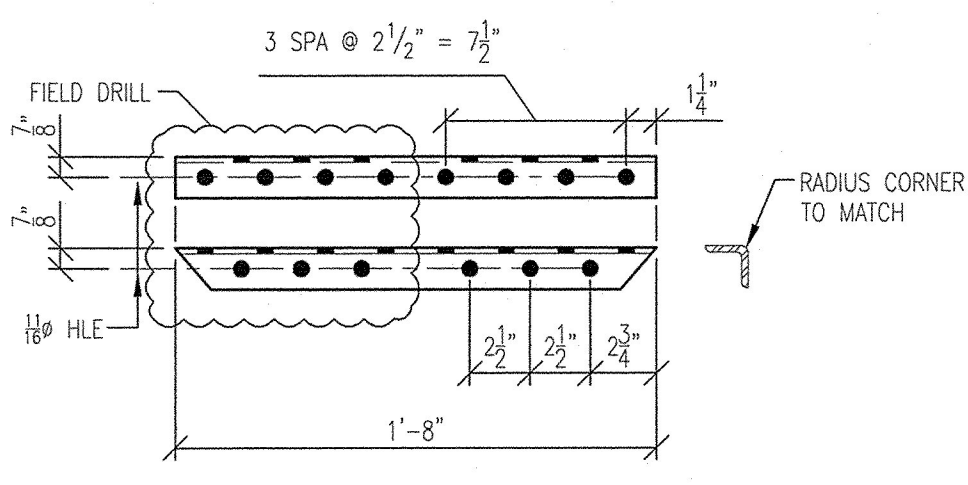


ONE-16S2B1
MATCH EXISTING R MRK'D "S2B1"



ONE-16N2B1
MATCH EXISTING R MRK'D "N2B1"



DETAIL OF 6S2B1A

BILL OF MATERIAL					
QTY	MARK	MATERIAL	LENGTH		REMARKS
			FEET	INCHES	
ONE	16S2B1	L2x2x1/4	22	10	
ONE	6S2B1A	L1 3/4x1 3/4x1/4	1	8	
4	XB14	5/8 A325 H.H. BOLT	0	1 3/4	W/N&W - GALV
ONE	16N2B1	L2x2x1/4	25	10 9/16	
ONE	6S2B1A				
4	XB14				

L - A529, A572, A992 GR.50

SHOP NOTE:
-EASE ALL SHARP EDGES
-DRILL ALL HLS

print record	
2 SHOP 3-18	
2 SHOP 3-26	
job no 4022-1000	
date 3-17-10	
drawn by ARH	
checked by MCB	

revisions

rev#	date	description
1	3-26	ADDED DIMS
2	3-26	REV'D DIM
3	4-26	REV'D LGTH & REMOVED HLS

customer
TUNBRIDGE BRIDGE
3 BEST AVENUE
MECHANICVILLE, NY 12118

project
ALPINE CONSTRUCTION
10 BROAD ST
SCHUYLERVILLE, NY 12871

sheet
16

Vermont Agency of Transportation
RECEIVED
CK'D BY RJ OK'D BY KMH
10:47 am, May 05, 2010
RESUBMIT APPROVED X
BY KMH DATE 5-5-2010

HOLES: 11/16 U.N.O.
SURFACE PREP: SSPC-SP2
PAINT: N/A
ELECTRODES: N/A

GENERAL NOTES:
ALL DIMENSIONS FROM END OF MAIN MATERIAL UNLESS NOTED.
ALL VERTICAL SPACING OF HOLES TO BE 3" UNLESS NOTED.
ALL COPIES TO HAVE 1/2" MINIMUM RADIUS.
CHARGES FOR CORRECTIVE WORK WILL NOT BE HONORED UNLESS PREVIOUS APPROVAL IS OBTAINED FROM JEFFORDS STEEL AND ENGINEERING COMPANY.
MEMBERS ARE TO BE ERECTED SO THAT MARKED END IS IN THE SAME LOCATION AS ON ERECTION DRAWING.