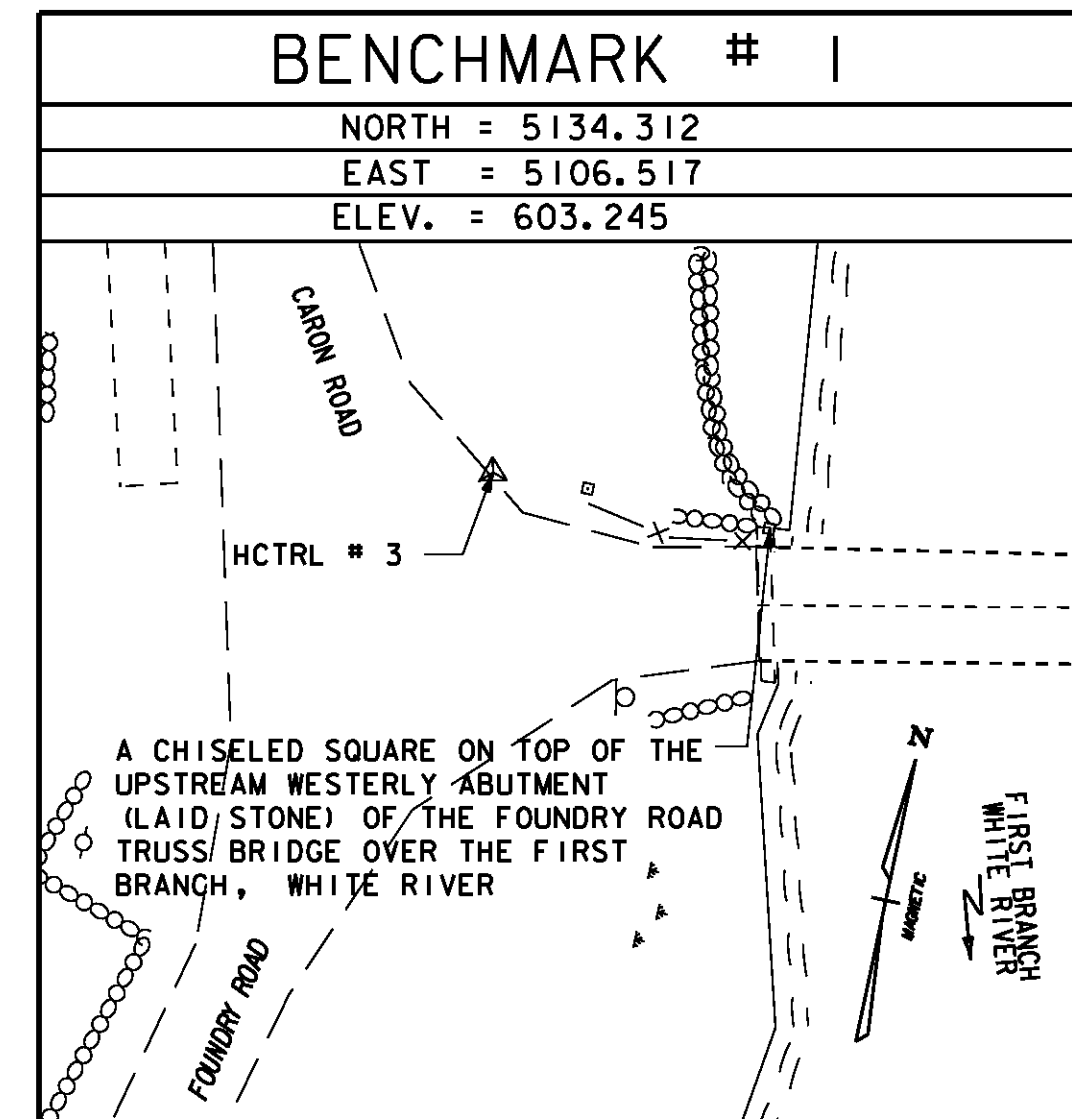
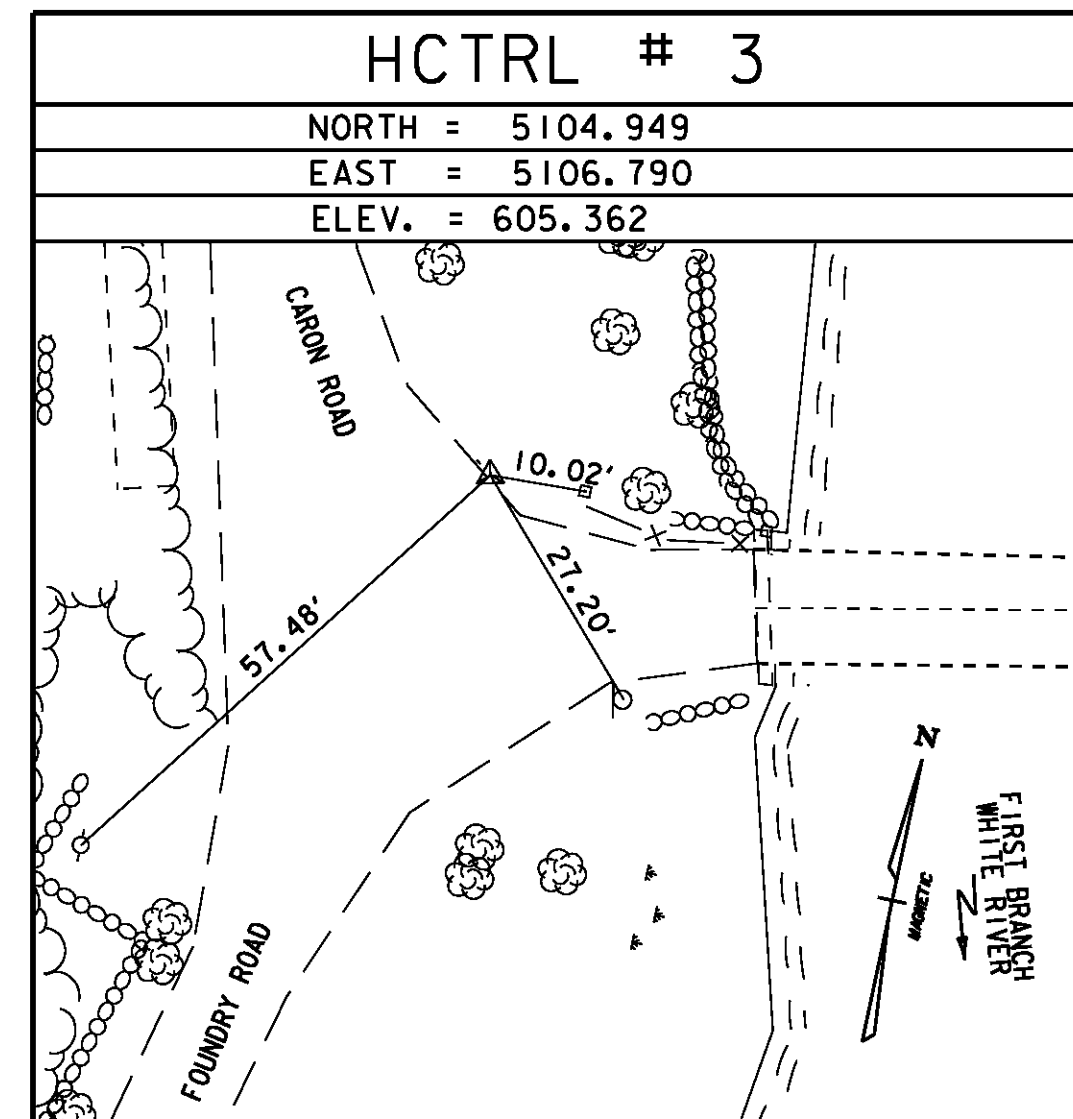
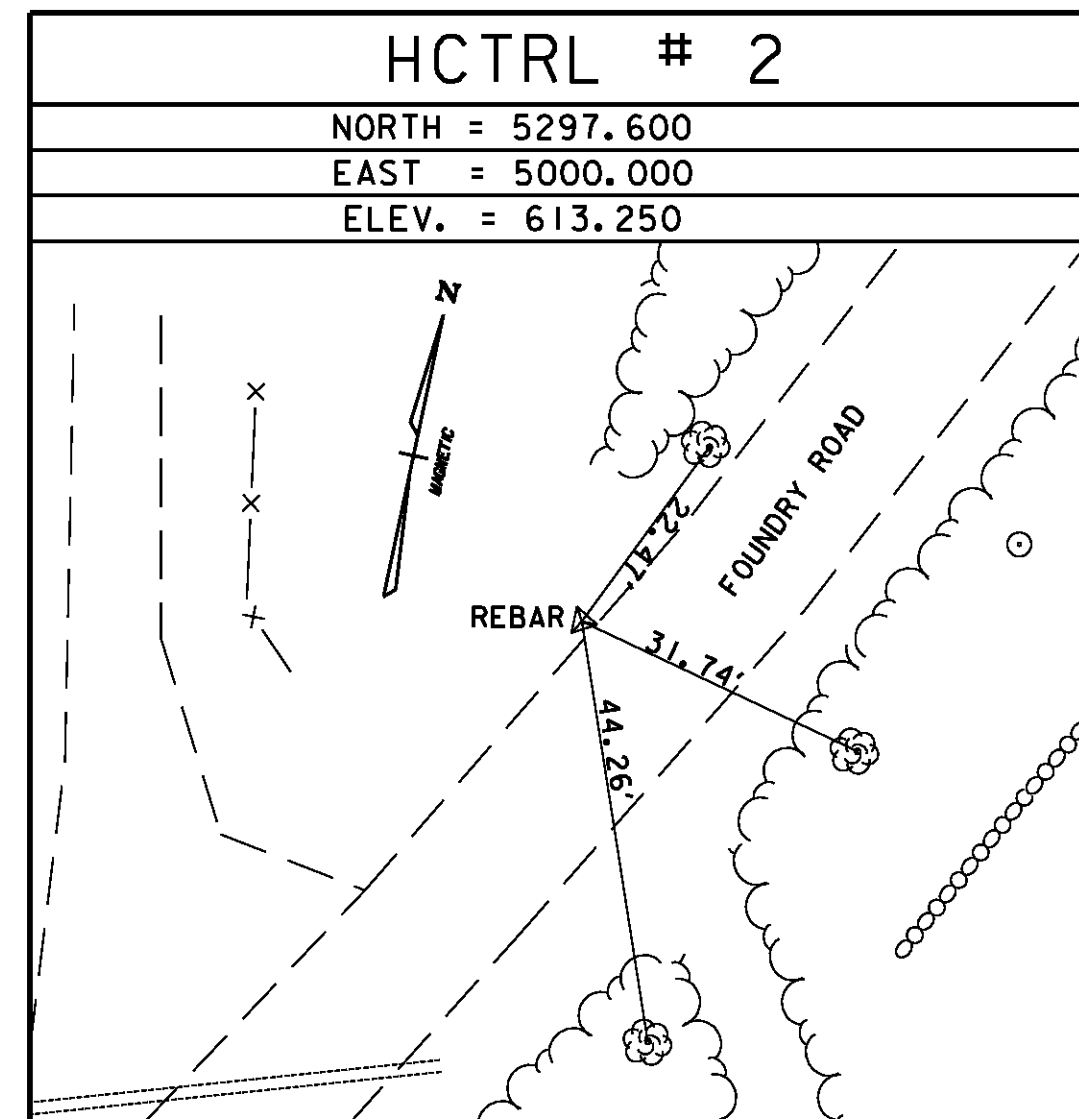
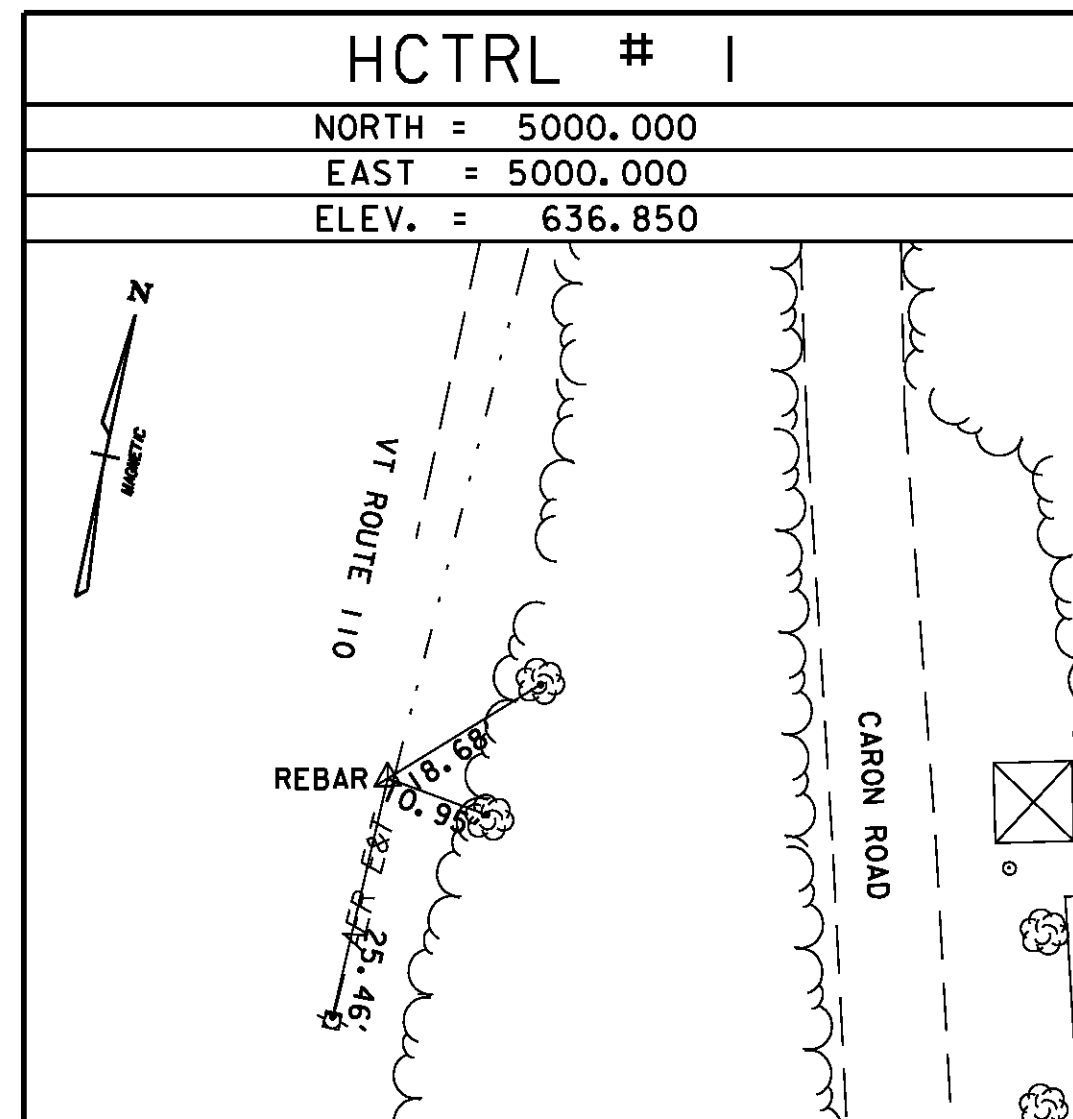
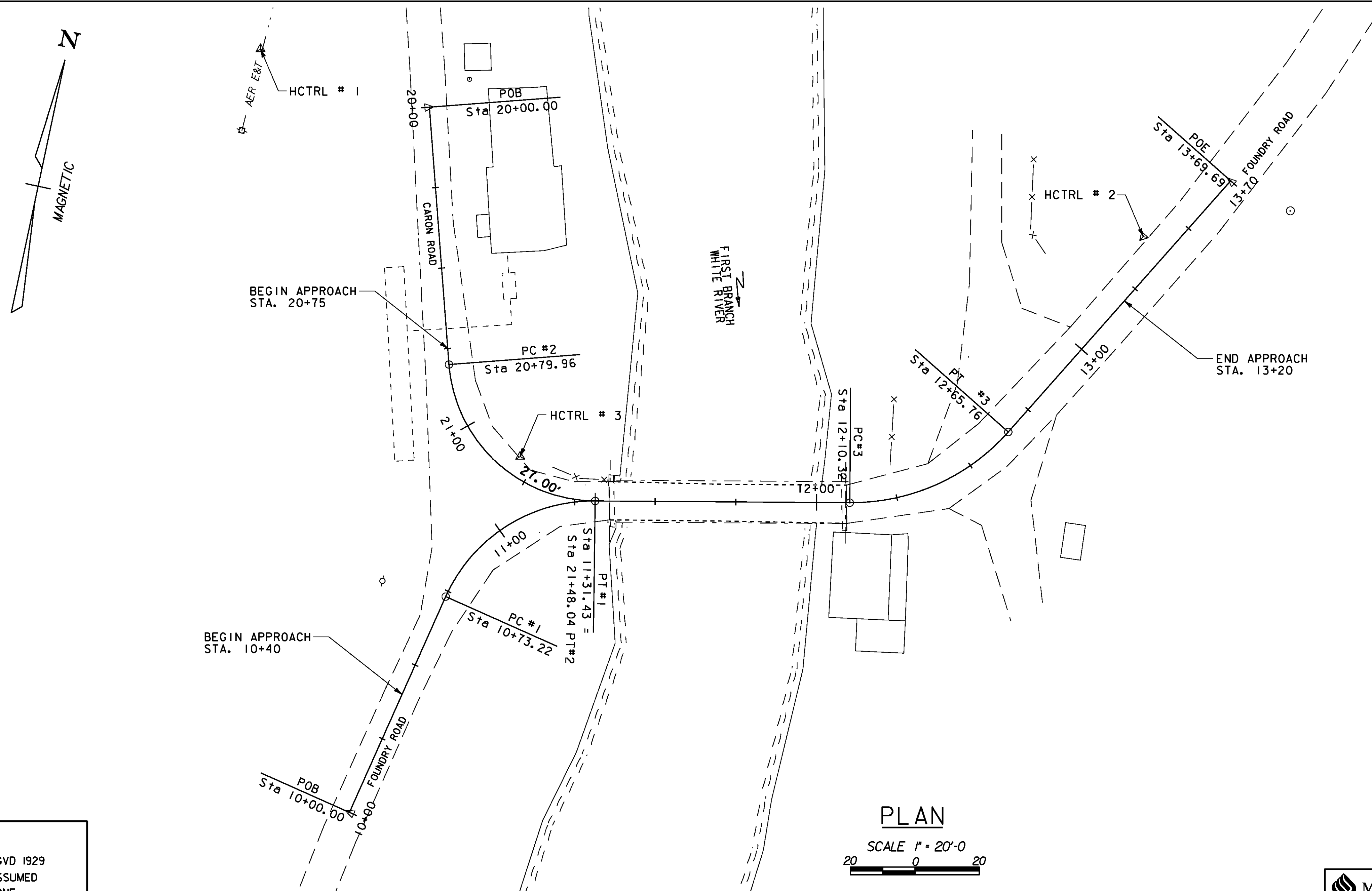


TRAVERSE TIES
& BENCHMARK



ALIGNMENT TIES



COORDINATE TABLE

POINT	STATION	NORTHING	EASTING
BEGIN APPROACH	10+40.00	5084.4585	5186.5122
PC # 1	10+73.22	5091.3872	5154.0247
PT # 1	11+31.43	5130.5292	5115.4154
PC # 3	12+10.32	5207.8040	5099.5348
PT # 3	12+65.76	5251.2807	5067.8937
END APPROACH	13+20.00	5278.0090	5020.6925
BEGIN APPROACH	20+75.00	5076.0318	5078.7212
PC # 2	20+79.96	5077.4283	5083.4806

NOTE: NORTHINGS AND EASTINGS ARE BASED ON ASSUMED COORDINATES.

DATUM
 VERTICAL NGVD 1929
 HORIZONTAL ASSUMED
 ADJUSTMENT NONE

ALIGNMENT STAKED BY:

SHEET NAME: TIE SHEET

PROJECT NAME: TUNBRIDGE
 PROJECT NUMBER: BRO 1444 (39)

FILE NAME: z99j110tie.dgn PLOT DATE: 29-APR-2009
 PROJECT LEADER: K.M. Higgins DRAWN BY: P. Dustin
 DESIGNED BY: S. Della/P. Dustin CHECKED BY: R. Joy
 SHEET 5 OF 32

