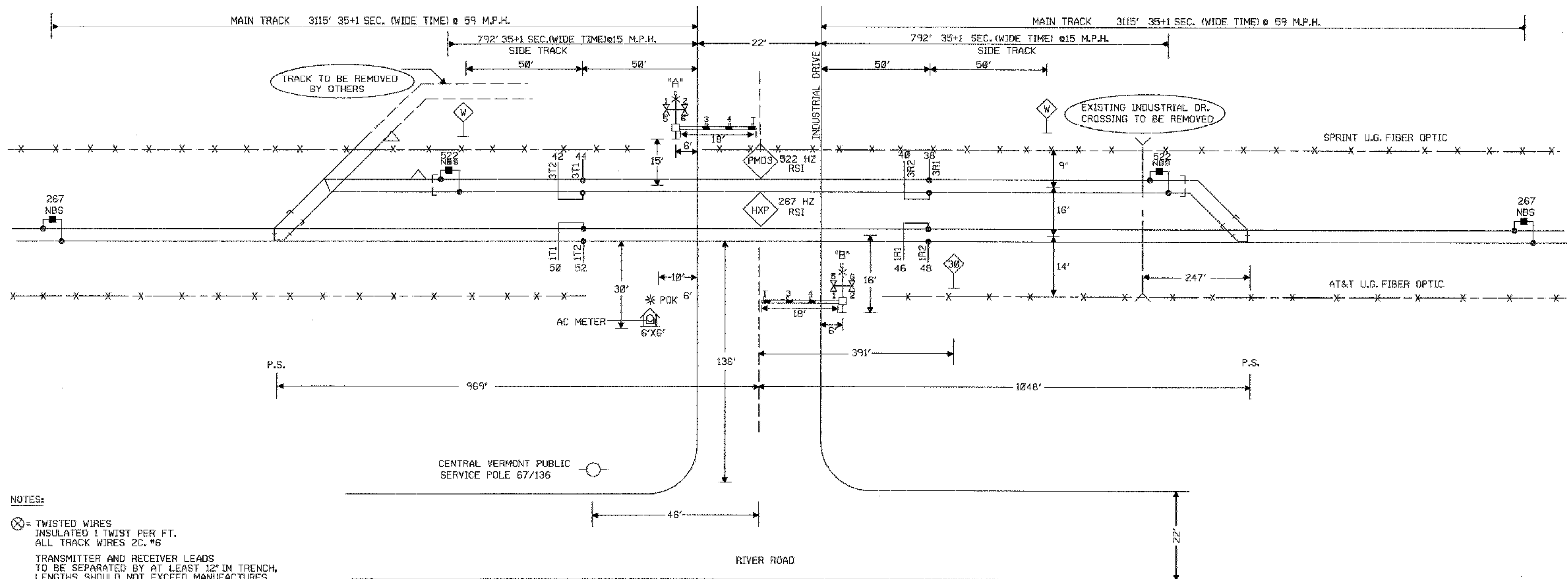


TO WHITE RIVER JCT.

TO MONTPELIER



NOTES:

- ⊗ = TWISTED WIRES INSULATED 1 TWIST PER FT. ALL TRACK WIRES 2C. #6
- TRANSMITTER AND RECEIVER LEADS TO BE SEPARATED BY AT LEAST 12" IN TRENCH, LENGTHS SHOULD NOT EXCEED MANUFACTURERS RECOMMENDATION.
- TOP OF FOUNDATION TO BE AT SAME ELEVATION AS THE SURFACE OF THE TRAVELED WAY & NO MORE THAN 4" ABOVE THE SURFACE OF THE GROUND.
- ALL BUNGALOW WIRING TO BE #16 AWG FLEX UNLESS OTHERWISE SPECIFIED EXCEPT ALL GROUND WIRE TO BE #6 AWG FLEX OR LARGER.
- ALL WIRING IN GATE MECHANISM TO BE #10 AWG FLEX.
- DISTANCES SHOWN HEREIN ARE APPROXIMATE AND ARE NOT TO BE USED FOR CROSSING CONSTRUCTION SURVEYING.

DO NOT USE 7 CELLS OF B14 BATTERY UNLESS REQUIRED TO MAINTAIN MINIMUM LAMP VOLTAGE.

==== 4" X 80' CONDUIT

LIGHTS: 12" LED LIGHTS

GATE A: 18'

GATE B: 18'

ALL THE FOLLOWING WORK WAS DONE BY ECI
NOT PART OF CONTRACT

CONNECTS TO DRAWING

CONNECTS TO DRAWING

DATUM

VERTICAL	NAVD88 ± 0.5 FT.
HORIZONTAL	SFC 1983

ORIGINAL PREPARED:		
DATE	REVISIONS	BY

NOT TO SCALE

DOT# 247-536R

SIGNAL PLAN

PROJECT NAME:	SHARON GRADE CROSSING		
PROJECT NUMBER:	STP2034 (13)S		
FILE NAME:	SHT26.DGN	PLOT DATE:	06/13/03
PROJECT LEADER:	H. PAIEL	DRAWN BY:	A. BOSE
DESIGNED BY:	R. CARROLL	CHECKED BY:	C. SERGOT
		SHEET	25 OF 35