

INDEX OF SHEETS

SHEET NO.	DESCRIPTION
1.	TITLE SHEET
2.	TYPICAL SECTIONS AND DETAILS - SHEET 1 OF 2
3.	TYPICAL SECTIONS AND DETAILS - SHEET 2 OF 2
4.	SUMMARY OF QUANTITIES/EARTHWORK SCHEDULES
5.	QUANTITY SHEET
6.	PLAN LAYOUT SHEET 1 OF 3
7.	PLAN LAYOUT SHEET 2 OF 3
8.	PLAN LAYOUT SHEET 3 OF 3
9.	PROFILE - RIVER ROAD
10.	PROFILE - GRASS LINED SWALE
11.	PROFILE - COMMERCE PARK
12.	EROSION & SEDIMENT CONTROL PLAN SHEET 1 OF 3
13.	EROSION & SEDIMENT CONTROL PLAN SHEET 2 OF 3
14.	EROSION & SEDIMENT CONTROL PLAN SHEET 3 OF 3
15.	TRAFFIC CONTROL/SIGNING/PAVEMENT MARKINGS SHEET 1 OF 3
16.	TRAFFIC CONTROL/SIGNING/PAVEMENT MARKINGS SHEET 2 OF 3
17.	TRAFFIC CONTROL/SIGNING/PAVEMENT MARKINGS SHEET 3 OF 3
18.	TRAFFIC SIGN SUMMARY SHEET
19.	RIGHT-OF-WAY SHEET 1 OF 3
20.	RIGHT-OF-WAY SHEET 2 OF 3
21.	RIGHT-OF-WAY SHEET 3 OF 3
22.	CROSS SECTIONS - COMMERCE PARK/GRASS LINED SWALE SHEET 1 OF 2
23.	CROSS SECTIONS - COMMERCE PARK SHEET 2 OF 2
24.	CROSS SECTIONS - RIVER ROAD (TH3)
25.	SIGNAL PLAN
26.	SIGNAL POWER DISTRIBUTION DIAGRAM
27.	SIGNAL CRTU DIAGRAM
28.	SIGNAL CONTROL UNIT DIAGRAM
29.	CROSSING SIGNAL CIRCUITS DIAGRAM
30.	CROSSING CONTROLLER CIRCUITS DIAGRAM
31.	CROSSING GATE MECHANISM DIAGRAM
32.	SIGNAL HOUSE LAYOUT (WALLS A & B)
33.	SIGNAL HOUSE LAYOUT (WALLS C & D)
34.	SIGNAL CABLE INSTALLATION PLAN
35.	SIGNAL GATE & FLASHER DETAILS

VDOT STANDARDS

B-5	EMBANKMENT ON EARTH SLOPE... TYPICAL SLOPE ROUNDINGS	G-01-94
E-100	CONSTRUCTION APPROACH SIGNS	1-06-97
E-100A	SIDE ROAD CONSTRUCTION - APPROACH SIGNS	1-06-97
E-102	CONSTRUCTION SIGN DETAILS	8-08-95
E-102A	CONSTRUCTION SIGN DETAILS	8-08-95
E-106	TRAFFIC CONTROL - MISCELLANEOUS DETAILS	8-08-95
E-107	DELINEATION, BARRICADES AND DETOURS FOR CONSTRUCTION AREA	8-08-95
E-111	MINOR MAINTENANCE OPERATION	3-11-95
E-121	STANDARD SIGN PLACEMENT CONVENTIONAL ROAD	8-08-95
E-123	GUIDE SIGN PLACEMENT MISCELLANEOUS DETAILS	8-08-95
E-131	GUIDE SIGN DETAILS	8-08-95
E-143	REGULATORY SIGN DETAILS	9-20-95
E-154	WARNING SIGN DETAILS	8-08-95
E-160	FLANGED CHANNEL STEEL SIGN POST	5-20-99
E-164	SQUARE STEEL SIGN POST	5-20-99
E-190	RAILROAD CROSSING SIGNS AND PAVEMENT MARKINGS	8-18-95
E-193	PAVEMENT MARKING DETAILS	8-18-95
G-4	PLANK RAIL GUIDE POSTS, WOOD MARKER POSTS, STEEL MARKER POSTS	6-01-94

CONVENTIONAL SYMBOLS

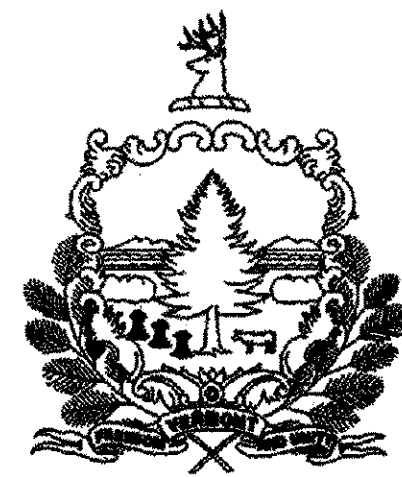
COUNTY LINE	— — — — —	COUNTY LINE
TOWN LINE	— — — — —	TOWN LINE
LIMITS OF ACCESS	— o — o — o — o —	
POINT OF ACCESS	X	
FENCE LINE	X — X — X — X —	
STONE WALL	o — o — o — o — o — o —	
TRAVELED WAY	— — — — —	
GUARD RAIL	o — o — o — o — o —	
RAILROAD	— — — — —	
SURVEY LINE	— — — — —	
CULVERT	— — — — —	
POWER POLE	□	
TELEPHONE POLE	○	
TREES	⊙	
CONTROL OF ACCESS	— // — // — // —	
PROPERTY LINE	— — — — —	
R.O.W. TAKING LINE	— — — — —	
SLOPE RIGHTS	— SR — SR — SR —	
TOP OF CUT	— Δ — Δ — Δ —	
TOE OF SLOPE	— ○ — ○ — ○ —	

PB Parsons, Brinckerhoff, Quade and Douglas, Inc.
75 Arlington St. Boston, MA 02116
PH. (617)426-7330 FAX (617)482-8487

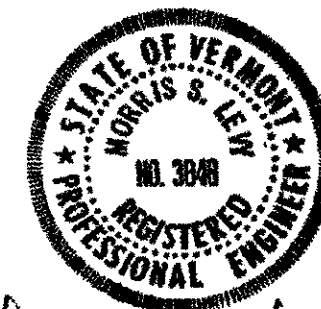
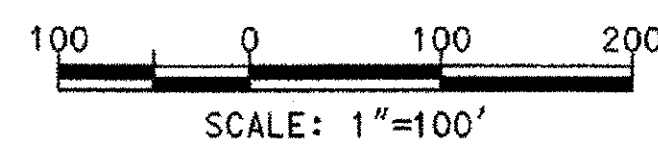
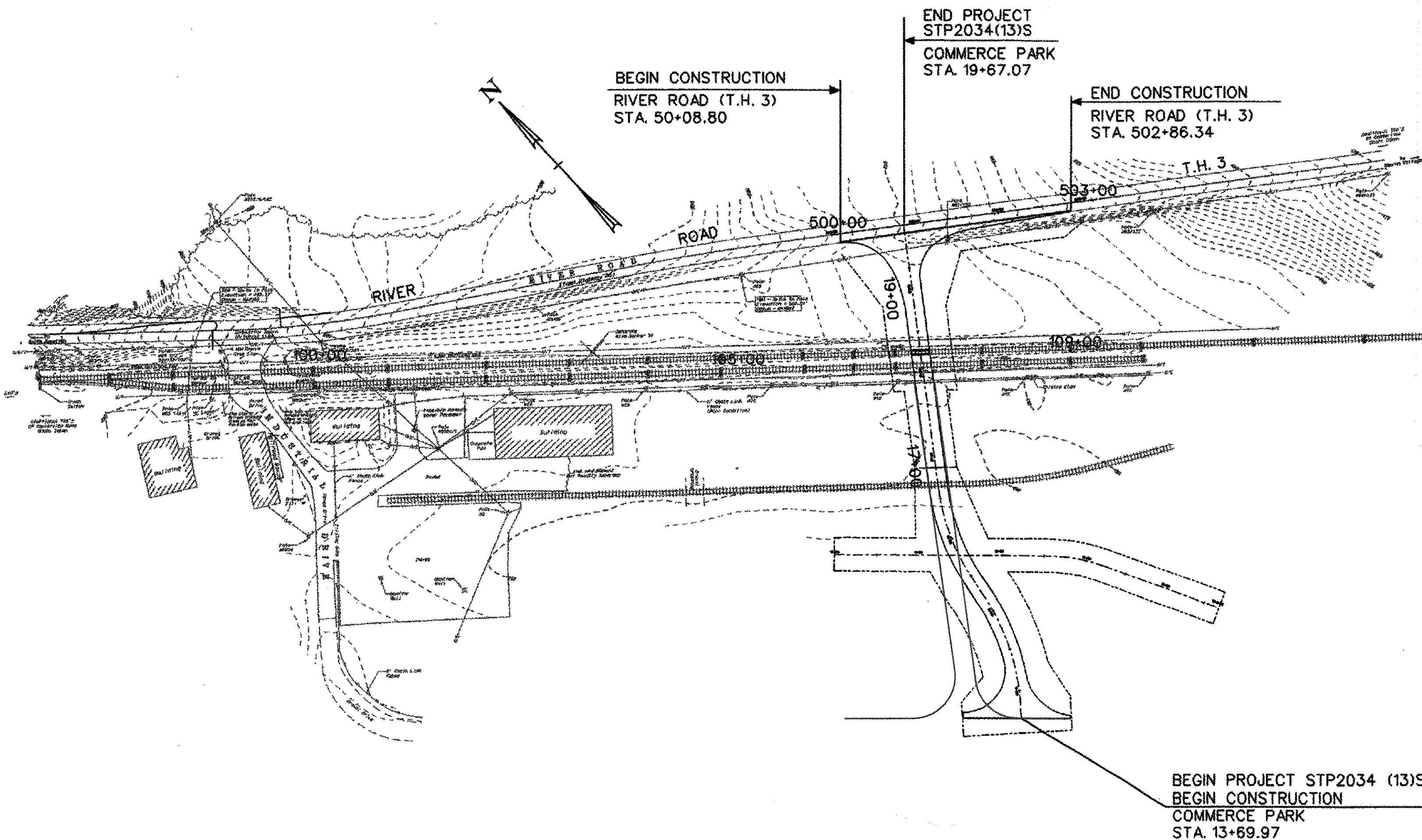
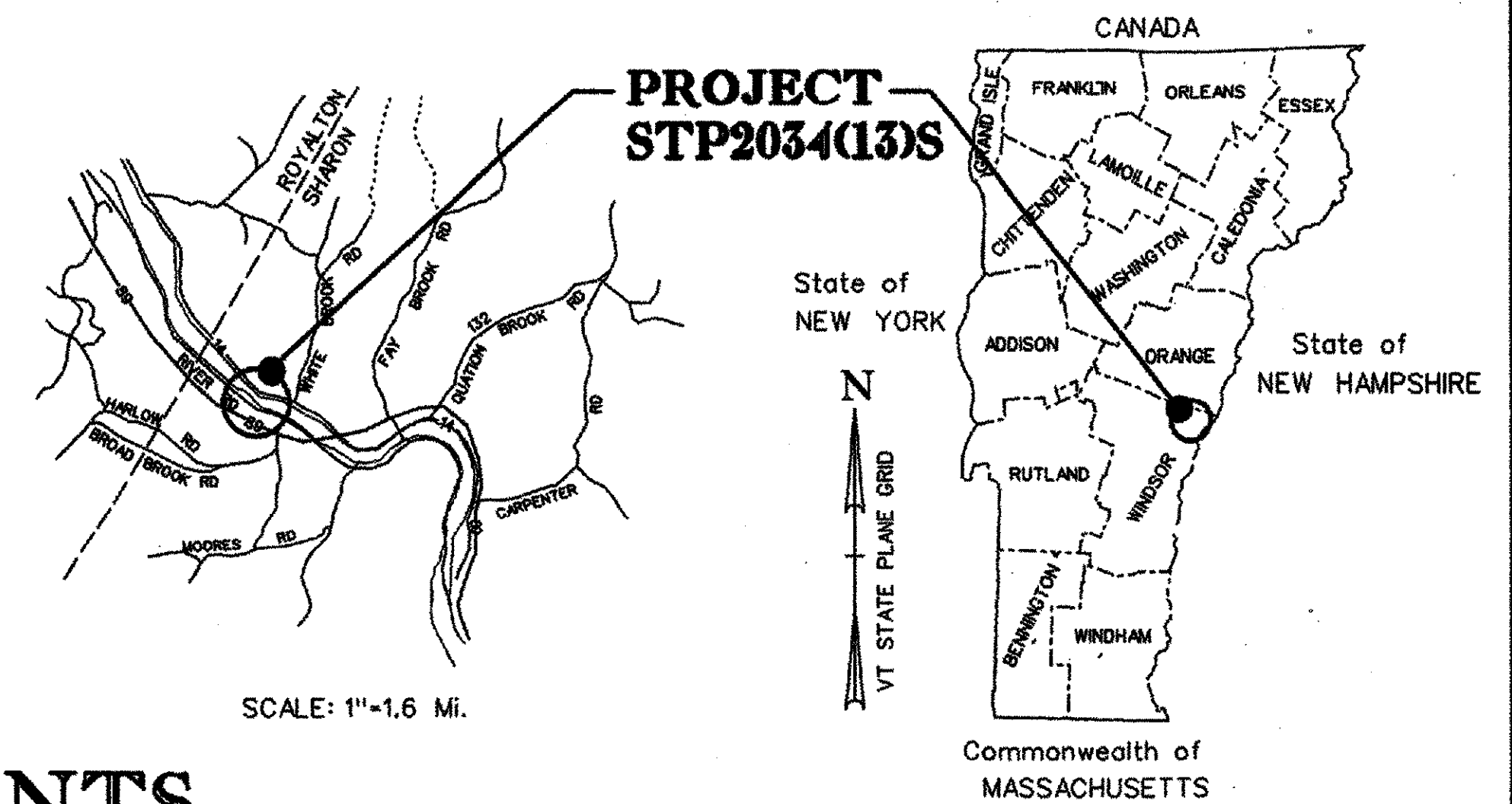
SURVEYED BY : SUMMIT ENGINEERING, INC.
SURVEYED DATE : 2000

DATUM
VERTICAL NAVD88 ± 0.5 FT.
HORIZONTAL SPC1 983

STATE OF VERMONT AGENCY OF TRANSPORTATION



PROPOSED GRADE CROSSING IMPROVEMENTS TOWN OF SHARON



THESE PLANS ARE SUBJECT TO SUCH ENGINEERING CHANGES AS MAY BE REQUIRED BY THE FEDERAL HIGHWAY ADMINISTRATION OR THE DIRECTOR OF PROJECT DEVELOPMENT.
CONSTRUCTION IS TO BE CARRIED ON IN ACCORDANCE WITH THESE PLANS AND THE STANDARD SPECIFICATIONS FOR CONSTRUCTION DATED 2001, AS APPROVED BY THE FEDERAL HIGHWAY ADMINISTRATION ON JANUARY 4, 2001 FOR USE ON THIS PROJECT, INCLUDING ALL SUBSEQUENT REVISIONS AND SUCH REVISED SPECIFICATIONS AND SPECIAL PROVISIONS AS ARE INCORPORATED IN THESE PLANS.

RECORD PLANS	
CONTRACTOR:	DON WESTON EXCAVATING - WILLISTON, VT
RESIDENT ENGINEER:	W. STODDARD
CONSTRUCTION BEGAN:	OCTOBER 11, 2003
CONSTRUCTION COMPLETE:	MAY 20, 2004
RECORD PLANS BY:	W. STODDARD
I HEREBY CERTIFY THAT ALL THE CONSTRUCTION REQUIRED BY THIS SET OF DRAWINGS HAS BEEN ACCOMPLISHED AS INDICATED HEREIN.	
BY:	<i>W. Stoddard</i> RESIDENT ENGINEER
DATE:	12-8-05
NOTE: Any further information concerning final quantities, amounts or other details relative to this project may be found at Central Files in the electronic archives.	

TRAFFIC DATA	
2002 ADT	= 1630
2022 ADT	= 2210
2022 ADTT	= 200

APPROVED: *W. Stoddard* DATE 6/30/02
DIRECTOR OF PROJECT DEVELOPMENT

PROJECT: STP2034 (13)S
SHARON GRADE CROSSING
SHEET 1 OF 35