

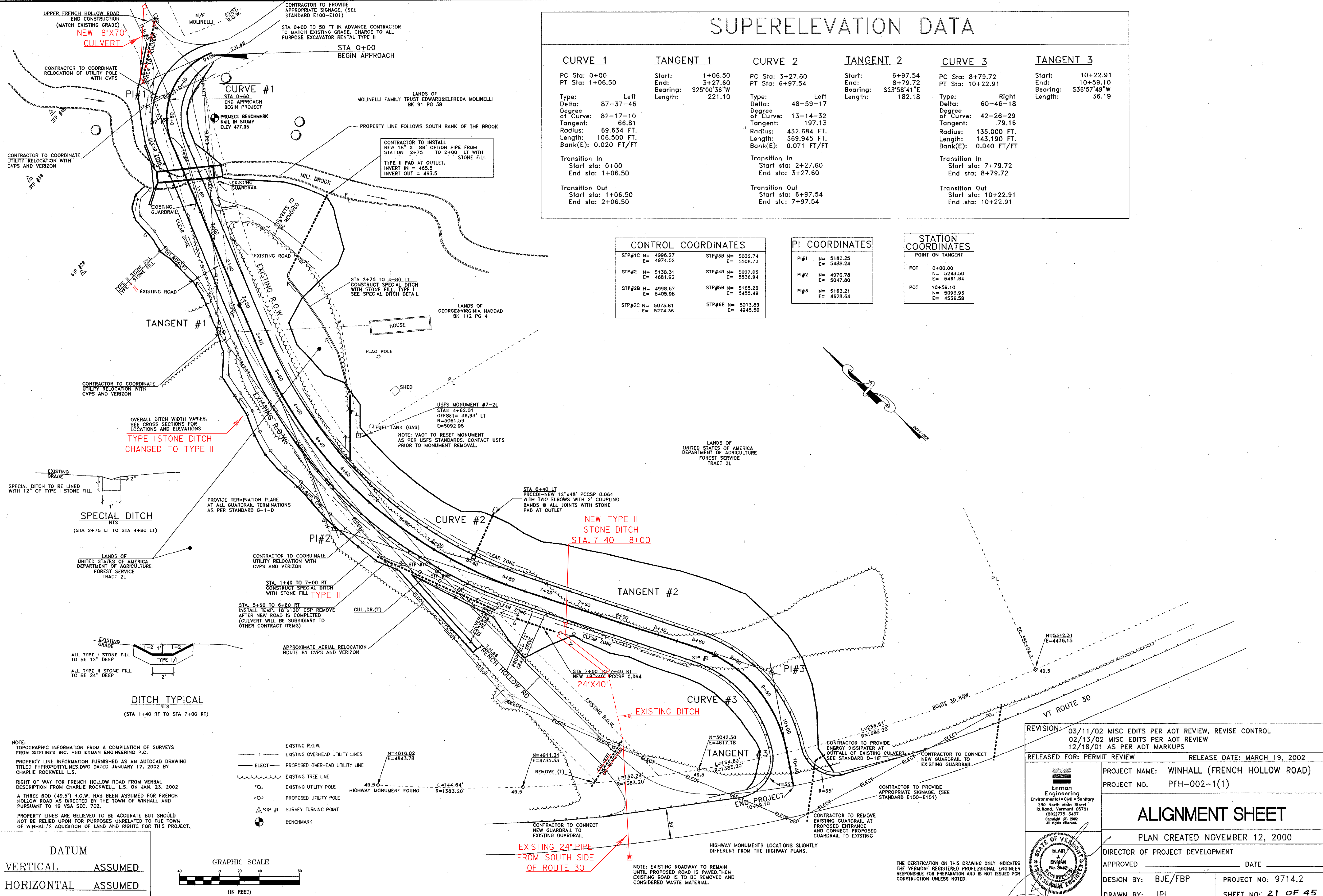
SUPERELEVATION DATA

CURVE 1	TANGENT 1	CURVE 2	TANGENT 2	CURVE 3	TANGENT 3
PC Sta: 0+00 PT Sta: 1+06.50	Start: 1+06.50 End: 3+27.60 Bearing: S25°00'36"W Length: 221.10	PC Sta: 3+27.60 PT Sta: 6+97.54	Start: 6+97.54 End: 8+79.72 Bearing: S23°58'41"E Length: 182.18	PC Sta: 8+79.72 PT Sta: 10+22.91	Start: 10+22.91 End: 10+59.10 Bearing: S36°57'49"W Length: 36.19
Type: Left Delta: 87-37-46 Degree of Curve: 82-17-10 Tangent: 66.81 Radius: 69.634 FT. Length: 106.500 FT. Bank(E): 0.020 FT/FT		Type: Left Delta: 48-59-17 Degree of Curve: 13-14-32 Tangent: 197.13 Radius: 432.684 FT. Length: 369.945 FT. Bank(E): 0.071 FT/FT		Type: Right Delta: 60-46-18 Degree of Curve: 42-26-29 Tangent: 79.16 Radius: 135.000 FT. Length: 143.190 FT. Bank(E): 0.040 FT/FT	
Transition In Start sta: 0+00 End sta: 1+06.50		Transition In Start sta: 2+27.60 End sta: 3+27.60		Transition In Start sta: 7+79.72 End sta: 8+79.72	
Transition Out Start sta: 1+06.50 End sta: 2+06.50		Transition Out Start sta: 6+97.54 End sta: 7+97.54		Transition Out Start sta: 10+22.91 End sta: 10+22.91	

CONTROL COORDINATES	
STP#1C N= 4996.27 E= 4974.02	STP#3B N= 5032.74 E= 5508.73
STP#2 N= 5138.31 E= 4681.92	STP#4D N= 5097.05 E= 5536.94
STP#2B N= 4998.67 E= 5405.98	STP#5B N= 5165.20 E= 5455.49
STP#2C N= 5073.81 E= 5274.36	STP#6B N= 5013.89 E= 4945.50

PI COORDINATES	
PI#1 N= 5182.25 E= 5488.24	PI#2 N= 4976.78 E= 5047.80
PI#3 N= 5163.21 E= 4628.64	

STATION COORDINATES	
POT 0+00.00 N= 5243.50 E= 5481.84	POT 10+59.10 N= 5093.93 E= 4536.58



NOTE: TOPOGRAPHIC INFORMATION FROM A COMPILATION OF SURVEYS FROM SITESINES INC. AND ENMAN ENGINEERING P.C.

PROPERTY LINE INFORMATION FURNISHED AS AN AUTOCAD DRAWING TITLED FHPROPERTYLINES.DWG DATED JANUARY 17, 2002 BY CHARLIE ROCKWELL L.S.

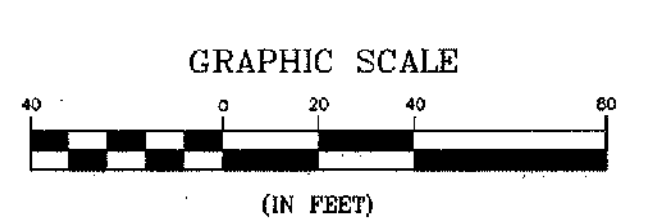
RIGHT OF WAY FOR FRENCH HOLLOW ROAD FROM VERBAL DESCRIPTION FROM CHARLIE ROCKWELL, L.S. ON JAN. 23, 2002

A THREE ROD (49.5') R.O.W. HAS BEEN ASSUMED FOR FRENCH HOLLOW ROAD AS DIRECTED BY THE TOWN OF WINHALL AND PURSUANT TO 19 VSA SEC. 702.

PROPERTY LINES ARE BELIEVED TO BE ACCURATE BUT SHOULD NOT BE RELIED UPON FOR PURPOSES UNRELATED TO THE TOWN OF WINHALL'S ACQUISITION OF LAND AND RIGHTS FOR THIS PROJECT.

- EXISTING R.O.W.
- EXISTING OVERHEAD UTILITY LINES
- ELECT - PROPOSED OVERHEAD UTILITY LINE
- EXISTING TREE LINE
- EXISTING UTILITY POLE
- PROPOSED UTILITY POLE
- STP #1 - SURVEY TURNING POINT
- BENCHMARK

DATUM
VERTICAL ASSUMED
HORIZONTAL ASSUMED



REVISION: 03/11/02 MISC EDITS PER AOT REVIEW, REVISE CONTROL
02/13/02 MISC EDITS PER AOT REVIEW
12/18/01 AS PER AOT MARKUPS

RELEASED FOR: PERMIT REVIEW RELEASE DATE: MARCH 19, 2002

PROJECT NAME: WINHALL (FRENCH HOLLOW ROAD)
PROJECT NO. PFH-002-1(1)

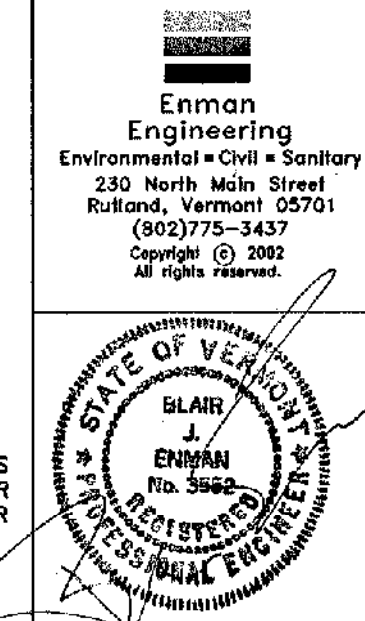
ALIGNMENT SHEET

PLAN CREATED NOVEMBER 12, 2000

DIRECTOR OF PROJECT DEVELOPMENT

APPROVED _____ DATE _____

DESIGN BY: BJE/FBP PROJECT NO: 9714.2
DRAWN BY: JPL SHEET NO: 21 OF 45



THE CERTIFICATION ON THIS DRAWING ONLY INDICATES THE VERMONT REGISTERED PROFESSIONAL ENGINEER RESPONSIBLE FOR PREPARATION AND IS NOT ISSUED FOR CONSTRUCTION UNLESS NOTED.

9714.2.DWG LAYOUT.LAY VIEW= ALIGNMENT