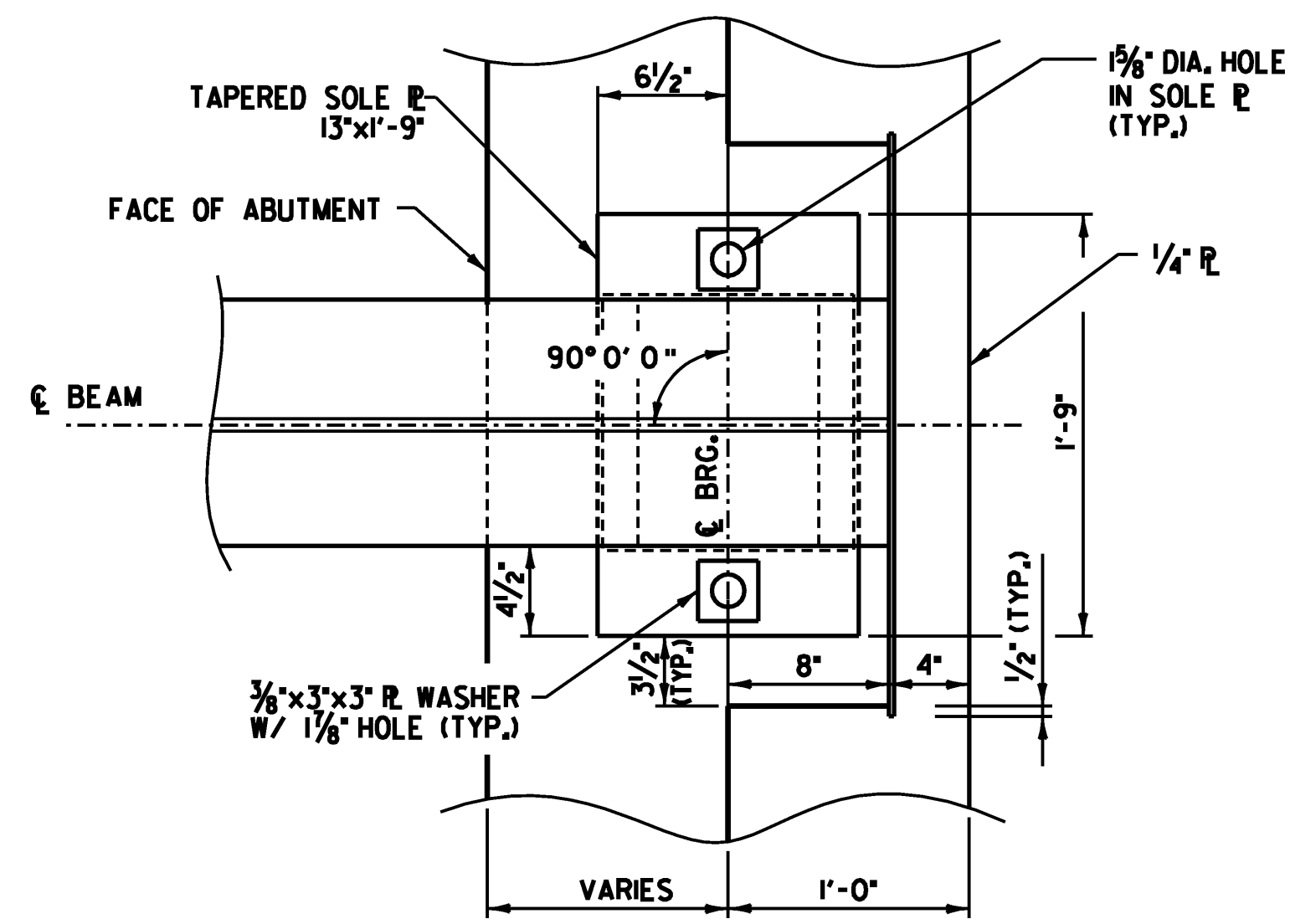


**ABUTMENT NO. 1**

**PLAN**

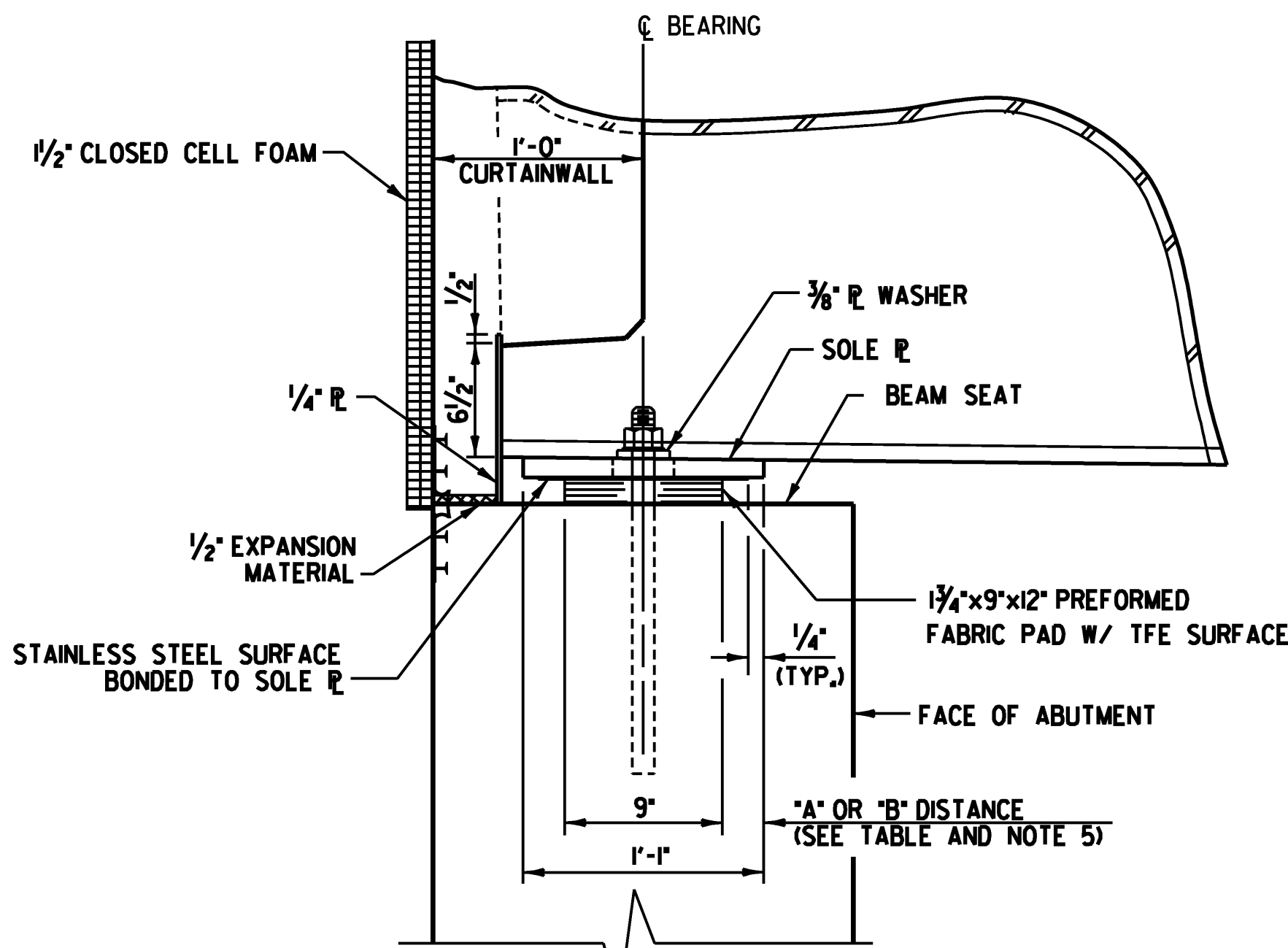
SCALE 1 1/2" = 1'-0"



**ABUTMENT NO. 2**

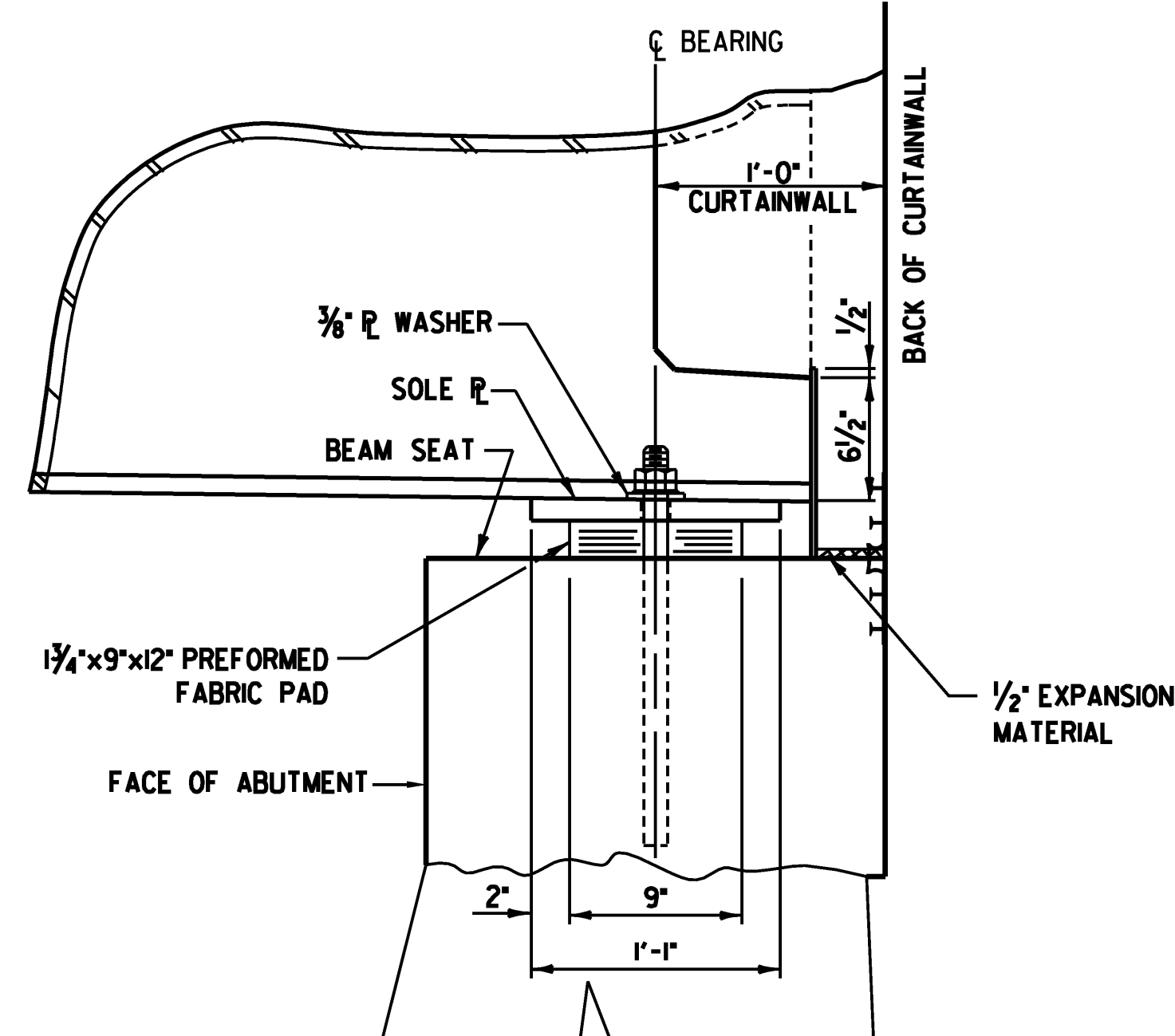
**BEARING NOTES:**

1. BEARINGS SHALL CONFORM TO APPLICABLE SUBSECTIONS OF THE STANDARD SPECIFICATION SECTIONS 531 AND 731.
  2. BEARINGS SHALL BE PAID FOR UNDER THE ITEM 531.00 "BEARING DEVICE ASSEMBLY, PREFORMED FABRIC PAD".
  3. FABRICATION DRAWINGS CONFORMING TO STANDARD SPECIFICATIONS SUBSECTION 531.03 SHALL BE SUBMITTED TO INCLUDE WELDING AND BONDING PROCEDURES.
  4. THE CONCRETE SURFACE UNDER THE BEARING DEVICE SHALL BE LEVEL.
  5. THE "A" DISTANCE IS LISTED FOR SETTING THE BEARING AFTER THE STRUCTURAL STEEL IS ERECTED AND BEFORE THE CONCRETE DECK IS POURED. THE "B" DISTANCE IS THE FINAL SETTING FOR THE BEARING PAD AFTER THE CONCRETE SLAB, CURB, PAVEMENT, AND BRIDGE RAIL ARE PLACED. THE DIFFERENCE IS THE THEORETICAL ELONGATION OF THE BOTTOM FLANGE DUE TO DEAD LOAD DEFLECTION. THE FINAL "B" DISTANCE, AS SHOWN IN THE TABLE, MUST BE ATTAINED WITHIN 1/8".
  6. DESIGN CRITERIA:
    - A. BASE PLATE TO CONCRETE DESIGN PRESSURE = 1000 P.S.I. MAXIMUM.
    - B. MAXIMUM ALLOWABLE DESIGN ROTATION = 0.015 RADIANS.
    - C. HORIZONTAL CAPACITY SHALL BE A MINIMUM OF 10% OF THE VERTICAL LOAD.
    - D. DESIGN LOAD PER BEARING = 105.3 KIPS.
  7. ALL STEEL IN BEARING DEVICES (EXCEPT STAINLESS STEEL) SHALL BE AASHTO M270M / M270, GRADE 36.
  8. ANCHOR BOLTS SHALL HAVE A MINIMUM OF 1'-3" EMBEDMENT INTO THE CONCRETE AND SHALL CONFORM TO SUBSECTION 714.08.
  9. ALL THE ANCHOR BOLTS, NUTS AND WASHERS SHALL BE GALVANIZED. ALL WASHERS SHALL BE 3/8" PLATE (MINIMUM). PAYMENT FOR ANCHOR BOLTS, NUTS AND WASHERS SHALL BE INCLUDED IN THE UNIT BID PRICE FOR ITEM 531.00.
  10. BEARING DEVICES SHALL BE GALVANIZED OR METALIZED AS PER SUBSECTIONS 531.04(b) AND 506.15(a) AND (b). AREAS OF DAMAGED GALVANIZING SHALL BE COATED IN ACCORDANCE WITH ASTM A 760/A 760M AND A 780. AREAS OF DAMAGED METALIZING SHALL BE COATED WITH THE SAME SEALANT USED BY THE BEARING SUPPLIER.
11. EXISTING STEEL ANCHOR BOLTS OR REINFORCING TO BE TERMINATED SHALL BE REMOVED 1' BELOW THE SURFACE OF ANY EXPOSED FACE.

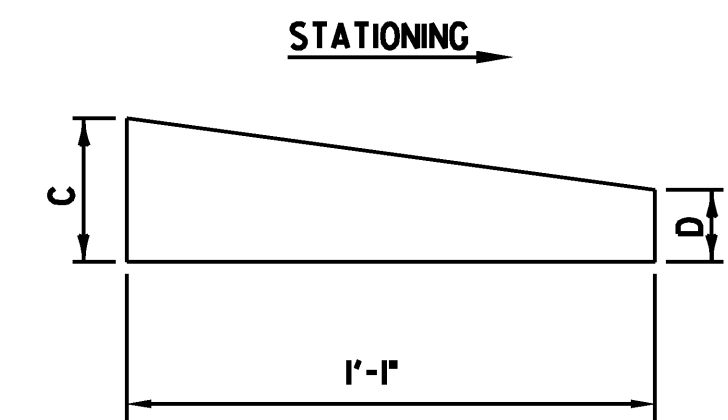


**SIDE ELEVATION**

SCALE 1 1/2" = 1'-0"



**FIXED BEARING DETAILS @ ABUTMENT NO. 2**



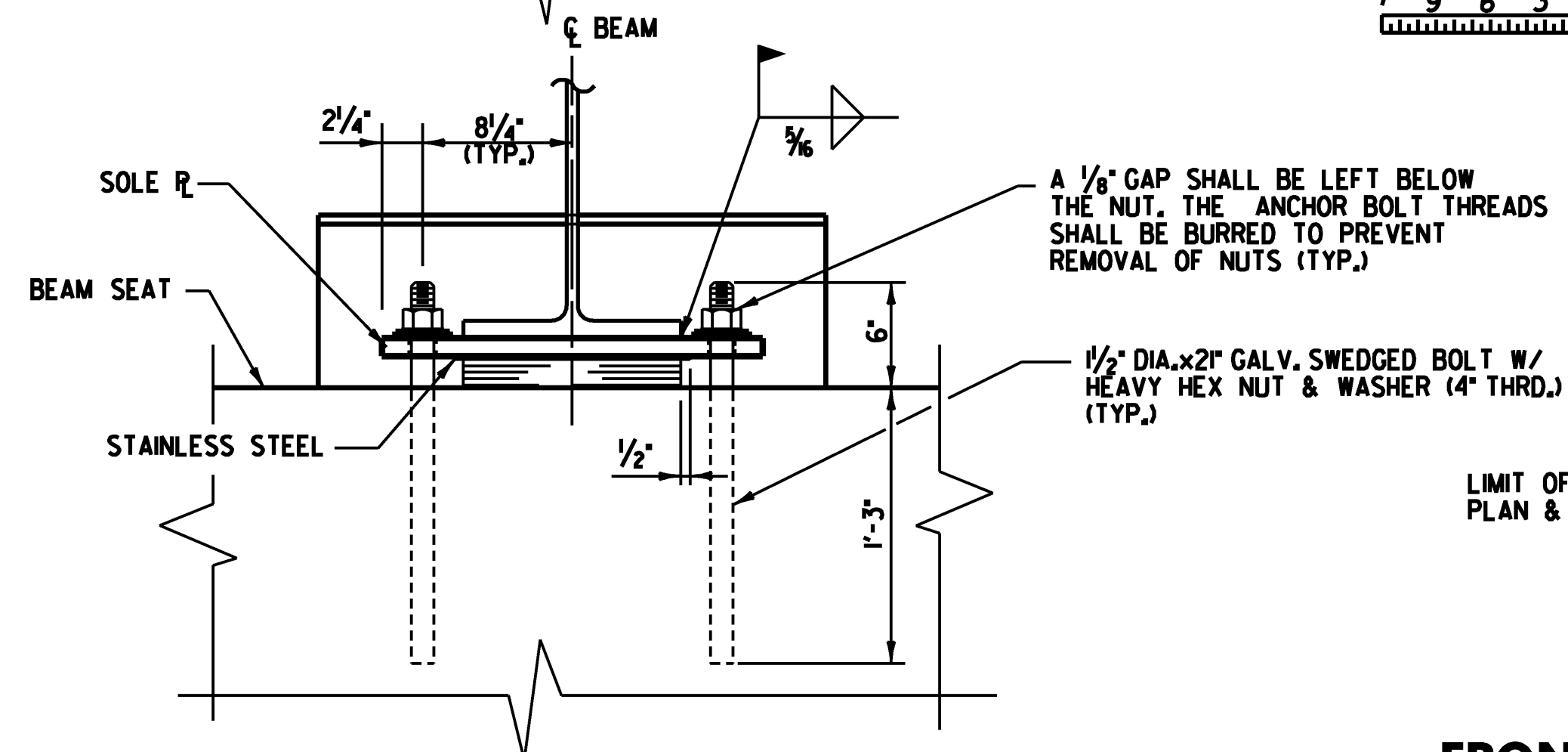
**TAPERED SOLE PLATE**

N.T.S.

SOLE PLATE TABLE		
LOCATION	C	D
ABUTMENT #1	1 1/8"	1"
ABUTMENT #2	1 1/8"	1"

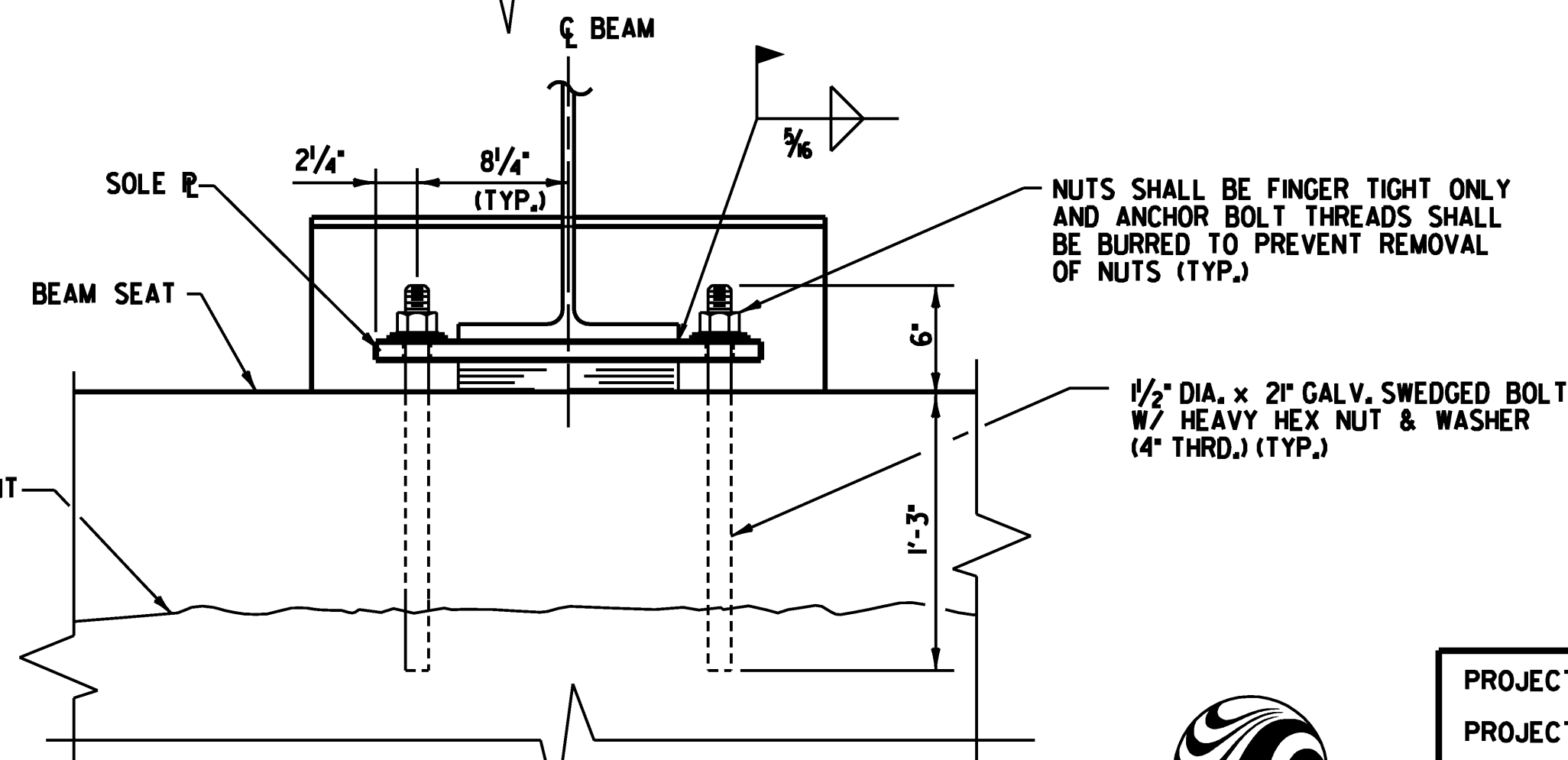
**TEMPERATURE ADJUSTMENT TABLE**

ABUTMENT NO. 1		
TEMP.	DIM. "A"	DIM. "B"
0°F	2 5/8"	2 3/8"
15°F	2 3/8"	2 1/4"
30°F	2 1/2"	2 1/8"
45°F	2 3/8"	2 1/8"
60°F	2 3/8"	2 1/8"
75°F	2 1/4"	2"
90°F	2 3/8"	1 7/8"
105°F	2 1/8"	1 7/8"



**FRONT VIEW**

SCALE 1 1/2" = 1'-0"



**EXPANSION BEARING DETAILS @ ABUTMENT NO. 1**



PROJECT NAME: CLARENDON  
PROJECT NUMBER: BHO 1443 (39)

FILE NAME: ...Drawing\21-clar-bearings.dgn PLOT DATE: 7/2/2009  
PROJECT LEADER: MJC DRAWN BY: TEK  
DESIGNED BY: TEK CHECKED BY: GAB  
BEARING DETAILS SHEET 21 OF 24