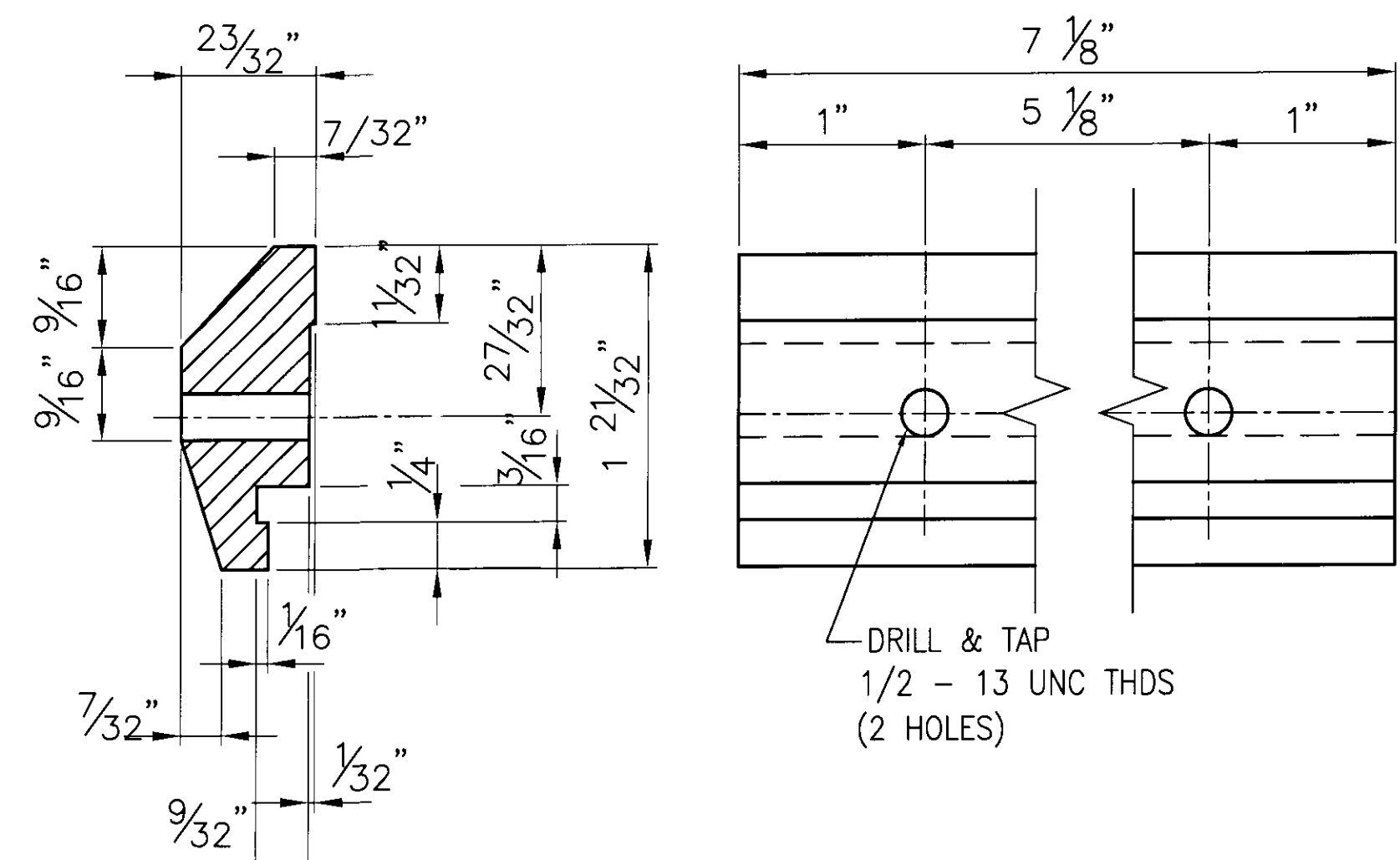
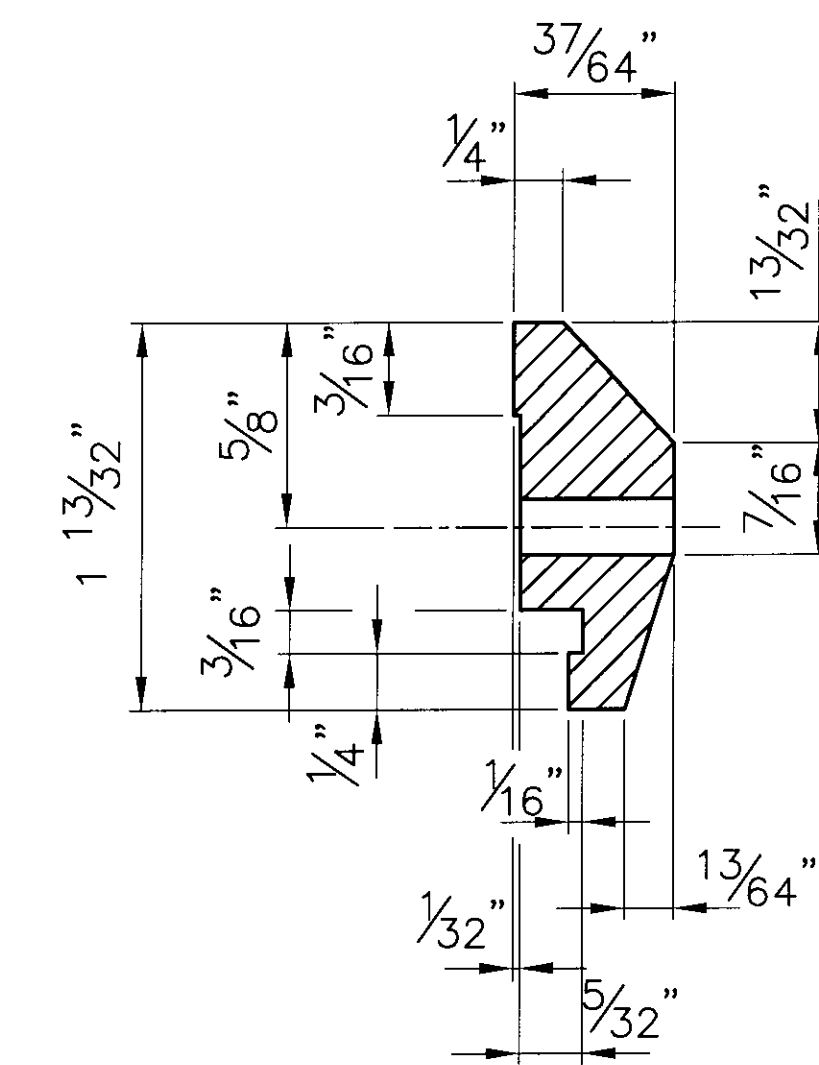


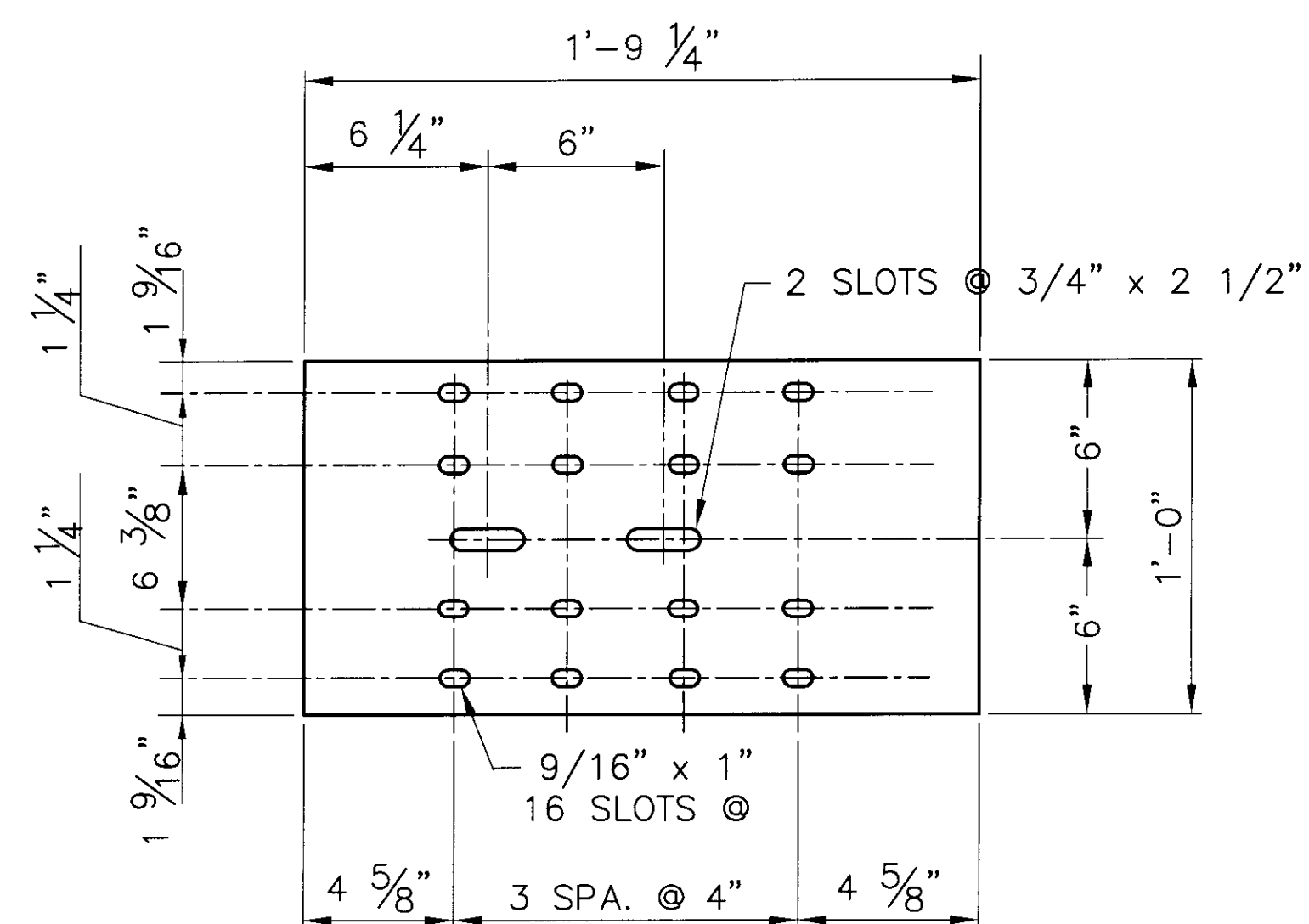
**14 ~ REQ'D. ALUM
END CAPS EC2**
#19345



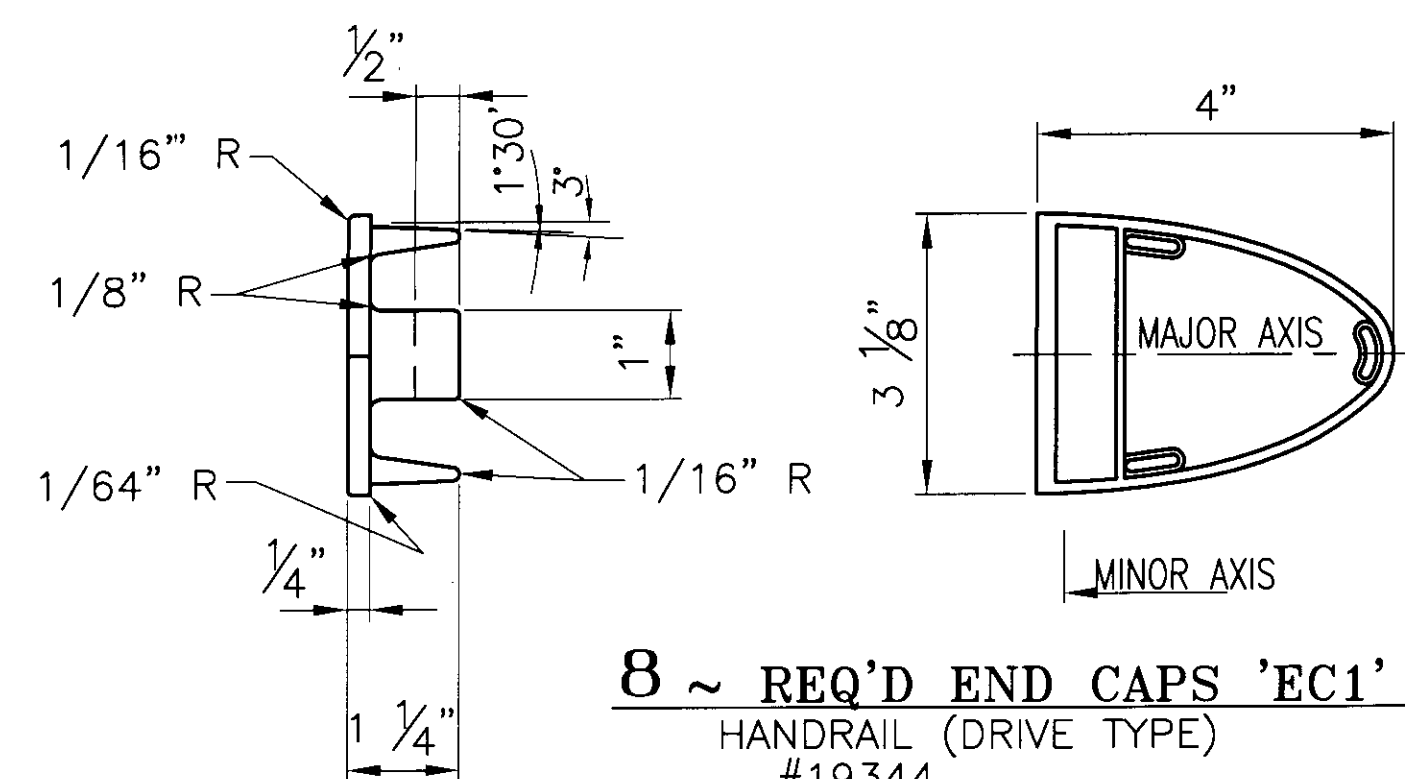
**116 ~ REQ'D CLAMP
BAR CB-03-A**
(BARRIER RAIL - 4 PER POST)
#19447



**40 ~ REQ'D CLAMP
BAR CB-01-H**
(HANDRAIL - 2 PER POST)
#28596



ONE REQ'D. ~ BACK-UP PLATE BUP1
(1/4" THK. PLATE ~ A36 - GALV.)



8 ~ REQ'D END CAPS 'EC1'
HANDRAIL (DRIVE TYPE)
#19344

ANODIZED
(SEE NOTES ON LB1)

BRIDGE No. 5
PROJECT No. BHO 1448 (29) ITEM No: 900.640

APPROVED: _____ REC'D APPROVAL _____
DRAWING _____

L.B. FOSTER COMPANY
1016 GREENTREE ROAD
PITTSBURGH, PENNSYLVANIA 15220

FOR: F. R. LAFAYETTE, INCORPORATED
VERMONT AGENCY OF TRANSPORTATION
TOWN OF JOHNSON, COUNTY OF LAMOILLE
APPROACH RAILING FOR TH No 1 OVER THE GIRON RIVER
3L ALUMINUM APPROACH RAIL ~ MISC DETAILS

MADE CMS DATE 10/26/09 JOB No. AR0573 CUST. No.
CHECK BLJ DATE 11/09/09 DRAWING LB14 (LAST) REV. No.

REV.	DESCRIPTION	BY	DATE