

OFFSET BLOCK DETAIL CHART FOR NE-SW APPROACHES

		OFFSET BLOCK MTG. DIMENSIONS							BEV
POST No.	QTY.	A	B	C	D	E	F (O.C.)	G	X
P11	1	2'-7 1/8"	2'-2 1/16"	1'-1 3/8"	1 7/8"	5/8"	2'-6 13/16"	1 1/4"	1
P12	1	2'-4 13/16"	1'-11 3/4"	11 11/16"	1 7/8"	5/8"	2'-4 1/2"	1 1/4"	1
P13	1	2'-2 9/16"	1'-9 7/16"	10"	1 7/8"	5/8"	2'-2 1/4"	1 1/4"	1
P14	1	2'-0 1/4"	1'-7 1/8"	8 5/16"	1 7/8"	5/8"	1'-11 15/16"	1 1/4"	1
P22	1	2'-7 3/4"	2'-2 3/8"	1'-1 5/8"	2 3/16"	1 3/16"	2'-7 3/16"	1"	2
P23	1	2'-5 11/16"	2'-0 5/16"	11 15/16"	2 3/16"	1 3/16"	2'-5 1/8"	1"	2
P24	1	2'-3 5/8"	1'-10 3/16"	10 1/4"	2 3/16"	1 3/16"	2'-3"	1"	2
P25	1	2'-1 1/2"	1'-8 1/8"	8 5/8"	2 3/16"	1 3/16"	2'-0 15/16"	1"	2

OFFSET BLOCK ~ RAIL MTG. DIMENSIONS

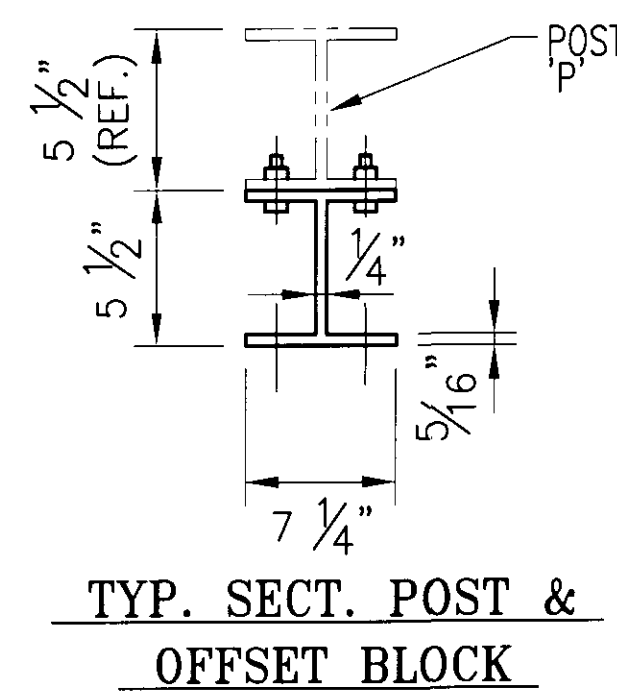
POST No.	OFFSET BLOCK	H	J	K	L	M	N
P11	OB11	1 1/16"	1'-0 7/16"	2'-1 1/8"	7/8"	1'-0"	2'-0 5/8"
P12	OB12	1 1/16"	10 3/4"	1'-10 13/16"	7/8"	10 5/16"	1'-10 5/16"
P13	OB13	1 1/16"	9 1/16"	1'-8 9/16"	7/8"	8 5/8"	1'-8 1/16"
P14	OB14	1 1/16"	7 3/8"	1'-6 1/4"	7/8"	6 15/16"	1'-5 3/4"
P22	OB22	1 1/8"	1'-0 7/16"	2'-1 1/4"	3/4"	11 7/8"	2'-0 9/16"
P23	OB23	1 1/8"	10 13/16"	1'-11 13/16"	3/4"	10 3/16"	1'-10 1/2"
P24	OB24	1 1/8"	9 1/8"	1'-9 1/16"	3/4"	8 1/2"	1'-8 3/8"
P25	OB25	1 1/8"	7 7/16"	1'-7"	3/4"	6 13/16"	1'-6 5/16"

OFFSET BLOCK DETAIL CHART FOR NE APPROACH

		OFFSET BLOCK MTG. DIMENSIONS						BEV
POST No.	QTY.	A	B	C	D	E	F (O.C.)	X
P15	1	1'-5 5/16"	1'-0 1/4"	2 3/16"	5/16"	1 7/8"	1'-5 3/16"	1/2
P16	1	1'-4 5/8"	11 1/2"	2 3/16"	5/16"	1 7/8"	1'-4 7/16"	1/2
P17	1	1'-3 7/8"	10 3/4"	2 3/16"	5/16"	1 7/8"	1'-3 11/16"	1/2

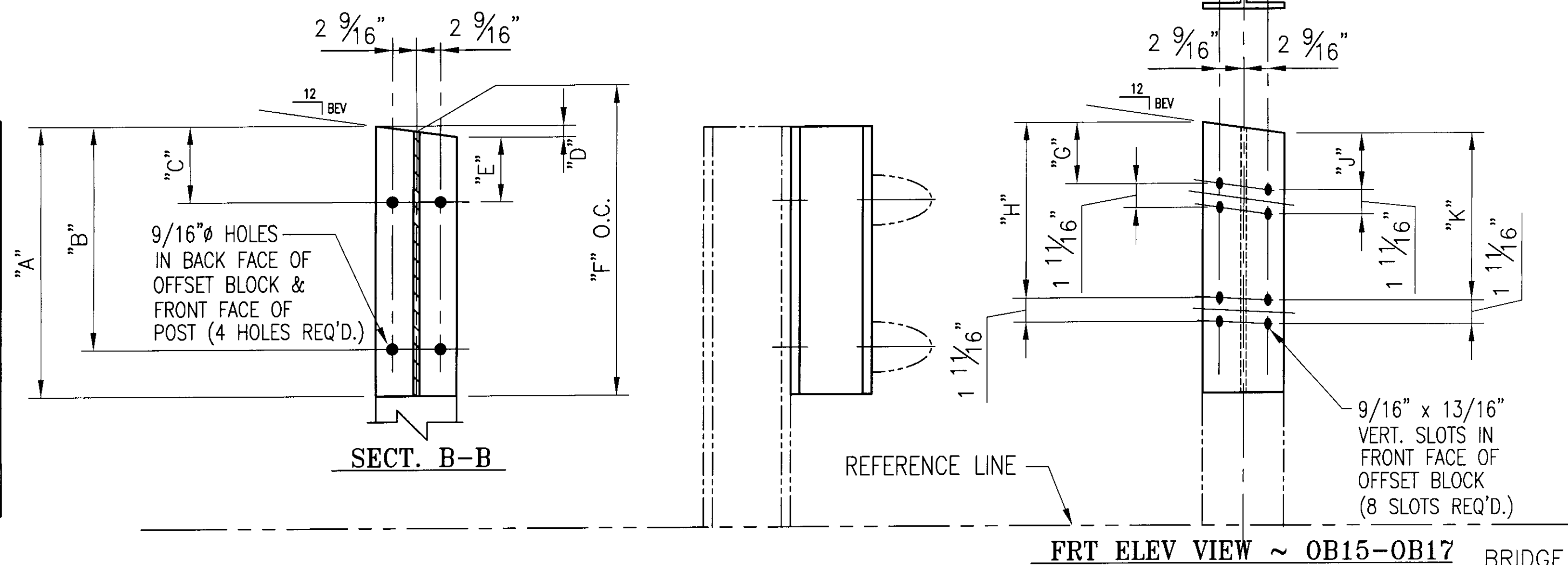
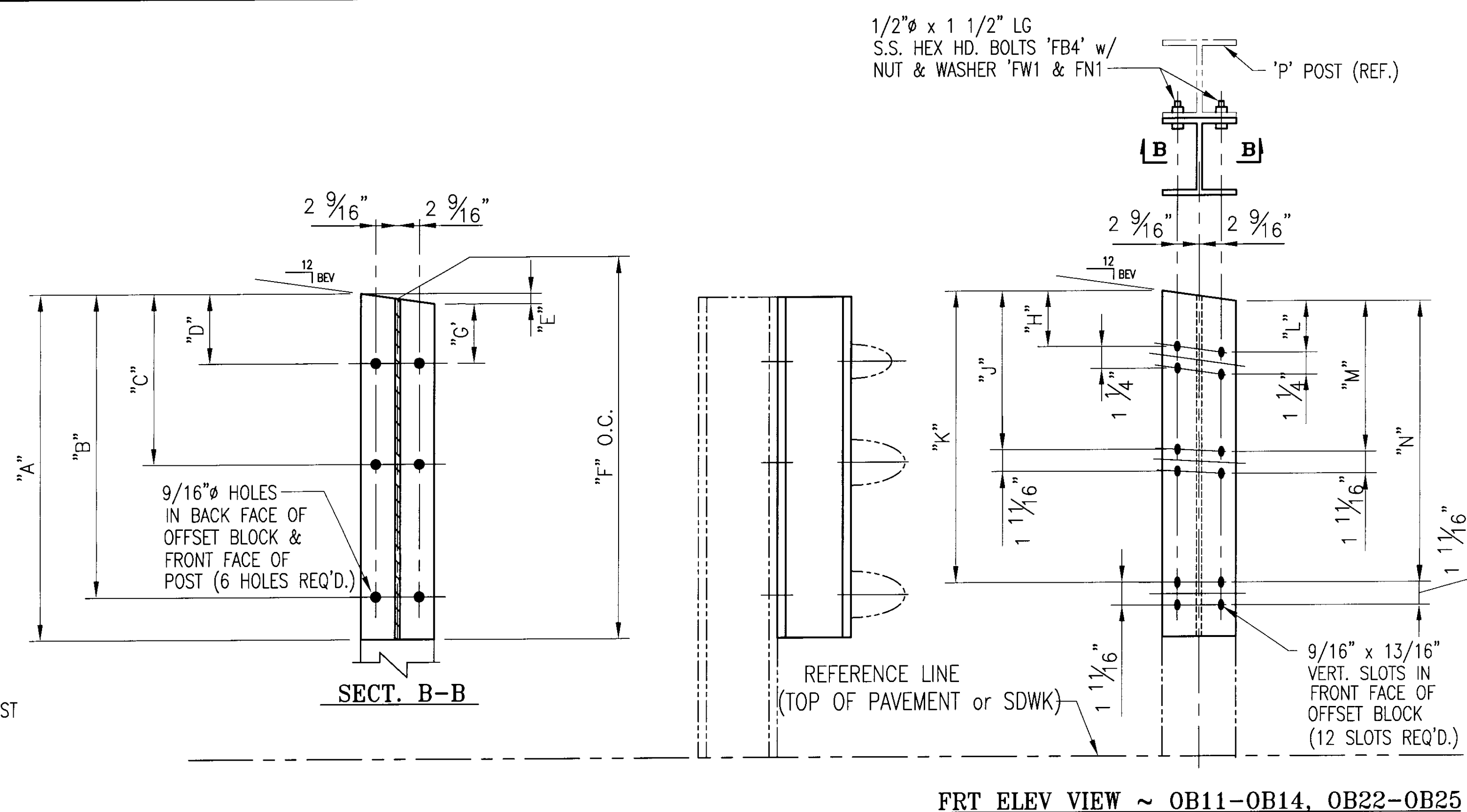
OFFSET BLOCK ~ RAIL MTG. DIMENSIONS

POST No.	OFFSET BLOCK	G	H	J	K
P15	OB15	1 3/16"	11 5/16"	1 1/8"	11 3/16"
P16	OB16	1 3/16"	10 5/8"	1 1/8"	10 7/16"
P17	OB17	1 3/16"	9 7/8"	1 1/8"	9 11/16"



NOTE:
 2 CLAMPING BARS CB-01-H (#28596) PER POSTS P1- P4, P8 - P11
 4 CLAMPING BARS CB-03-A (#19447) PER POSTS P1- P4, P8 - P11
 w/ 1/2"φ-13 UNC S.S. BOLT x 1" LG. 'FB1', 1 1/16" O.D. x 17/32" I.D. x 3/32" THK. ALUM WASHER 'FW1' (#15280 & #19404) (16 PER POST)

NOTE:
 4 CLAMPING BARS CB-03-A (#19447) PER POSTS P1 - P4, P8 - P11
 w/ 1/2"φ-13 UNC S.S. BOLT x 1" LG. 'FB1', 1 1/16" O.D. x 17/32" I.D. x 3/32" THK. ALUM WASHER 'FW1' (#15280 & #19404) (8 PER POST)



1/2"φ x 1 1/2" LG S.S. HEX HD. BOLTS 'FB4' w/ NUT & WASHER 'FW1 & FN1' 'P' POST (REF.)

1/2"φ x 1 1/2" LG S.S. HEX HD. BOLTS 'FB4' w/ NUT & WASHER 'FW1 & FN1' 'P' POST (REF.)

BRIDGE No. 5
 PROJECT No. BHO 1448 (29) ITEM No: 900.640

APPROVED: _____ REC'D APPROVAL _____
 DRAWING _____

L.B. FOSTER COMPANY
 1016 GREENTREE ROAD
 PITTSBURGH, PENNSYLVANIA 15220

FOR: F. R. LAFAYETTE, INCORPORATED
 VERMONT AGENCY OF TRANSPORTATION
 TOWN OF JOHNSON, COUNTY OF LAMOILLE
 APPROACH RAILING FOR TH No 1 OVER THE GIHON RIVER
 OFFSET BOX DETAILS

MADE CMS DATE 10/24/09 JOB No. AR0573 CUST. No.
 CHECK BLJ DATE 11/06/09 DRAWING LB7 REV. No.

ANODIZED
 (SEE NOTES ON LB1)

REV.	DESCRIPTION	BY	DATE