

OFFSET BLOCK DETAIL CHART FOR NW-SE APPROACHES

		OFFSET BLOCK MTG. DIMENSIONS							BEV
POST No.	QTY.	A	B	C	D	E	F (O.C.)	G	X
P1	1	2'-7 3/16"	2'-2 1/8"	1'-1 3/8"	1 7/8"	9/16"	2'-6 7/8"	1 5/16"	15/16
P2	1	2'-5 1/16"	2'-0"	11 11/16"	1 7/8"	9/16"	2'-4 3/4"	1 5/16"	15/16
P3	1	2'-2 15/16"	1'-9 13/16"	10"	1 7/8"	9/16"	2'-2 5/8"	1 5/16"	15/16
P4	1	2'-0 3/4"	1'-7 11/16"	8 3/8"	1 7/8"	9/16"	2'-0 1/2"	1 5/16"	15/16
P18	1	2'-6 15/16"	2'-1 15/16"	1'-1 1/4"	1 3/4"	7/16"	2'-6 11/16"	1 5/16"	3/4
P19	1	2'-4 7/8"	1'-11 7/8"	11 9/16"	1 3/4"	7/16"	2'-4 5/8"	1 5/16"	3/4
P20	1	2'-2 3/4"	1'-9 3/4"	9 7/8"	1 3/4"	7/16"	2'-2 1/2"	1 5/16"	3/4
P21	1	2'-0 5/8"	1'-7 11/16"	8 1/4"	1 3/4"	7/16"	2'-0 7/16"	1 5/16"	3/4

		OFFSET BLOCK ~ RAIL MTG. DIMENSIONS					
POST No.	OFFSET BLOCK	H	J	K	L	M	N
P1	OB1	1"	1'-0 5/16"	2'-1 3/16"	7/8"	1'-0 1/16"	2'-0 3/4"
P2	OB2	1"	10 11/16"	1'-11 1/16"	7/8"	10 3/8"	1'-10 5/8"
P3	OB3	1"	9"	1'-8 15/16"	7/8"	8 11/16"	1'-8 1/2"
P4	OB4	1"	7 3/8"	1'-6 13/16"	7/8"	7 1/16"	1'-6 3/8"
P18	OB18	1"	1'-0 1/8"	2'-1 1/8"	7/8"	11 15/16"	2'-0 11/16"
P19	OB19	1"	10 9/16"	1'-11"	7/8"	10 5/16"	1'-10 9/16"
P20	OB20	1"	8 15/16"	1'-8 7/8"	7/8"	8 5/8"	1'-8 7/16"
P21	OB21	1"	7 3/8"	1'-6 13/16"	7/8"	7"	1'-6 3/8"

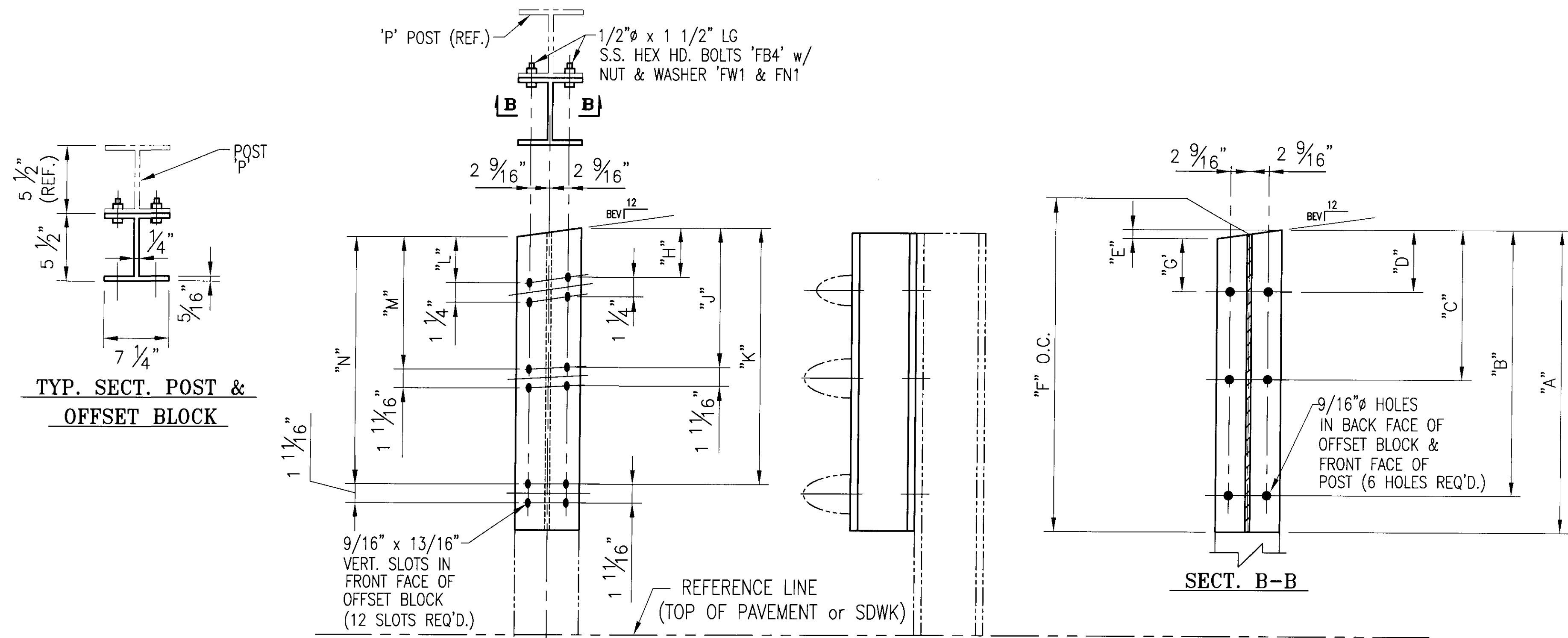
OFFSET BLOCK DETAIL CHART FOR NW APPROACH

		OFFSET BLOCK MTG. DIMENSIONS							BEV
POST No.	QTY.	A	B	C	D	E	F (O.C.)	X	
P5	1	1'-5 15/16"	1'-0 13/16"	2 1/8"	1/4"	1 7/8"	1'-5 13/16"	3/8	
P6	1	1'-5 5/16"	1'-0 3/16"	2 1/8"	1/4"	1 7/8"	1'-5 3/16"	3/8	
P7	1	1'-4 11/16"	11 5/8"	2 1/8"	1/4"	1 7/8"	1'-4 9/16"	3/8	
P8	1	1'-4 1/8"	11 1/16"	2 1/8"	1/4"	1 7/8"	1'-4"	3/8	
P9	1	1'-3 9/16"	10 1/2"	2 1/8"	1/4"	1 7/8"	1'-3 7/16"	3/8	
P10	1	1'-2 7/8"	9 15/16"	2 1/8"	1/4"	1 7/8"	1'-2 3/4"	3/8	

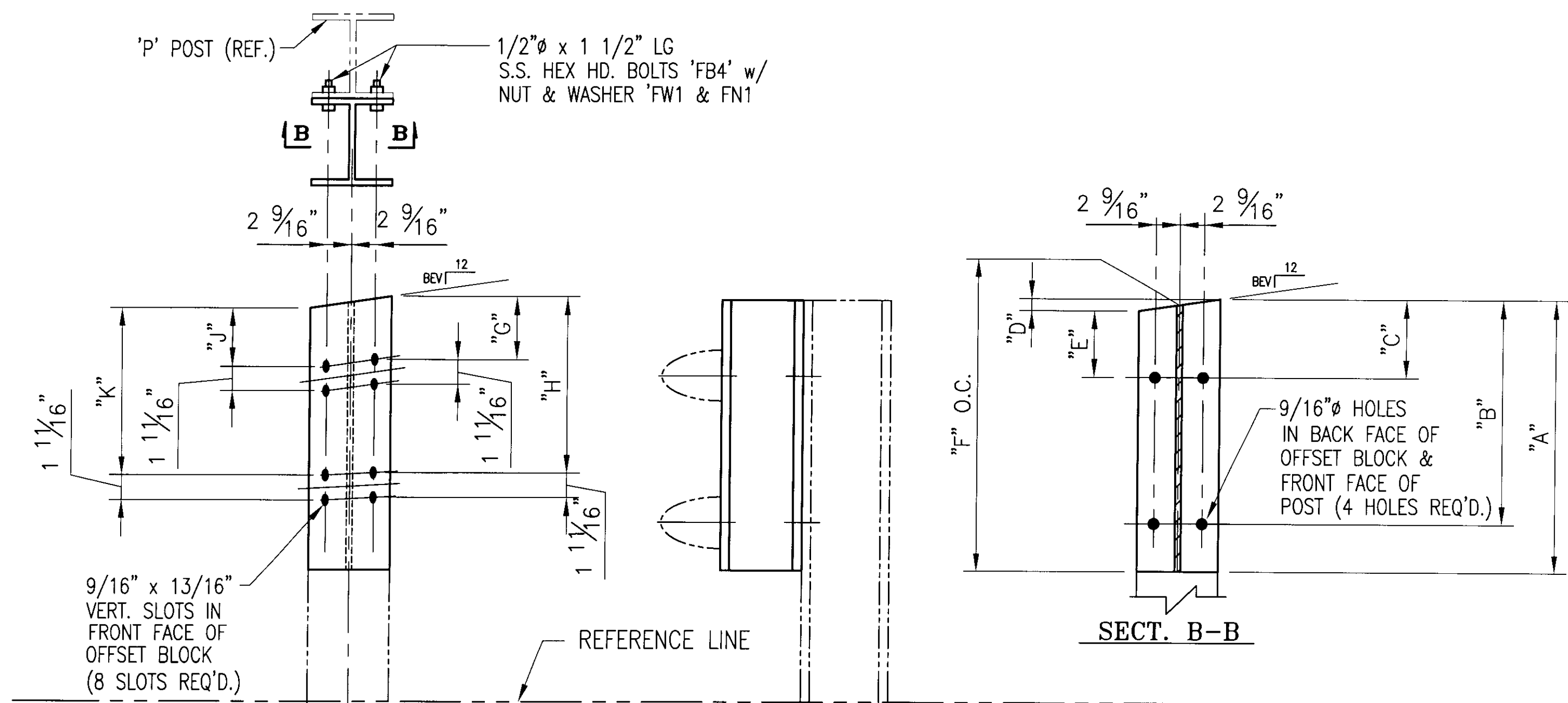
		OFFSET BLOCK ~ RAIL MTG. DIMENSIONS			
POST No.	OFFSET BLOCK	G	H	J	K
P5	OB5	1 3/16"	11 15/16"	1 1/8"	11 13/16"
P6	OB6	1 3/16"	11 5/16"	1 1/8"	11 3/16"
P7	OB7	1 3/16"	10 11/16"	1 1/8"	10 9/16"
P8	OB8	1 3/16"	10 1/8"	1 1/8"	10"
P9	OB9	1 3/16"	9 9/16"	1 1/8"	9 7/16"
P10	OB10	1 3/16"	9"	1 1/8"	8 7/8"

NOTE:
 2 CLAMPING BARS CB-01-H (#28596) PER POSTS P1- P4, P8 - P11
 4 CLAMPING BARS CB-03-A (#19447) PER POSTS P1- P4, P8 - P11
 w/ 1/2"Ø-13 UNC S.S. BOLT x 1" LG. 'FB1', 1 1/16" O.D. x 17/32" I.D. x 3/32" THK. ALUM WASHER 'FW1' (#15280 & #19404) (16 PER POST)

NOTE:
 4 CLAMPING BARS CB-03-A (#19447) PER POSTS P1 - P4, P8 - P11
 w/ 1/2"Ø-13 UNC S.S. BOLT x 1" LG. 'FB1', 1 1/16" O.D. x 17/32" I.D. x 3/32" THK. ALUM WASHER 'FW1' (#15280 & #19404) (8 PER POST)



FRT ELEV VIEW ~ OB1-OB4, OB18-OB21



FRT ELEV VIEW ~ OB5-OB10

BRIDGE No. 5
 PROJECT No. BHO 1448 (29)
 ITEM No. 900.640

APPROVED: _____ REC'D APPROVAL _____
 DRAWING _____

L.B. FOSTER COMPANY
 1016 GREENTREE ROAD
 PITTSBURGH, PENNSYLVANIA 15220

FOR: F. R. LAFAYETTE, INCORPORATED
 VERMONT AGENCY OF TRANSPORTATION
 TOWN OF JOHNSON, COUNTY OF LAMOILLE
 APPROACH RAILING FOR TH No 1 OVER THE GIHON RIVER
 OFFSET BOX DETAILS

MADE CMS DATE 10/24/09 JOB No. AR0573 CUST. No. _____
 CHECK BLJ DATE 10/06/09 DRAWING LB6 REV. No. _____

REV.	DESCRIPTION	BY	DATE

ANODIZED
 (SEE NOTES ON LB1)