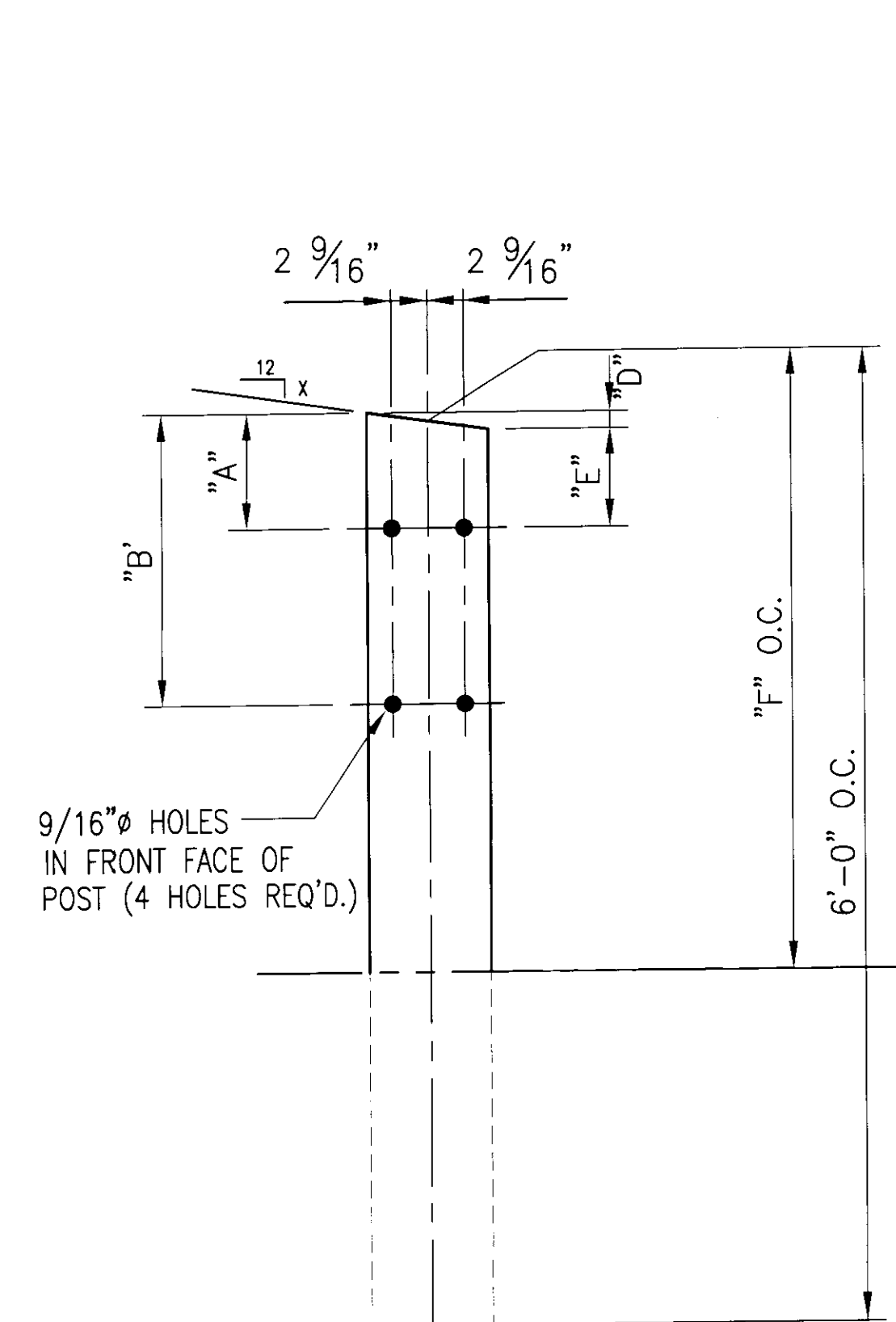
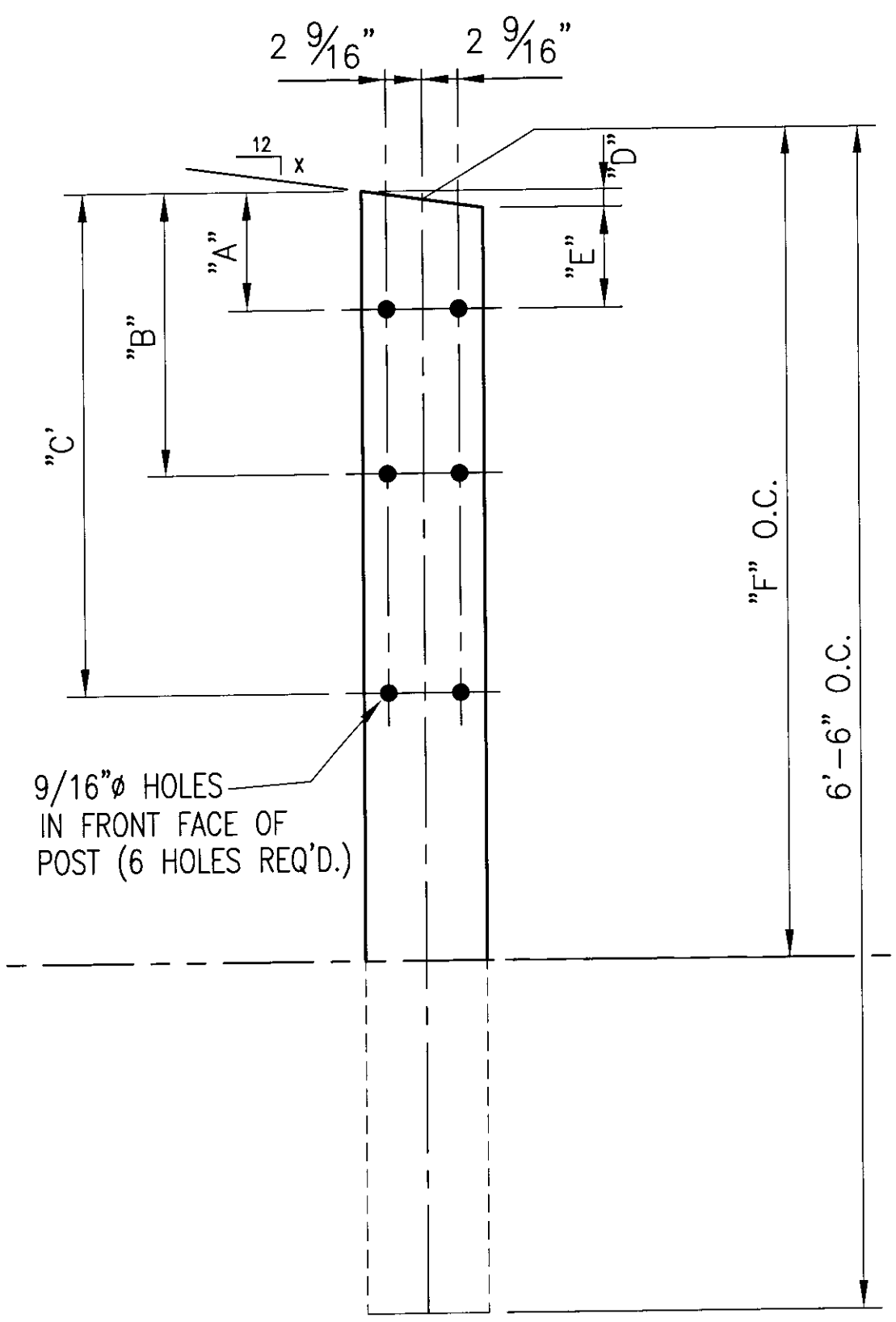


POST DETAIL CHART ~ NE APPROACH								
OFFSET BLOCK MTG. DIMENSIONS								BEV
POST No.	QTY.	A	B	C	D	E	F (O.C.)	X
P11	1	1 7/8"	1'-1 3/8"	2'-2 1/16"	5/8"	1 1/4"	3'-4 11/16"	1
P12	1	1 7/8"	11 11/16"	1'-11 3/4"	5/8"	1 1/4"	3'-1 7/8"	1
P13	1	1 7/8"	10"	1'-9 7/16"	5/8"	1 1/4"	2'-11"	1
P14	1	1 7/8"	8 5/16"	1'-7 1/8"	5/8"	1 1/4"	2'-8 1/8"	1
P15	1	2 3/16"	1'-0 1/4"		5/16"	1 7/8"	2'-2 5/8"	1/2
P16	1	2 3/16"	11 1/2"		5/16"	1 7/8"	2'-3 1/8"	1/2
P17	1	2 3/16"	10 3/4"		5/16"	1 7/8"	2'-3 5/8"	1/2

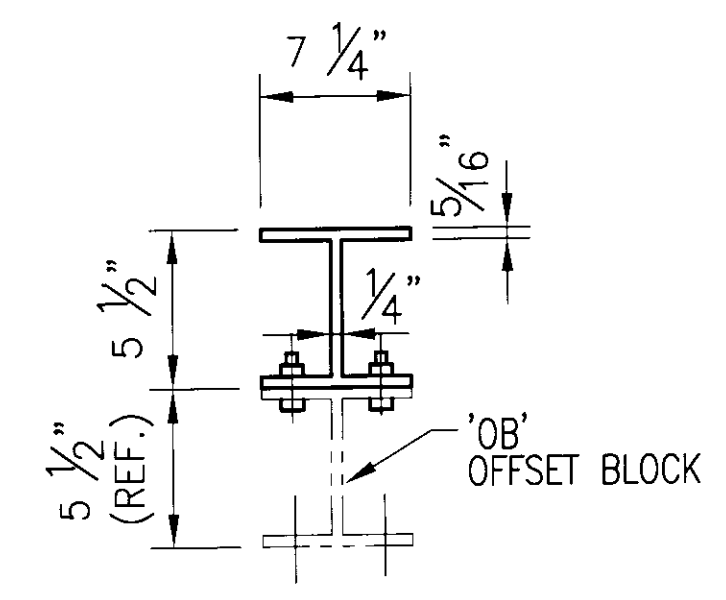
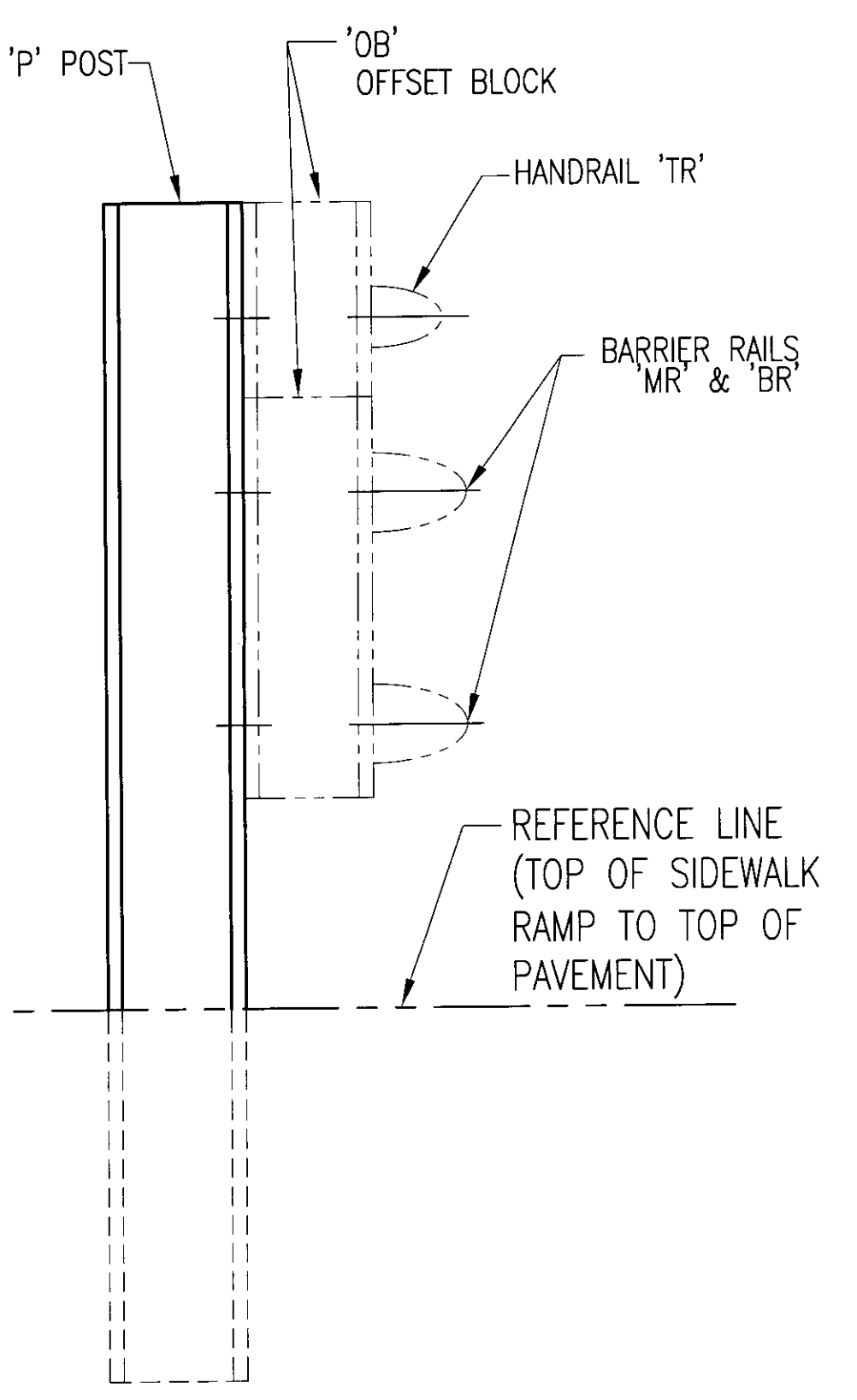
POST DETAIL CHART ~ SW APPROACH								
OFFSET BLOCK MTG. DIMENSIONS								BEV
POST No.	QTY.	A	B	C	D	E	F (O.C.)	X
P22	1	2 3/16"	1'-1 5/8"	2'-2 3/8"	1 3/16"	1"	3'-2 3/4"	2
P23	1	2 3/16"	11 15/16"	2'-0 5/16"	1 3/16"	1"	3'-1 1/2"	2
P24	1	2 3/16"	10 1/4"	1'-10 3/16"	1 3/16"	1"	3'-0 3/16"	2
P25	1	2 3/16"	8 5/8"	1'-8 1/8"	1 3/16"	1"	2'-10 15/16"	2



FRT ELEV VIEW
P15 - P17



FRT ELEV VIEW
P11 - P14
P22 - P25



TYP. SECT. POST &
OFFSET BLOCK

NOTE:
2 CLAMPING BARS CB-01-H (#28596) PER POSTS P8-P11
4 CLAMPING BARS CB-03-A (#19447) PER POSTS P12-P14
w/ 1/2" φ-13 UNC
S.S. BOLT x 1" LG. 'FB1',
1 1/16" O.D. x 17/32"
I.D. x 3/32" THK. ALUM
WASHER 'FW1'
(#15280 & # 19404)
(16 PER POST)

NOTE:
4 CLAMPING BARS CB-03-A (#19447) PER POSTS P12-P14
w/ 1/2" φ-13 UNC
S.S. BOLT x 1" LG. 'FB1',
1 1/16" O.D. x 17/32"
I.D. x 3/32" THK. ALUM
WASHER 'FW1'
(#15280 & # 19404)
(8 PER POST)

➔ **ANODIZED**
(SEE NOTES ON LB1)

REV.	DESCRIPTION	BY	DATE

BRIDGE No. 5
PROJECT No. BHO 1448 (29) ITEM No: 900.640

APPROVED: _____ REC'D APPROVAL _____
DRAWING _____

L.B. FOSTER COMPANY
1016 GREENTREE ROAD
PITTSBURGH, PENNSYLVANIA 15220

FOR: F. R. LAFAYETTE, INCORPORATED
VERMONT AGENCY OF TRANSPORTATION
TOWN OF JOHNSON, COUNTY OF LAMOILLE
APPROACH RAILING FOR TH No 1 OVER THE GIHON RIVER
3L ALUMINUM APPROACH RAIL POST DETAILS

MADE CMS. DATE 10/24/09 JOB No. AR0573 CUST. No. _____
CHECK BLJ. DATE 11/06/09 DRAWING LB5 REV. No. _____