

POST DETAIL CHART FOR NW APPROACH

		OFFSET BLOCK MTG. DIMENSIONS						BEV
POST No.	QTY.	A	B	C	D	E	F (O.C.)	X
P1	1	1 7/8"	1'-1 3/8"	2'-2 1/8"	9/16"	1 5/16"	3'-4 13/16"	15/16
P2	1	1 7/8"	11 11/16"	2'-0"	9/16"	1 5/16"	3'-2 3/8"	15/16
P3	1	1 7/8"	10"	1'-9 13/16"	9/16"	1 5/16"	3'-0"	15/16
P4	1	1 7/8"	8 3/8"	1'-7 11/16"	9/16"	1 5/16"	2'-9 9/16"	15/16
P5	1	2 1/8"	1'-0 13/16"		1/4"	1 7/8"	2'-3"	3/8
P6	1	2 1/8"	1'-0 3/16"		1/4"	1 7/8"	2'-2 9/16"	3/8
P7	1	2 1/8"	11 5/8"		1/4"	1 7/8"	2'-2 1/8"	3/8
P8	1	2 1/8"	11 1/16"		1/4"	1 7/8"	2'-2 5/16"	3/8
P9	1	2 1/8"	10 1/2"		1/4"	1 7/8"	2'-2 9/16"	3/8
P10	1	2 1/8"	9 15/16"		1/4"	1 7/8"	2'-2 3/4"	3/8

POST DETAIL CHART FOR SE APPROACH

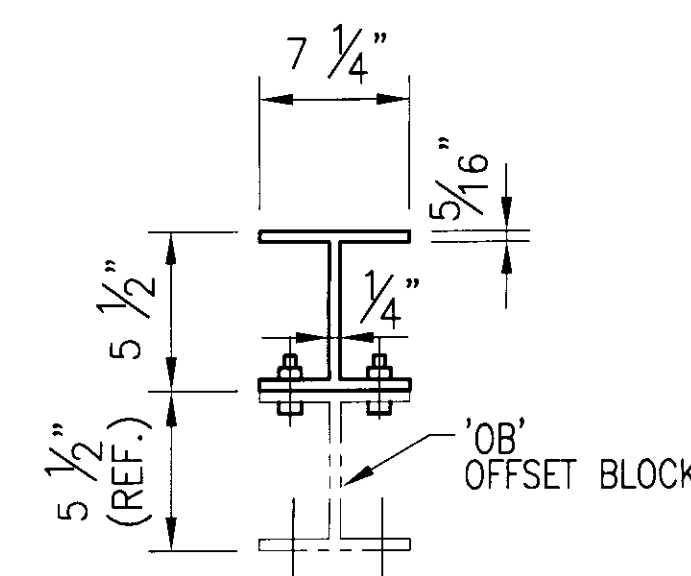
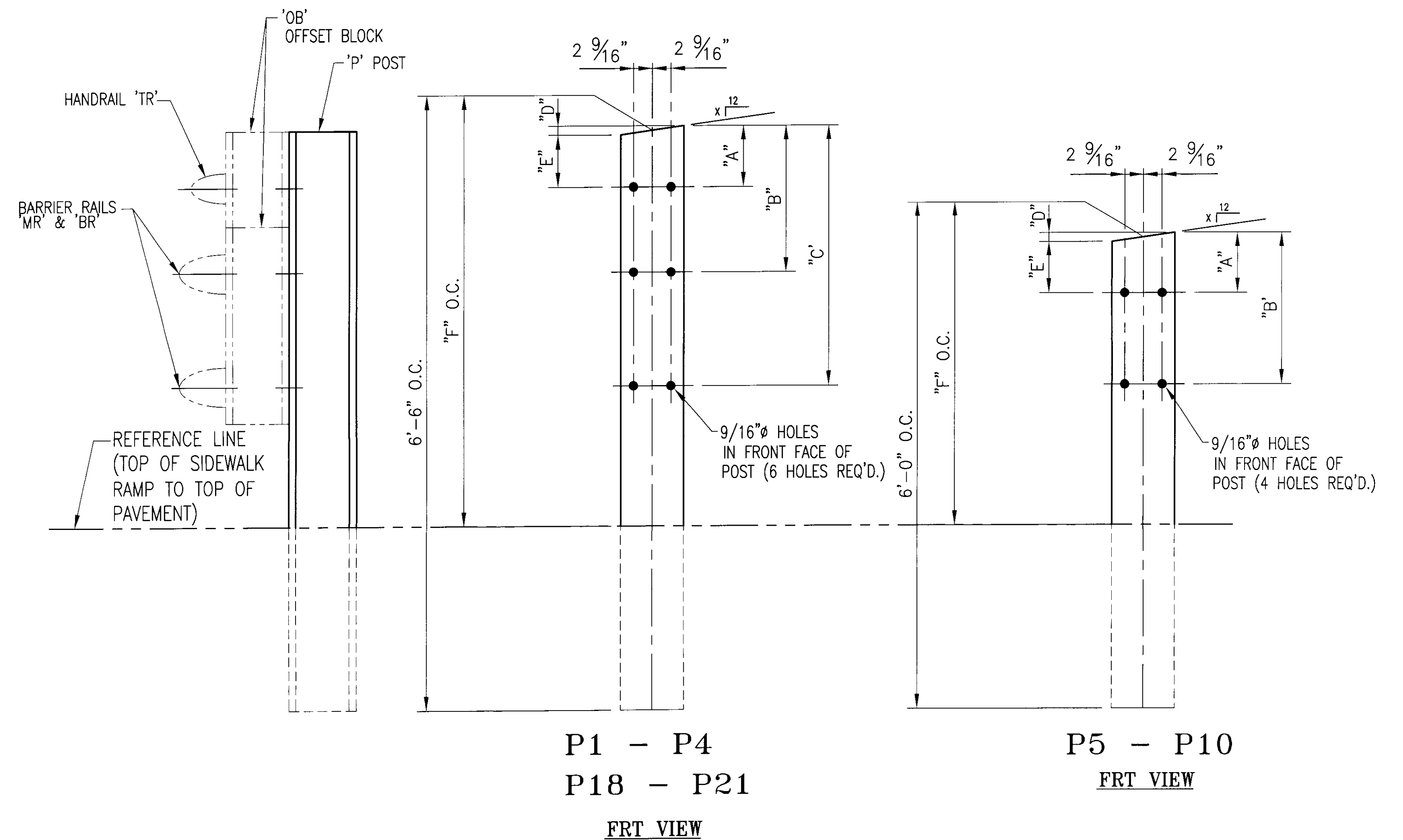
		OFFSET BLOCK MTG. DIMENSIONS						BEV
POST No.	QTY.	A	B	C	D	E	F (O.C.)	X
P18	1	1 3/4"	1'-1 1/4"	2'-1 15/16"	7/16"	1 5/16"	3'-5 1/2"	3/4
P19	1	1 3/4"	11 9/16"	1'-11 7/8"	7/16"	1 5/16"	3'-3 1/4"	3/4
P20	1	1 3/4"	9 7/8"	1'-9 3/4"	7/16"	1 5/16"	3'-0 15/16"	3/4
P21	1	1 3/4"	8 1/4"	1'-7 11/16"	7/16"	1 5/16"	2'-10 3/4"	3/4

NOTE:

2 CLAMPING BARS CB-01-H (#28596) PER POSTS P8-P11  
 4 CLAMPING BARS CB-03-A (#19447) PER POSTS P12-P14 w/ 1/2"Ø-13 UNC S.S. BOLT x 1" LG. 'FB1', 1 1/16" O.D. x 17/32" I.D. x 3/32" THK. ALUM WASHER 'FW1' (#15280 & # 19404) (16 PER POST)

NOTE:

4 CLAMPING BARS CB-03-A (#19447) PER POSTS P12-P14 w/ 1/2"Ø-13 UNC S.S. BOLT x 1" LG. 'FB1', 1 1/16" O.D. x 17/32" I.D. x 3/32" THK. ALUM WASHER 'FW1' (#15280 & # 19404) (8 PER POST)



TYP. SECT. POST & OFFSET BLOCK

**ANODIZED**  
 (SEE NOTES ON LB1)

REV.	DESCRIPTION	BY	DATE

BRIDGE No. 5  
 PROJECT No. BHO 1448 (29) ITEM No. 900.640

APPROVED: \_\_\_\_\_ REC'D APPROVAL \_\_\_\_\_  
 DRAWING \_\_\_\_\_

**L.B. FOSTER COMPANY**  
 1016 GREENTREE ROAD  
 PITTSBURGH, PENNSYLVANIA 15220

FOR: F. R. LAFAYETTE, INCORPORATED  
 VERMONT AGENCY OF TRANSPORTATION  
 TOWN OF JOHNSON, COUNTY OF LAMOILLE  
 APPROACH RAILING FOR TH No 1 OVER THE GIRON RIVER  
 3L ALUMINUM APPROACH RAIL POST DETAILS

MADE CMS DATE 10/24/09 JOB No. AR0573 CUST. No.  
 CHECK\_BJL DATE 11/06/09 DRAWING LB4 REV. No.