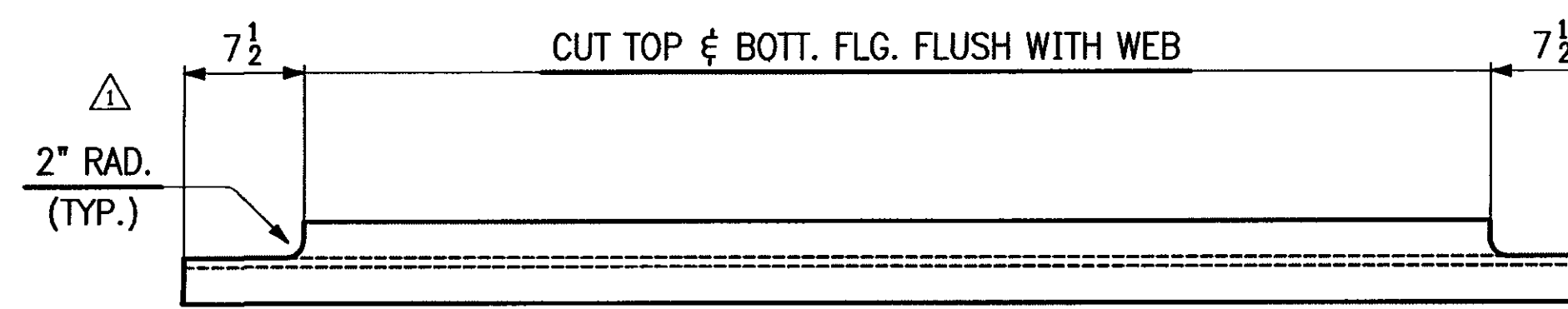
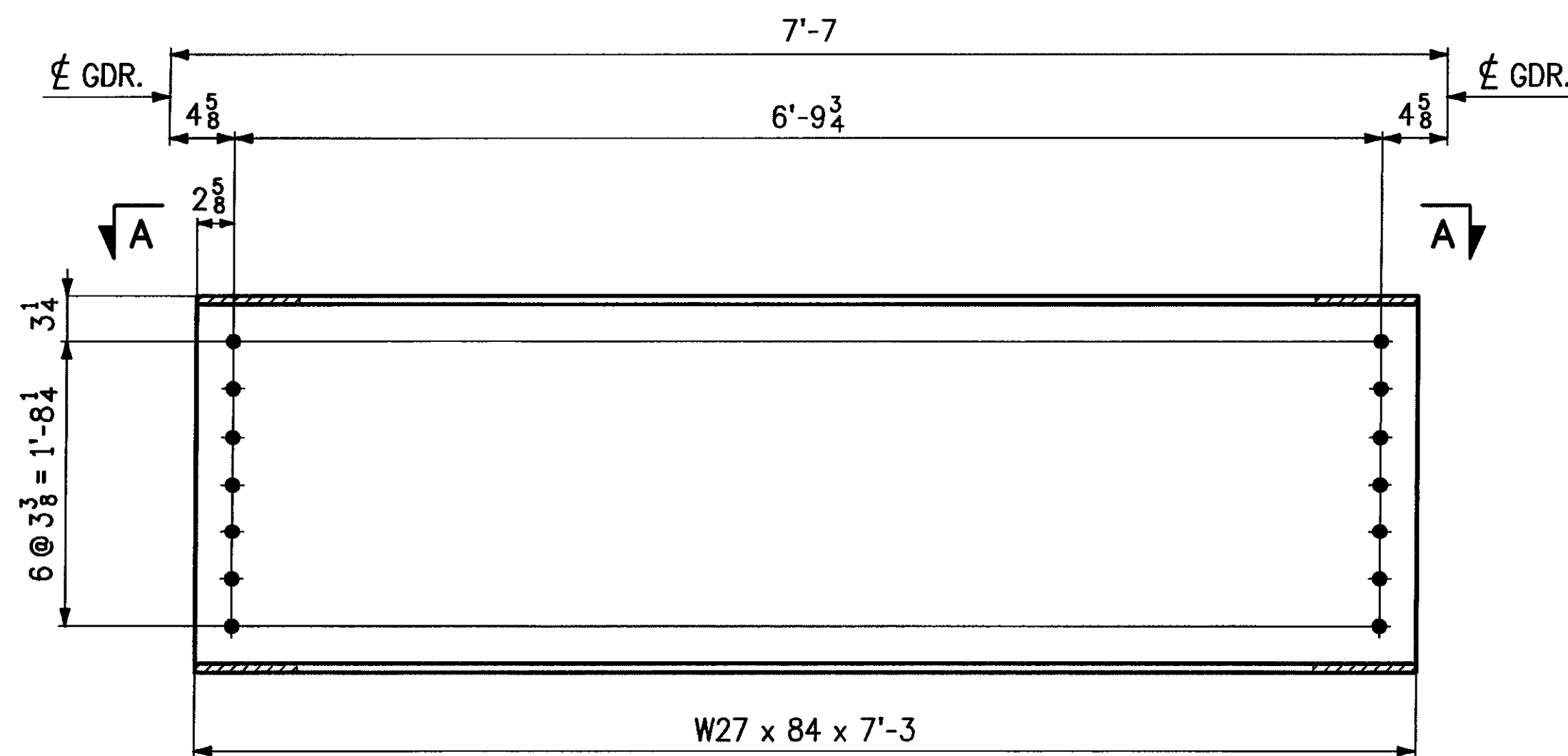


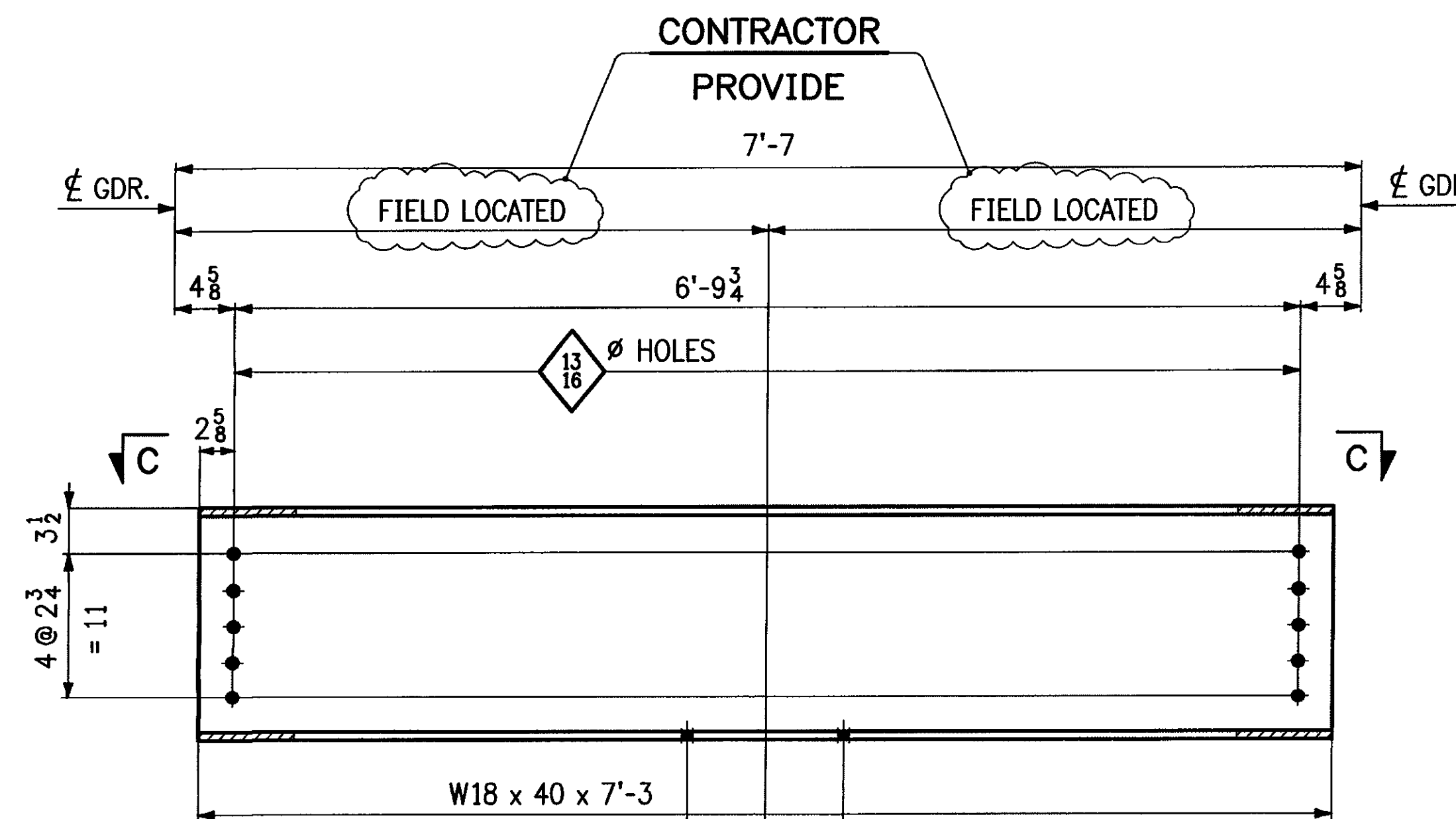
VIEW A-A



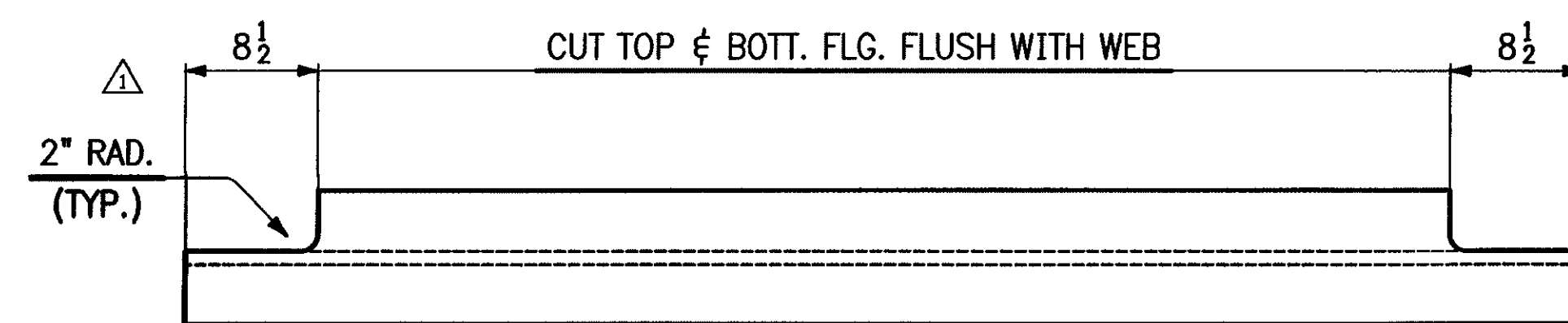
VIEW C-C



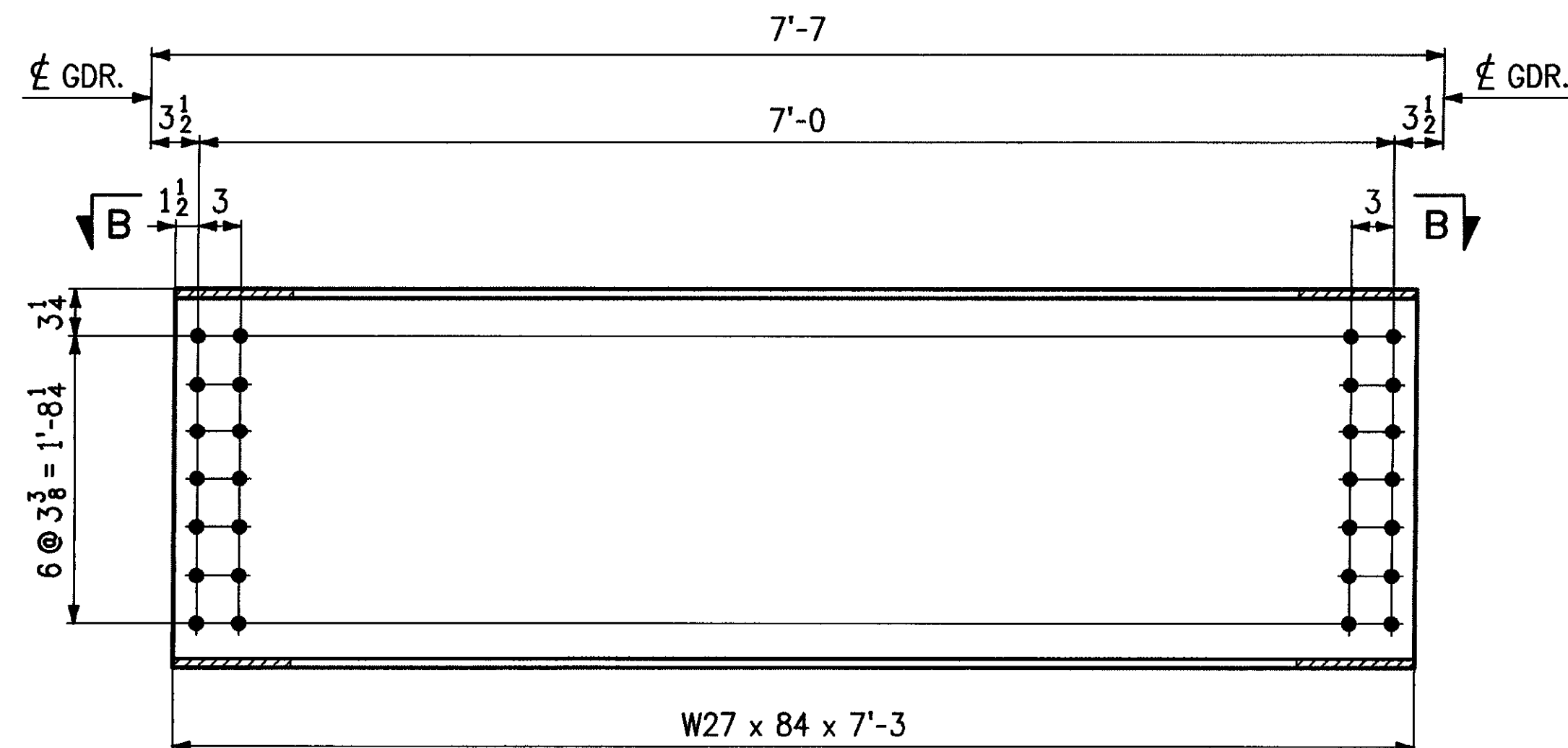
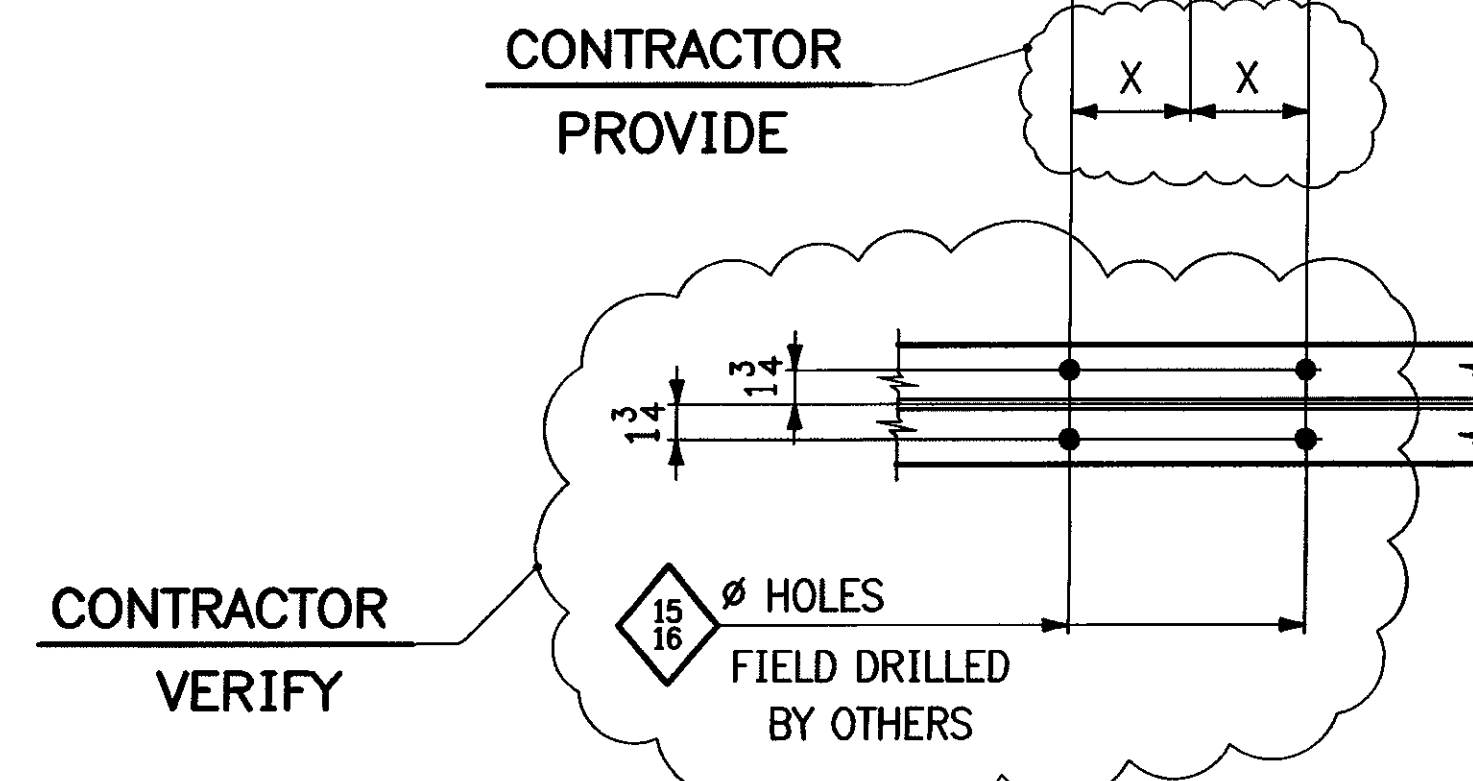
36 ~ INTERMEDIATE DIAPHRAGM ~ D1



4 ~ UTILITY SUPPORT ~ D3



VIEW B-B



4 ~ PIER DIAPHRAGM ~ D2

BILL OF MATERIAL

SHIP MARK	QTY	PIECE MARK	DESCRIPTION	LENGTH		REMARKS	PAGE LINE
				FT	IN		
			DIAPHRAGMS				
D1	36		W27 x 84	7	3		3/10
D2	4		W27 x 84	7	3		3/10
			UTILITY SUPPORTS				
D3	4		W18 x 40	7	3		3/11

RECEIVED

OK'D BY _____ OK'D BY kmh
 JUL 20 2009
 REC'D BY _____ APPROVED _____
 BY kmh DATE 7/21/09

REVISIONS			PRINT RECORD		
NO	DATE	DESCRIPTION	DATE	QTY	ISSUED
			7-16	5p	Appr.
7-14-09 REVISED DIMENSION & ADDED RADIUS.					

MEGQUIER & JONES INC.

STRUCTURAL STEEL SINCE 1895

1156 BROADWAY
 SOUTH PORTLAND, MAINE 04106

PAINT	HOLES U N 1 5/16"	WELD U N	Q C REVIEW
PROJECT	TH NO.1 OVER THE GIHON RIVER PROJECT NO. BHO 1448 (29) BRIDGE NO. 5 TOWN OF JOHNSON, VERMONT		DATE 6-8-09
DESCRIPTION	DIAPHRAGMS		DRAWN BY CPM
ARCH	N/A	ENGR VERMONT AGENCY OF TRANSPORTATION	CHK'D BY WCG
CUSTOMER	S.D. IRELAND CONCRETE CONSTRUCTION CORP.		JOB NO J-81
			SHT NO 22