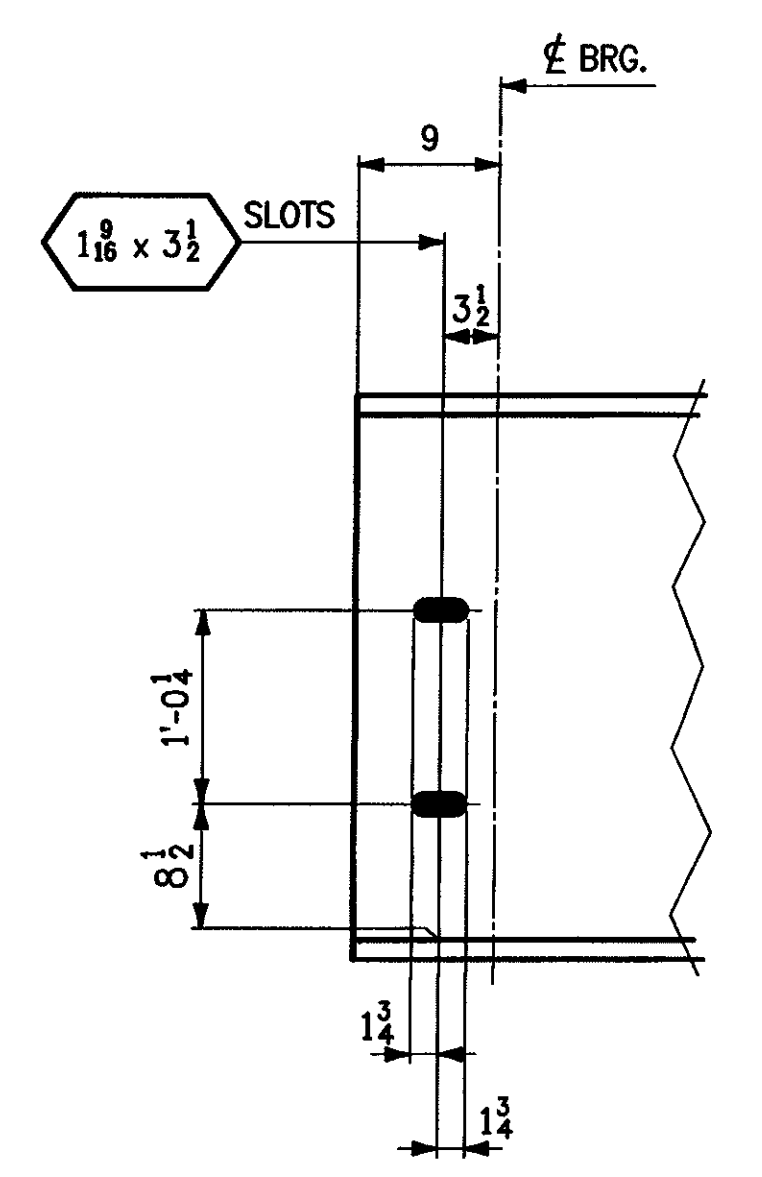


TOP & BOT. FLG. CLIP @ ABUT. 2

**NOTES:**

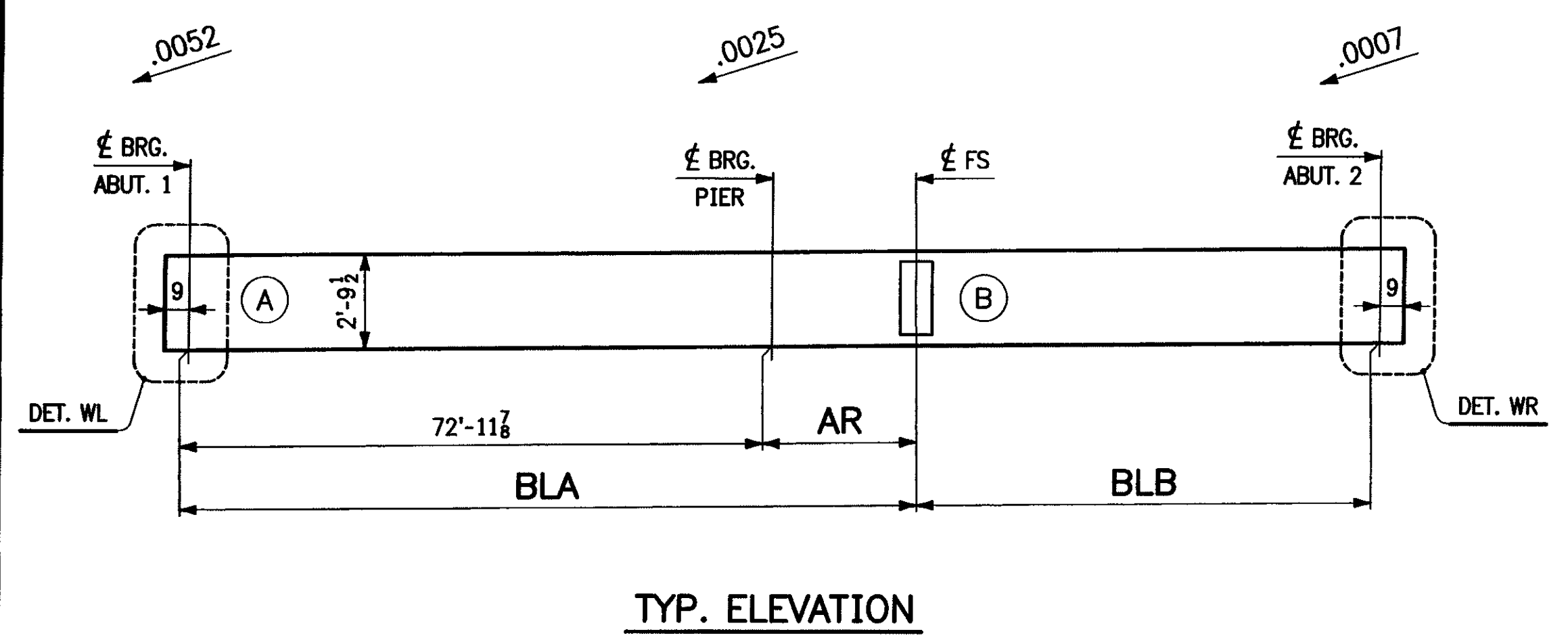
1. LONGITUDINAL DIMS. ARE SLOPING ALONG BOTTOM OF GIRDER IN CAMBERED POSITION.
2. TRANSVERSE DIMS. ARE HORIZONTAL.
3. ———> DENOTES DROP (FINAL). ARROW POINTS TO LOW END.
4. ENDS OF GIRDERS & BRG. STIFFENERS ARE VERTICAL IN FINAL POSITION.
5. INT. CONN. PLATES ARE NORMAL TO BOTTOM FLANGE.
6. FOR LAYOUTS SEE DWG. TD1.

**SPAN 2**



DET. WL (SHOWN)  
DET. RL (OPP. HAND)

LINE	BLA	AR	BLB
1	91'-1 <sup>1</sup> / <sub>16</sub>	18'-1 <sup>9</sup> / <sub>16</sub>	57'-11 <sup>7</sup> / <sub>16</sub>
2	91'-0 <sup>3</sup> / <sub>4</sub>	18'-0 <sup>7</sup> / <sub>16</sub>	57'-11 <sup>9</sup> / <sub>16</sub>
3	91'-3 <sup>3</sup> / <sub>8</sub>	18'-4	57'-7 <sup>15</sup> / <sub>16</sub>
4	91'-7 <sup>7</sup> / <sub>8</sub>	18'-8	57'-3 <sup>7</sup> / <sub>16</sub>
5	91'-11 <sup>11</sup> / <sub>16</sub>	18'-11 <sup>11</sup> / <sub>16</sub>	56'-11 <sup>3</sup> / <sub>16</sub>



TYP. ELEVATION

RECEIVED  
OK'D BY JEL OK'D BY kmh  
JUL 23 2009  
R. CUTLIT APPROVED ✓  
BY kmh DATE 7/21/09

REVISIONS		PRINT RECORD			
NO	DATE	DESCRIPTION	DATE	QTY	ISSUED
			7-16	5P	Appr.
Δ	7-14-09	ADDED BRG. STIFFENERS & DIAPHRAGMS.			

**MEGQUIER & JONES INC.**  
STRUCTURAL STEEL SINCE 1895  
1156 BROADWAY  
SOUTH PORTLAND, MAINE 04106

PAIN	HOLES U N	WELD U N	Q C REVIEW
PROJECT TH NO.1 OVER THE GIRON RIVER PROJECT NO. BHO 1448 (29) BRIDGE NO. 5 TOWN OF JOHNSON, VERMONT			DATE 7-14-09 DRAWN BY WCG
DESCRIPTION CALC. PLAN			CHK'D BY CT
ARCH N/A	ENGR VERMONT AGENCY OF TRANSPORTATION	JOB NO J-81	SHT NO WS1
CUSTOMER S.D. IRELAND CONCRETE CONSTRUCTION CORP.			

THIS IS A WORK DRAWING. ITS FUNCTION IS TO PROVIDE BASIC DIMENSIONS AND CONCEPTS FOR USE IN THE PREPARATION OF THE SHOP DETAILS. IT IS NOT INTENDED TO BE USED FOR ERECTION OR FABRICATION.