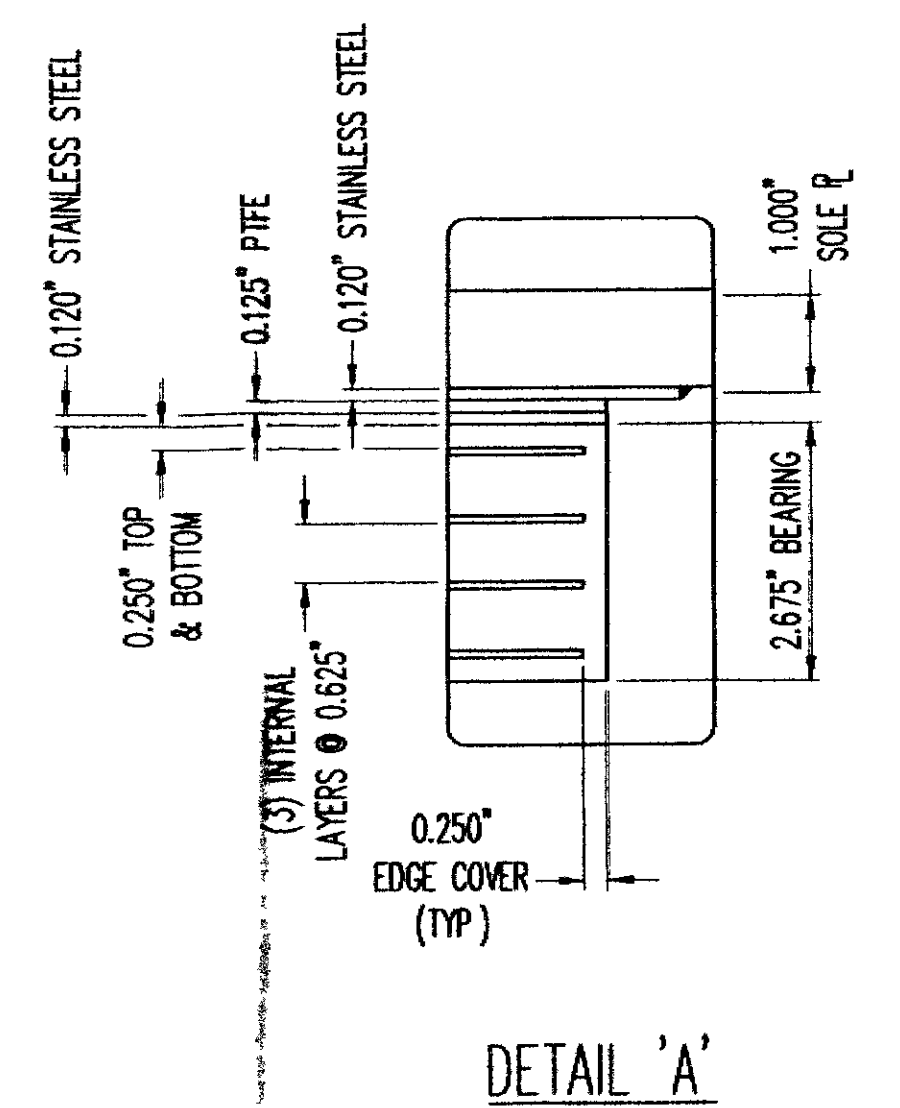
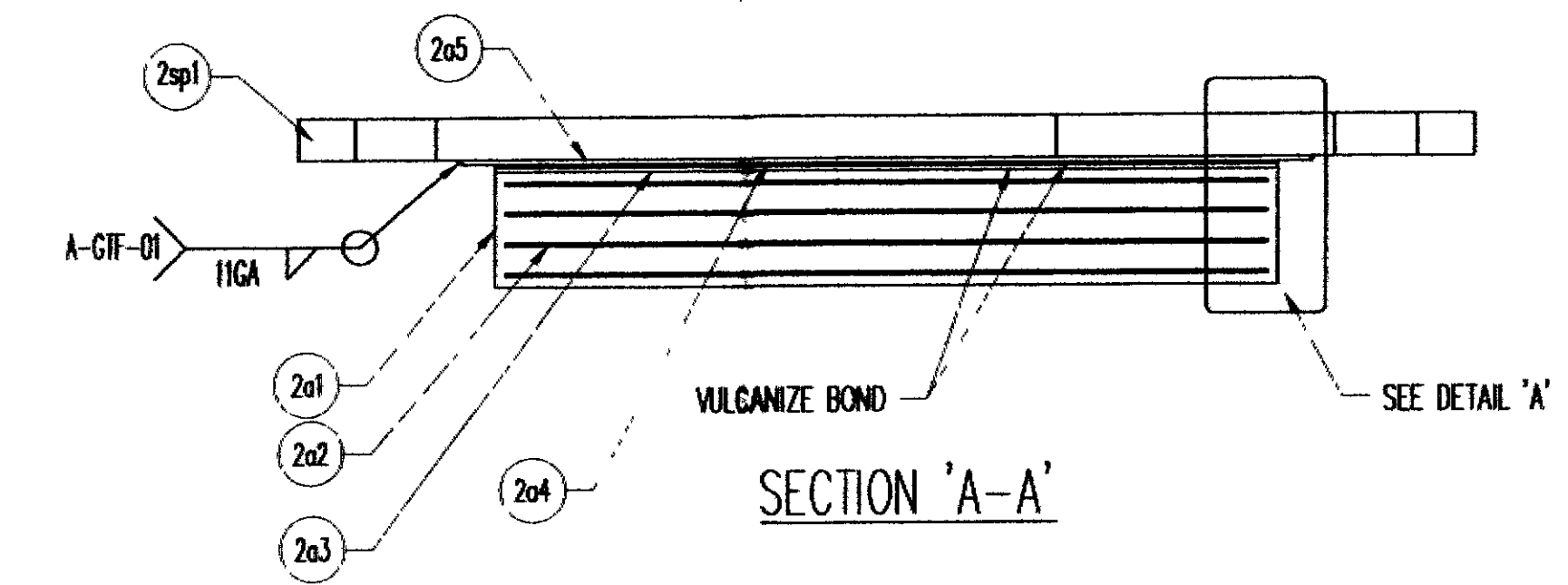


PLAN VIEW  
EXPANSION BEARING  
(5) REQ'D @ ABUTMENT NO 2



PLEASE VERIFY DS BROWN TO FABRICATE AS DETAILED IF NOT MARKED OTHERWISE. O.K. AS SHOWN

(2) 1.875\"/>

MK	QTY	DESCRIPTION	MATERIAL	LENGTH	REMARKS	REV
2A	5	ELASTOMERIC BEARING				--
2a1	5	2.675\"/>				
2a2	20	14 GA. X 17.500\"/>				
2a3	5	11 GA. X 18.000\"/>				
2a4	5	0.125\"/>				
2a5	5	11 GA. X 19.000\"/>				
2sp1	5	1.000\"/>				

NOTE: THE DS BROWN COMPANY HAS CLIPPED THE BEARING USING THE GREATEST ANGLE INSTALLATION AND FABRICATION WILL BE SIMPLIFIED IF ALL BEARINGS ARE THE SAME PLEASE VERIFY. THE DS BROWN COMPANY WILL FABRICATE AS DETAILED UNLESS MARKED OTHERWISE.  
O.K. AS SHOWN

LOAD DATA	
MAXIMUM BEARING STRESS (psi)	979.0

VTrans - PDD  
MAY 22 2009  
Structures Design Section

SEE SHEET G01 FOR GENERAL NOTES  
SEE SHEET 4 FOR ANCHOR ROD ASSEMBLY

Accepted as Noted	
Accepted Noted Resubmit	
Rejected, Revise Resubmit	
Rejected - Unacceptable	

Checking is only for conformance with the design concept of the Project and compliance with the information given in the Contract Documents. The Engineer assumes no liability for errors or omissions that may be contained herein. The Contractor by approving and submitting these documents, verifies their accuracy as stipulated on the Contractor's Shop Drawing Stamp.

DuBOIS AND KING  
By: *[Signature]*  
Date: 6/8/09  
KMH 6/12/09

THE D.S. BROWN COMPANY  
300 E. CHERRY STREET  
NORTH BALTIMORE, OHIO 45872  
419.257.3561  
FAX: 419.257.0332  
WWW.DSBROWN.COM

REV	DESCRIPTION	DATE	DET	CHD
	LOCATION - TH NO. 1 OVER THE GIRON RIVER			
	BRIDGE - 5			
	PROJECT - BHO 1448 (29)			
	P O NO - 6045			
	DESIGNER - DuBOIS & KING, INC			
	CUSTOMER - SD IRELAND CONSTRUCTION			

DESCRIPTION	SCALE	DRAWN BY	CHECKED BY	DATE
VERSIFLEX ELASTOMERIC BEARING LAMOILLE CO., VT	N.T.S.	SP	EK	5/09

PROJECT NUMBER	RELEASE	SHEET
26274	1104	1