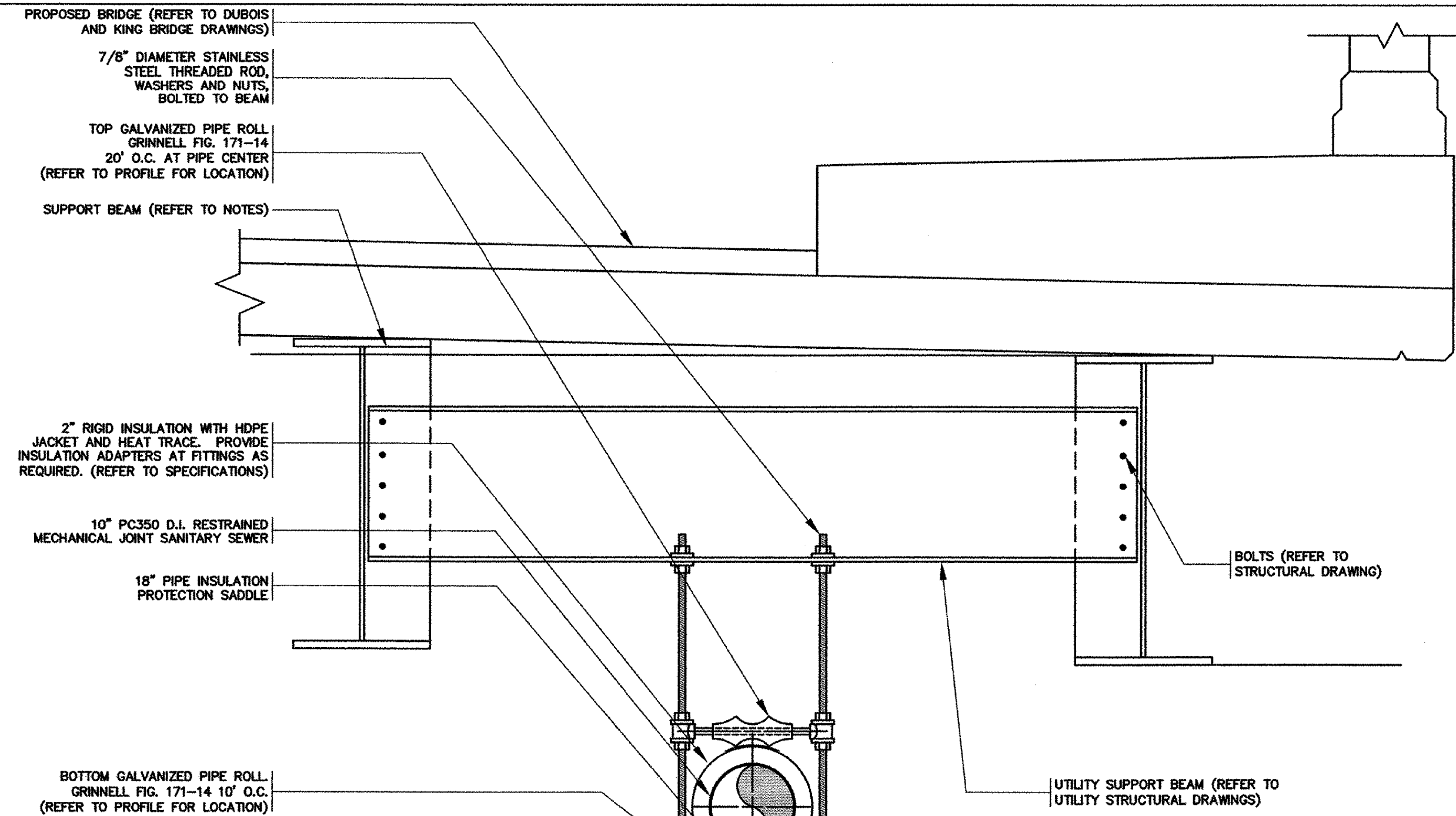


WATER MAIN NOTES:

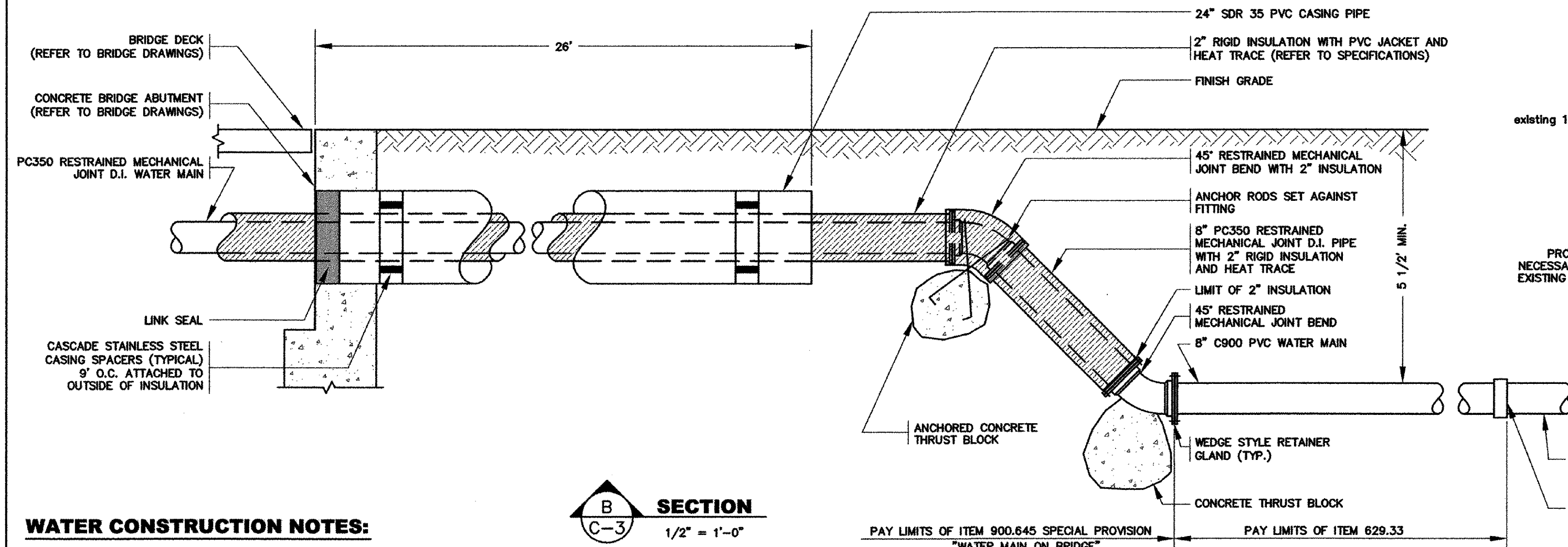
1. CONTRACTOR SHALL SET WATER MAIN SO AS TO AVOID CONFLICT BETWEEN PIPE SUPPORTS AND JOINT ASSEMBLIES.
2. REFER TO UTILITY STRUCTURAL FRAMING PLAN AND BRIDGE FRAMING PLAN FOR SUPPORT BEAM PLACEMENT.

SECTION A
1" = 1'-0"



SANITARY SEWER NOTES:

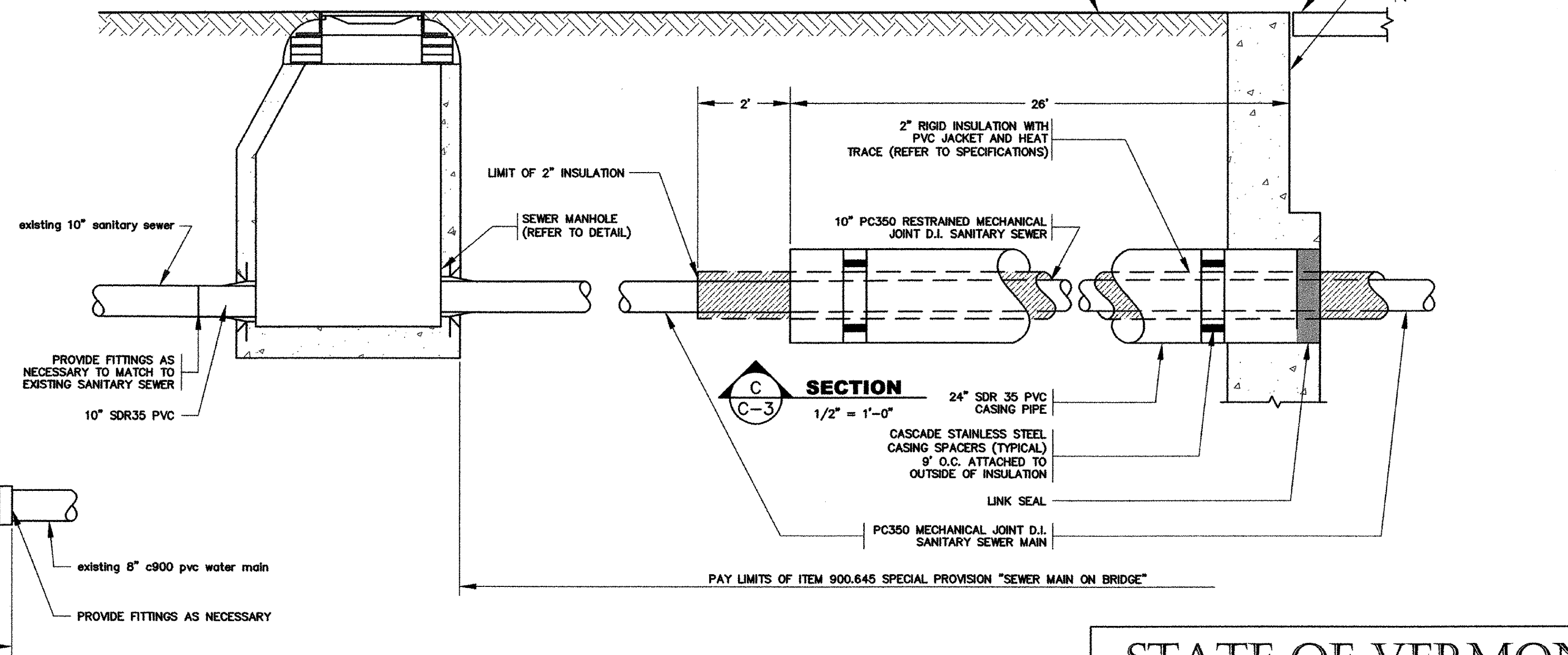
1. CONTRACTOR SHALL SET SANITARY SEWER SO AS TO AVOID CONFLICT BETWEEN PIPE SUPPORTS AND JOINT ASSEMBLIES.
2. REFER TO UTILITY STRUCTURAL FRAMING PLAN AND BRIDGE FRAMING PLAN FOR SUPPORT BEAM PLACEMENT.



SECTION B
1/2" = 1'-0"

WATER CONSTRUCTION NOTES:

1. THIS SECTION TYPICAL AT BOTH ENDS OF BRIDGE.
2. END OF PIPE CASING SHALL BE SEALED WITH CASCADE MODEL CCES END SEALS WITH STAINLESS STEEL BAND CLAMPS (OR EQUAL).
3. INSULATION JACKETING MATERIAL TO BE HDPE.
4. REFER TO SPECIFICATIONS FOR HEAT TRACE CABLE AND APPURTENANCES.
5. CONTRACTOR SHALL CONTACT DIG-SAFE AND THE JOHNSON WATER AND LIGHT DEPARTMENT TO LOCATE UTILITIES AND TO COORDINATE ALL INTERCONNECTIONS OF WATER MAINS PRIOR TO THE START OF CONSTRUCTION.
6. INSTALL A 2" SCH40 PVC CONDUIT FROM THE HEAT TRACE JUNCTION BOX ON THE WATER MAIN TO THE HEAT TRACE CONTROL PANEL AS SHOWN. INSTALL THE HEAT TRACE CABLE IN THE 2" SCH40 PVC CONDUIT AND ALONG THE WATER MAIN PER THE MANUFACTURER. NO SPLICING SHALL BE ALLOWED ON THE CABLE FROM THE JUNCTION BOX TO THE CONTROL PANEL AND FROM THE JUNCTION BOX TO THE WATER MAIN. CONTRACTOR SHALL COORDINATE REQUIRED LENGTHS OF CABLE WITH THE MANUFACTURER. ALL ELECTRICAL CONNECTIONS AND OTHER WIRING TO PROVIDE A FUNCTIONAL HEAT TRACE SYSTEM SHALL BE PROVIDED BY THE CONTRACTOR. ALL MATERIAL AND LABOR COSTS TO COMPLETE THIS WORK SHALL BE INCLUDED UNDER PAY ITEM 900.645 SPECIAL PROVISION "ELECTRICAL HEAT TRACE SYSTEM".
7. PROVIDE RESTRAINED JOINTS AND CONCRETE THRUST BLOCKS AT ALL BENDS IN THE WATER MAIN. REFER TO DETAIL FOR THRUST BLOCK REQUIREMENTS. THRUST BLOCKS SHALL BE CONSIDERED INCIDENTAL TO PAY ITEM 900.645 SPECIAL PROVISION "WATER MAIN ON BRIDGE".
8. PROVIDE A 3/4" CORPORATION STOP AT THE TOP OF PIPE AT WESTERN BRIDGE ABUTMENT. PIPE TO BE THE EDGE OF THE BRIDGE DECK AND TERMINATE WITH A LOCKABLE BALL VALVE, FOR USE BY THE VILLAGE OF JOHNSON TO BLEED AIR OUT OF THE WATER MAIN. ALL MATERIAL AND LABOR COSTS TO COMPLETE THIS WORK SHALL BE INCLUDED UNDER PAY ITEM 900.645 SPECIAL PROVISION "WATER MAIN ON BRIDGE".
9. ALL WORK ASSOCIATED WITH THE WATER MAIN NOT SPECIFICALLY INCLUDED IN OTHER PAY ITEMS SHALL BE CONSIDERED MAINTENANCE OF EXISTING WATER SYSTEM AND PAID UNDER CONTRACT ITEM 629.42 TRANSFER TO NEW SYSTEM, WATER SYSTEM.



SECTION C
1/2" = 1'-0"

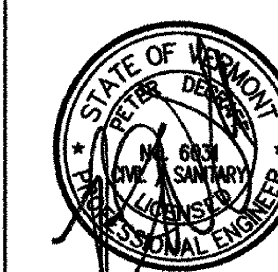
SEWER CONSTRUCTION NOTES:

1. THIS SECTION TYPICAL AT BOTH ENDS OF BRIDGE.
2. END OF PIPE CASING SHALL BE SEALED WITH CASCADE MODEL CCES END SEALS WITH STAINLESS STEEL BAND CLAMPS (OR EQUAL).
3. INSULATION JACKETING MATERIAL TO BE HDPE.
4. REFER TO SPECIFICATIONS FOR HEAT TRACE CABLE AND APPURTENANCES.
5. INSTALL A 2" SCH40 PVC CONDUIT FROM THE HEAT TRACE JUNCTION BOX ON THE SANITARY SEWER TO THE HEAT TRACE CONTROL PANEL AS SHOWN. INSTALL THE HEAT TRACE CABLE IN THE 2" SCH40 PVC CONDUIT AND ALONG THE SANITARY SEWER PER THE MANUFACTURER. NO SPLICING SHALL BE ALLOWED ON THE CABLE FROM THE JUNCTION BOX TO THE CONTROL PANEL AND FROM THE JUNCTION BOX TO THE SANITARY SEWER. CONTRACTOR SHALL COORDINATE REQUIRED LENGTHS OF CABLE WITH THE MANUFACTURER. ALL ELECTRICAL CONNECTIONS AND OTHER WIRING TO PROVIDE A FUNCTIONAL HEAT TRACE SYSTEM SHALL BE PROVIDED BY THE CONTRACTOR. ALL MATERIAL AND LABOR COSTS TO COMPLETE THIS WORK SHALL BE INCLUDED UNDER PAY ITEM 900.645 SPECIAL PROVISION "ELECTRICAL HEAT TRACE SYSTEM".
6. ALL WORK ASSOCIATED WITH THE SANITARY SEWER NOT SPECIFICALLY INCLUDED UNDER OTHER PAY ITEMS SHALL BE CONSIDERED MAINTENANCE OF EXISTING SEWER SYSTEM AND SHALL BE PAID UNDER CONTRACT ITEM 628.42 TRANSFER TO NEW SYSTEM, SANITARY SEWER.

PLOTTED 2/3/09



404 East Main Street
P.O. Box 72
East Middlebury, VT 05740
Telephone: 802.382-8522
Fax: 802.382-8542
110 Merchants Row
4th Floor, Suite 15
Rutland, VT 05701
Telephone: 802.747-5020
Fax: 802.747-4820
E-mail: info@otterck.com



**STATE OF VERMONT
AGENCY OF TRANSPORTATION**

Town Of	JOHNSON	Bridge No.	5
Highway No.	1	Log Sta.	
		Surv. Sta.	
TH NO. 1 OVER THE GIHON RIVER			
UTILITY SECTIONS			
Designed By	P.D.	Drawn By	J.L./H.B.
Checked By	Date	Bridge Design Supervisor	Date
C.C.	1/09		1/09
PROJECT	JOHNSON	PROJECT NO.	BHO 1448 (29)
		OCE DWG NO.	C-3
Bridge Sheet No.		Sheet	66 of 68