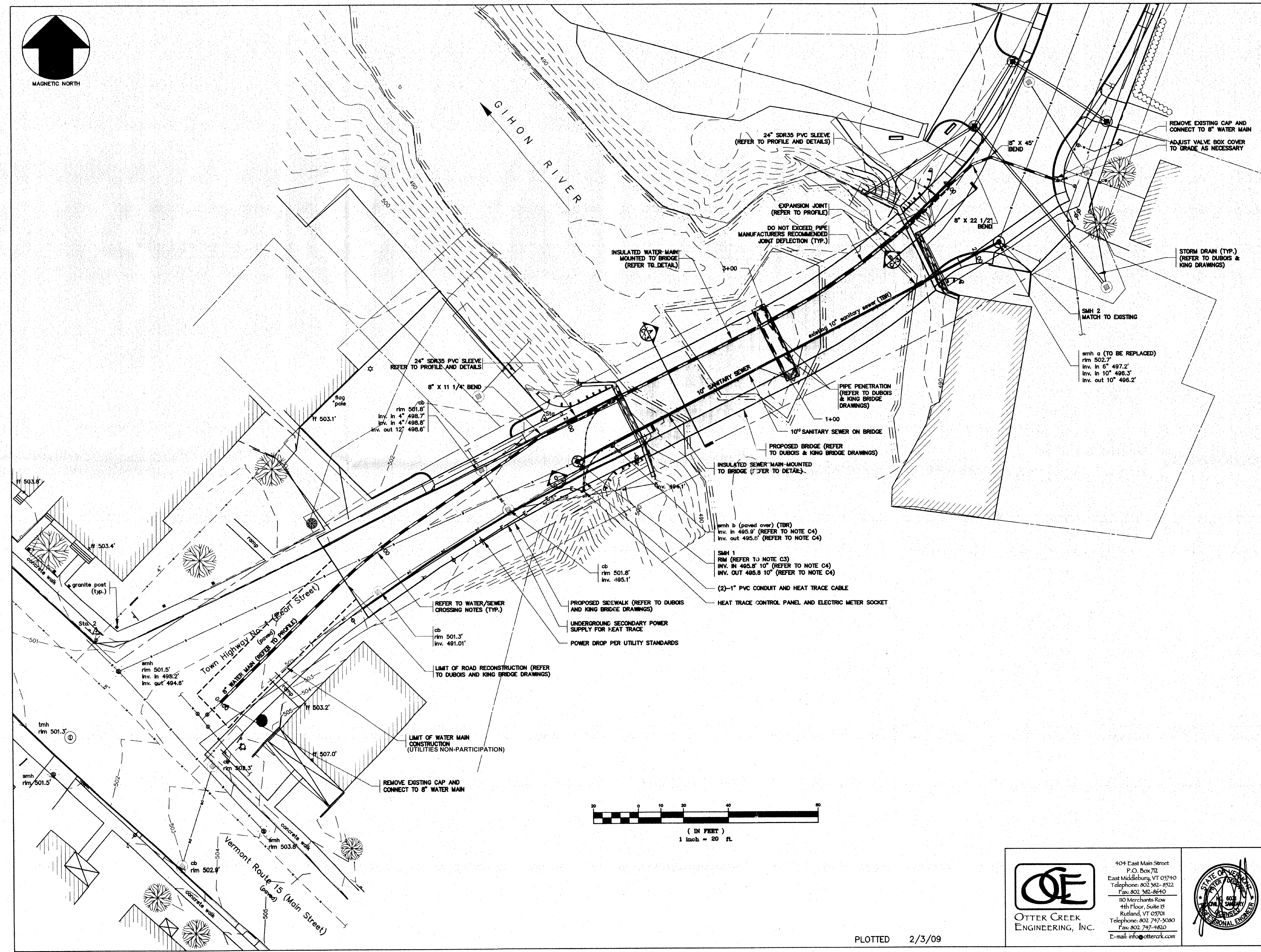


MAGNETIC NORTH



GENERAL NOTES

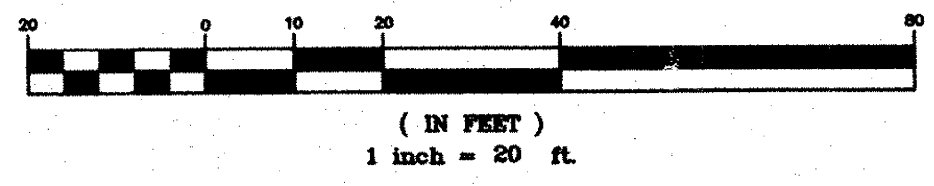
1. A PORTION OF THESE PLANS ARE BASED ON A TOPOGRAPHIC SURVEY CONDUCTED WITH A 4 SECOND TOTAL STATION ON 12/18/02 BY OTTER CREEK ENGINEERING, INC. SURVEY WAS COMPLETED WITH APPROXIMATELY 6" OF SNOW AND ICE ON GROUND. ACTUAL SURFACE MAY VARY.
2. IN THE PREPARATION OF THESE PLANS, DATA FROM THE FOLLOWING SOURCES WAS INCORPORATED:
 - A. "PLAN TITLED "TH NO. 1 OVER THE GIHON RIVER", PROJECT NO. BHO 1448(29), SHEET 15 OF 32, PREPARED FOR THE STATE OF VERMONT AGENCY OF TRANSPORTATION, BY DUBOIS & KING, INC., DATED 8/15/02.
 - B. PLAN TITLED "WATER POLLUTION CONTROL FACILITIES", JOHNSON, VERMONT, PEARL ST.-MAIN ST TO STA. 7+90, PREPARED BY JAMES S. MINGES & ASSOCIATES ENGINEERS, FARMINGTON, CONNECTICUT, DATED JUNE 1, 1989 AS BUILT CONDITIONS.
3. ELEVATION IS BASED ON NAVD 88.
4. COORDINATE SYSTEM IS BASED ON AN ASSUMED 5000N,5000E BASE POINT AND MAGNETIC NORTH AT TIME OF SURVEY.
5. FOR CLARITY, TEXT DENOTING EXISTING ITEMS IS SHOWN IN LOWER CASE, AND TEXT DENOTING PROPOSED ITEMS IS UPPERCASE AND BOLD.
6. REFER TO LEGEND LOCATED ON THIS SHEET FOR SYMBOL DESIGNATIONS.
7. ALL UNDERGROUND UTILITIES ARE SHOWN AS APPROXIMATE LOCATIONS.

CONSTRUCTION NOTES

1. REFER TO DUBOIS AND KING DRAWINGS FOR ALL WORK ASSOCIATED WITH THE BRIDGE, ROADWAY, SIDEWALK AND STORM SEWER.
2. CONTRACTOR SHALL CONTACT THE VILLAGE OF JOHNSON WATER AND LIGHT DEPARTMENT TO LOCATE UTILITIES AND TO COORDINATE ALL INTERCONNECTIONS OF WATER AND SEWER MAINS PRIOR TO ANY CONSTRUCTION.
3. COORDINATE SEWER MANHOLE RIM ELEVATIONS WITH PROPOSED BRIDGE ROADWAY APPROACHES BY DUBOIS & KING, INC.
4. SEWER INVERT INFORMATION FOR smh 1b AND SMH 1 AREA BASED ON RECORD INFORMATION AND HAVE NOT BEEN FIELD VERIFIED. CONTRACTOR TO CONFIRM INVERT OF EXISTING SEWER AND REPORT TO ENGINEER PRIOR TO THE START OF WORK.
5. REFER TO SPECIFICATIONS FOR TEMPORARY SANITARY SEWER BYPASS REQUIREMENTS.

LEGEND

	boundary line/r.o.w.
	road/parking (w/ surface label)
	drive (w/ surface label)
	1 foot contour
	5 foot contour
	underground electric
	overhead utility
	underground telephone
	storm drain
	water main
	sanitary sewer
	sign
	light pole
	utility pole
	guy
	gate valve
	hydrant
	catch basin
	sewer manhole
	deciduous tree
	coniferous tree
	traverse station
	temporary bench mark
	WATER MAIN
	CATCH BASIN (BY OTHERS)
	SEWER MANHOLE
	SANITARY SEWER
	UNDERGROUND ELECTRIC
	HEAT TRACE CABLE/CONDUIT



PLOTTED 2/3/09

OCE
 OTTER CREEK ENGINEERING, INC.
 404 East Main Street
 P.O. Box 712
 East Middlebury, VT 05740
 Telephone: 802.262-4922
 Fax: 802.262-8640
 110 Merchants Row
 4th Floor, Suite 19
 Rutland, VT 05701
 Telephone: 802.747-3080
 Fax: 802.747-4820
 E-mail: info@otterck.com



STATE OF VERMONT AGENCY OF TRANSPORTATION

Town Of	JOHNSON	Bridge No.	5
Highway No.	1	Log Sta.	
		Surv. Sta.	

TH NO. 1 OVER THE GIHON RIVER

SITE PLAN			
Designed By	P.D.	Drawn By	J.L./H.B.
Checked By	C.C.	Date	1/09
		Bridge Design Supervisor	Date 1/09
PROJECT	JOHNSON	PROJECT NO.	BHO 1448 (29)
		CEC DWG NO.	C-1
Bridge Sheet No.		Sheet	64 of 68