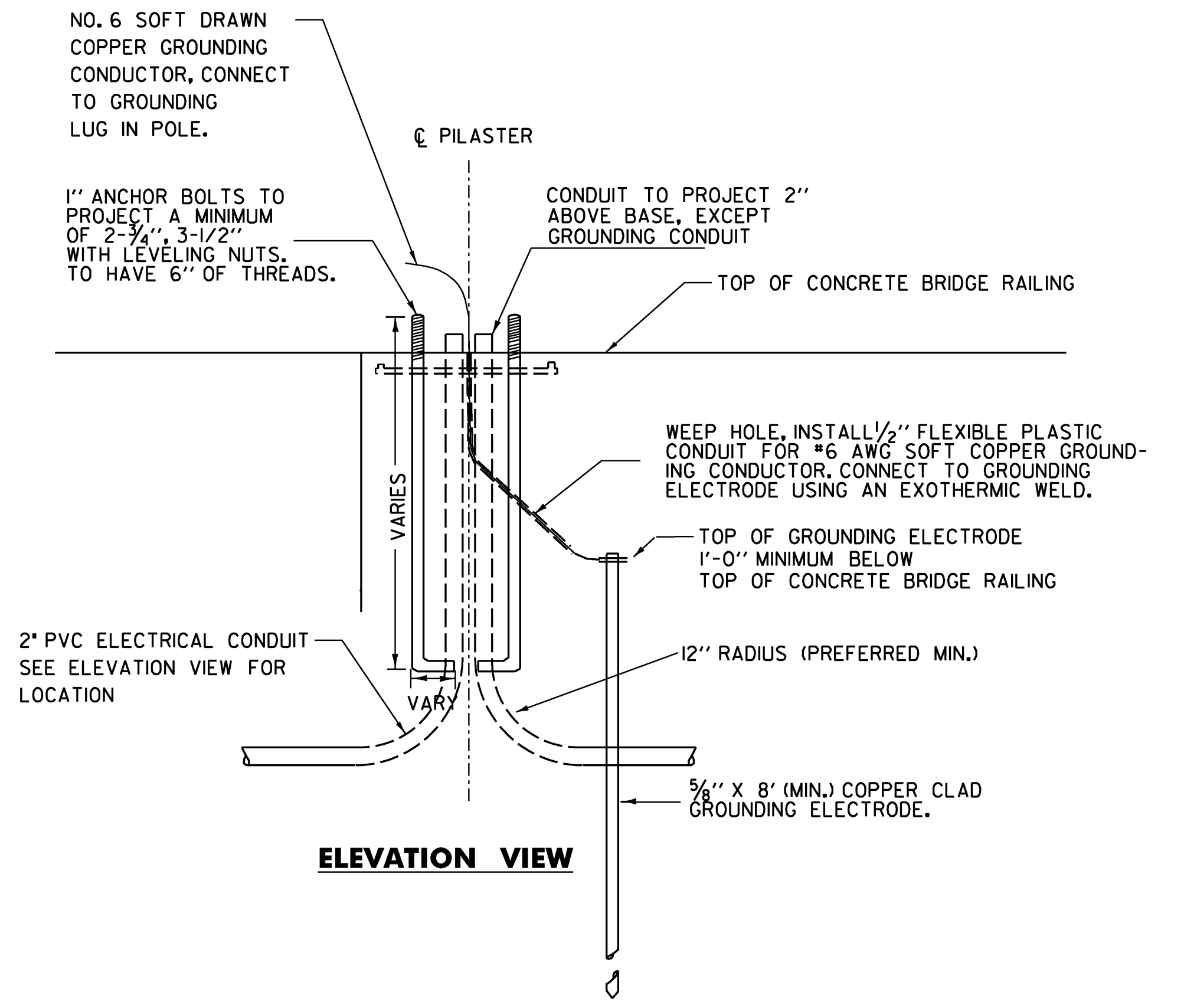
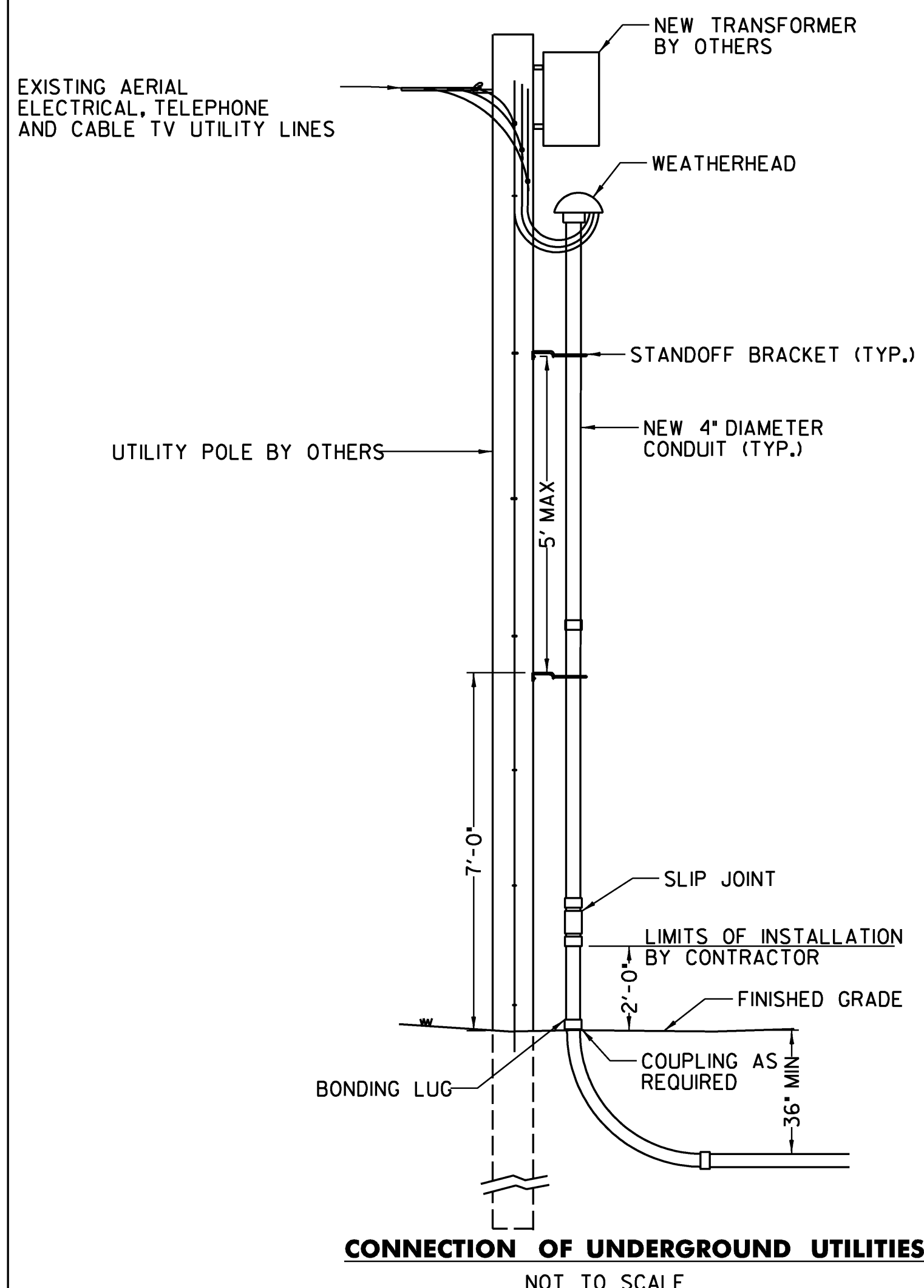


STREET LIGHT LOCATIONS
SCALE: 1/2" = 1'-0"



ELEVATION VIEW



CONNECTION OF UNDERGROUND UTILITIES
NOT TO SCALE

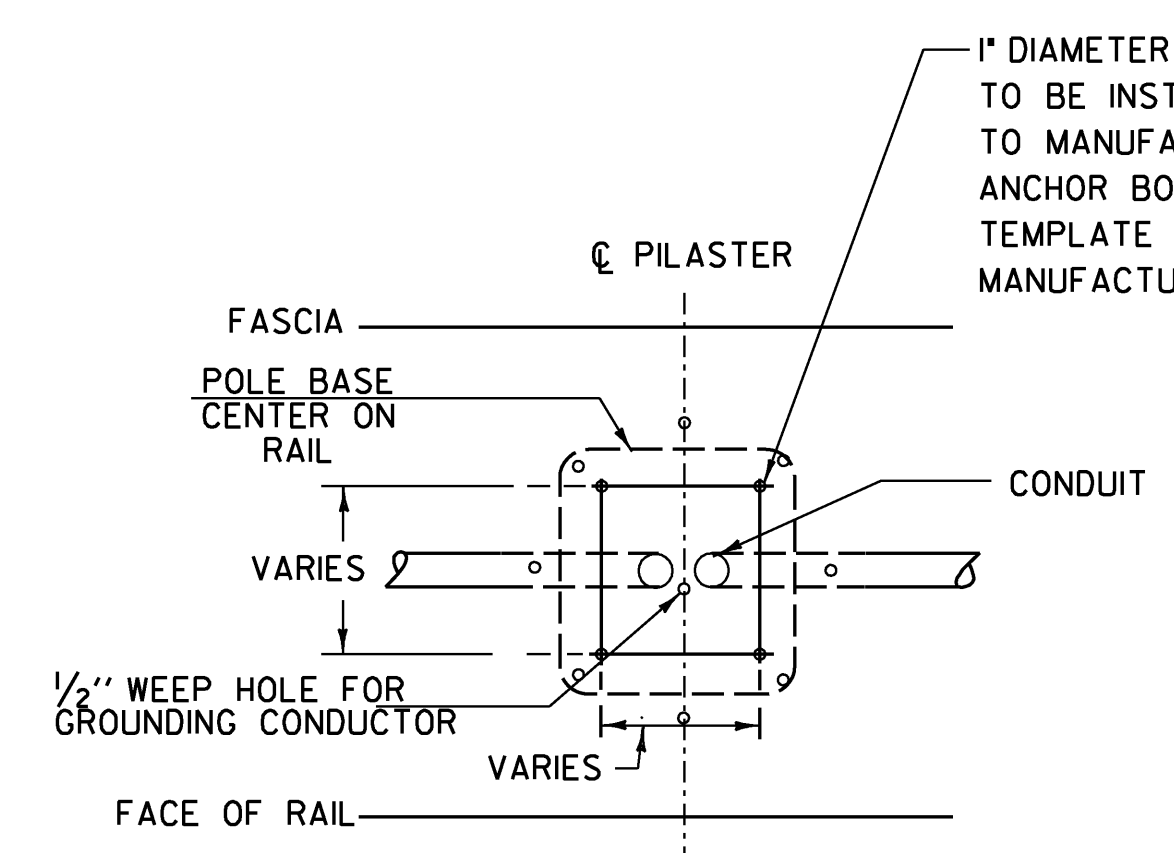
STREET LIGHT NOTES:

1. THE SCOPE OF WORK IS TO PROVIDE ALL LABOR, MATERIALS, SERVICES, SUPPLIES, TOOLS, EQUIPMENT, TRANSPORTATION, AND FACILITIES NECESSARY TO FURNISH AND INSTALL COMPLETE ELECTRICAL WORK AS CALLED FOR ON THE DRAWINGS, SPECIFIED, OR AS MAY REASONABLY BE IMPLIED AS BEING INCIDENTAL TO THIS WORK.
2. ALL MATERIALS AND INSTALLATION SHALL BE IN ACCORDANCE WITH THE LATEST EDITION OF THE NATIONAL ELECTRICAL CODE, AND ALL CODES, REGULATIONS AND REQUIREMENTS OF ALL MUNICIPAL, STATE, FEDERAL, UTILITY, AND OTHER PUBLIC OR PRIVATE AUTHORITIES WHICH HAVE JURISDICTION. IN EACH CASE, CODES ARE MINIMUM REQUIREMENTS.
3. FABRICATION DRAWINGS: SUBMIT COMPLETE CATALOG INFORMATION FOR ALL MATERIALS AND EQUIPMENT TO BE PURCHASED AND USED ON THIS PROJECT, AS SPECIFIED ON THE DRAWINGS AND AS REQUIRED BY SUBSECTION 679.02. DO NOT INSTALL MATERIALS OR EQUIPMENT WITHOUT APPROVAL BY THE ENGINEER. UNAPPROVED MATERIAL ALREADY INSTALLED SHALL BE SUBJECT TO REMOVAL AND REPLACEMENT WITH APPROVED MATERIALS AT THE CONTRACTOR'S EXPENSE.
4. MATERIALS AND EQUIPMENT SHALL BE LISTED BY UNDERWRITERS' LABORATORIES AND SHALL BE INSTALLED IN ACCORDANCE WITH SUCH LISTINGS.
5. INSTALLATION SHALL BE MADE IN ACCORDANCE WITH MANUFACTURER'S RECOMMENDATIONS.
6. CONTRACTOR TO CONTACT VILLAGE OF JOHNSON ELECTRIC DEPARTMENT FOR COORDINATION OF NEW ELECTRICAL SERVICE.
7. METER/DISCONNECT STANCHIONS SHALL INCLUDE MAIN SERVICE DISCONNECT (2 POLE, 80A, 240V, 1 PHASE) AND (6) SIX BRANCH CIRCUIT BREAKERS (1 POLE, 20A, 120V). ALL SERVICE ENTRANCE EQUIPMENT SHALL BE RATED 22 KAIC (MIN.).
8. MAXIMUM OF 270 DEGREES IN TOTAL BEND SHALL BE PERMITTED IN SINGLE RUN OF CONDUIT.
9. LIGHTS SHALL BE FUSED AT BASE WITH Y-TYPE FUSE KIT (EQUIVALENT OF HOMAC/FLOOD SEAL: FYC-6 AND 10 AMP FUSE).
10. UTILIZE DUAL-RATED PARALLEL TAP CONNECTORS AT POLE BASE EQUIVALENT TO ILSCO GTA SERIES WITH INSULATED COVERS.
11. THE LIGHTING SHALL BE FROM KING LUMINAIRE AND SHALL BE AS FOLLOWS:

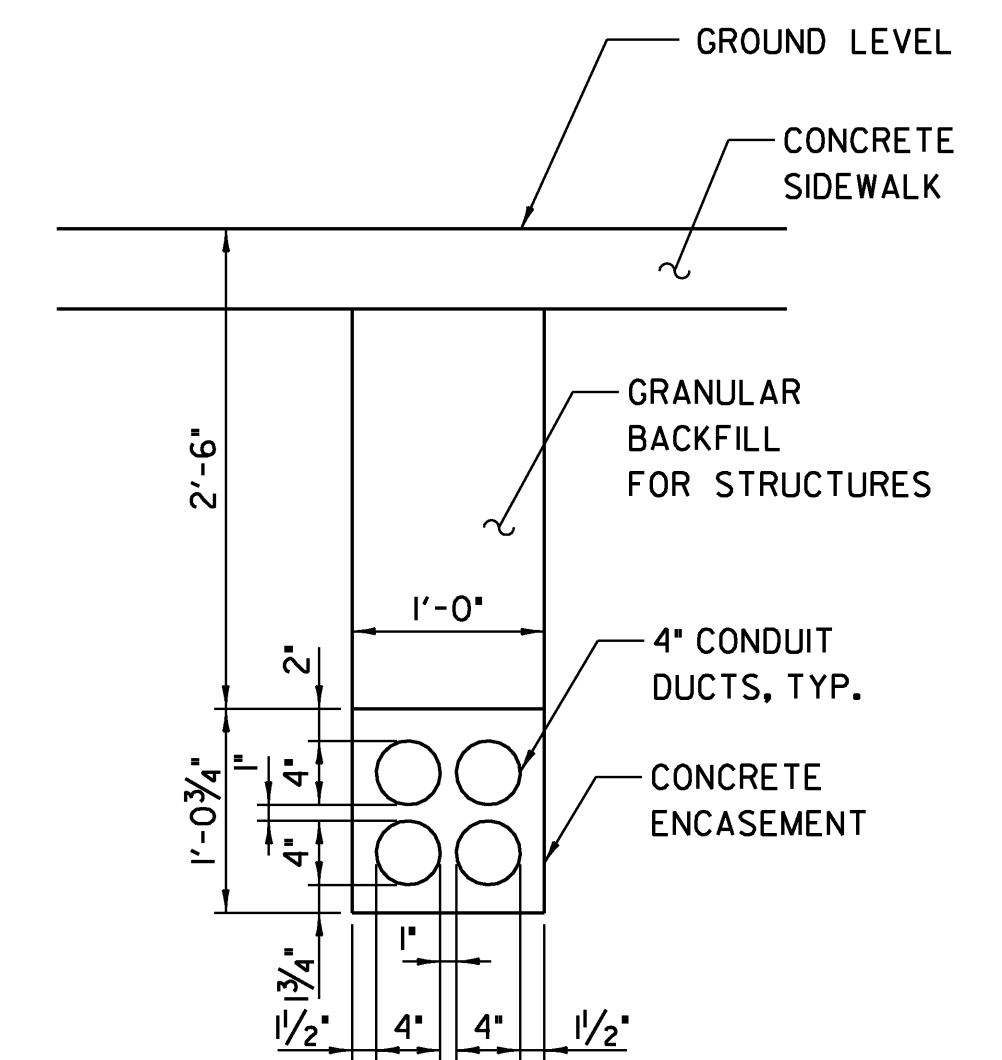
- POLE: KM19FE-14'
THE CLEVELAND POLE
PAINT: FEDERAL GREEN
- ARM: KA30-T-1-4'
SCROLL ARM W/ DECORATIVE SCROLL
PAINT: FEDERAL GREEN
- LEVELING DEVICE: KPL-20 PLUMBIZER
PAINT: FEDERAL GREEN
- LUMINAIRE: K211-EGS-III-100(MED)-MH-120(MT)-KPL20
PAINT: FEDERAL GREEN

CONNECTION OF UNDERGROUND UTILITIES NOTES:

1. CONTRACTOR SHALL SUPPLY ALL CONDUIT NECESSARY TO INSTALL UNDERGROUND UTILITIES AS SHOWN IN THE PLANS. THIS SHALL INCLUDE ALL CONDUIT, WEATHERHEAD, STANDOFF BRACKETS, SLIP JOINTS AND COUPLINGS. THIS WORK SHALL BE PAID FOR INCIDENTAL TO ITEM 678.21, "ELECTRICAL CONDUIT (2" DIA.)."
2. THE LIMITS OF INSTALLATION BY THE CONTRACTOR SHALL EXTEND TO THE LOCATION OF THE SLIP JOINT AT 2'-0" ABOVE GRADE. INSTALLATION ABOVE THE SLIP JOINT SHALL BE COMPLETED BY THE UTILITY COMPANY.



STREET LIGHT MOUNTING DETAILS
NOT TO SCALE



SPECIAL PROVISION (UTILITY DUCT BANK)(4 CONDUIT) TRENCH DETAIL
SCALE: 1" = 1'-0"

STA. 1+25.00 TO STA. 2+71.00
STA. 4+18.50 TO STA. 5+47.84

STATE OF VERMONT AGENCY OF TRANSPORTATION		
Town Of	JOHNSON	Bridge No. 5
Highway No.	1	Log Sta. Surv. Sta.
TH NO. 1 OVER THE GIBON RIVER		
STREET LIGHT AND UTILITY DETAILS		
Designed By	A.P. GUYETTE	Drawn By A.P. GUYETTE
Checked By	Date	Bridge Design Supervisor
J. W. TUCKER	2/09	J. W. TUCKER Date 2/09
PROJECT	JOHNSON	PROJECT NO. BHO 1448 (29)
I.G.C. Info.	z98J372light.dgn	D & K DWG NO.
Bridge Sheet No.		Sheet 46 of 68

DuBois & King
INC.

engineering planning management development

PLOTTED 2/10/2009