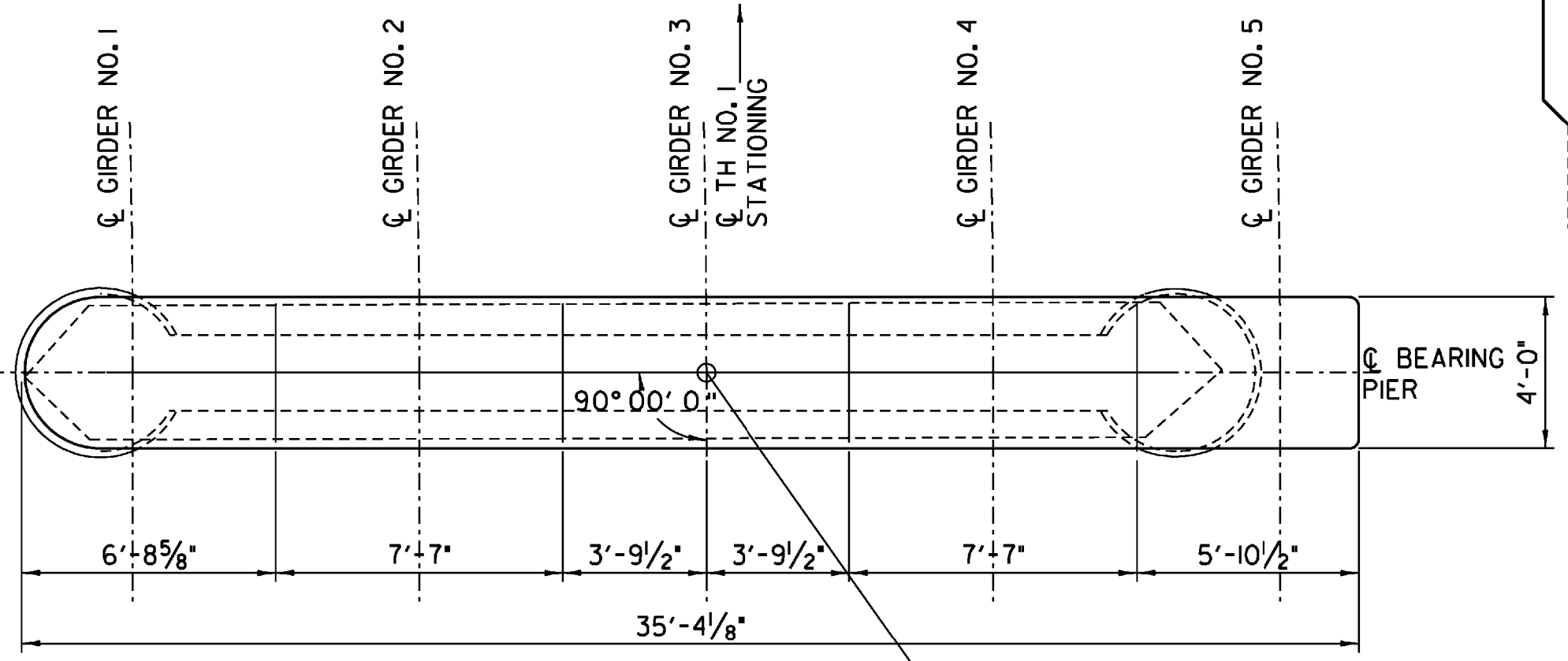
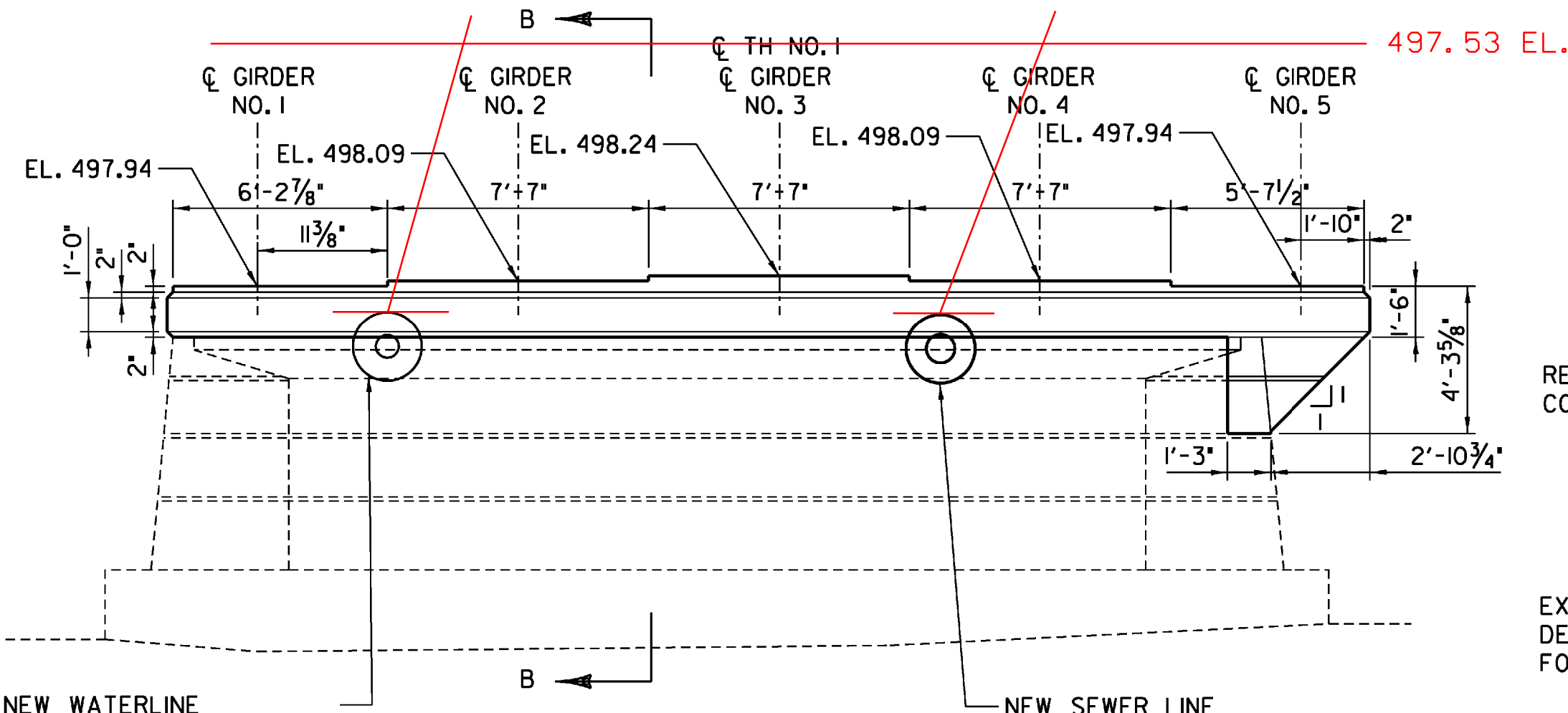


ELEVATION - REMOVAL
SCALE: 1/4" = 1'-0"

SAWCUT EXISTING CONCRETE 1" MINIMUM AT REMOVAL LIMITS
CONTRACTOR SHALL RETAIN EXISTING VERTICAL STEEL EXTENDING ABOVE CUT LINE



PLAN - CONCRETE
SCALE: 1/4" = 1'-0"



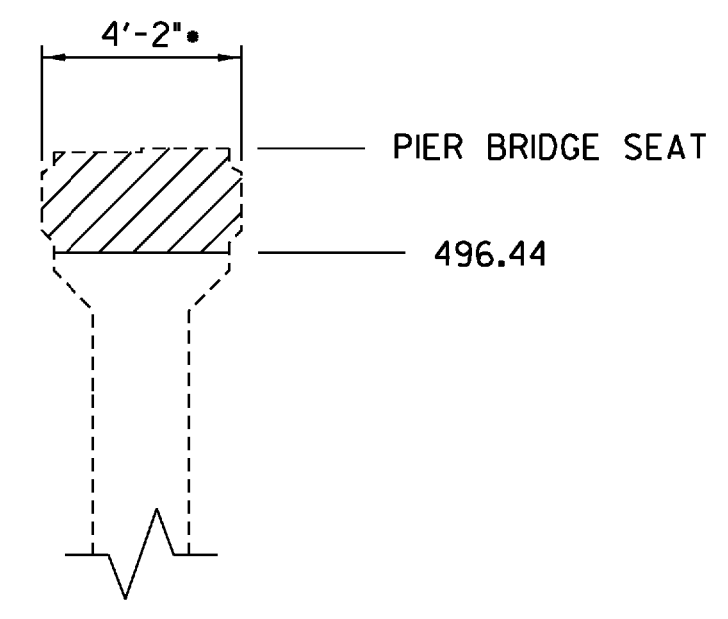
ELEVATION - CONCRETE
SCALE: 1/4" = 1'-0"

NEW WATERLINE DETERMINE FINAL LOCATION IN FIELD. CONCRETE TO BE CORED. PAYMENT UNDER 900.608, *SPECIAL PROVISION (CORING CONCRETE)*

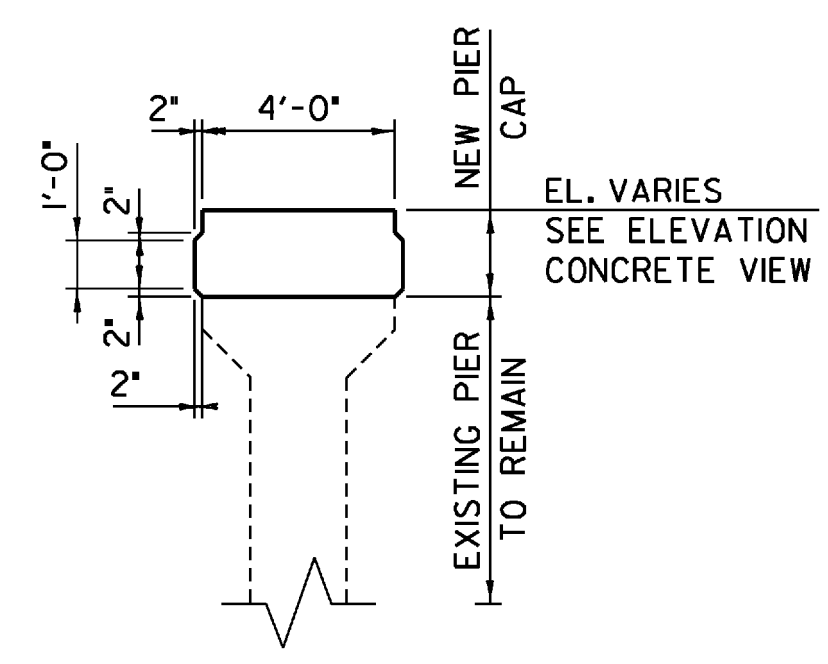
NEW SEWER LINE DETERMINE FINAL LOCATION IN FIELD. CONCRETE TO BE CORED. PAYMENT UNDER 900.608, *SPECIAL PROVISION (CORING CONCRETE)*

REMOVE EXISTING FOOTING TO SOUND CONCRETE AS DETERMINED BY THE ENGINEER. PAYMENT INCIDENTAL TO 529.20, *PARTIAL REMOVAL OF STRUCTURE*

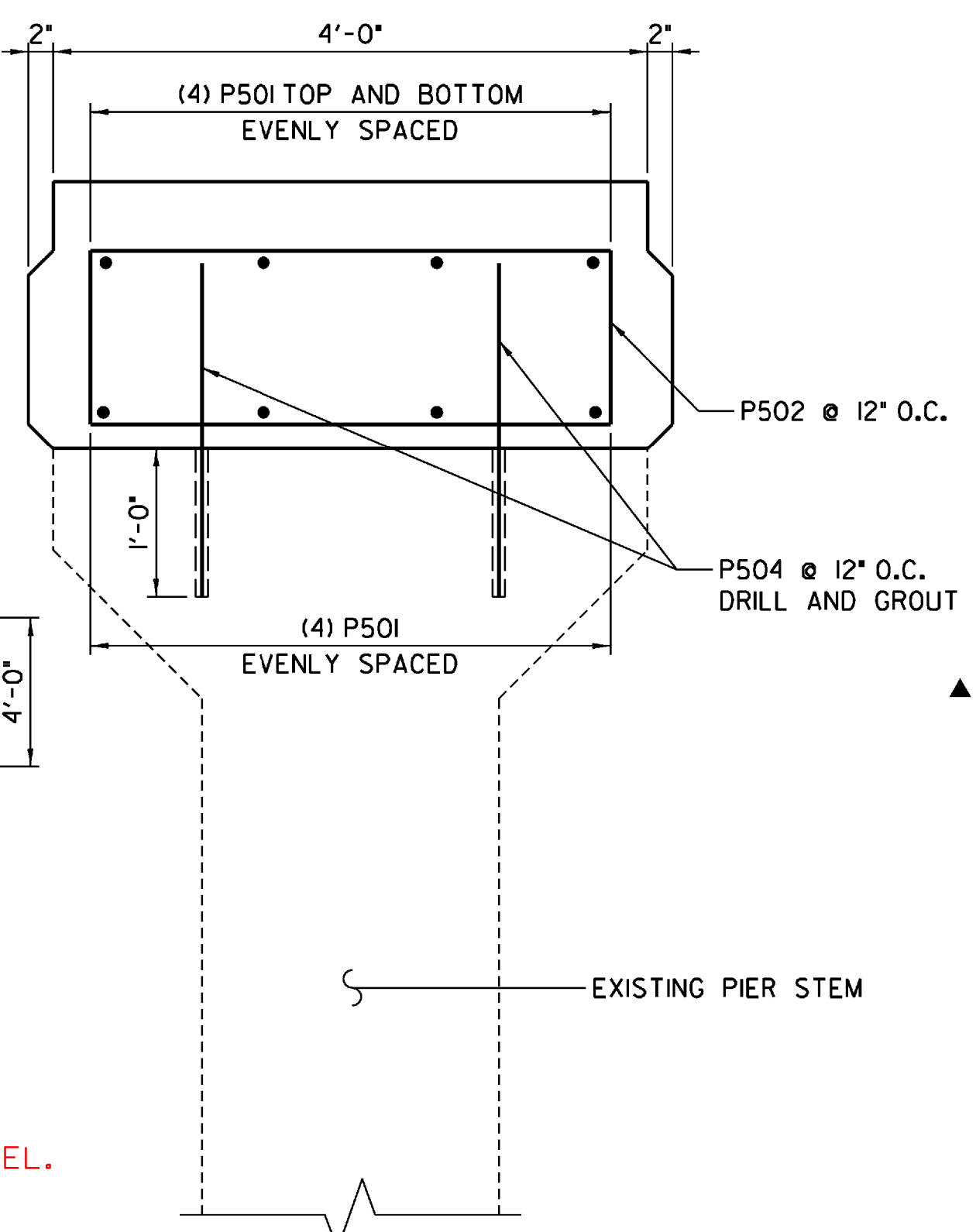
NOTE:
CORING FOR THE PIPES THROUGH THE CONCRETE PIER SHALL BE 4 INCHES GREATER DIAMETER THAN THE OUTSIDE OF THE PIPE JACKET. FOLLOWING THE CORING, A ONE INCH THICK LAYER OF MORTAR, TYPE IV SHALL BE PLACED TO SEAL THE EXPOSED REINFORCEMENT. THE MORTAR AND ITS PLACEMENT SHALL BE INCIDENTAL TO THE CORING ITEM. A ONE INCH CLEAR SPACE SHALL REMAIN BETWEEN THE PIPE JACKET AND THE MORTAR SURFACE.



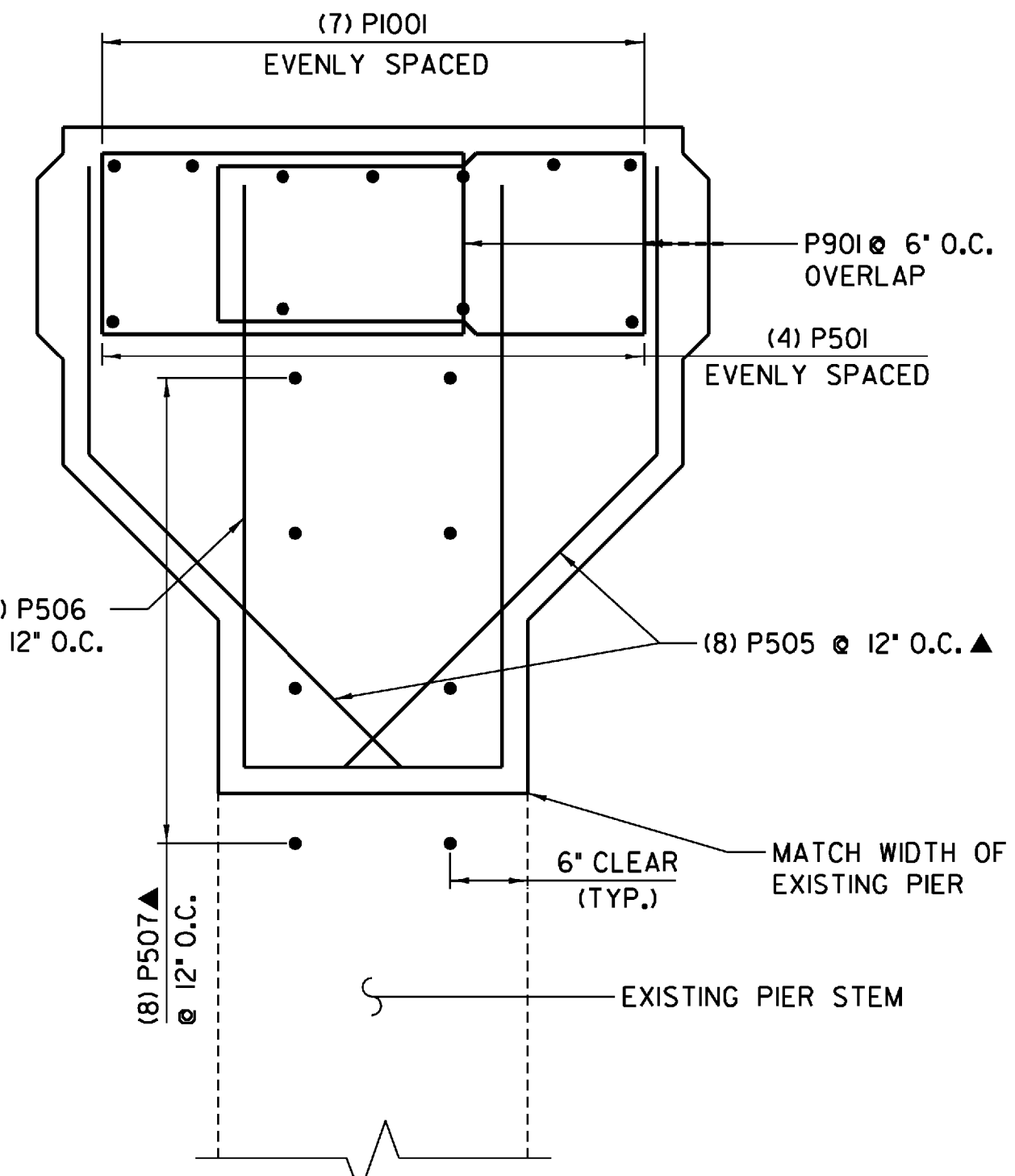
SECTION A - A
SCALE: 1/4" = 1'-0"



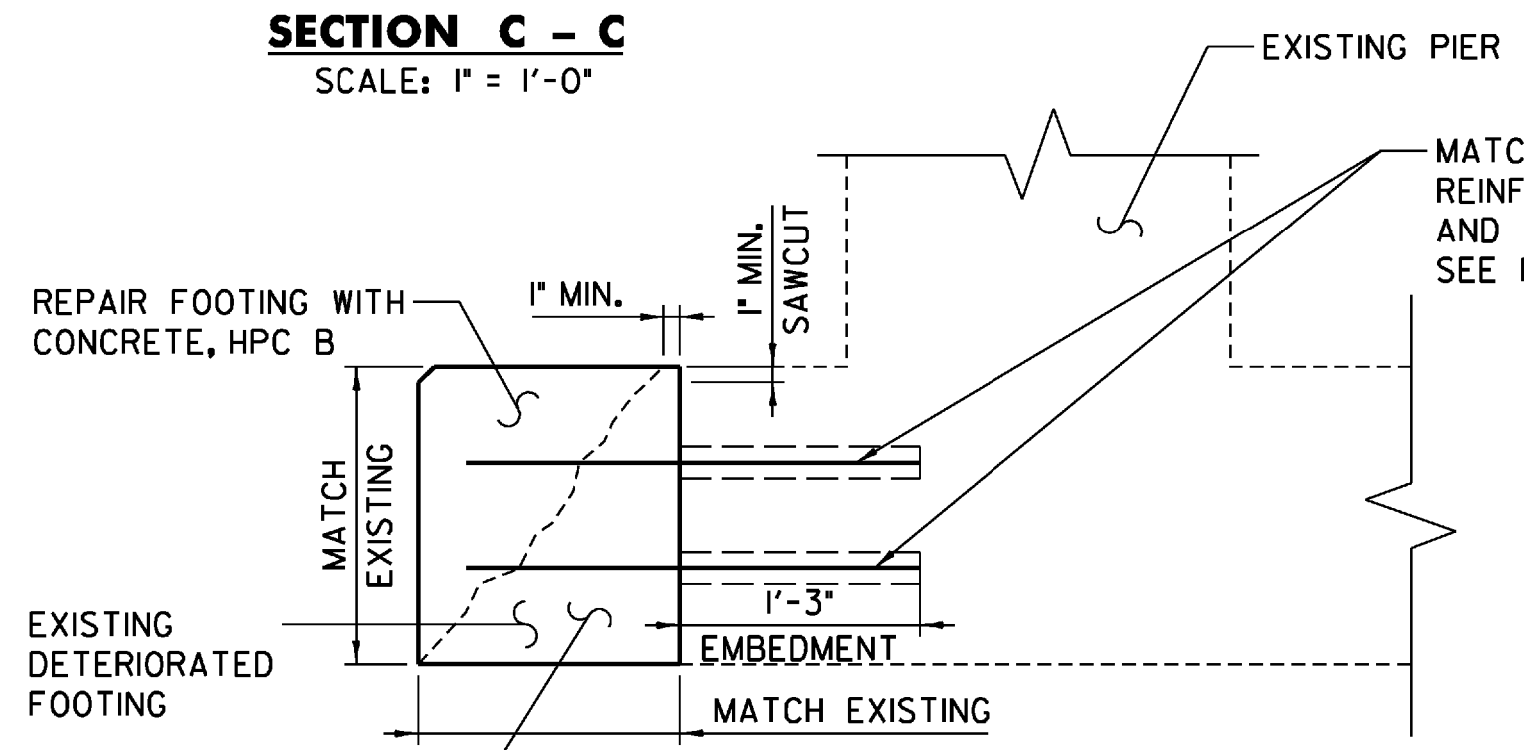
SECTION B - B
SCALE: 1/4" = 1'-0"



SECTION C - C
SCALE: 1" = 1'-0"

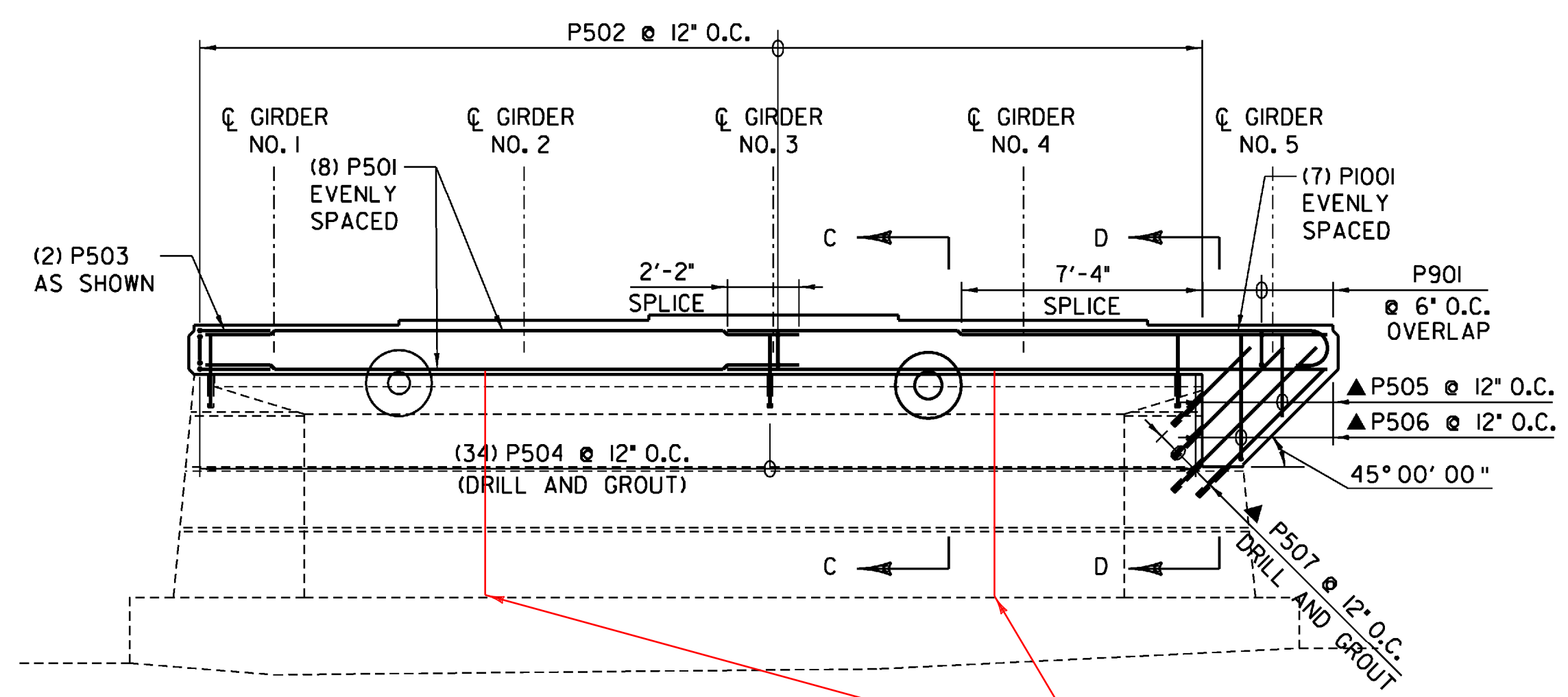


SECTION D - D
SCALE: 1" = 1'-0"



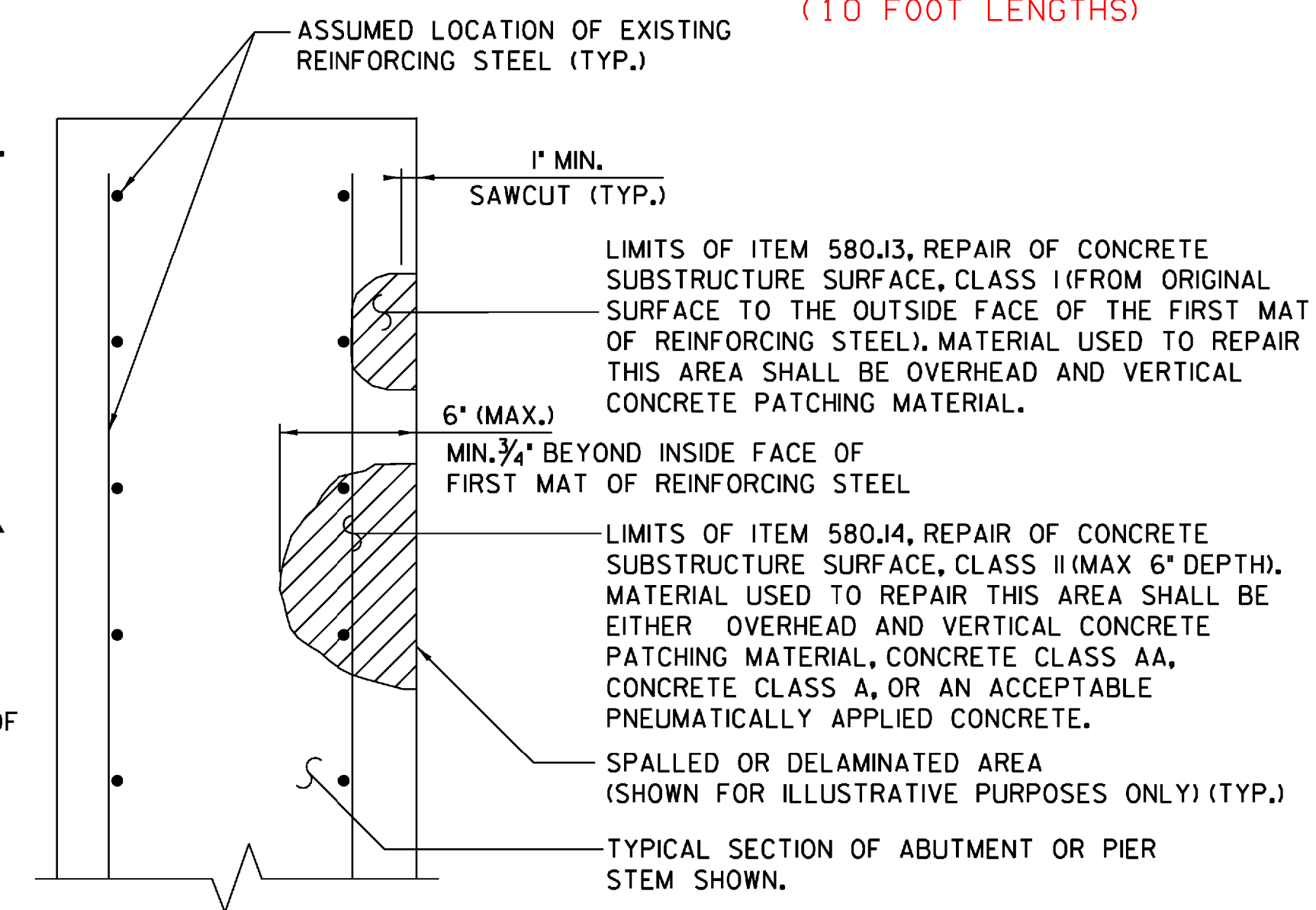
PIER FOOTING REPAIR DETAIL
SCALE: 1" = 1'-0"

NOTE:
UPON REMOVING DAMAGE AND DETERIORATED CONCRETE, EXISTING REINFORCEMENT SHALL REMAIN. EXISTING REINFORCEMENT SHALL BE CLEANED AND INSPECTED. IF REINFORCEMENT IS DETERIORATED, NEW REINFORCEMENT MATCHING THE EXISTING SHALL BE DRILLED AND GROUTED AS DIRECTED BY THE ENGINEER.



ELEVATION - REINFORCEMENT
SCALE: 1/4" = 1'-0"

EXISTING CRACKS
8 ADDITIONAL PIECES OF #5 BAR
4 OVER EACH "CRACK"
(10 FOOT LENGTHS)



REPAIR OF CONCRETE SUBSTRUCTURE SURFACE CLASS I OR CLASS II
N.T.S.

NOTE:
REMOVAL OF EXISTING CONCRETE TO A DEPTH GREATER THAN SPECIFIED FOR ITEM 580.I4 SHALL BE PAID UNDER THE ITEM 580.I5, REPAIR OF CONCRETE SUBSTRUCTURE SURFACE, CLASS III.

STATE OF VERMONT AGENCY OF TRANSPORTATION

Town Of	JOHNSON	Bridge No.	5
Highway No.	1	Log Sta.	
		Surv. Sta.	

TH NO. 1 OVER THE GIBON RIVER PIER DETAILS

Designed By	A.P. GUYETTE	Drawn By	A.P. GUYETTE
Checked By	Date	Bridge Design Supervisor	Date
J. W. TUCKER	2/09	J. W. TUCKER	2/09
PROJECT	JOHNSON	PROJECT NO.	BHO 1448 (29)
I.G.C. Info.	z98j372pd.dgn	D & K DWG NO.	
Bridge Sheet No.		Sheet	40 of 68

DuBois & King
engineering planning management development