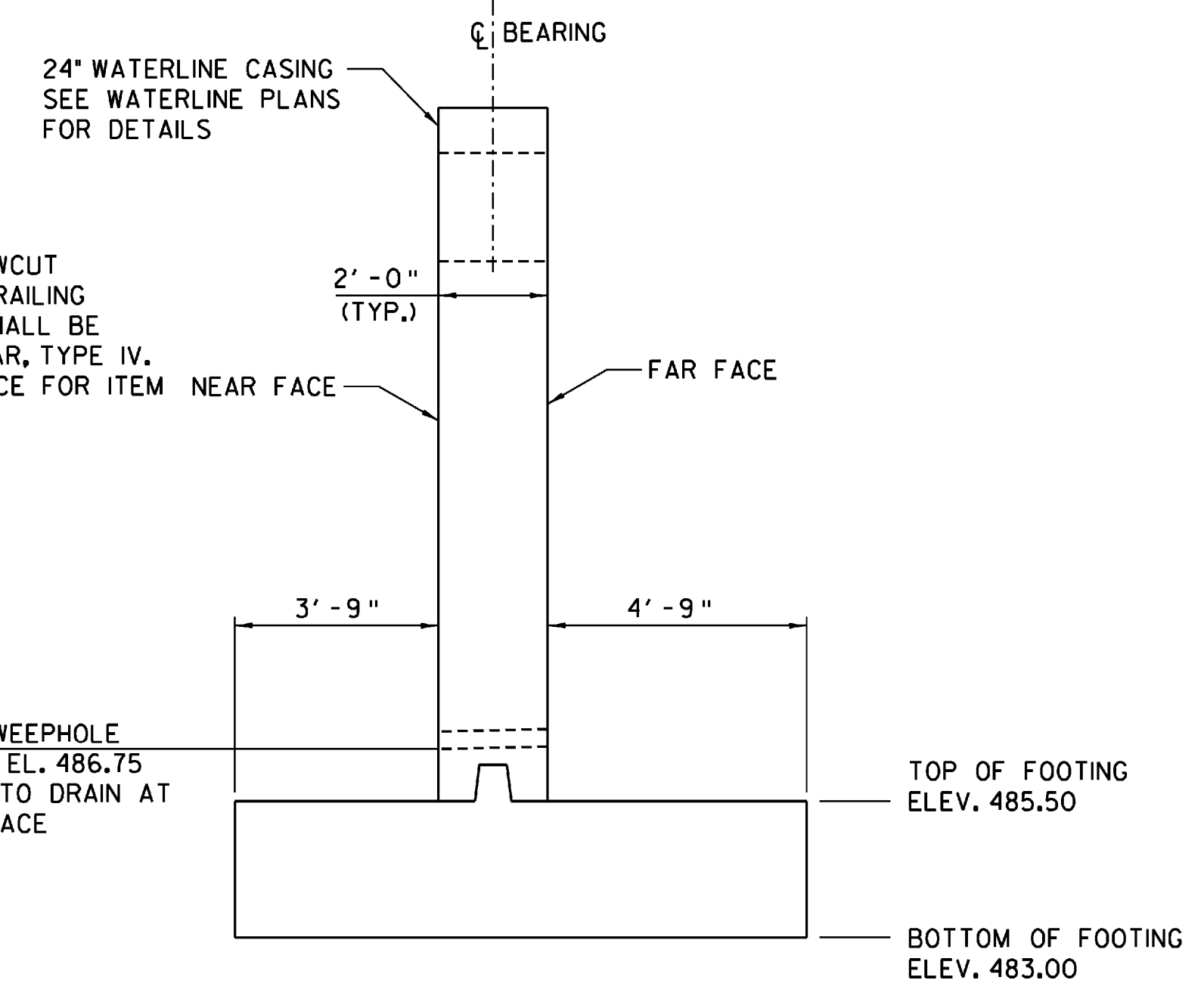


**ABUTMENT NO. 2 - PLAN**

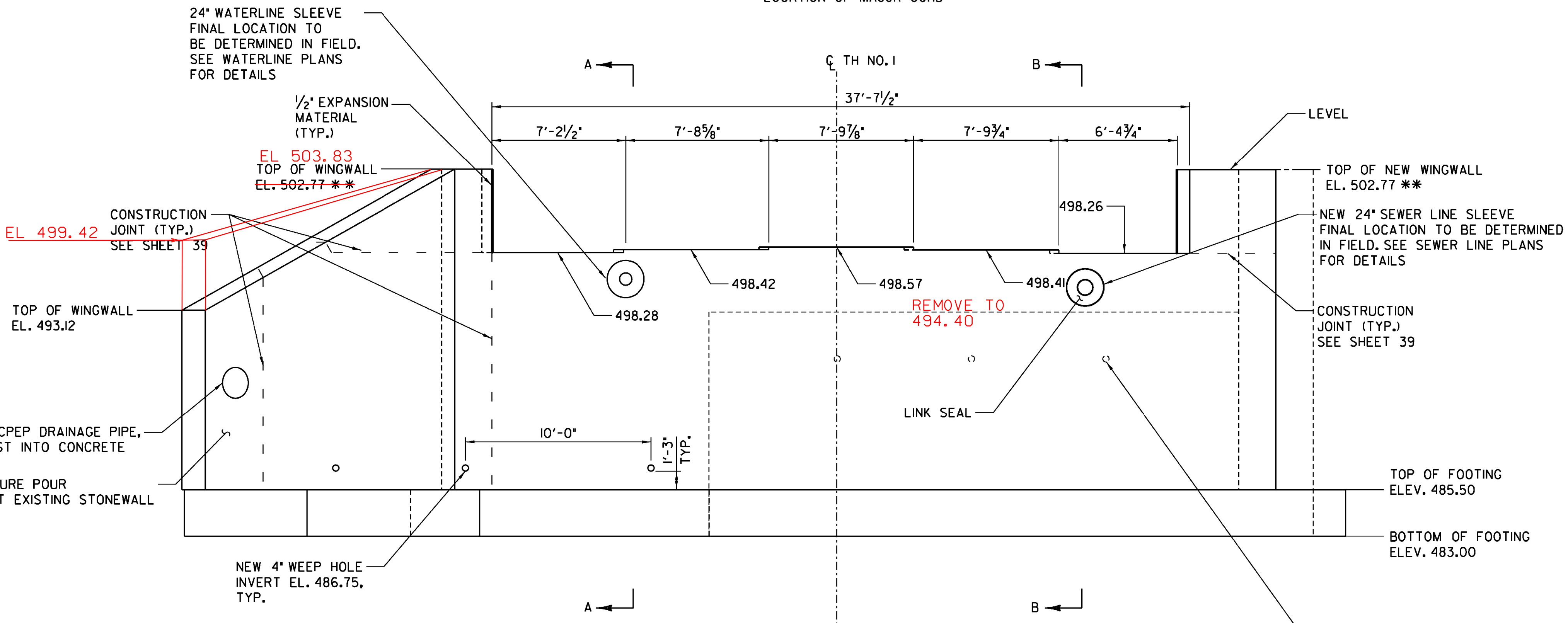
SCALE: 1/4" = 1'-0"

\* SEE FRAMING PLAN FOR LOCATION OF MAJOR CORD



**SECTION A-A**

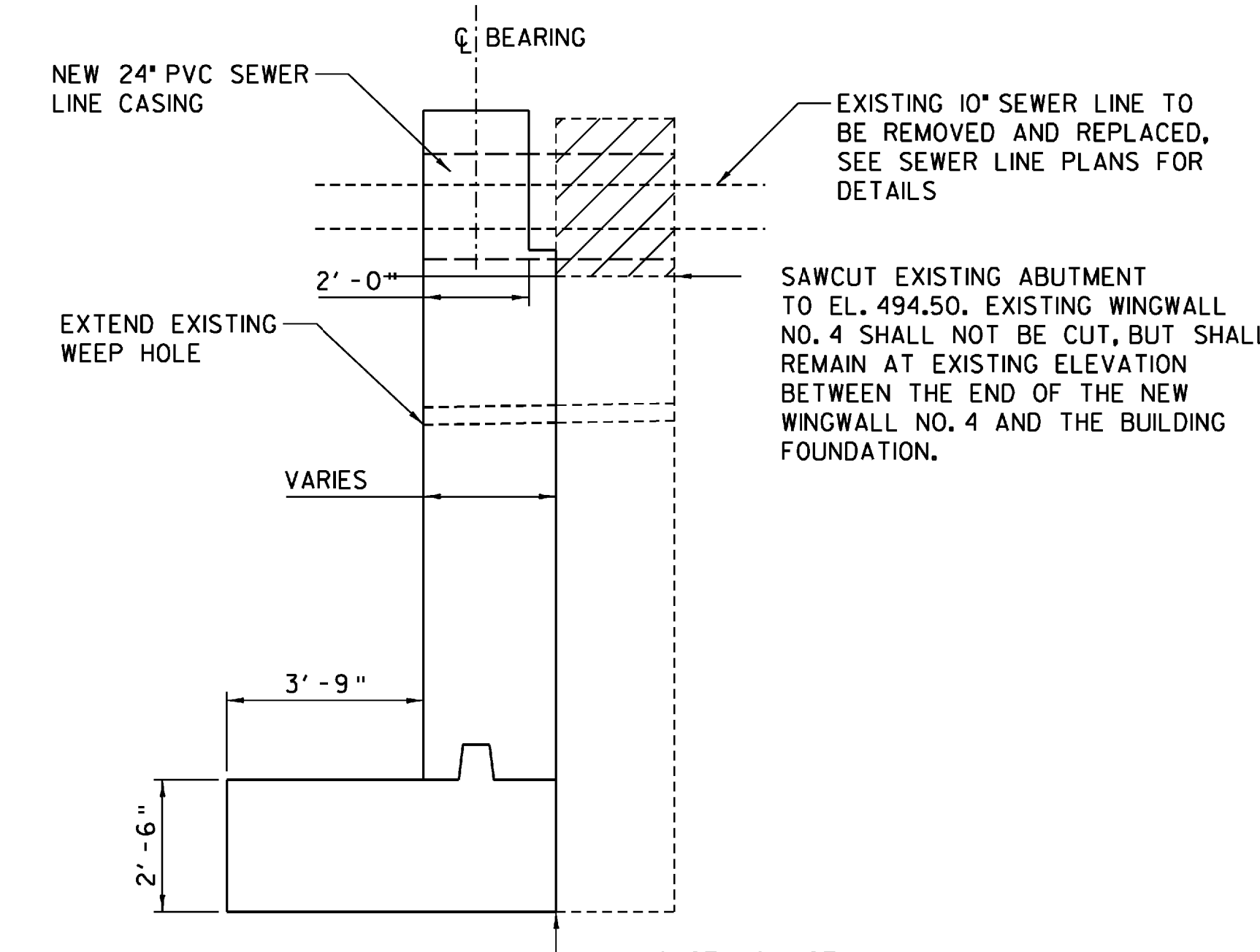
SCALE: 3/8" = 1'-0"



**ABUTMENT NO. 2 - ELEVATION**

SCALE: 1/4" = 1'-0"

\*\* PROPOSED TOP OF WINGWALL ELEVATION TO BE AT THE DECK JOINT (SCORE MARK) AND VERIFIED IN THE FIELD



**SECTION B-B**

SCALE: 3/8" = 1'-0"

**STATE OF VERMONT  
AGENCY OF TRANSPORTATION**

Town Of	JOHNSON	Bridge No.	5
Highway No.	1	Log Sta.	
		Surv. Sta.	

**TH NO. 1 OVER THE GIHON RIVER  
ABUTMENT NO. 2 MASONRY**

Designed By	A.P. GUYETTE	Drawn By	A.P. GUYETTE
Checked By	J. W. TUCKER	Date	2/09
		Bridge Design Supervisor	
		Date	2/09
PROJECT	JOHNSON	PROJECT NO.	BHO 1448 (29)
I.G.C. Info.	z98j372ab2.dgn	D & K DWG NO.	
Bridge Sheet No.		Sheet	36 of 68

**DuBois & King**  
 engineering planning management development

PLOTTED 2/18/2009