

GIRDER NUMBER	ANGLE
1	15° 17' 58"
2	14° 53' 36"
3	14° 30' 31"
4	14° 08' 36"
5	13° 47' 46"

**BEARING ANGLE
ABUTMENT NO. 2**

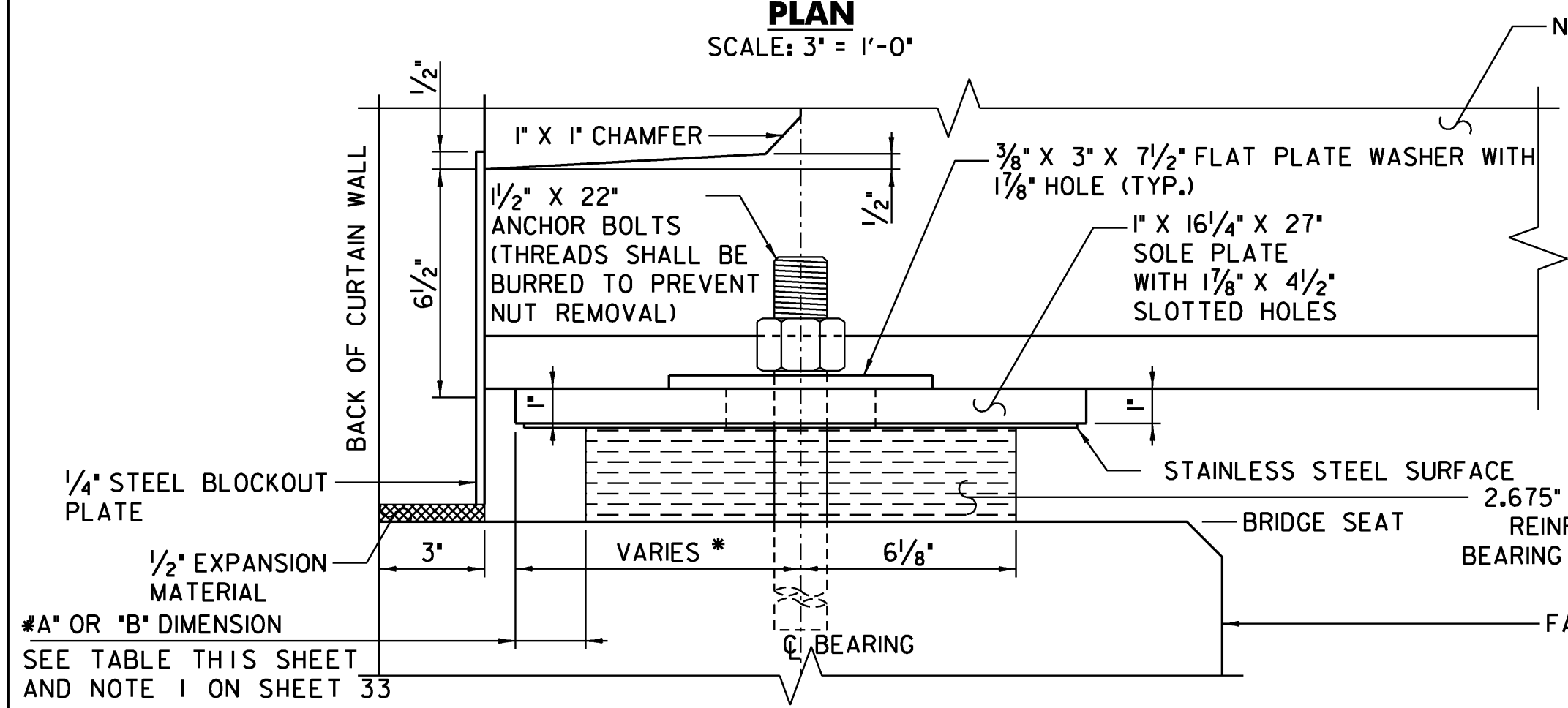
NOTE:
SEE SHEET 33 FOR
BEARING NOTES.

TEMP (°F)	"A" DIST (INCHES)	"B" DIST (INCHES)
120	1 1/8	1 7/8
105	1 1/4	1 7/8
90	1 5/8	2
75	1 7/8	2
60	1 7/8	2 1/8
45	2	2 1/8
30	2 1/8	2 1/8
15	2 1/8	2 1/4
0	2 1/8	2 1/4
-15	2 1/4	2 1/4
-30	2 1/4	2 1/6

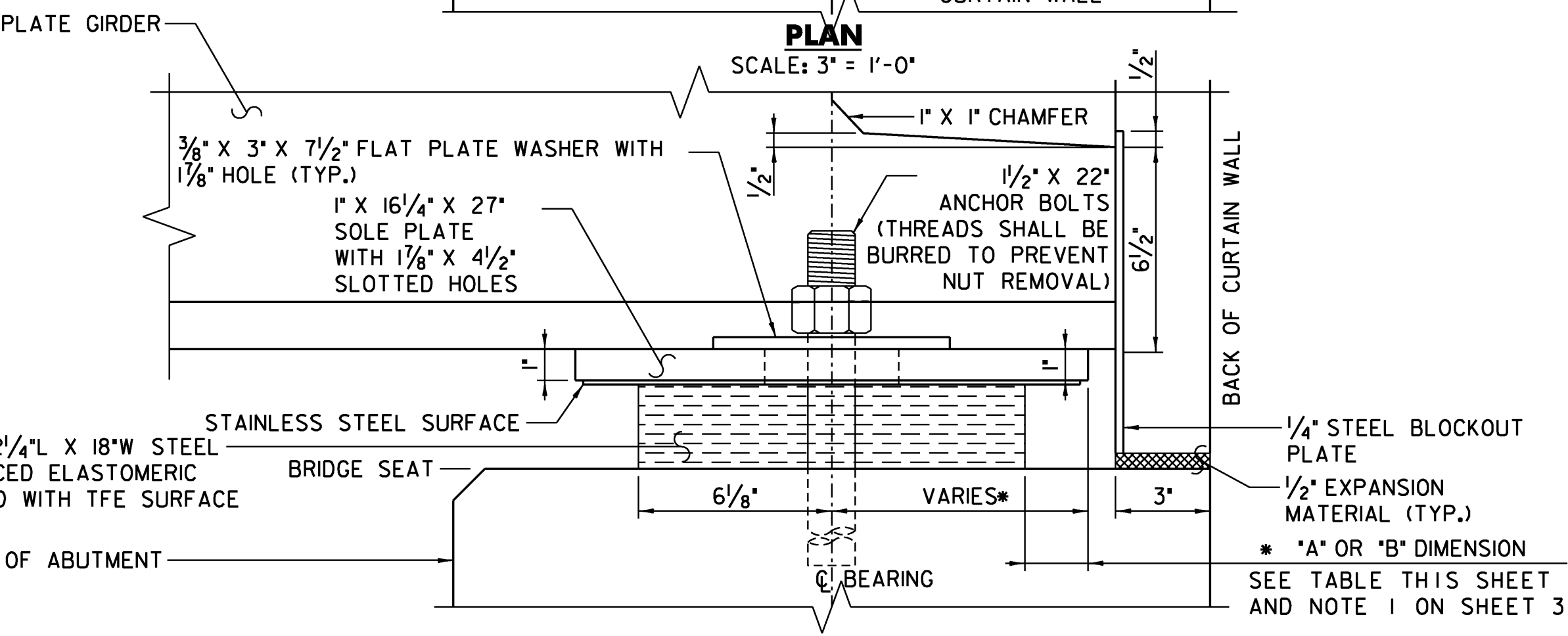
**TEMPERATURE ADJUSTMENT TABLE
ABUTMENT NO. 1**

TEMP (°F)	"A" DIST (INCHES)	"B" DIST (INCHES)
120	1 1/8	1 7/8
105	1 1/4	1 7/8
90	1 5/8	2
75	1 7/8	2 1/8
60	1 7/8	2 1/8
45	2	2 1/8
30	2 1/8	2 1/4
15	2 1/8	2 1/4
0	2 1/8	2 1/4
-15	2 1/4	2 1/4
-30	2 1/4	2 1/6

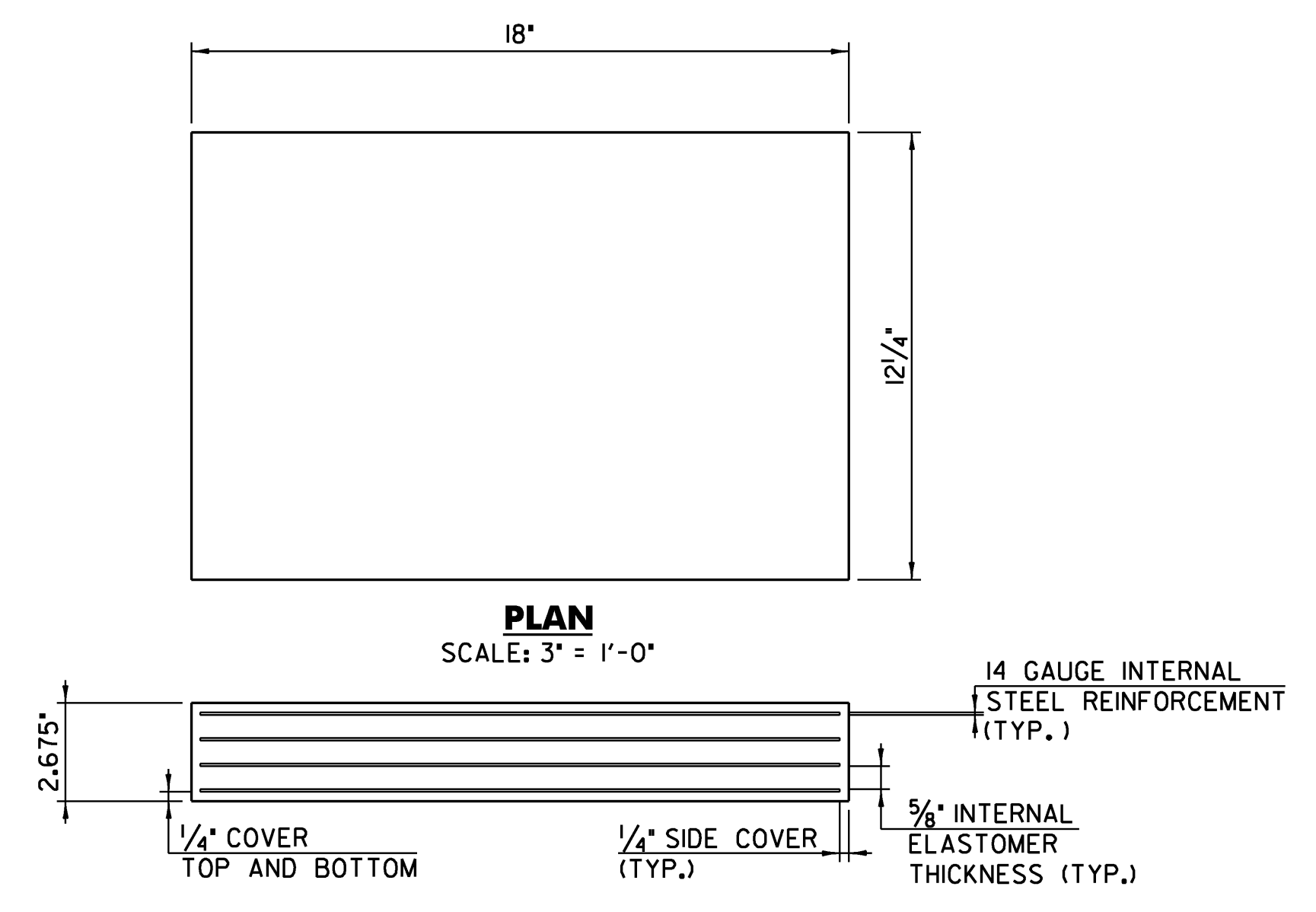
**TEMPERATURE ADJUSTMENT TABLE
ABUTMENT NO. 2**



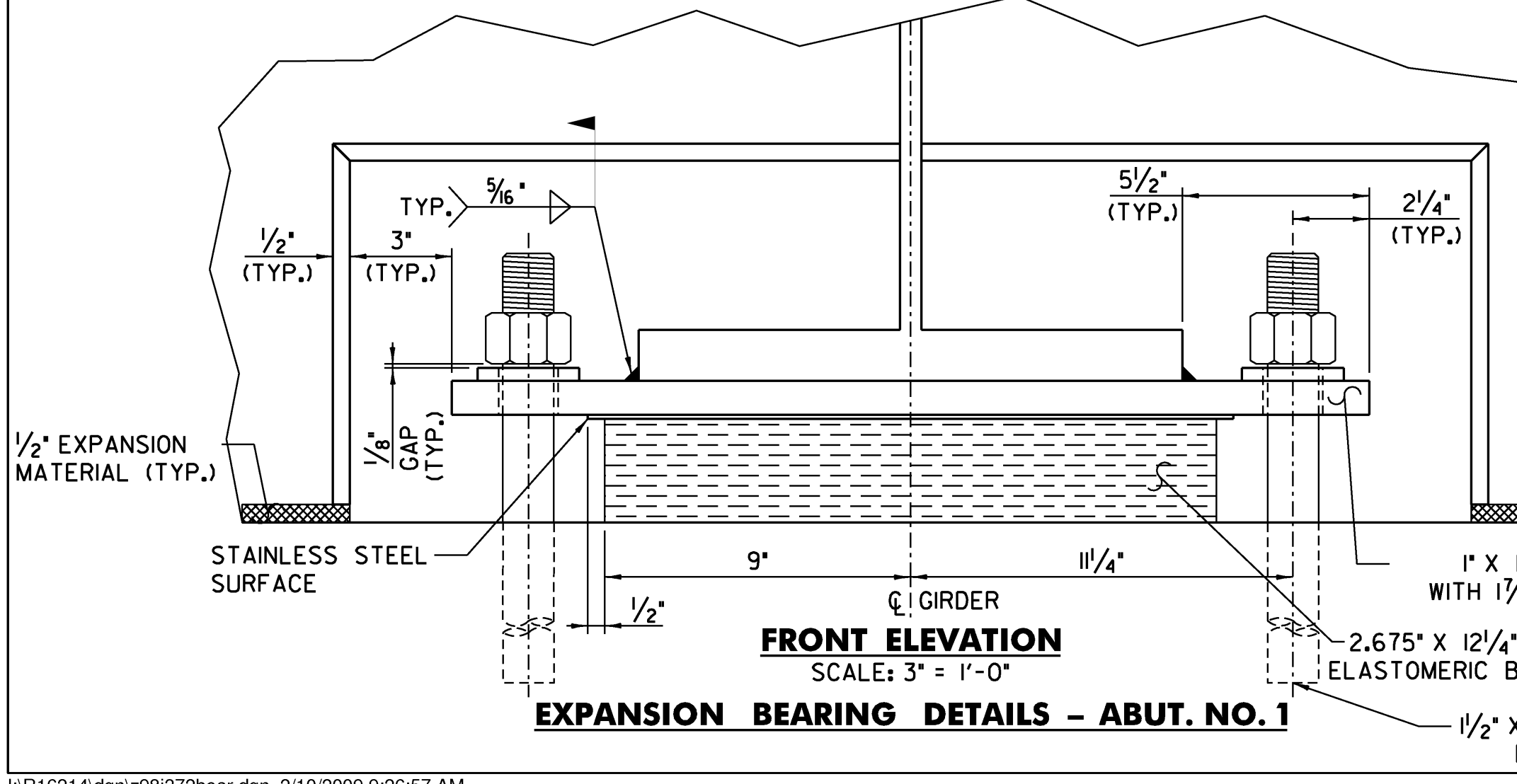
**SIDE ELEVATION
SCALE: 3" = 1'-0"**



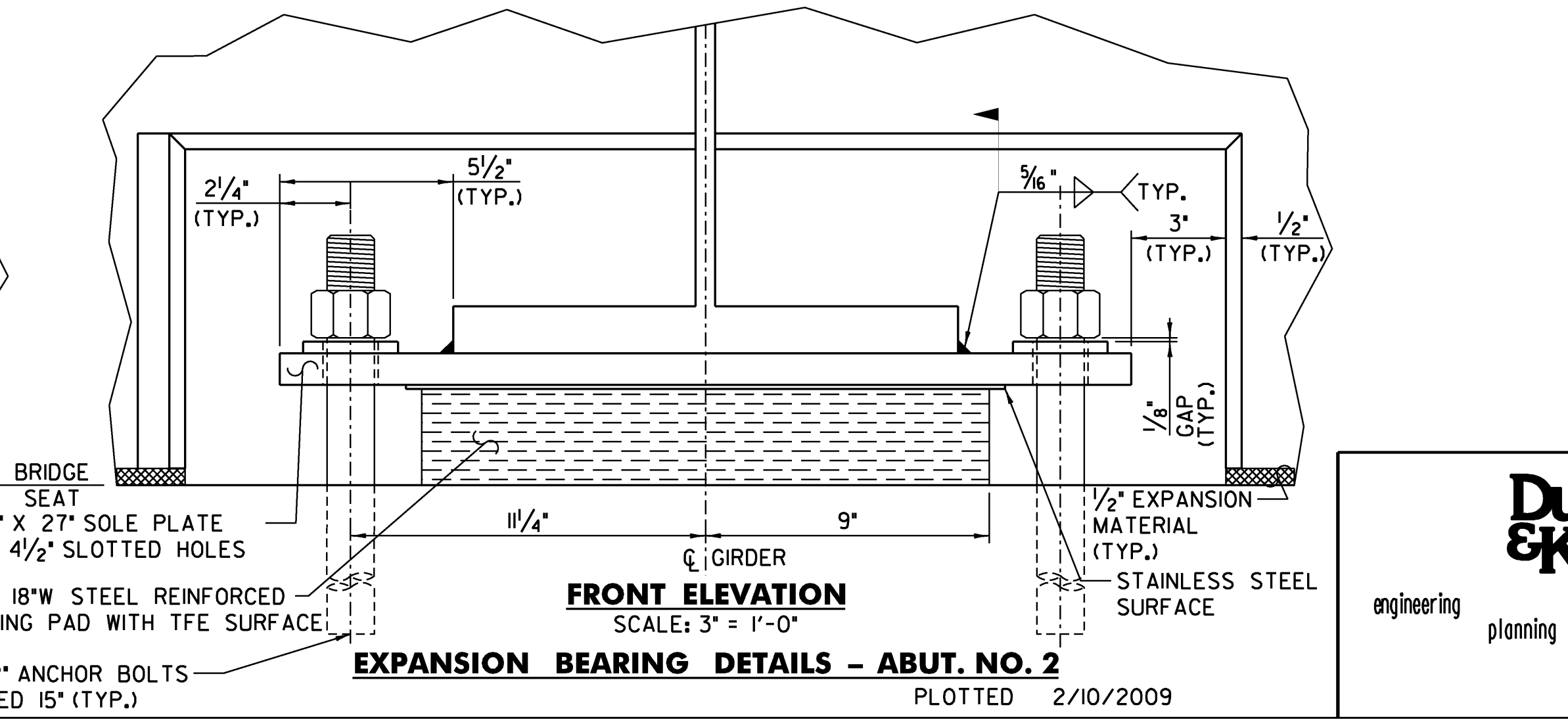
**SIDE ELEVATION
SCALE: 3" = 1'-0"**



**TYPICAL SECTION
SCALE: 3" = 1'-0"**
STEEL REINFORCED ELASTOMERIC BEARING PAD - ABUTMENTS



EXPANSION BEARING DETAILS - ABUT. NO. 1



EXPANSION BEARING DETAILS - ABUT. NO. 2

DuBois & King
INC.
engineering planning management development

STATE OF VERMONT AGENCY OF TRANSPORTATION		
Town Of	JOHNSON	Bridge No. 5
Highway No.	1	Log Sta. Surv. Sta.
TH NO. 1 OVER THE GIHON RIVER		
BEARING DETAILS - ABUTMENTS		
Designed By	A.P. GUYETTE	Drawn By A.P. GUYETTE
Checked By	Date	Bridge Design Supervisor
J. W. TUCKER	2/09	J. W. TUCKER Date 2/09
PROJECT	JOHNSON	PROJECT NO. BHO 1448 (29)
I.G.C. Info.	z98j372bear.dgn	D & K DWG NO.
Bridge Sheet No.		Sheet 32 of 68