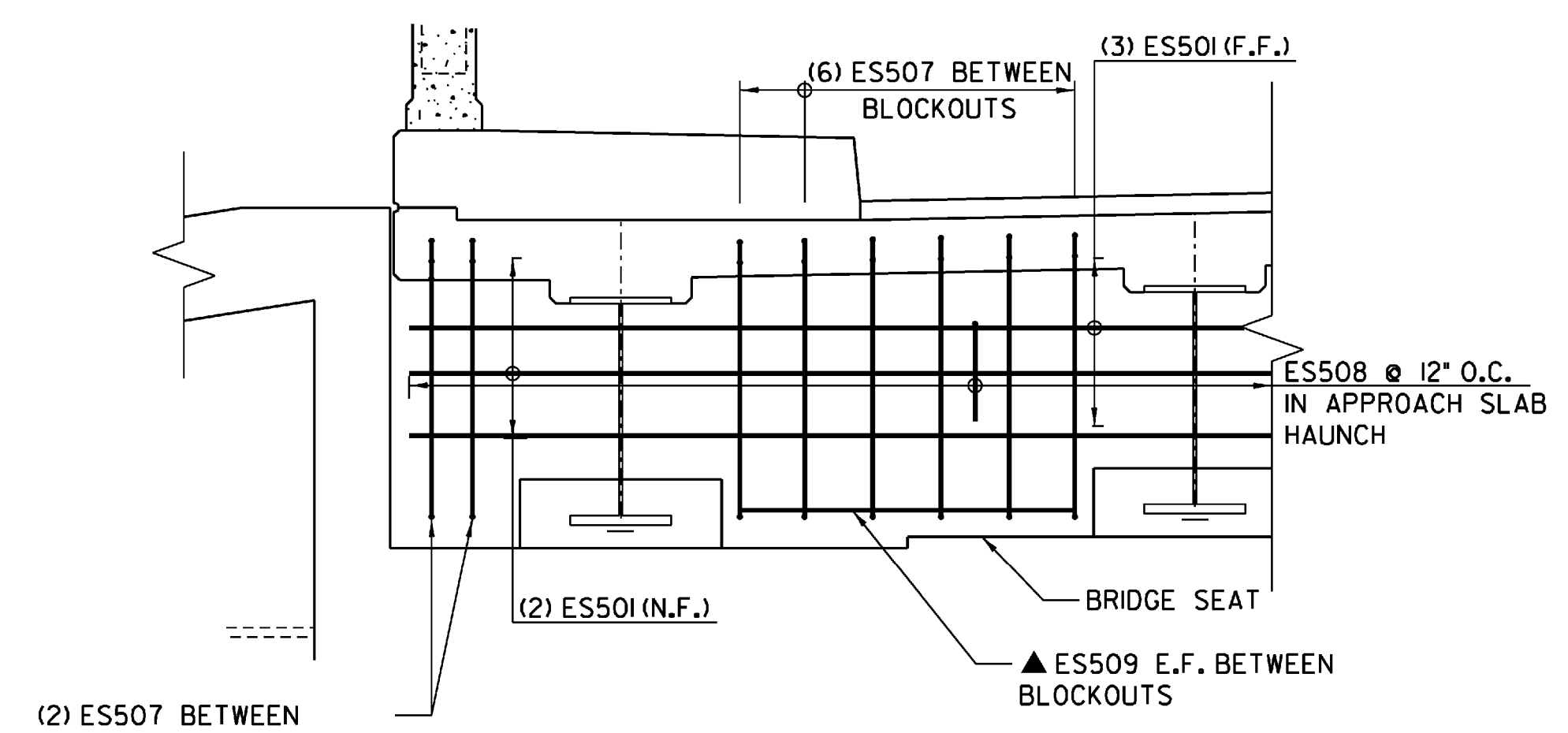
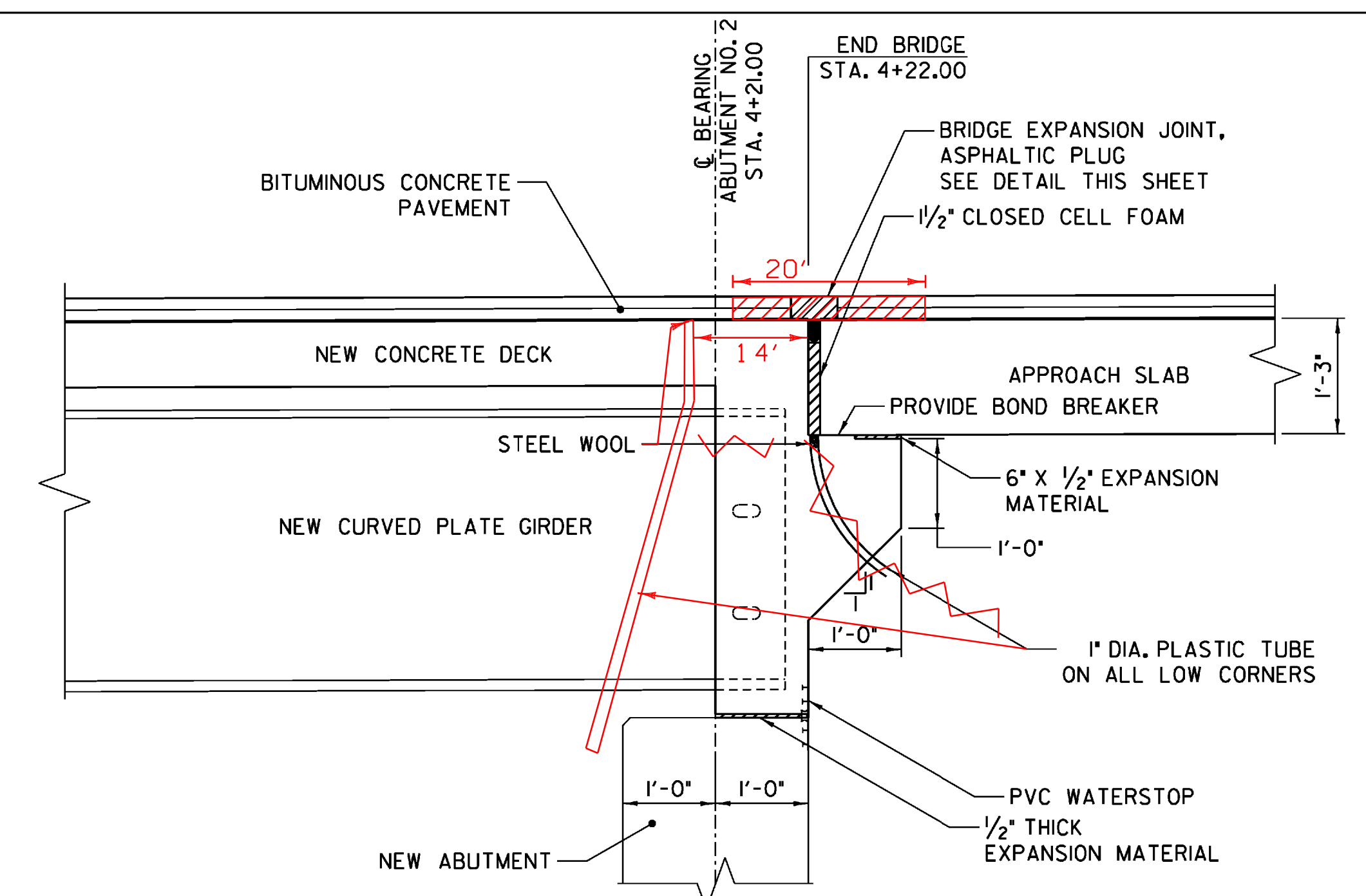


CONCRETE



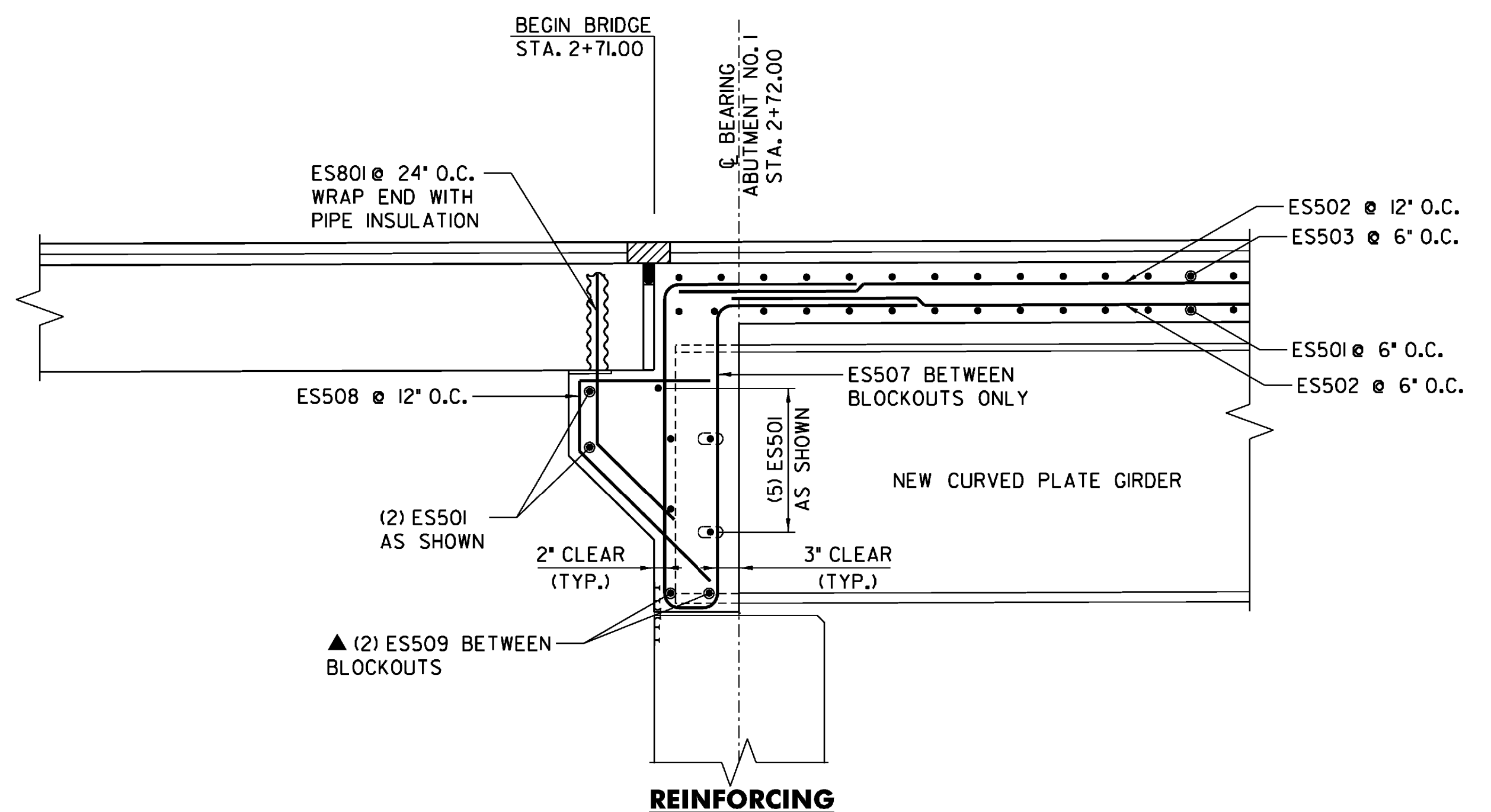
CURTAIN WALL REINFORCING DETAIL

SCALE: 1/2" = 1'-0"



CONCRETE

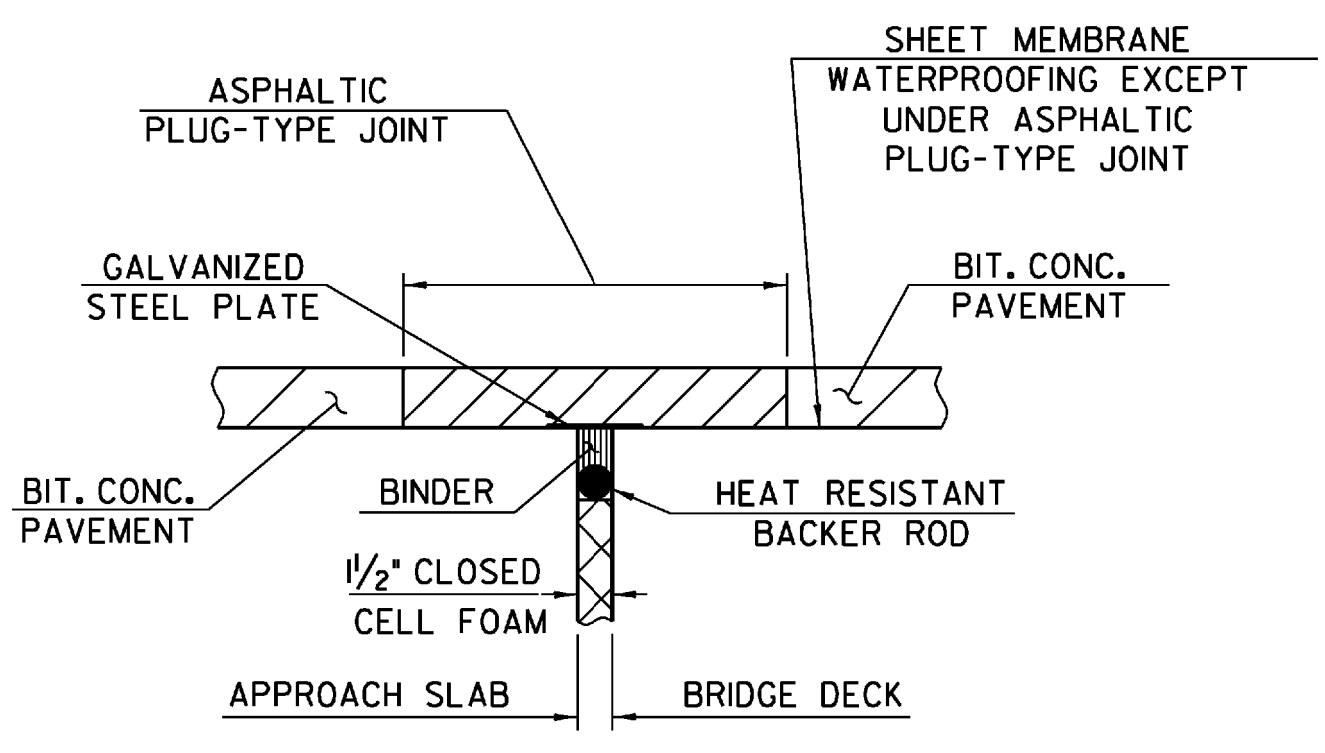
NOTE:
PAYMENT FOR EXPANSION MATERIAL, PLASTIC TUBES, WATERSTOPS, AND PIPE INSULATION WILL BE MADE INCIDENTAL TO THE PAYMENT FOR ADJACENT CONCRETE.



REINFORCING

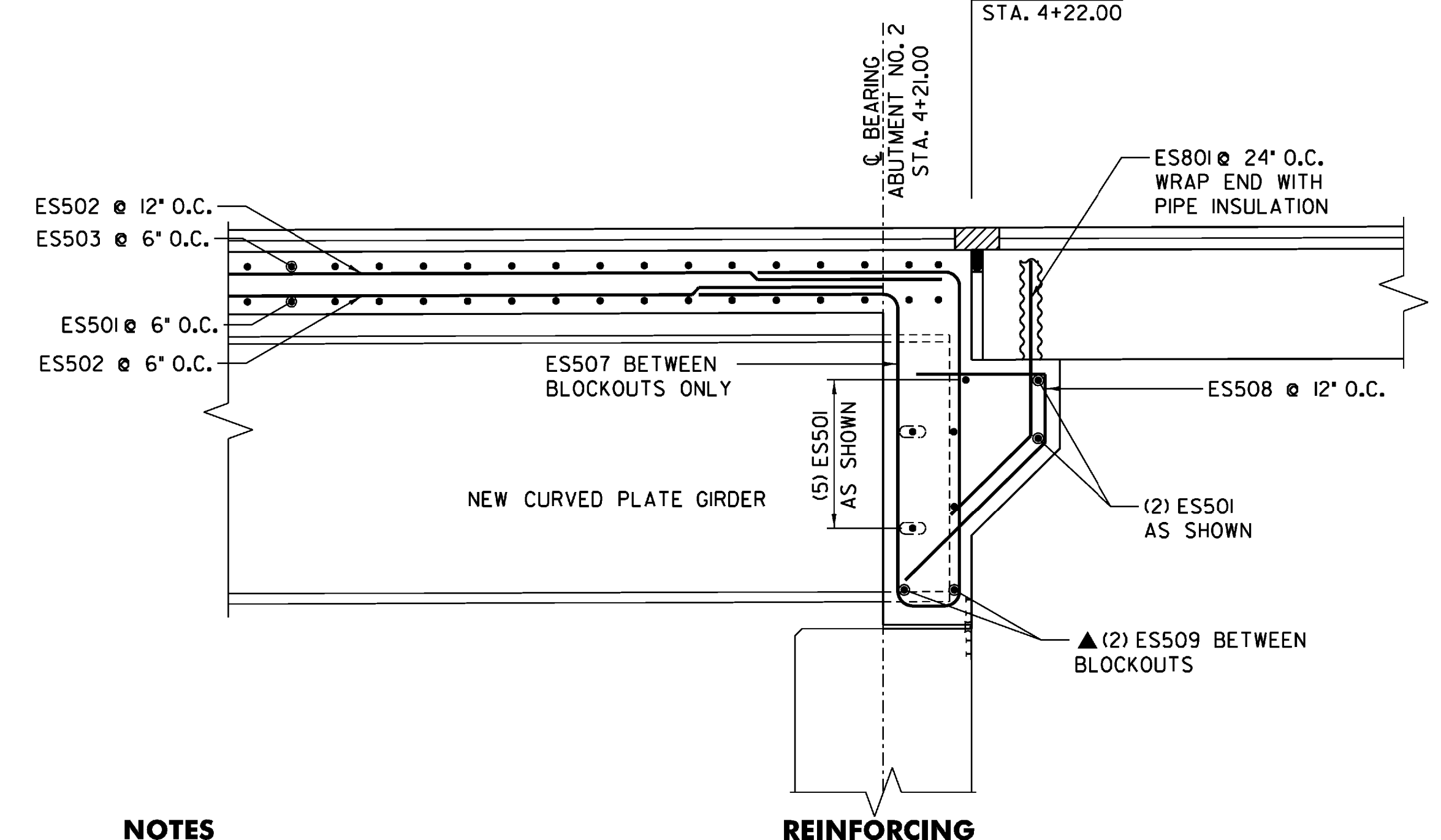
ABUTMENT NO. 1 DECK END DETAIL (EXPANSION END)

SCALE: 3/4" = 1'-0"



ASPHALTIC PLUG-TYPE JOINT DETAIL

NTS



REINFORCING

ABUTMENT NO. 2 DECK END DETAIL (EXPANSION END)

SCALE: 3/4" = 1'-0"

ASPHALTIC PLUG JOINT NOTES

- INSTALLATION**
- LOCATE THE JOINT CENTRALLY OVER THE DECK OVERLAY EXPANSION GAP OR FIXED JOINT MARKED OUT TO THE MANUFACTURER'S RECOMMENDED WIDTH.
 - EXCAVATE THE JOINT AS SHOWN ON THE PLANS WITH SAWS AND PNEUMATIC HAMMER OR A HAMMER AND CHISEL.
 - BLAST CLEAN THE JOINT AREA OF DEBRIS AND ASPHALT. THOROUGHLY DRY THE JOINT AREA WITH HOT COMPRESSED AIR PRIOR TO APPLYING BINDER MATERIAL.
 - REPAIR SPALLED AND DEFECTIVE CONCRETE WITH AN APPROVED MATERIAL AS AGREED UPON BY THE ENGINEER.
 - PLACE PROPERLY SIZED HEAT RESISTANT BACKER ROD IN THE MOVEMENT GAP ALLOWING FOR 1" +/- OF BINDER ABOVE THE ROD.
 - HEAT AND PLACE THE BINDER MATERIAL AS RECOMMENDED BY THE MANUFACTURER.
 - PLACE 1/4" THICK BY 8" WIDE SECTIONS OF STEEL PLATE OVER THE CENTER OF THE MOVEMENT GAP. SECURE THE PLATES FROM MOVING BY INSERTING LOCATING PINS THROUGH THE PRESTAMPED HOLES INTO BACKER ROD AND COVER WITH HOT BINDER. THE STEEL PLATES MAY BE OMITTED WHERE THE APPROACH SLAB IS COVERED WITH A STONE BASE OR BITUMINOUS PAVEMENT AND VERTICAL MOVEMENT OF THE PLATES MIGHT OCCUR.
 - HEAT AND MIX THE BINDER MATERIAL AND AGGREGATE AS RECOMMENDED BY THE MANUFACTURER.
 - INSTALLATION OF MATERIAL, COMPACTION, AND TOP COATING SHALL BE AS RECOMMENDED BY THE MANUFACTURER.
 - IMMEDIATELY AFTER TOP COATING, CAST AN ANTI-SKID MATERIAL OVER THE JOINT TO REDUCE THE RISK OF TRACKING.
 - PROTECTED JOINT FROM TRAFFIC UNTIL THE MATERIAL HAS COOLED TO 51 DEG C (125 DEG F) +/-.
- WEATHER LIMITATIONS. (APPLY BINDER MATERIAL ONLY WHEN THE FOLLOWING CONDITIONS PREVAIL):**
- THE AMBIENT AIR TEMPERATURE IS AT LEAST 10 DEG C (50 DEG F) AND RISING.
 - THE ROAD SURFACE IS SUFFICIENTLY DRY.
 - WEATHER CONDITIONS OR OTHER CONDITIONS ARE FAVORABLE AND ARE EXPECTED TO REMAIN SO FOR THE PERFORMANCE OF SATISFACTORY WORK.

NOTES

- NF = NEAR FACE
- FF = FAR FACE
- EF = EACH FACE
- ▲ = CUT TO FIT IN FIELD
- T+B = TOP AND BOTTOM
- O.C. = ON CENTER
- MINIMUM LAP LENGTH NOT DETAIL SHALL BE 2'-2"

STATE OF VERMONT AGENCY OF TRANSPORTATION			
Town Of	JOHNSON	Bridge No.	5
Highway No.	1	Log Sta.	
		Surv. Sta.	
TH NO. 1 OVER THE GIHON RIVER			
DECK END DETAILS			
Designed By	A.P. GUYETTE	Drawn By	A.P. GUYETTE
Checked By	Date	Bridge Design Supervisor	Date
J. W. TUCKER	2/09	J. W. TUCKER	2/09
PROJECT	JOHNSON	PROJECT NO.	BHO 1448 (29)
I.G.C. Info.	z98j372ded.dgn	D & K DWG NO.	
Bridge Sheet No.		Sheet	28 of 68