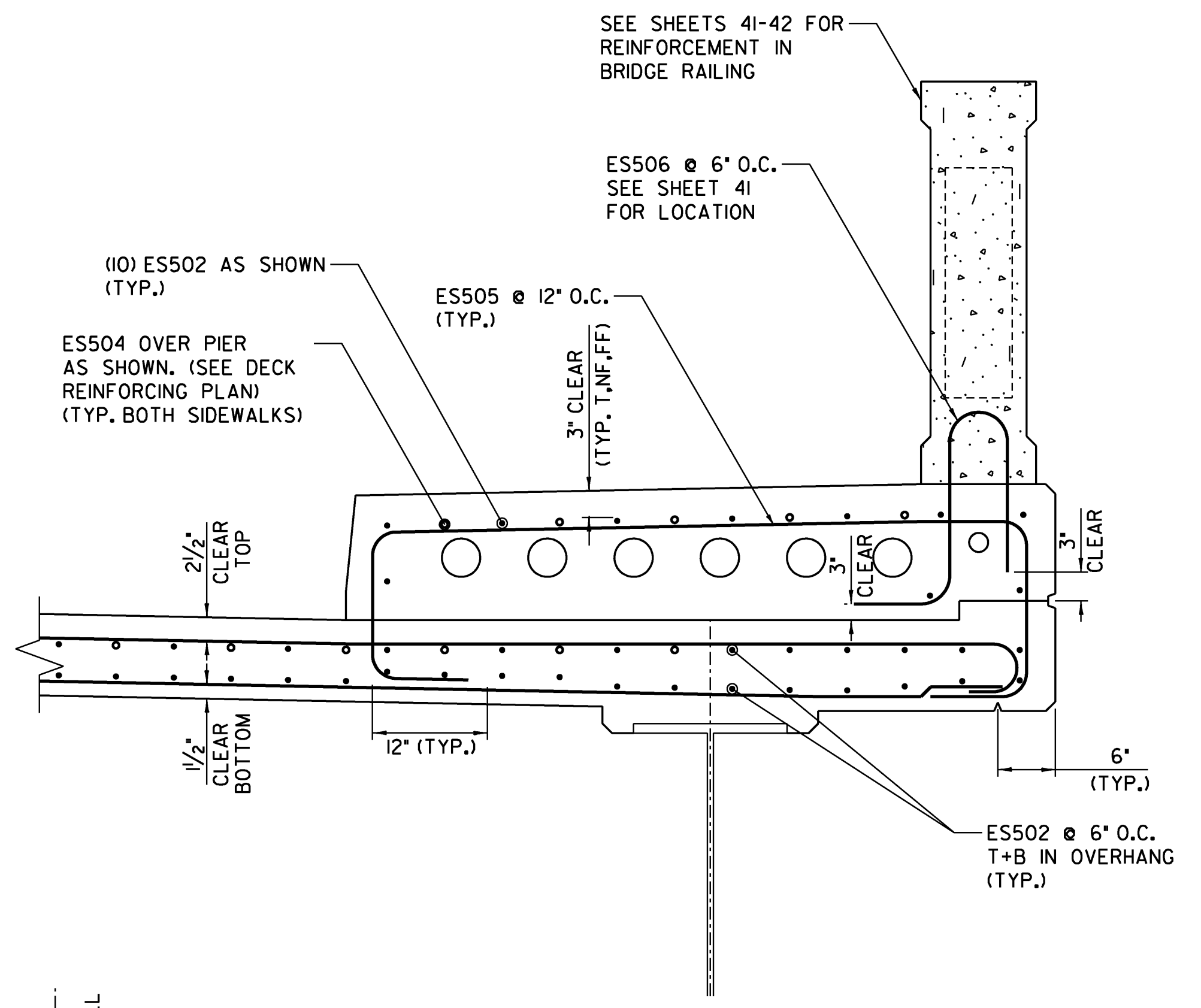


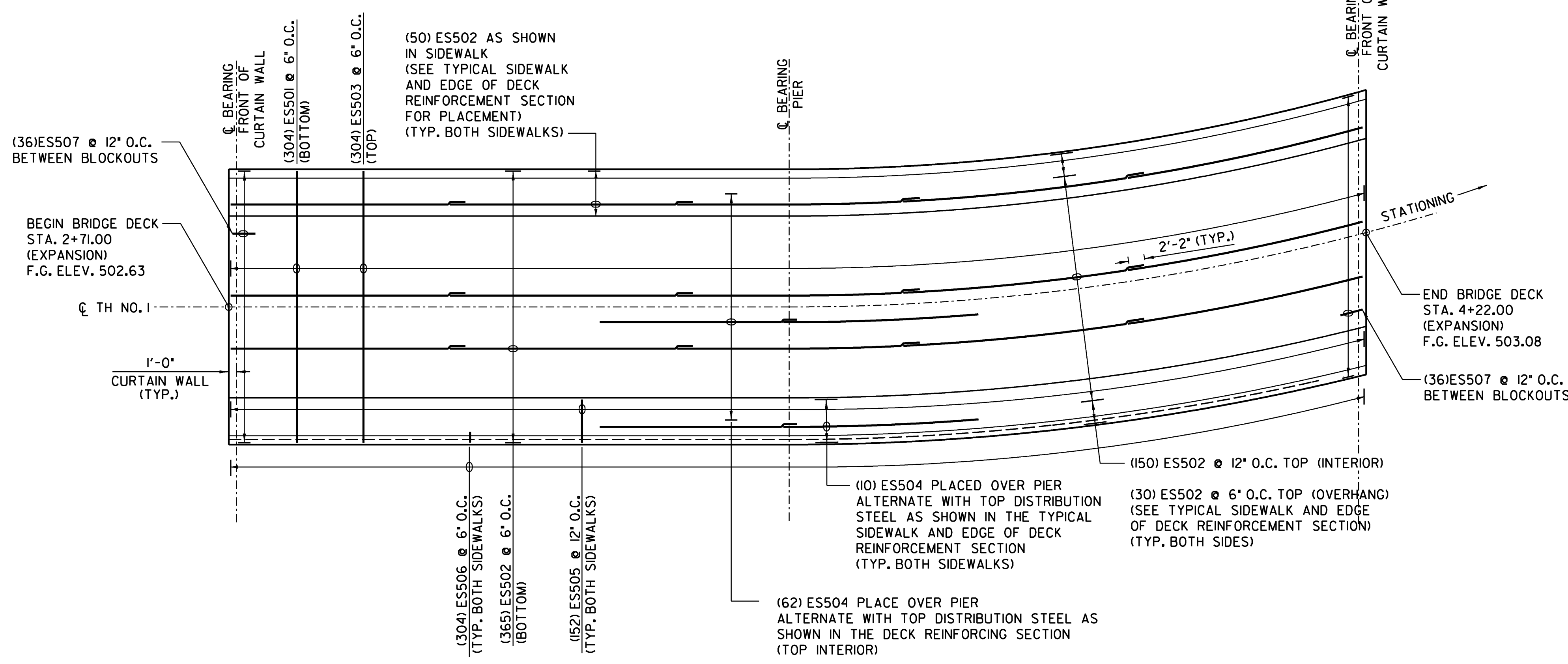
**DECK REINFORCING SECTION**  
SCALE: 1/2" = 1'-0"



**TYPICAL SIDEWALK AND EDGE OF DECK REINFORCEMENT SECTION**  
SCALE: 1" = 1'-0"

APPROXIMATE LOCATION OF NEW WATERLINE, SEE WATERLINE PLANS FOR DETAILS

APPROXIMATE LOCATION OF NEW SEWER LINE, SEE SEWER LINE PLANS FOR DETAILS



**DECK REINFORCING PLAN**  
SCALE: 1" = 10'-0"

- NOTES**
- ALL REINFORCING STEEL IN DECK, SIDEWALKS, AND CURTAIN WALLS SHALL BE EPOXY COATED.
  - EPOXY COATED STEEL IS TO BE SAW CUT WITH EXPOSED ENDS TREATED AS PER SUBSECTION 507.04.
  - NO SPLICES FOR DECK TRANSVERSE REINFORCING STEEL (TOP AND BOTTOM) SHALL BE ALLOWED.
  - NF = NEAR FACE
    - FF = FAR FACE
    - EF = EACH FACE
    - ▲ = CUT TO FIT IN FIELD
    - T+B = TOP AND BOTTOM
    - O.C. = ON CENTER
    - MINIMUM LAP LENGTH NOT DETAIL SHALL BE 2'-2"

<b>STATE OF VERMONT AGENCY OF TRANSPORTATION</b>		
Town Of	JOHNSON	Bridge No. 5
Highway No.	1	Log Sta. Surv. Sta.
<b>TH NO. 1 OVER THE GIBON RIVER</b>		
<b>DECK REINFORCING DETAILS</b>		
Designed By	A.P. GUYETTE	Drawn By A.P. GUYETTE
Checked By	Date	Bridge Design Supervisor
J. W. TUCKER	2/09	J. W. TUCKER Date 2/09
PROJECT	JOHNSON	PROJECT NO. BHO 1448 (29)
I.G.C. Info.	z98J372drd.dgn	D & K DWG NO.
Bridge Sheet No.		Sheet 27 of 68

**DuBois & King**  
INC.

engineering    planning    management    development

PLOTTED 2/10/2009