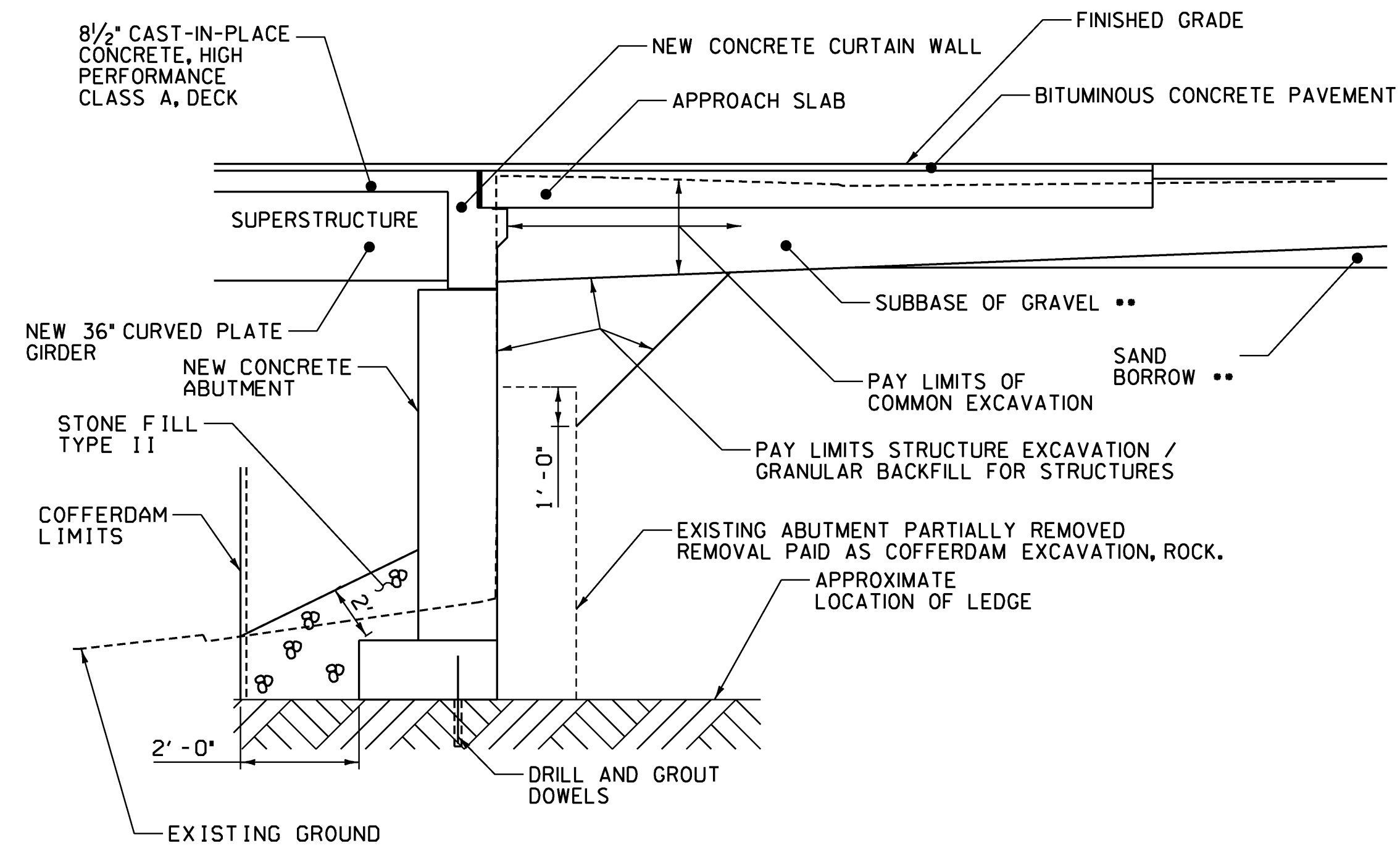


INDEX OF SHEETS

1	TITLE SHEET
2	INDEX OF SHEETS
3	PRELIMINARY INFORMATION
4-6	QUANTITY SHEETS
7	BRIDGE QUANTITY SHEET
7A	ITEM DETAIL AND DRAINAGE SHEET
8-9	BLANK
10	TIE SHEET
11	SITE PLAN
11A	TRAFFIC SIGN SUMMARY SHEET
12	DRAINAGE AND UTILITY PLAN
13	PROFILE
14	DETOUR SHEET
15	TRAFFIC CONTROL
16	BORING INFORMATION SHEET
17	BORING LOG SHEET
18	PLAN AND ELEVATION
19	EPSC NARRATIVE
20	EPSC EXISTING CONDITIONS SITE PLAN
21	EPSC CONSTRUCTION SITE PLAN
22	EPSC FINAL CONDITIONS SITE PLAN
23-24	EPSC DETAIL SHEETS
25	GENERAL NOTES
26	DECK DETAILS
27	DECK REINFORCING DETAILS
28	DECK END DETAILS
29	FRAMING PLAN AND DETAILS
30	GIRDER ELEVATION AND DETAILS
31	CAMBER AND DEFLECTION DETAILS
32	BEARING DETAILS - ABUTMENTS
33	BEARING DETAILS - PIER
34	APPROACH SLAB DETAILS
35	ABUTMENT NO. 1 MODIFICATIONS
36	ABUTMENT NO. 2 MASONRY
37	ABUTMENT NO. 2 REINFORCEMENT
38	ABUTMENT NO. 2 DETAILS
39	FOOTING AND WINGWALL DETAILS
40	PIER DETAILS
41-42	BRIDGE RAIL AND APPROACH RAIL DETAILS
43	BLANK
44-45	ALUMINUM APPROACH RAILING DETAILS
46	STREET LIGHT AND UTILITY DETAILS
47	REINFORCING STEEL SCHEDULE
48	SUBBASE TRANSITION & TYP. CURB SECTION
49-53	ROADWAY CROSS SECTIONS
54-59	CHANNEL CROSS SECTIONS
60-61	DETOUR CROSS SECTIONS
62-63	DRAINAGE PROFILES
64	UTILITY SITE PLAN
65	UTILITY PROFILES
66	UTILITY SECTIONS
67	UTILITY NOTES AND DETAILS
68	UTILITY STRUCTURAL PLAN

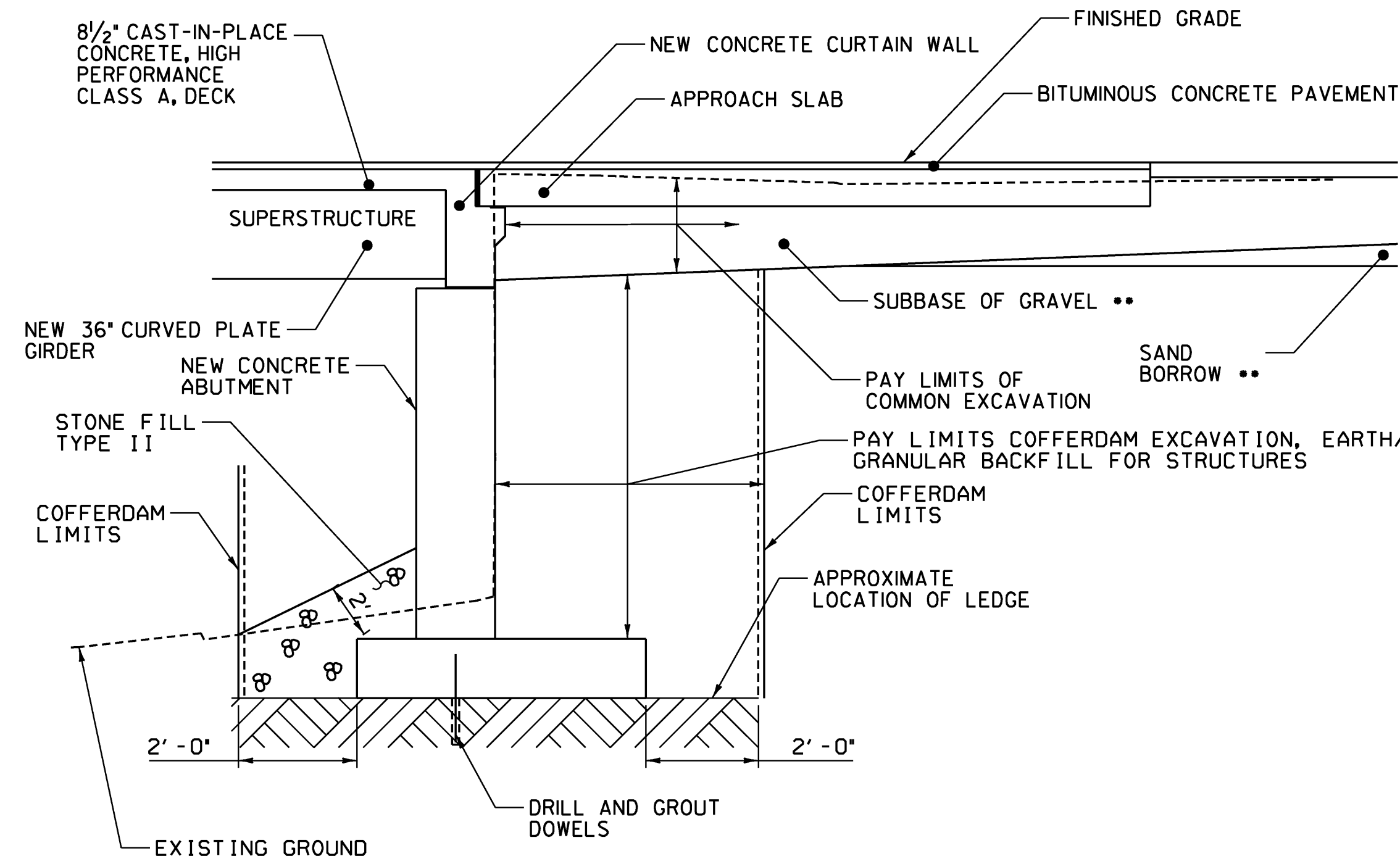


TYPICAL ABUTMENT NO. 2 SECTION AGAINST EXISTING ABUTMENT

(NOT TO SCALE)

** DEPTHS VARY SEE SUBBASE TRANSITION DETAIL, SHEET 48

NOTE: IF STONEFILL IS PLACED ON BEDROCK NO GEOTEXTILE SHALL BE USED. IF STONEFILL IS PLACED ON GRANULAR MATERIAL, GEOTEXTILE SHALL BE USED UNDER STONEFILL.



TYPICAL ABUTMENT NO. 2 SECTION

(NOT TO SCALE)

** DEPTHS VARY SEE SUBBASE TRANSITION DETAIL, SHEET 48

NOTE: IF STONEFILL IS PLACED ON BEDROCK NO GEOTEXTILE SHALL BE USED. IF STONEFILL IS PLACED ON GRANULAR MATERIAL, GEOTEXTILE SHALL BE USED UNDER STONEFILL.

VTRANS STANDARDS

B-5	EMBANKMENT ON EARTH SLOPE, EMBANKMENT ON ROCK SLOPE, MUCK EXCAVATION, TYPICAL SLOPE ROUNDING	06/01/94
B-71	STANDARDS FOR RESIDENTIAL AND COMMERCIAL DRIVES	07/08/05
C-10	CURBING	02/11/08
C-2A	PORTLAND CEMENT CONCRETE SIDEWALK, DRIVE ENTRANCES WITH SIDEWALK ADJACENT TO CURB	10/14/05
C-3A	SIDEWALK RAMPS	03/10/08
C-3B	SIDEWALK RAMPS AND MEDIAN ISLANDS	03/10/08
D-9	REINFORCED CONCRETE DROP INLET WITH VERTICAL CURB, REINFORCED CONCRETE DROP INLET THROAT ADAPTER	06/01/94
D-15	PRECAST REINF. CONC. CATCH BASIN W/ CAST IRON GRATE	06/01/94
	PRECAST REINF. CONC. MANHOLE W/ CAST IRON COVER	
	CAST IRON GRATE WITH FRAME, TYPE D	
	CAST IRON GRATE WITH FRAME, TYPE E	
D-16	PRECAST REINF. CONC. CURB DROP INLET W/ CAST IRON GRATE	06/01/94
	CAST IRON GRATE TYPE B	
	CAST IRON GRATE TYPE C	
	UNDERDRAIN RISER	
	REINFORCED CONCRETE PIPE END SECTION	
	ENERGY DISSIPATOR FOR CULVERT	
E-100	CONSTRUCTION APPROACH SIGNS	01/02/04
E-100A	SIDE ROAD CONSTRUCTION APPROACH SIGNS	01/02/04
E-101	CONSTRUCTION SIGN DETAILS	05/30/03
E-102	CONSTRUCTION SIGN DETAILS	06/30/03
E-102A	CONSTRUCTION SIGN DETAILS	05/01/04
E-106	TRAFFIC CONTROL MISCELLANEOUS DETAILS	03/01/04
E-107	DELINEATION, BARRICADES AND DETOURS FOR CONSTRUCTION AREAS	06/30/03
E-107A	BREAKAWAY BARRICADE DETAILS	08/08/95
E-108	CONSTRUCTION ZONE LONGITUDINAL DROP OFFS	12/08/08
E-121	STANDARD SIGN PLACEMENT CONVENTIONAL ROAD	08/08/95
E-146	REGULATORY SIGN DETAILS	09/20/95
E-152	WARNING SIGN DETAILS	05/01/04
E-173	PULL BOXES AND JUNCTION BOXES	08/09/95
E-175	POWER DROP STANCHIONS	11/17/93
E-180B	STREET LIGHTING DETAILS	08/09/95
E-181	TYPICAL BRIDGE MOUNTING DETAILS FOR STREET LIGHT POLE	08/09/95
E-191	PAVEMENT MARKING DETAILS	02/01/99
E-193	PAVEMENT MARKING DETAILS	08/18/95
G-1	STEEL BEAM GUARDRAIL WITH STEEL POSTS	01/03/00
G-18	STEEL BEAM GUARDRAIL WITH WOOD POSTS	
	PRECAST CONCRETE TEMPORARY TRAFFIC BARRIER	06/01/94
SB-R6-82	BRIDGE RAILING - HEAVY DUTY STEEL BEAM	01/06/95

SEEDING FORMULA

URBAN AREAS

% WT.	LBS./A.	NAME	PUR %	GERM %
42.5	34.0	CREeping RED FESCUE	98	85
10.0	8.0	PERENNIAL RYE GRASS	95	90
42.5	34.0	KENTUCKY BLUE GRASS	85	85
5.0	4.0	ANNUAL RYE GRASS	95	85
100.00	80.0			

GENERAL NOTES

- SEED MIXTURE: SHALL NOT HAVE A WEED CONTENT EXCEEDING 0.40% BY WEIGHT AND SHALL BE FREE OF ALL NOXIOUS SEED.
- SEED: TO BE APPLIED PER SEEDING FORMULAS OR AS DIRECTED BY THE ENGINEER.
- FERTILIZER: FORMULA 10-20-10, TO BE USED WITH SEED, APPLIED AT THE RATE OF 500 LBS./ACRE. (HYDRO SEEDERS MAY USE 19-19-19 FORMULA).
- AGRICULTURAL LIMESTONE: TO BE APPLIED AT THE RATE OF 2 TONS/ACRE, OR AS DIRECTED BY THE ENGINEER.
- HAY MULCH: TO BE PLACED ON EARTH SLOPES AT THE RATE OF 2 TONS/ACRE, OR AS DIRECTED BY THE ENGINEER.
- TOPSOIL: TO BE USED WITH SEED AS INDICATED ON THE PLANS, OR AS DIRECTED BY THE ENGINEER.
- TACK COAT: EMULSIFIED ASPHALT IS TO BE APPLIED AT THE RATE OF 0.015 GAL/SY BETWEEN SUCCESSIVE COURSES OF PAVEMENT AS DIRECTED BY THE ENGINEER.

STATE OF VERMONT AGENCY OF TRANSPORTATION

Town Of	JOHNSON	Bridge No.	5
Highway No.	1	Log Sta.	
		Surv. Sta.	

TH NO. 1 OVER THE GIHON RIVER

INDEX OF SHEETS

Designed By	A.P. GUYETTE	Drawn By	A.P. GUYETTE
Checked By	Date	Bridge Design Supervisor	Date
J. W. TUCKER	2/09	J. W. TUCKER	2/09
PROJECT	JOHNSON	PROJECT NO.	BHO 1448 (29)
I.G.C. Info.	z98j372+it.dgn	D & K DWG NO.	
Bridge Sheet No.		Sheet	2 of 68

DuBois & King
INC.
engineering planning management development

PLOTTED 2/18/2009