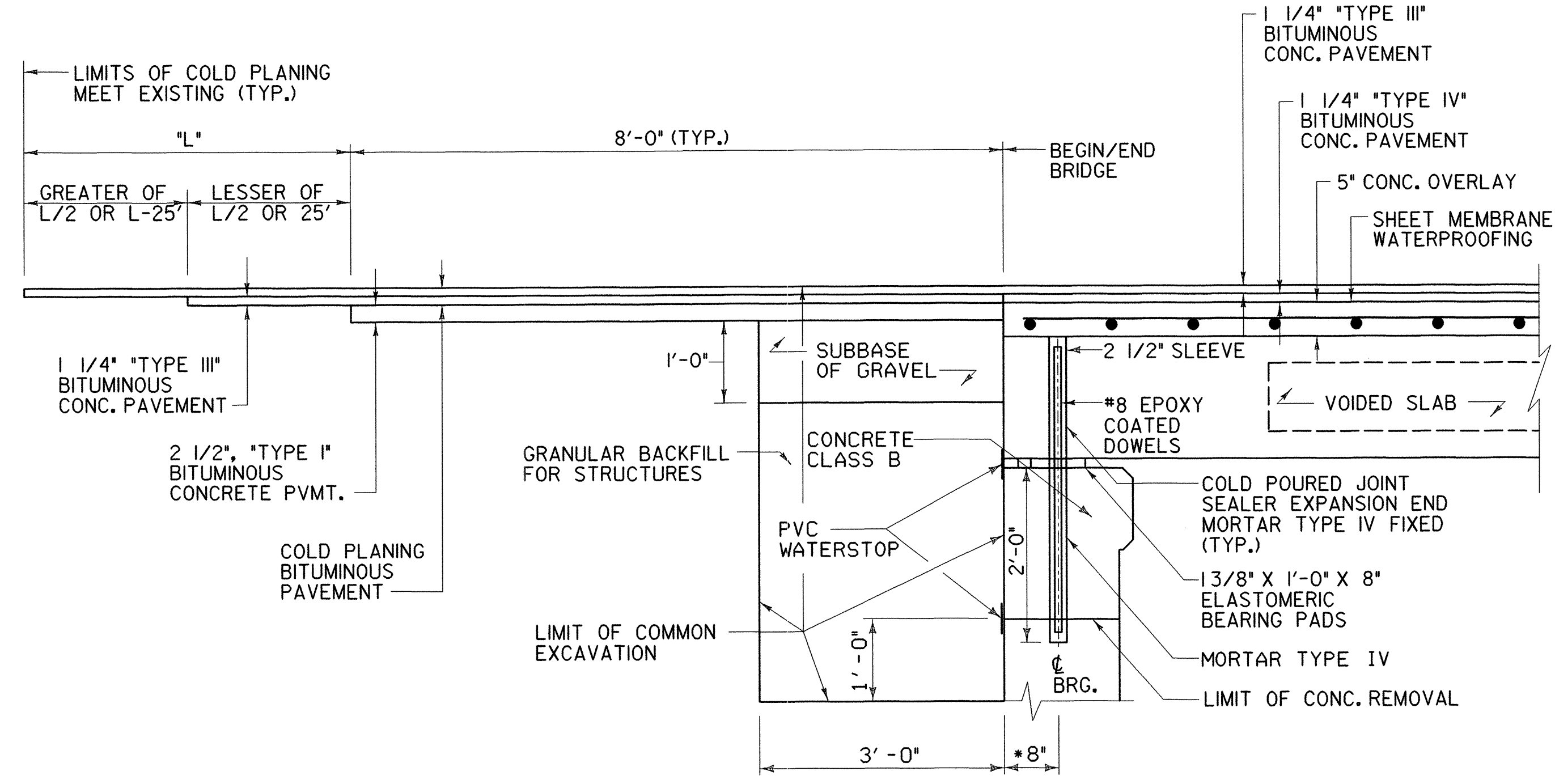


BEARING NOTES

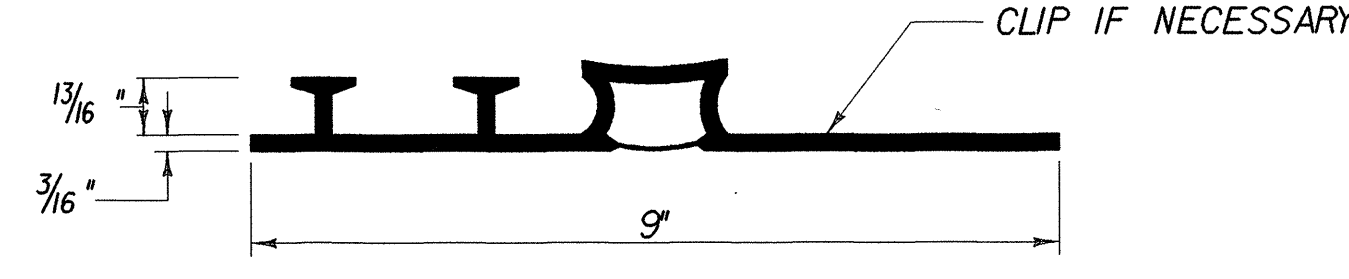
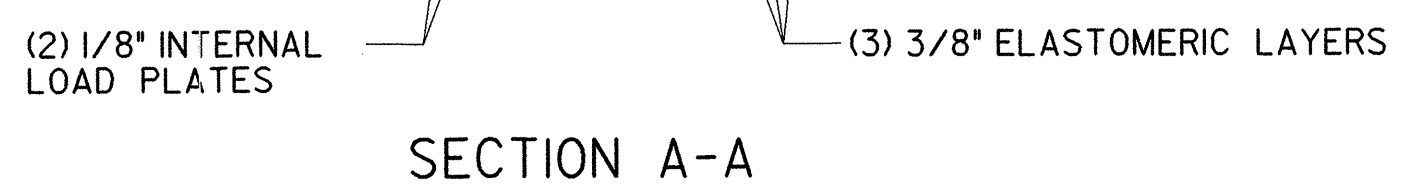
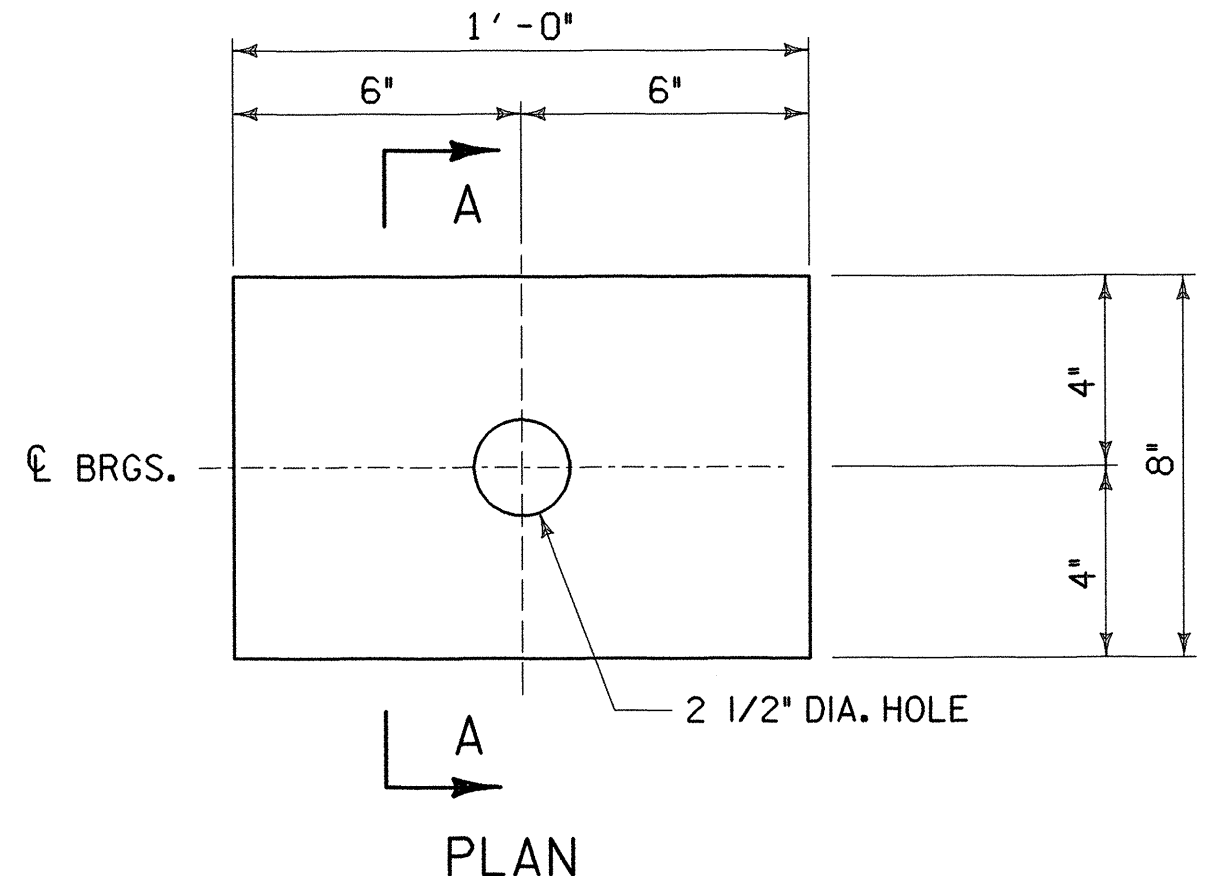
1. THE BEARING SHAPE FACTOR SHALL BE BETWEEN 5.0 AND 12.0
2. ANY NECESSARY REINFORCEMENT BETWEEN LAYERS OF ELASTOMERIC SHALL BE STEEL GRADE A36. FABRIC REINFORCEMENT WILL NOT BE PERMITTED.
3. WHEN USING STEEL REINFORCEMENT, THESE PLANS REFER TO THE TOP AND BOTTOM LAYERS OF ELASTOMERIC AS BEDDING LAYERS. THE MINIMUM THICKNESS OF THESE LAYERS SHALL BE 1/8". THE BEDDING LAYERS ARE INCLUDED IN THE "EFFECTIVE RUBBER THICKNESS" (ERT).
4. BEARING DESIGN INFORMATION:
LOADS: RDL+SDL=10.7K ; RLL=15.0K
DESIGN METHOD: DESIGN METHOD A FOR BEARING DESIGN
TEMPERATURE: 80 DEG. F
MATERIAL: 60 DUROMETER NEOPRENE
MAXIMUM BEARING STRESS: 800 PSI
DESIGN ROTATION: 0.0010 RAD.
5. ALL MATERIALS AND FABRICATION SHALL BE PER AASHTO DIVISION II SECTION 18.2 AND AASHTO MATERIALS SPECIFICATION M251.
6. THE CONTRACTOR MAY SUBMIT ALTERNATIVE BEARING DESIGNS FOR APPROVAL ANY ALTERNATIVE SUBMITTED SHALL BE DESIGNED AND CERTIFIED TO MEET THE LOADS AND CRITERIA SHOWN ON THIS SHEET AND SHALL MAINTAIN THE ANCHORAGE SYSTEM SHOWN. THE BEARINGS SHALL BE DESIGNED ACCORDING TO AASHTO "STANDARD SPECIFICATIONS FOR HIGHWAY BRIDGES" 1996 ED. AND ITS LATEST INTERIMS, SECTION 14 BY EITHER METHOD A OR B.
7. THE BEARINGS SHALL BE PAID FOR UNDER THE ITEM 531.0 "BEARING DEVICE ASSEMBLY". THERE WILL BE A TOTAL OF 24 BEARING DEVICE ASSEMBLIES PAID ON THIS PROJECT. A BEARING DEVICE ASSEMBLY CONSISTS OF ONE BEARING PAD AS SHOWN ON THIS SHEET. EACH END OF THE 6 PRESTRESSED MEMBERS ARE SUPPORTED BY 2 BEARING ASSEMBLIES.



NOTE:
•CONTRACTOR TO FIELD VERIFY DIMENSIONS PRIOR TO BEAM FABRICATION.

VOIDED SLAB PAVEMENT / NO APPROACH SLAB

SCALE: 3/4" = 1'-0"



P.V.C. WATERSTOP FOR EXPANSION JOINTS

THE COSTS FOR P.V.C. WATERSTOP SHALL BE INCLUDED IN THE UNIT PRICE BID FOR CONCRETE. OTHER CONFIGURATIONS MAY BE USED UPON APPROVAL OF THE ENGINEER.

BEARING DETAILS

NTS

RE-ADVERTISED

PROJECT NO.

BHO 1445 (28)

Greenman-Pedersen CONSULTING ENGINEERS GPI 55 Monument Ave. Bennington, VT. 05201	LINCOLN BRIDGE 13 OVER COTA BROOK			
	BRIDGE END AND BEARING DETAILS			
DRAWING NO. BD-1	SCALE: AS SHOWN	DATE: DEC., 1999	SHEET NO. 12 OF 13	

#FILES
 CHECKED BY: [Signature]
 DRAFTED BY: [Signature]
 DESIGNED BY: [Signature]
 IN CHARGE OF: [Signature]